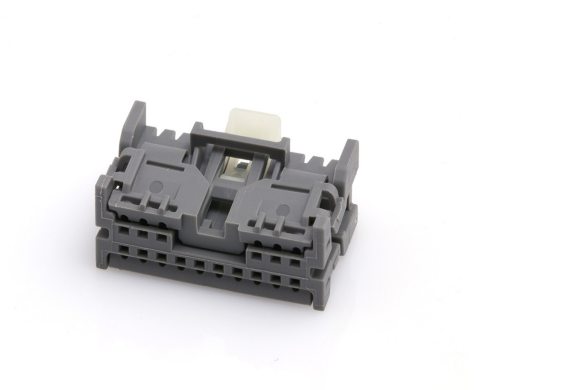




**Part Number :** [348242166](#)  
**Product Description :** PROPOSED  
REPLACEMENT: MINI50 GEN II UNSEALED  
RECEPTACLES (206523 SERIES); Mini50  
Unsealed Receptacle, Dual Row, Bridged, with  
CPA, 20 Circuits, EcoPaXX Resin, Polarization  
Option B, Gray  
**Series Number :** 34824  
**Status :** Active  
**Product Category :** Connector Housings



Documents & Resources

**Drawings**  
[348242205\\_sd.pdf](#)  
[PK-31301-538-001.pdf](#)  
[PK-31301-538-001.pdf](#)

**3D Models and Design Files**  
[348242205\\_stp.zip](#)

**Specifications**  
[AS-34791-020-CH-001.pdf](#)  
[347910020-TS-000.pdf](#)

Product Environment Compliance

Compliance

GADSL/IMDS	Duty-To-Declare
China RoHS	
EU ELV	Compliant per 2000/53/EC
Low-Halogen Status	Low-Halogen per IEC 61249-2-21
REACH SVHC	Not Contained per D(2024)4144-DC (27 June 2024)
EU RoHS	Compliant per EU 2015/863

Multiple Part Product Compliance Statements

- Eu RoHS
- REACH SVHC
- Low-Halogen

## Multiple Part Industry Compliance Documents

- IPC 1752A Class C
- IPC 1752A Class D
- Molex Product Compliance Declaration
- IEC-62474
- chemSHERPA (xml)

## EU RoHS Certificate of Compliance

---

### Part Details

#### General

Status	Active
Category	Connector Housings
Series	34824
Description	PROPOSED REPLACEMENT: MINI50 GEN II UNSEALED RECEPTACLES (206523 SERIES); Mini50 Unsealed Receptacle, Dual Row, Bridged, with CPA, 20 Circuits, EcoPaXX Resin, Polarization Option B, Gray
Application	Automotive, Power, Wire-to-Board
Product Name	Mini50
UPC	191128229302

#### Physical

Circuits (maximum)	20
Color - Resin	Gray
Gender	Receptacle
Glow-Wire Capable	No
Keying to Mating Part	Yes
Lock to Mating Part	Yes
Material - Resin	Nylon
Net Weight	2.200/g
Number of Rows	2
Packaging Type	Bag
Panel Mount	No
Pitch - Mating Interface	2.00mm
Pitch - Termination Interface	2.00mm

Polarization	B
Polarized to Mating Part	Yes
Stackable	No
Temperature Range - Operating	-40° to +105°C

---

## Mates With / Use With

### Mates with Part(s)

Description	Part Number
Mini50 Unsealed Dual Row Vertical Headers	<u>34825</u>
Mini50 Unsealed Dual Row Right-Angle Headers	<u>34826</u>
Mini50 Unsealed Dual Row Right-Angle Headers	<u>34897</u>

### Use with Part(s)

Description	Part Number
CTX50 Unsealed Receptacle Terminals	<u>560023</u>