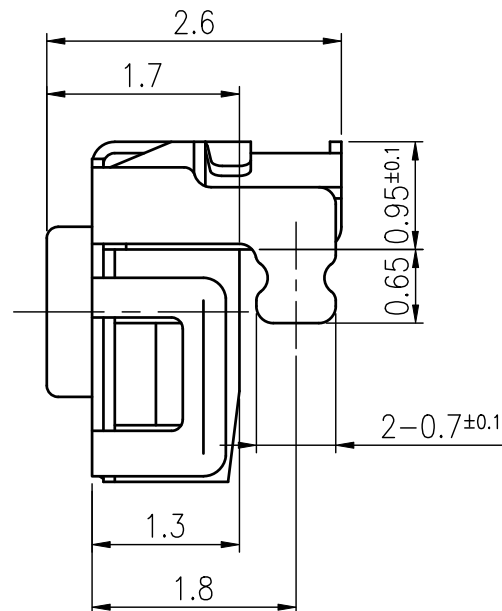
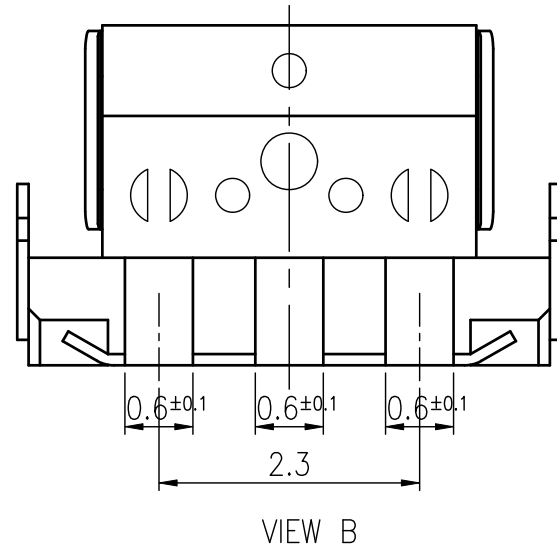
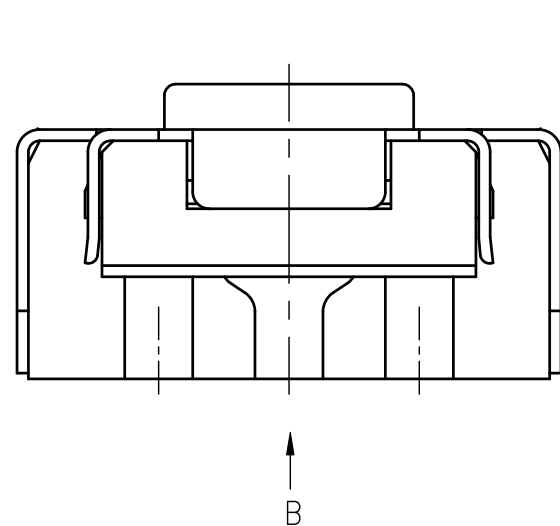
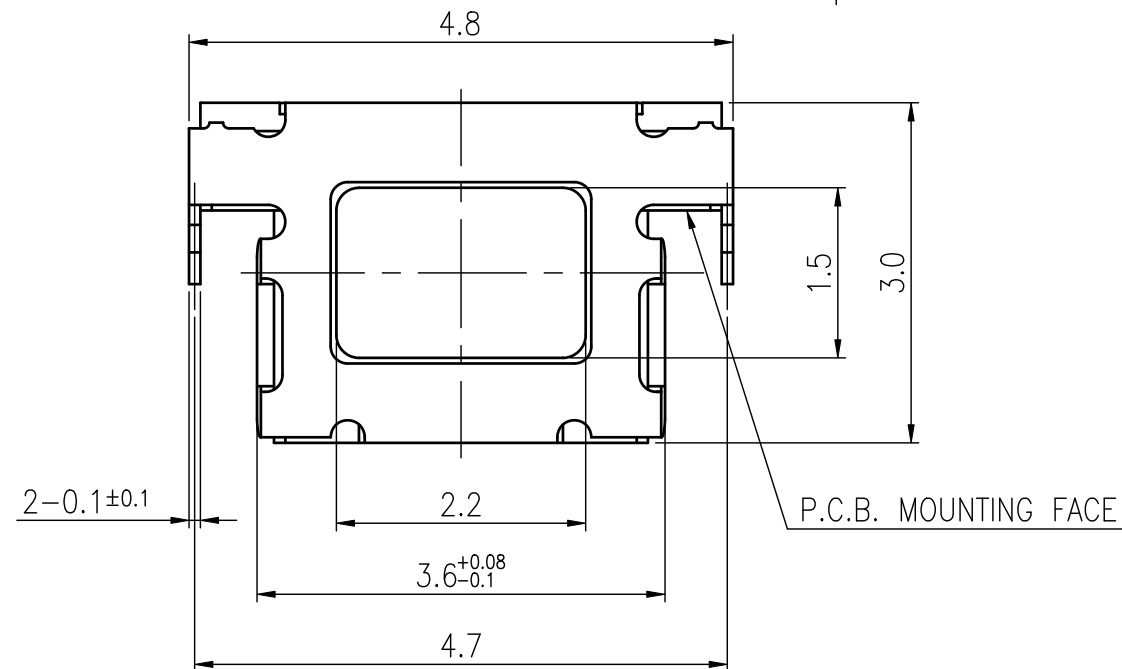
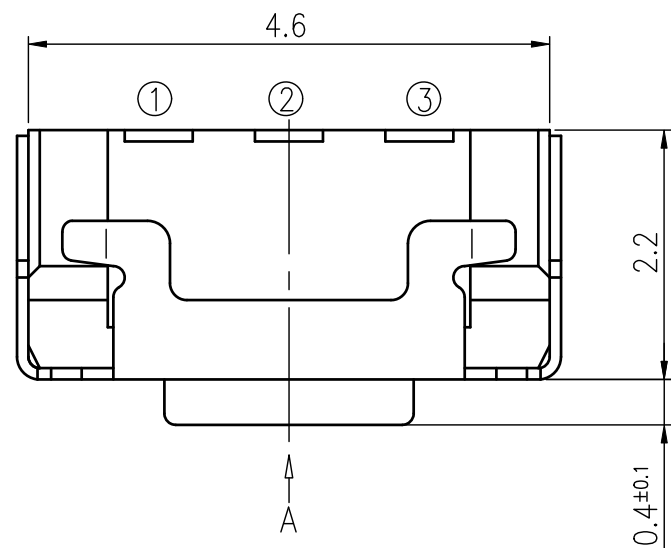


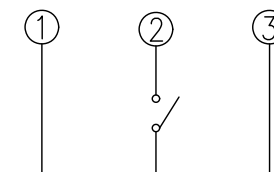
RoHS Compliant



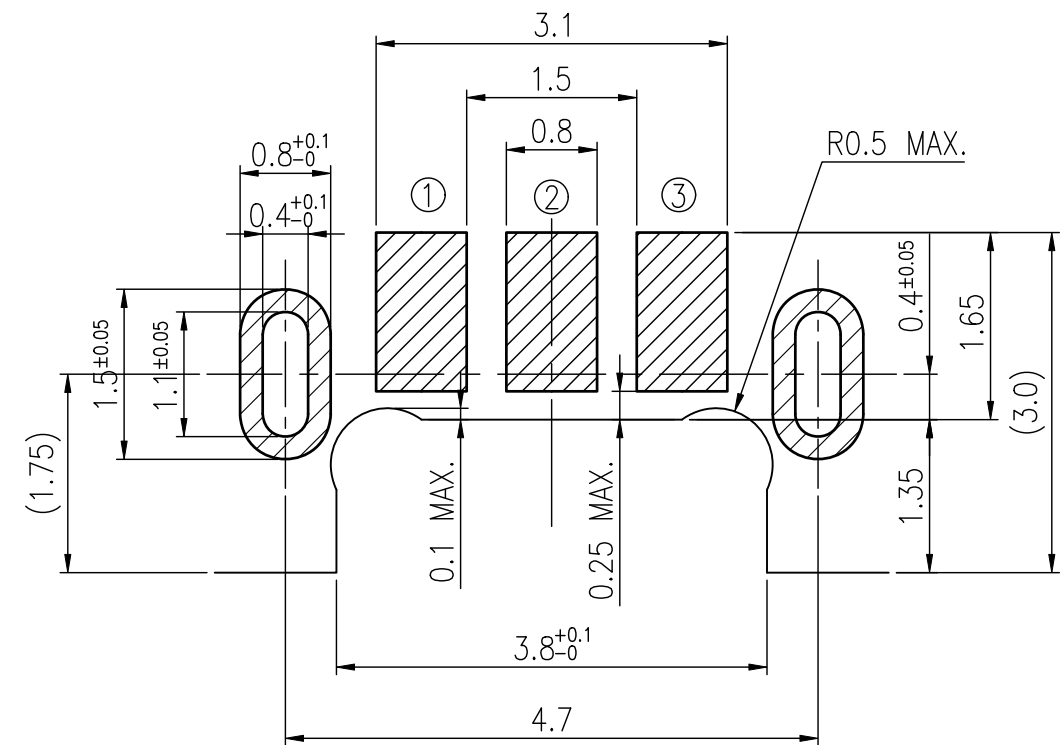
REVISIONS							
Rev	DESCRIPTION	DATE	DRAWER	REV	DESCRIPTION	DATE	DRAWER
A	Initial Drawing	2020.07.23	Jane Shen	C			
B				D			
SPECIFICATIONS							
RATING		DC15V 20mA MAX.		TIMING			
CONTACT RESISTANCE		100mΩ MAX.		OPERATION (TORQUE)			
INSULATION RESISTANCE		DC100V - 100MΩ MIN.		STROKE (ANGLE)		0.15±0.1 mm	
WITHSTAND VOLTAGE		AC250V - 1 MINUTE		LIFE		200,000 CYCLES	
REMARKS:							

MODEL NO.	OPERATION
NTC313-EK1G-A160T	160±50 gf
NTC313-EK1G-A350T	350±80 gf

SCHEMATIC



P.C.B LAYOUT
(VIEW FROM THE DIRECTION A)

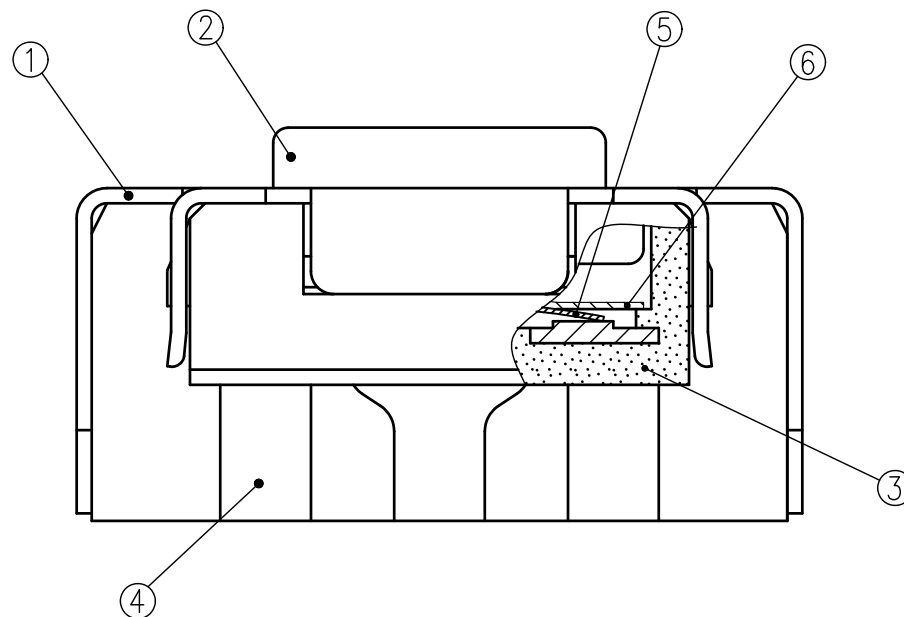


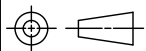
(TOLERANCES UNLESS OTHERWISE SPECIFIED ±0.1)

TOLERANCES UNLESS OTHERWISE SPECIFIED ±0.2			SIGNATURES		DATE	MODEL
	UNIT mm	SCALE 15/1	DRAWN	Jane Shen	2021.08.04	TACT SWITCH
			CHECKED	Landry Su	2021.08.04	
			REVIEWED			NO. SEE MODEL NO.
			APPROVALS	Qiuyuan Chuang	2021.08.04	

TAIWAN MISAKI ELECTRONICS CO., LTD.

RoHS Compliant



6	TAPE	1	POLYIMIDE			
5	CONTACT PLATE	2	STAINLESS STEEL PLATE	Ag PLATING		
4	TERMINAL	3	COPPER ALLOY	Ag PLATING OVER Ni PLATING		
3	FRAME	1	LIQUID CRYSTAL POLYMER	BLACK COLOR		
2	STEM	1	LIQUID CRYSTAL POLYMER	BLUE COLOR		
1	COVER	1	STAINLESS STEEL PLATE	Ag PLATING OVER Ni PLATING		
NO.	PART NAME	Q'TY	MATERIAL	SPECIFICATION		
				SIGNATURES	DATE	M O D E L
				DRAWN Jane Shen	2021.08.04	TITLE TACT SWITCH
				CHK'D Landry Su	2021.08.04	
				REV'D		NO. NTC313- E K1G-A350T
				APP'D Qiuyuan Chuang	2021.08.04	
SYM	DESCRIPTION	DATE	APPROVED	DWG NO. NTC313-K04		
TAIWAN MISAKI ELECTRONICS CO.,LTD.						

SPECIFICATIONS FOR TACT SWITCH

RoHS Compliant

Model: NTC313-(DK,EK)1G- Series

1. Test condition:

Standard test conditions shall be 5~35℃ in temperature, 45~85%RH in humidity and 86~106Kpa in atmospheric pressure.
Should any doubt arise in judgment, tests shall be conducted at 20±2℃ in temperature, 60~70% RH in Humidity and 86~106 kpa in atmospheric pressure.

2. Operating temperature range: -40 ~ +85℃

Preservative temperature range: -40 ~ +85℃

3. Construction:

3.1 Shape and dimension are subject to attached drawing regulation.

3.2 Appearance: Whole should be a good completion, no rust, no crack and good plating.

4. Rating: 15V D.C. , 20mA.

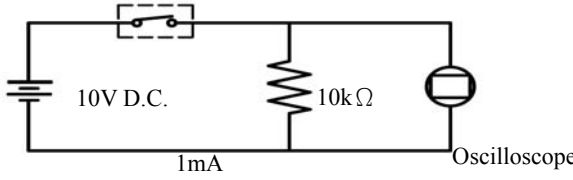
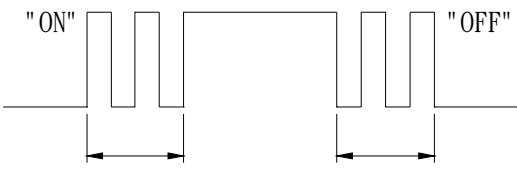
5. Electrical Performance:

No.	Items	Test conditions	Specifications
5.1	Contact Resistance	Shall be measure at 1kHz±200Hz (MAX. 20mV, MAX. 40mA.) or 1 A, 5V D.C. By voltage drop method.	100mΩ Max.
5.2	Insulation Resistance	Shall be measured by applying 100V D.C. Between all terminals and between the terminals and the frame for 1 minute ± 5 seconds.	100 MΩ Min.
5.3	Withstand Voltage	250V A.C. (50~60Hz 2mA) shall be applied between all terminals and between the terminals and the frame for 1 minute.	No dielectric breakdown shall be occurred.

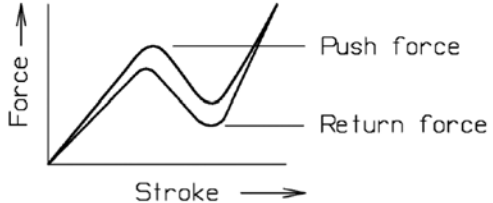
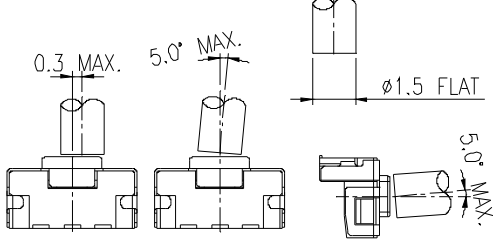
			APPROVED BY	REVIEWED BY	CHECKED BY	DESIGNED BY	SPEC NO.
						Jane Shen	SE-TC77N
							PAGINATE
A	NEW RELEASE						
SYM	DISCRIPTION	DATE					1/5

SPECIFICATIONS FOR TACT SWITCH

RoHS Compliant

No.	Items	Test conditions	Specifications
5.4	Bounce	<p>Lightly striking the center of the stem at a rate Encountered in normal use (3 to 4 operations per sec.)</p> <p>Switch</p>  <p>10V D.C. 10kΩ 1mA Oscilloscope</p> 	<p>ON: 10m sec Max. OFF: 10m sec Max.</p>

6. Mechanical Performance:

No.	Items	Test conditions	Specifications
6.1	Operating Force	<p>Placing the switch such that the direction of switch operation is vertical and then gradually increasing the load applied to the center of the stem the maximum load required for the switch to come to a stop shall be measured.</p>  	<p>Push force:</p> <p>160±50gf 350±80gf</p>

APPROVED BY REVIEWED BY CHECKED BY DESIGNED BY SPEC NO.

Jane Shen

SE-TC77N

PAGINATE

A NEW RELEASE

SYM DISCRIPTION

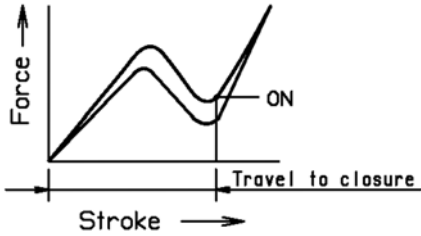
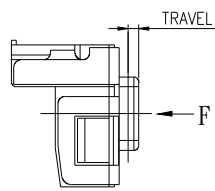
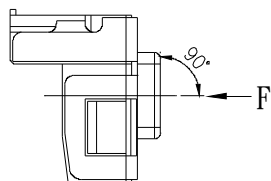
DATE

2/5

TAIWAN MISAKI ELECTRONICS CO., LTD.

SPECIFICATIONS FOR TACT SWITCH

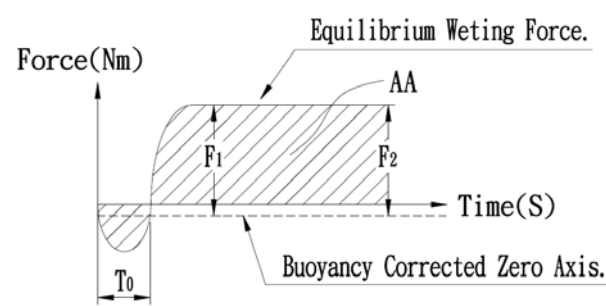
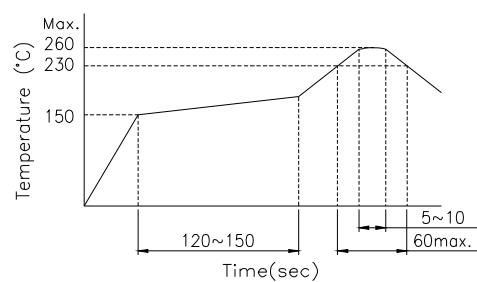
RoHS Compliant

No.	Items	Test conditions	Specifications
6.2	Travel	<p>Placing the switch such that the direction of switch operation is vertical and then applying a below static load to the center of the stem, the travel distance for the switch to come to a stop shall be measured.</p>  	0.15± 0.1mm.
6.3	Push Strength	<p>Placing the switch such that the direction of switch operation is vertical and then a below station load shall be applied in the direction of stem operation.</p> <p>3kgf for 15 seconds.</p> 	No damage. (Electrical and mechanical)

			APPROVED BY	REVIEWED BY	CHECKED BY	DESIGNED BY	SPEC NO.
						Jane Shen	SE-TC77N
							PAGINATE
A	NEW RELEASE						3/5
SYM	DISCRIPTION	DATE					

SPECIFICATIONS FOR TACT SWITCH

RoHS Compliant

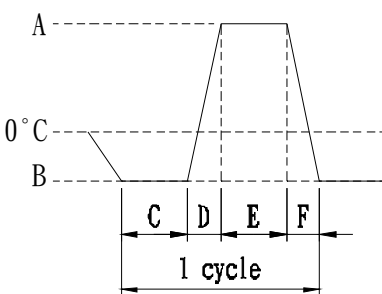
No.	Items	Test conditions	Specifications										
6.4	Solderability	<p>Test Temperature : 235 ± 5℃ Immersion Angle : 90° Immersion Speed : 1 mm/sec. Immersion Depth : 0.1mm Dwell Time : 5 seconds</p>  <table><tr><th>Para.</th><th>Criteria</th></tr><tr><td>Tb</td><td>≤ 1 second</td></tr><tr><td>F1</td><td>50% of maximum theoretical wetting force at or before two seconds</td></tr><tr><td>F2</td><td>No less than 90% of the F1 Value</td></tr><tr><td>AA</td><td>Area calculated using sample buoyancy and 50% maximum theoretical force</td></tr></table>	Para.	Criteria	Tb	≤ 1 second	F1	50% of maximum theoretical wetting force at or before two seconds	F2	No less than 90% of the F1 Value	AA	Area calculated using sample buoyancy and 50% maximum theoretical force	Conform to the criteria in the left table.
Para.	Criteria												
Tb	≤ 1 second												
F1	50% of maximum theoretical wetting force at or before two seconds												
F2	No less than 90% of the F1 Value												
AA	Area calculated using sample buoyancy and 50% maximum theoretical force												
6.5	Solder Heat Resistance	<p>(1) Manual soldering temperature: Temperature: 350℃ Max. Time: 3 Sec. Max. (2) Reflow Soldering: Number of reflow pass: 2 cycles.</p> 	Shall be free form pronounced deforming in appearance. Item 5.1~5.4 shall be satisfied. Item 6.1~6.2 shall be satisfied.										

			APPROVED BY	REVIEWED BY	CHECKED BY	DESIGNED BY	SPEC NO.
						Jane Shen	SE-TC77N
							PAGINATE
A	NEW RELEASE						4/5
SYM	DISCRIPTION	DATE					

SPECIFICATIONS FOR TACT SWITCH

RoHS Compliant

7. Weather Performance:

No.	Items	Test conditions	Specifications
7.1	Humidity Test	(1) Temperature: $60\pm 2^{\circ}\text{C}$. (2) Relative humidity: 90~95% (3) Duration of test: 500 Hour. (4) Take off drop water. (5) Standard conditions after test: 1 Hour.	Contact resistance: 1Ω Max Item 5.2~5.4 shall be satisfied. Item 6.1~6.2 shall be satisfied.
7.2	Heat Test	(1) Temperature: $85\pm 2^{\circ}\text{C}$. (2) Duration of test: 500 Hour. (3) Standard conditions after test: 1 Hour.	
7.3	Cold Test	(1) Temperature: $-40\pm 2^{\circ}\text{C}$. (2) Duration of test: 500 Hour. (3) Take off drop water. (4) Standard conditions after test: 1 Hour.	Contact resistance: 1Ω Max Item 5.2~5.4 shall be satisfied. Item 6.1~6.2 shall be satisfied.
7.4	Temperature cycle	(1) Test cycle: 20 cycles. (2) Standard conditions after test: 1 Hour.  <p>A: $+85\pm 2^{\circ}\text{C}$ B: $-40\pm 2^{\circ}\text{C}$ C: 2 hour D: 1 hour E: 2 hour F: 1 hour</p>	

8. Durability:

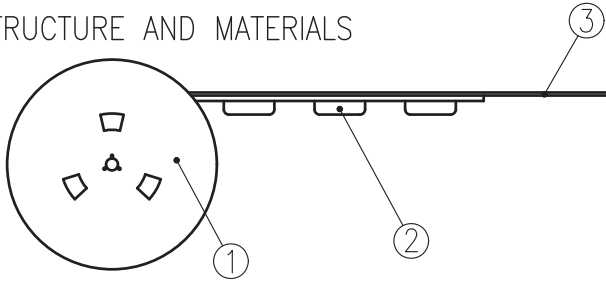
No.	Items	Test conditions	Specifications
8.1	Life Test	(1) 5V D.C. , 5mA Resistance load. (2) Operating speed: 120 cycles/minute. (2) Push force: Maximum value of operation force. (3) Operation number: 200,000 times.	Contact Resistance: 2Ω MAX. Bounce: 20m sec Max.(ON,OFF) Operating Force: Within $\pm 30\%$ of specifications. Item 5.2 shall be satisfied. Item 6.2 shall be satisfied.

			APPROVED BY	REVIEWED BY	CHECKED BY	DESIGNED BY	SPEC NO.
						Jane Shen	SE-TC77N
							PAGINATE
A	NEW RELEASE						
SYM	DISCRIPTION	DATE					5/5

THE PACKING SPECIFICATIONS

RoHS Compliant

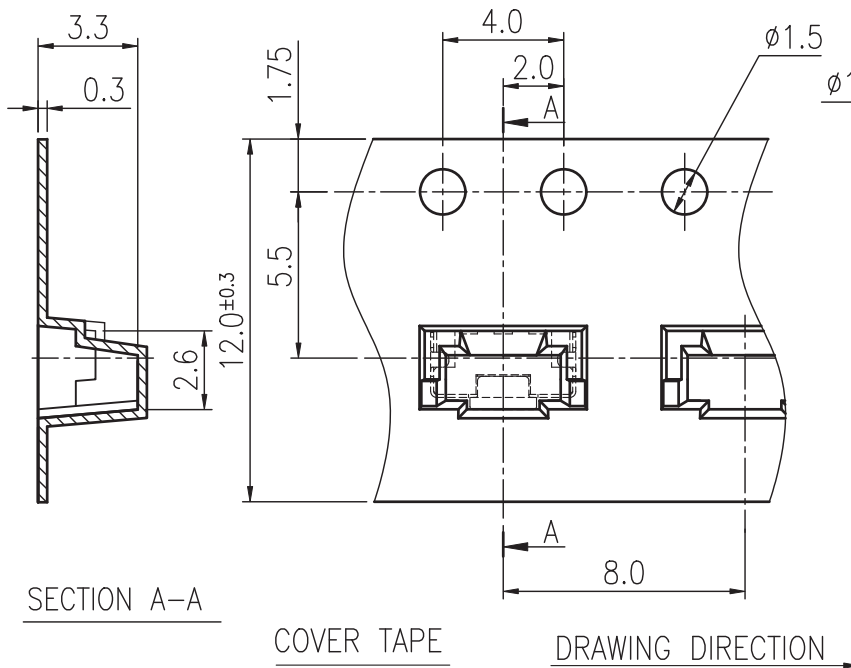
1.STRUCTURE AND MATERIALS



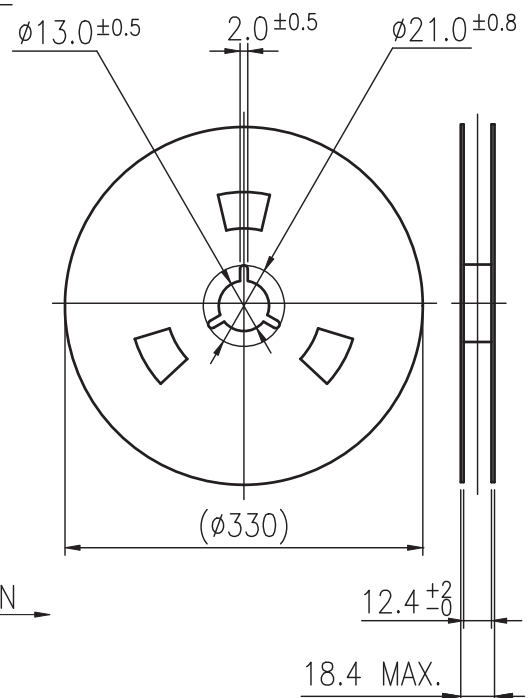
③	COVER TAPE	POLYESTER
②	CARRIER TAPE	POLYSTYRENE
①	REEL	POLYSTYRENE
NO.	PARTS NAME	MATERIALS

- PACKAGING QUANTITY : 2,500 PCS/REEL
- MORE THAN 10 EMPTY POCKETS SHOULD BE REMAINED AT BOTH ENDS OF THE CARRIER TAPE FOR EACH REEL.
- SHORTAGE LESS THAN 10 PCS A REEL IS ACCETABLE BUT MORE THAN 3 RUNNING POCKETS SHORTAGE IS NOT ALLOWED.
- STRIPPING STRENGTH OF COVER TAPE IS BETWEEN 10 gf TO **130**) gf AND STRIPPING ANGLE SHOULD BE WITHIN 165° ~ 180 °.
- THE PRODUCT IN THE POCKET OF CARRIER TAPE SHOULD BE PLACED IN A SPECIFIED CORRECT POSITION.
- TAPE AND REEL PER EIA-481.
- DIMENSIONS :

CARRIER TAPE



REEL



				APPROVED BY	REVIEWED BY	CHECKED BY	DESIGNED BY	MODEL NO.
							Jane Shen	NTC313-EK1G-A
				Quiyuan Chuang				PAGINATE.
								1/1
								SPEC NO.
								P-626-1
SYM	DESCRIPTION	DATE	APPROVED					

TAIWAN MISAKI ELECTRONICS CO.,LTD.