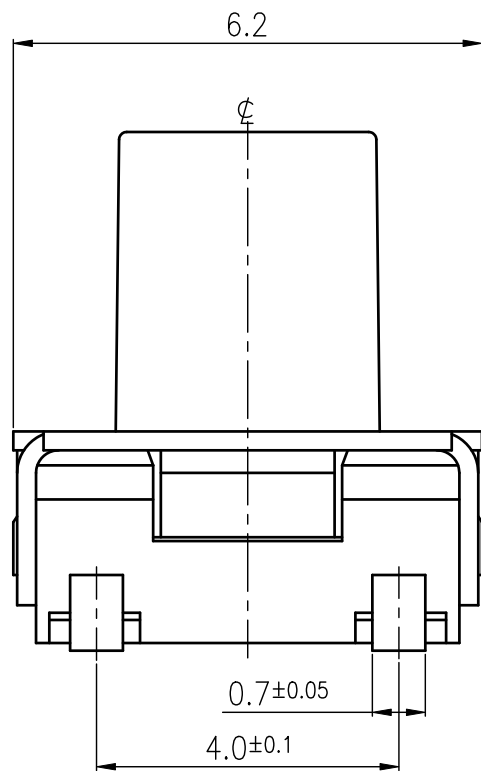
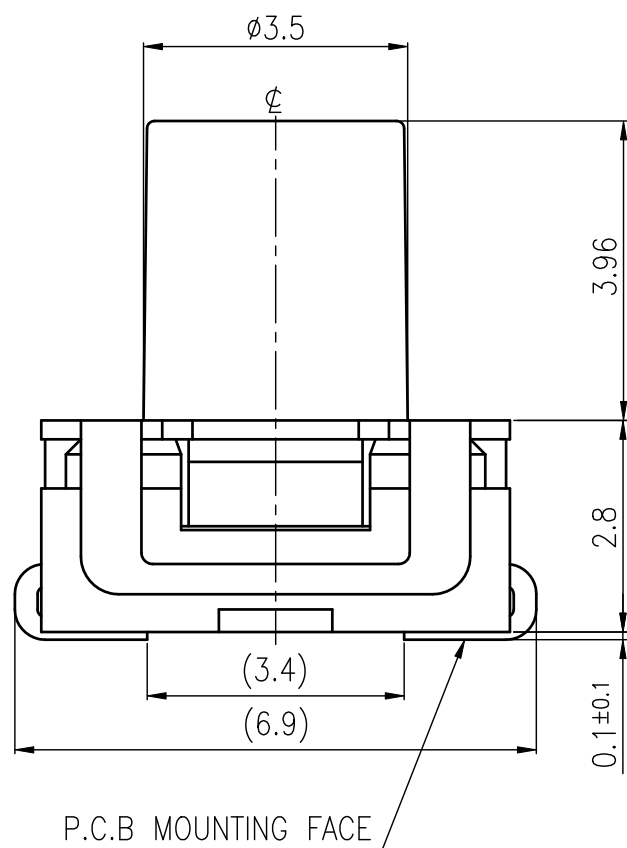
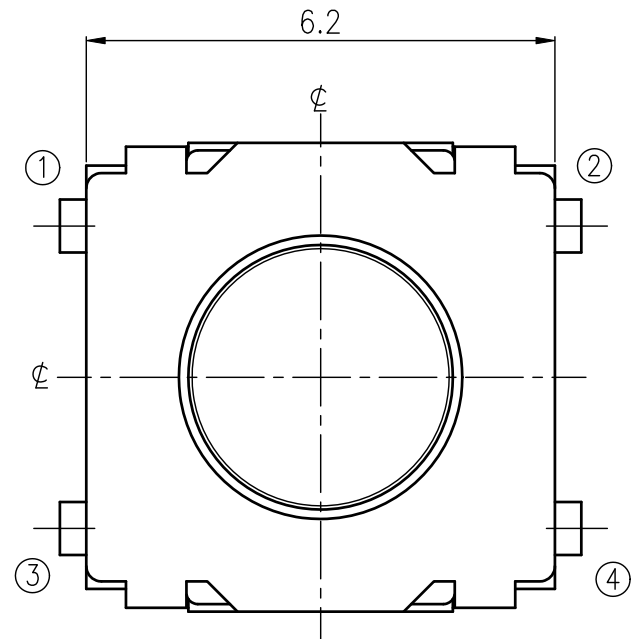
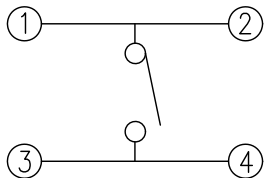


RoHS Compliant

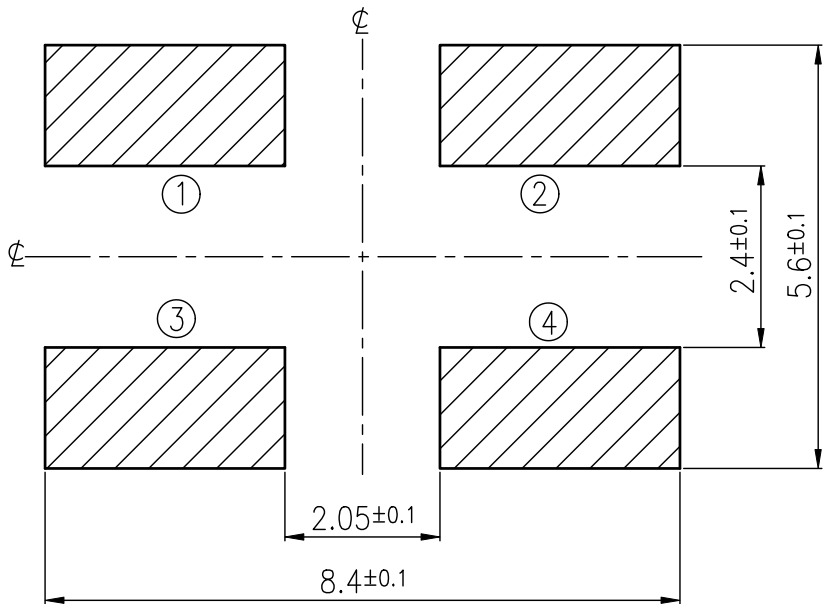


| REVISIONS | | | | | | | |
|-----------------------|-----------------|-------------------------|-----------|--------------------|-------------|----------------|--------|
| Rev | DESCRIPTION | DATE | DRAWER | Rev | DESCRIPTION | DATE | DRAWER |
| A | Initial Drawing | 2017.10.31 | Jane Shen | C | | | |
| B | | | | D | | | |
| SPECIFICATIONS | | | | | | | |
| RATING | | 1VA DC32V MAX. | | TIMING | | | |
| CONTACT RESISTANCE | | 50mΩ MAX. | | OPERATION (TORQUE) | | 240±50 gf | |
| INSULATION RESISTANCE | | DC100V–1000MΩ MIN. | | STROKE (ANGLE) | | 0.4±0.2 mm | |
| WITHSTAND VOLTAGE | | AC250V–1 MINUTE. | | LIFE | | 100,000 CYCLES | |
| REMARKS: | | Waterproof Grade : IP57 | | | | | |

SCHEMATIC



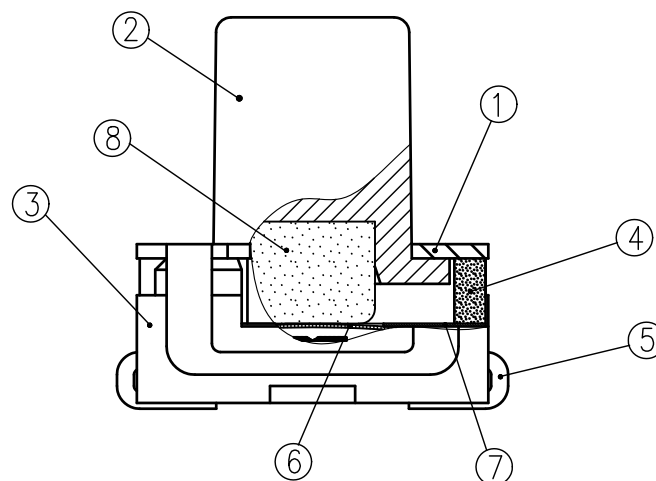
RECOMMENDED P.C.B LAYOUT



HATCHED AREA SHOWS SOLDERING LAND

| TOLERANCES UNLESS OTHERWISE SPECIFIED ±0.2 | | | SIGNATURES | | DATE | MODEL |
|---|------------|---------------|------------|-----------|---------------------------|--------------------------|
| | | | DRAWER | Jane Shen | 2021.01.07 | TITLE TACT SWITCH |
| | | | CHECKED | Landry Su | 2021.01.07 | |
| | UNIT mm | SCALE 10/1 | REVIEWED | | | NO. NTC224-AA1U-A240T |
| | | | APPROVALS | | Qiuyuan Chuang 2021.01.07 | |

TAIWAN MISAKI ELECTRONICS CO., LTD.



| 8 | INTERNAL STEM | 1 | SILICON RUBBER | BLACK COLOR |
|------------------------------------|----------------|------|-----------------------|---------------------------------|
| 7 | TAPE | 1 | POLYIMIDE | |
| 6 | CONTACT PLATE | 1 | STAINLESS STEEL PLATE | Ag PLATING |
| 5 | TERMINAL | 4 | COPPER ALLOY | Ag PLATING OVER Ni PLATING |
| 4 | NOUMENON COVER | 1 | POLYAMIDE RESIN | BLACK COLOR |
| 3 | FRAME | 1 | POLYAMIDE RESIN | BLACK COLOR |
| 2 | STEM | 1 | POLYAMIDE RESIN | BLACK COLOR |
| 1 | COVER | 1 | STAINLESS STEEL PLATE | |
| NO. | PART NAME | Q'TY | MATERIAL | SPECIFICATION |
| | | | | SIGNATURES |
| | | | | DATE |
| | | | | M O D E L |
| | | | | DRAWN Jane Shen 2021.01.07 |
| | | | | CHK'D Landry Pu 2021.01.07 |
| | | | | REV'D |
| | | | | APP'D Qiuyuan Chuang 2021.01.07 |
| | | | | TITLE TACT SWITCH |
| | | | | NO. NTC224-AA1U-A240T |
| | | | | DWG NO. TC224-01 |
| SYM | DESCRIPTION | DATE | APPROVED | |
| TAIWAN MISAKI ELECTRONICS CO.,LTD. | | | | |

SPECIFICATIONS FOR TACT SWITCH

RoHS Compliant

Model: NTC_224-AA_(G,U)-_ Series

1. Test condition:

Standard test conditions shall be 5~35℃ in temperature, 45~85%RH in humidity and 86~106Kpa in atmospheric pressure.

Should any doubt arise in judgment, tests shall be conducted at 20±2℃ in temperature, 60~70% RH in Humidity and 86~106 kpa in atmospheric pressure.

2. Operating temperature range: -40 ~ +90℃

Storage temperature range: -40 ~ +90℃

3. Construction:

3.1 Shape and dimension are subject to attached drawing regulation.

3.2 Appearance: Whole should be a good completion, no rust, no crack and good plating.

4. Rating: 1VA DC32V MAX.

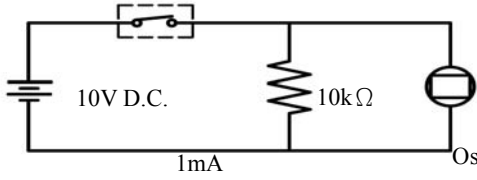
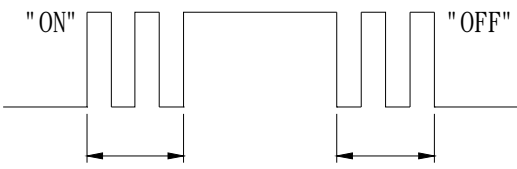
5. Electrical Performance:

| No. | Items | Test conditions | Specifications |
|-----|-----------------------|---|--|
| 5.1 | Contact Resistance | Shall be measure at 1kHz±200Hz (MAX. 20mV, MAX. 50mA.) or 1 A, 5V D.C. By voltage drop method. | 50mΩ Max. |
| 5.2 | Insulation Resistance | Shall be measured by applying 100V D.C. Between all terminals and between the terminals and the frame for 1 minute ± 5 seconds. | 1000MΩ Min. |
| 5.3 | Withstand Voltage | 250V A.C. (50~60Hz 2mA) shall be applied between all terminals and between the terminals and the frame for 1 minute. | No dielectric breakdown shall be occurred. |

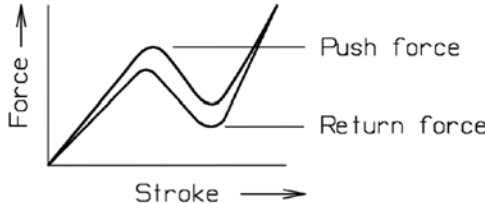
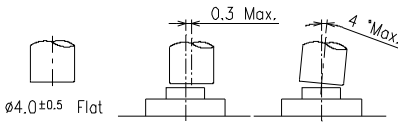
| | | | | | | | |
|-----|-------------|------|----------------|-------------|------------|-------------|-----------|
| | | | APPROVED BY | REVIEWED BY | CHECKED BY | DESIGNED BY | SPEC NO. |
| | | | | | | Jane Shen | SE-TC104N |
| | | | Qiuyuan Chuang | | | 2020.10.16 | PAGINATE |
| A | NEW RELEASE | | | | | | |
| SYM | DISCRIPTION | DATE | | | | | 1/5 |

SPECIFICATIONS FOR TACT SWITCH

RoHS Compliant

| No. | Items | Test conditions | Specifications |
|-----|--------|--|--|
| 5.4 | Bounce | <p>Lightly striking the center of the stem at a rate Encountered in normal use (3 to 4 operations per sec.)</p> <p>Switch</p>  <p>10V D.C. 10kΩ 1mA Oscilloscope</p>  | <p>ON: $\leq 3\text{m sec}$ OFF: $\leq 3\text{m sec.}$</p> |

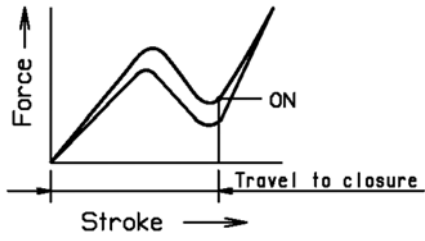
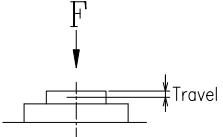
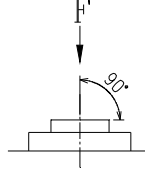
6. Mechanical Performance:

| No. | Items | Test conditions | Specifications |
|-----|-----------------|--|---|
| 6.1 | Operating Force | <p>Placing the switch such that the direction of switch operation is vertical and then gradually increasing the load applied to the center of the stem the maximum load required for the switch to come to a stop shall be measured.</p>   | <p>Push force: $240 \pm 50 \text{ gf}$</p> |

| | | | | | | | |
|-----|-------------|------|----------------|-------------|------------|-------------|-----------|
| | | | APPROVED BY | REVIEWED BY | CHECKED BY | DESIGNED BY | SPEC NO. |
| | | | | | | Jane Shen | SE-TC104N |
| | | | | | | 2020.10.16 | PAGINATE |
| A | NEW RELEASE | | Qiuyuan Chuang | | | | |
| SYM | DISCRIPTION | DATE | | | | | 2/5 |

SPECIFICATIONS FOR TACT SWITCH

RoHS Compliant

| No. | Items | Test conditions | Specifications |
|-----|---------------|--|--|
| 6.2 | Travel | <p>Placing the switch such that the direction of switch operation is vertical and then applying a below static load to the center of the stem, the travel distance for the switch to come to a stop shall be measured.</p>   | 0.4±0.2 mm |
| 6.3 | Push Strength | <p>Placing the switch such that the direction of switch operation is vertical and then a below station load shall be applied in the direction of stem operation.</p> <p>3kgf for 15 seconds.</p>  | <p>The terminals must not fall off and no structure is damaged .</p> <p>Item 5.1~5.4 shall be satisfied.</p> <p>Item 6.1~6.2 shall be satisfied.</p> |

APPROVED BY

REVIEWED BY

CHECKED BY

DESIGNED BY

SPEC NO.

Qiuyuan Chuang

Jane Shen
2020.10.16

SE-TC104N

PAGINATE

A NEW RELEASE

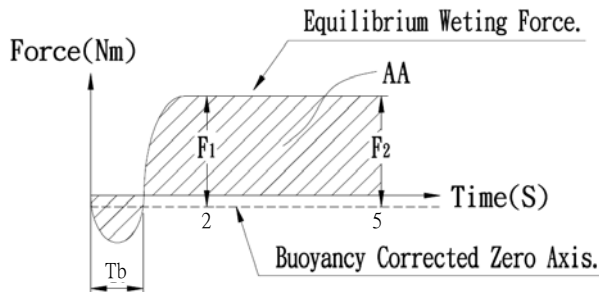
SYM DISCRIPTION

DATE

3/5

SPECIFICATIONS FOR TACT SWITCH

RoHS Compliant

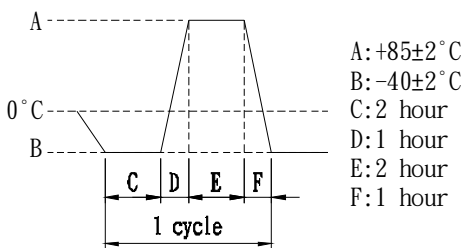
| No. | Items | Test conditions | Specifications | | | | | | | |
|-------|---|---|--|-------|----------|----|------------|----|---|----|
| 6.4 | Solderability | Test Temperature : 235 ± 5℃ Immersion Angle : 90° Immersion Speed : 1 mm/sec. Immersion Depth : 0.1mm Dwell Time : 5 seconds | Conform to the criteria in the left table. | | | | | | | |
| | | <div></div> <table><tr><th>Para.</th><th>Criteria</th></tr><tr><td>Tb</td><td>≤ 1 second</td></tr><tr><td>F1</td><td>50% of maximum theoretical wetting force at or before two seconds</td></tr><tr><td>F2</td><td>No less than 90% of the F1 Value</td></tr><tr><td>AA</td><td>Area calculated using sample buoyancy and 50% maximum theoretical force</td></tr></table> | | Para. | Criteria | Tb | ≤ 1 second | F1 | 50% of maximum theoretical wetting force at or before two seconds | F2 |
| Para. | Criteria | | | | | | | | | |
| Tb | ≤ 1 second | | | | | | | | | |
| F1 | 50% of maximum theoretical wetting force at or before two seconds | | | | | | | | | |
| F2 | No less than 90% of the F1 Value | | | | | | | | | |
| AA | Area calculated using sample buoyancy and 50% maximum theoretical force | | | | | | | | | |
| 6.5 | Solder Heat Resistance | (1) Manual soldering temperature: Temperature: 350℃ Max. Time: 3 Sec. Max. (2) Reflow Soldering: Number of reflow pass: 2 cycles. | Shall be free form pronounced deforming in appearance. Item 5.1~5.4 shall be satisfied. Item 6.1~6.2 shall be satisfied. | | | | | | | |

| | | | | | | | |
|-----|-------------|------|----------------|-------------|------------|-------------|-----------|
| | | | APPROVED BY | REVIEWED BY | CHECKED BY | DESIGNED BY | SPEC NO. |
| | | | | | | Jane Shen | SE-TC104N |
| | | | Qiuyuan Chuang | | | 2020.10.16 | PAGINATE |
| A | NEW RELEASE | | | | | | |
| SYM | DISCRIPTION | DATE | | | | | 4/5 |

SPECIFICATIONS FOR TACT SWITCH

RoHS Compliant

7. Weather Performance:

| No. | Items | Test conditions | Specifications |
|-----|-------------------|---|--|
| 7.1 | Humidity Test | (1) Temperature: $60\pm 2^{\circ}\text{C}$. (2) Relative humidity: 90~95% (3) Duration of test: 500 Hour. (4) Take off a drop water. (5) Standard conditions after test: 1 Hour. | Contact resistance: <u>500mΩ</u> Max Of item 5.2~5.4 shall be satisfied. Of item 6.1~6.2 shall be satisfied. |
| 7.2 | Heat Test | (1) Temperature: $90\pm 2^{\circ}\text{C}$. (2) Duration of test: 500 Hour. (3) Standard conditions after test: 1 Hour. | |
| 7.3 | Cold Test | (1) Temperature: $-40\pm 2^{\circ}\text{C}$. (2) Duration of test: 500 Hour. (3) Take off a drop water. (4) Standard conditions after test: 1 Hour. | |
| 7.4 | Waterproof test | Immersion tank water-level on enclosure: 0.15 M above top. 1 M above bottom. Duration of test : 30 min. | |
| 7.5 | Temperature cycle | (1) Test cycle: 20 cycles. (2) Standard conditions after test: 1 Hour.  <p>A: $+85\pm 2^{\circ}\text{C}$ B: $-40\pm 2^{\circ}\text{C}$ C: 2 hour D: 1 hour E: 2 hour F: 1 hour</p> | |

8. Durability:

| No. | Items | Test conditions | Specifications |
|-----|-----------|--|--|
| 8.1 | Life Test | (1) 5V D.C. , 5mA Resistance load. (2) Operating speed: 120 cycles/minute. (2) Push force: Maximum value of operation force. (3) Operation number: 100,000 times. | Contact Resistance: 2Ω MAX. Bounce: 20m sec Max.(ON,OFF) Operating Force: Within $\pm 30\%$ of specifications. Item 5.2 shall be satisfied. Item 6.2 shall be satisfied. |

APPROVED BY

REVIEWED BY

CHECKED BY

DESIGNED BY

SPEC NO.

Qinyuan Chuang

Jane Shen
2020.10.16

SE-TC104N
PAGINATE

A NEW RELEASE

SYM DISCRIPTION

DATE

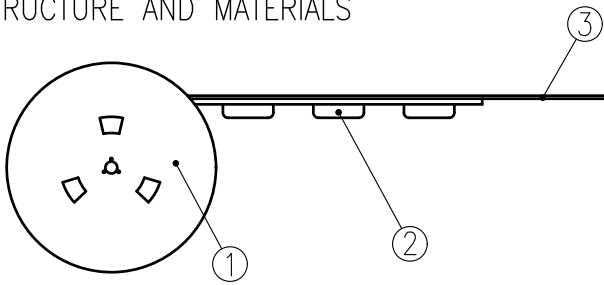
5/5

TAIWAN MISAKI ELECTRONICS CO., LTD.

THE PACKING SPECIFICATIONS

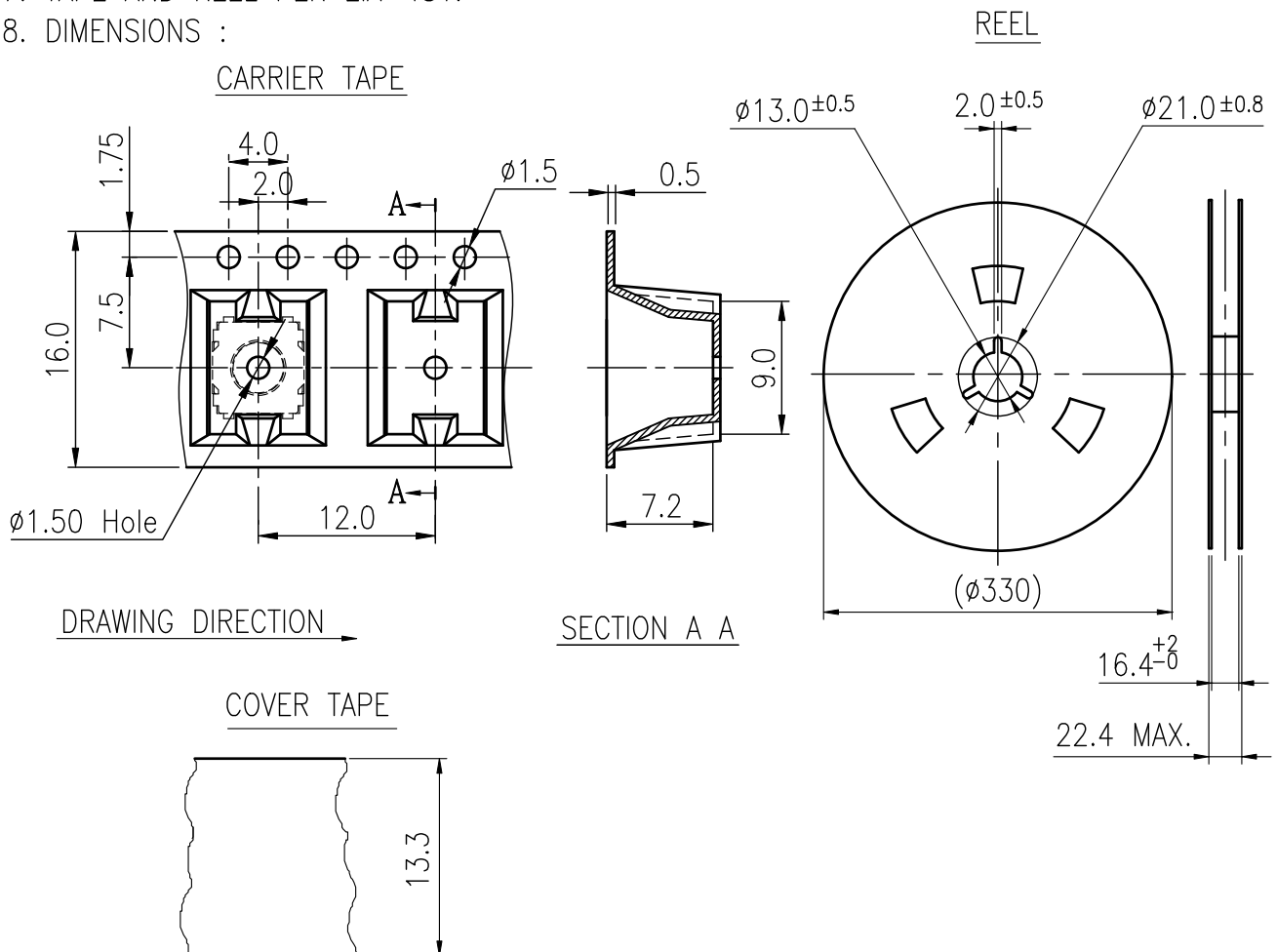
RoHS Compliant

1. STRUCTURE AND MATERIALS



| ③ | COVER TAPE | POLYESTER |
|-----|--------------|-------------|
| ② | CARRIER TAPE | POLYSTYRENE |
| ① | REEL | POLYSTYRENE |
| NO. | PARTS NAME | MATERIALS |

- PACKAGING QUANTITY : 800 PCS/REEL
- MORE THAN 10 EMPTY POCKETS SHOULD BE REMAINED AT BOTH ENDS OF THE CARRIER TAPE FOR EACH REEL.
- SHORTAGE LESS THAN 10 PCS A REEL IS ACCEPTABLE BUT MORE THAN 3 RUNNING POCKETS SHORTAGE IS NOT ALLOWED.
- STRIPPING STRENGTH OF COVER TAPE IS BETWEEN 10 gf TO 130 gf AND STRIPPING ANGLE SHOULD BE WITHIN 165° ~ 180°.
- THE PRODUCT IN THE POCKET OF CARRIER TAPE SHOULD BE PLACED IN A SPECIFIED CORRECT POSITION.
- TAPE AND REEL PER EIA-481.
- DIMENSIONS :



| | | | | APPROVED BY | REVIEWED BY | CHECKED BY | DESIGNED BY | MODEL NO. |
|-----|-------------|------|----------|----------------|-------------|------------|-------------|----------------|
| | | | | Qinyuan Chuang | | | Jane Shen | NTC_224-AA_U-A |
| | | | | | | | | PAGINATE. |
| | | | | | | | | 1/1 |
| | | | | | | | | SPEC NO. |
| | | | | | | | | P-827 |
| SYM | DISCRIPTION | DATE | APPROVED | | | | | |

TAIWAN MISAKI ELECTRONICS CO.,LTD.