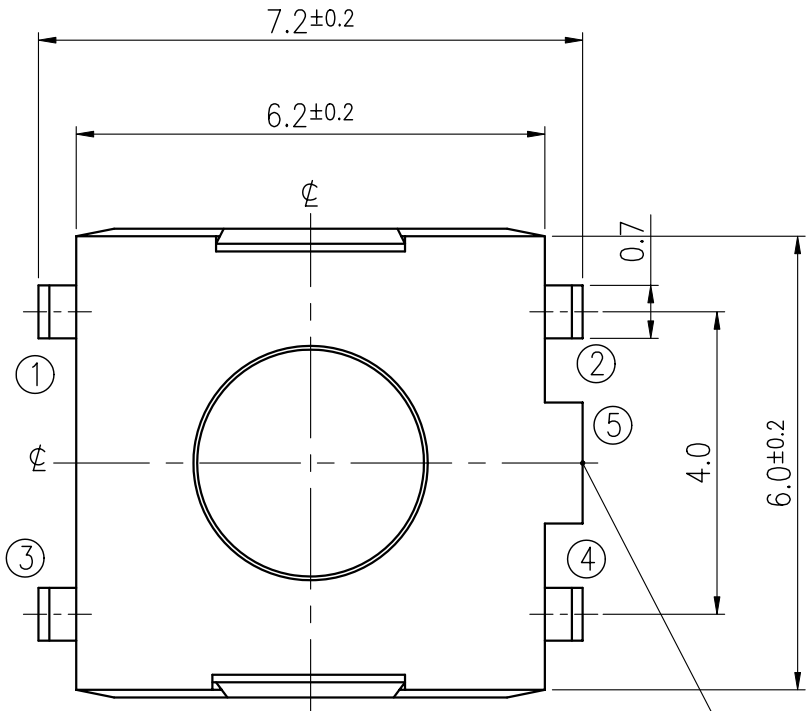
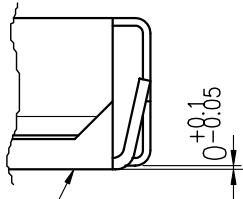
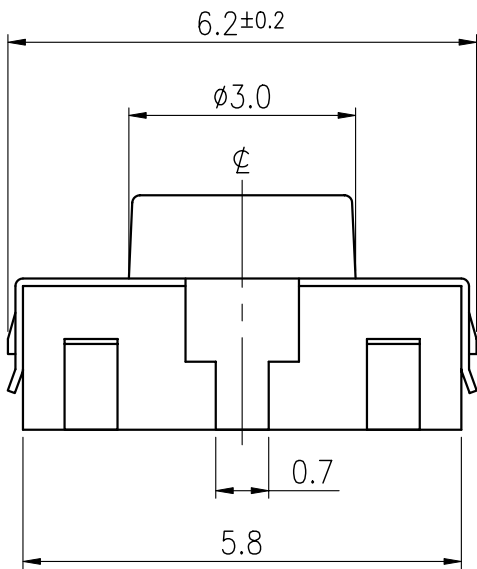
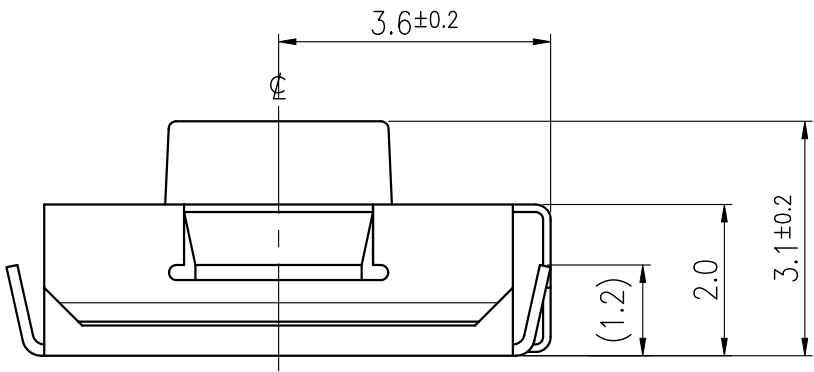


RoHS Compliant

T-MEC
TAIWAN MISAKI ELECTRONICS CO., LTD.
ISSUED
2013.03.12
RD DCC



For fixing or ground function only
Do not form a circuit with terminals.



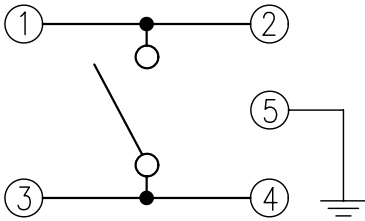
P.C.B MOUNTING FACE

TERMINALS DETAIL

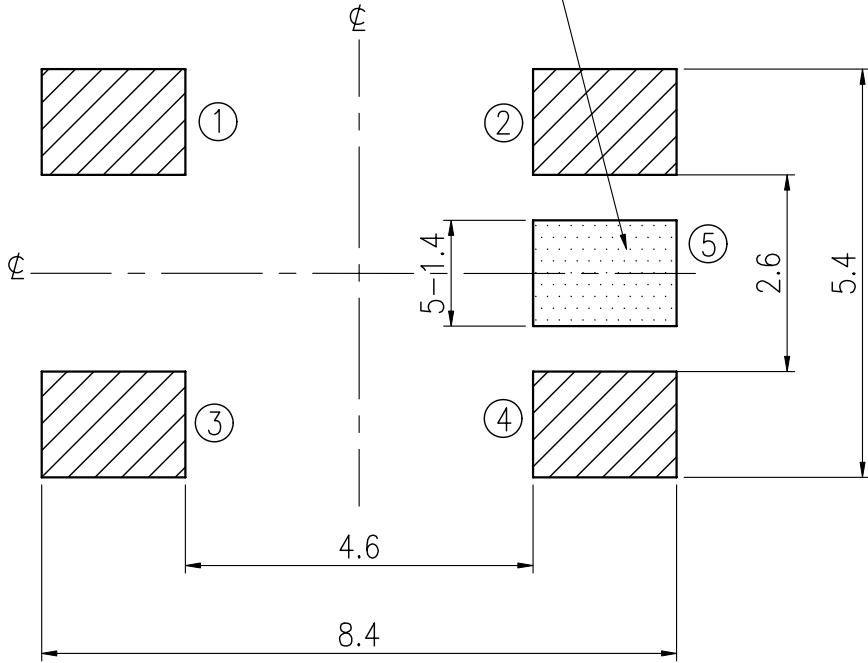
REVISIONS							
Rev	DESCRIPTION	DATE	DRAWER	Rev	DESCRIPTION	DATE	DRAWER
A	Initial Drawing	2013.01.11	Jane Shen	C			
B				D			

SPECIFICATIONS			
RATING	DC12V 50mA	TIMING	
CONTACT RESISTANCE	100mΩ MAX.	OPERATION (TORQUE)	160±50gf
INSULATION RESISTANCE	DC500V-100MΩ MIN.	STROKE (ANGLE)	0.25±0.2 mm
WITHSTAND VOLTAGE	AC250V-1 MINUTE.	CONTACT RESISTANCE	2Ω MAX.
REMARKS:		(AFTER 1,000,000 CYCLES LIFE TEST)	

SCHEMATIC



P.C.B. MOUNTING PLAN



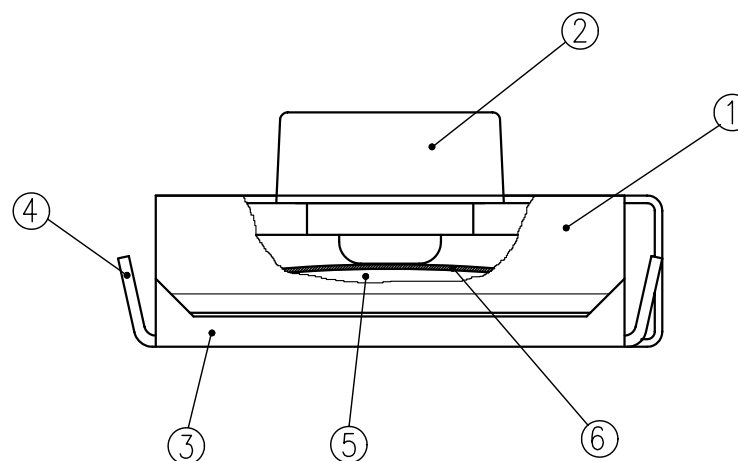
Ground terminal can
be effective even
if not soldered.

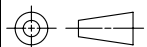
HATCHED AREA SHOWS SOLDERING LAND

TOLERANCES UNLESS OTHERWISE SPECIFIED ±0.1		SIGNATURES		DATE	MODEL
		DRAWER	Jane Shen	2013.01.11	TACT SWITCH
		CHECKED	Jamie Li	2013.02.06	
	UNIT mm	SCALE 10/1	REVIEWED		NO. NTC020-CK1J-B160Y
			APPROVALS	Dennis Hung 2013.02.06	

TAIWAN MISAKI ELECTRONICS CO., LTD.

RoHS Compliant



6	TAPE	1	POLYIMIDE			
5	CONTACT PLATE	1	STAINLESS STEEL PLATE	Ag-PLATING		
4	TERMINAL	4	COPPER ALLOY	Ag-PLATING		
3	FRAME	1	LIQUID CRYSTAL POLYMER	BLACK COLOR		
2	STEM	1	LIQUID CRYSTAL POLYMER	YELLOW COLOR		
1	COVER	1	NICKEL SILVER			
NO.	PART NAME	Q'TY	MATERIAL	SPECIFICATION		
				SIGNATURES	DATE	M O D E L
				DRAWN Jane Shen	2013.01.11	TITLE TACT SWITCH
				CHK'D Jamie Li	2013.02.06	
				REV'D		NO. NTC020-CK1J-B160Y
				APP'D Dennis Hung	2013.02.06	
SYM	DESCRIPTION	DATE	APPROVED	DWG NO. TC020-07		
TAIWAN MISAKI ELECTRONICS CO.,LTD.						

SPECIFICATIONS FOR TACT SWITCH

RoHS Compliant

Model: NTC020 Series

1. Test condition:

Standard test conditions shall be 5~35°C in temperature, 45~85%RH in humidity and 86~106Kpa in atmospheric pressure. Should any doubt arise in judgment, tests shall be conducted at 20±2°C in temperature, 60~70% RH in Humidity and 86~106 kpa in atmospheric pressure.

2. Operating temperature range: -40 ~ +85°C

Preservative temperature range: -40 ~ +85°C

3. Construction:

3.1 Shape and dimension are subject to attached drawing regulation.

3.2 Appearance: Whole should be a good completion, no rust, no crack and good plating.

4. Rating: 12V D.C. , 50mA.

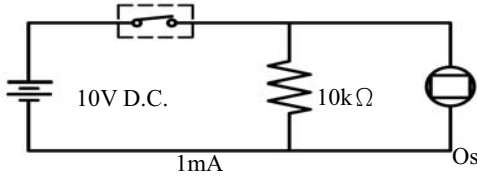
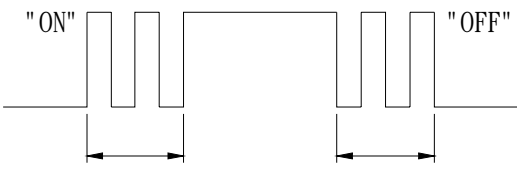
5. Electrical Performance:

No.	Items	Test conditions	Specifications
5.1	Contact Resistance	Shall be measure at 1kHz±200Hz (MAX. 20mV, MAX. 50mA.) or 1 A, 5V D.C. By voltage drop method.	100mΩ Max.
5.2	Insulation Resistance	Shall be measured by applying 500V D.C. Between all terminals and between the terminals and the frame for 1 minute ± 5 seconds.	100 MΩ Min.
5.3	Withstand Voltage	250V A.C. (50~60Hz 2mA) shall be applied between all terminals and between the terminals and the frame for 1 minute.	No dielectric breakdown shall be occurred.

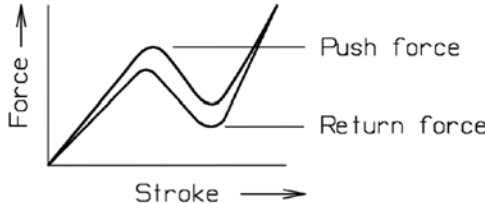
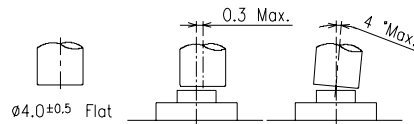
			APPROVED BY	REVIEWED BY	CHECKED BY	DESIGNED BY	SPEC NO.
			Dennis Hung 2011.08.04		Jamie Li 2011.08.04	Jane Shen 2011.08.04	SE-TC26N
A	NEW RELEASE						PAGINATE
SYM	DISCRIPTION	DATE					1/5

SPECIFICATIONS FOR TACT SWITCH

RoHS Compliant

No.	Items	Test conditions	Specifications
5.4	Bounce	<p>Lightly striking the center of the stem at a rate Encountered in normal use (3 to 4 operations per sec.)</p> <p>Switch</p>  <p>10V D.C. 10kΩ 1mA Oscilloscope</p> 	<p>ON: 10m sec Max. OFF: 10m sec Max.</p>

6. Mechanical Performance:

No.	Items	Test conditions	Specifications
6.1	Operating Force	<p>Placing the switch such that the direction of switch operation is vertical and then gradually increasing the load applied to the center of the stem the maximum load required for the switch to come to a stop shall be measured.</p>  	<p>Push force:</p> <p>160 ± 50 gf</p>

APPROVED BY

REVIEWED BY

CHECKED BY

DESIGNED BY

SPEC NO.

Dennis Hung

Jamie Li
2011.08.04

Jane Shen
2011.08.04

SE-TC26N

PAGINATE

2011.08.04

2/5

A NEW RELEASE

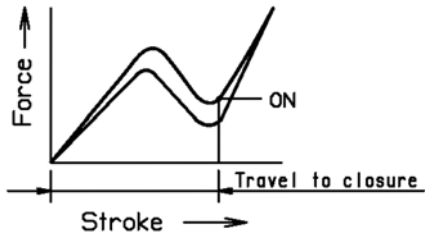
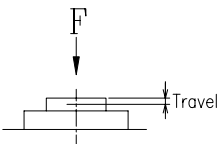
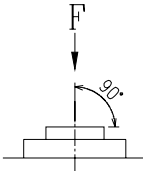
SYM DISCRIPTION

DATE

TAIWAN MISAKI ELECTRONICS CO., LTD.

SPECIFICATIONS FOR TACT SWITCH

RoHS Compliant

No.	Items	Test conditions	Specifications
6.2	Travel	<p>Placing the switch such that the direction of switch operation is vertical and then applying a below static load to the center of the stem, the travel distance for the switch to come to a stop shall be measured.</p>  	0.25 +0.2/-0.1 mm.
6.3	Push Strength	<p>Placing the switch such that the direction of switch operation is vertical and then a below station load shall be applied in the direction of stem operation.</p> <p>3kgf for 15 seconds.</p> 	<p>The terminals must not fall off and no structure is damaged . Item 5.1~5.4 shall be satisfied. Item 6.1~6.2 shall be satisfied.</p>

APPROVED BY

REVIEWED BY

CHECKED BY

DESIGNED BY

SPEC NO.

Dennis Hung

Jamie Li
2011.08.04

Jane Shen
2011.08.04

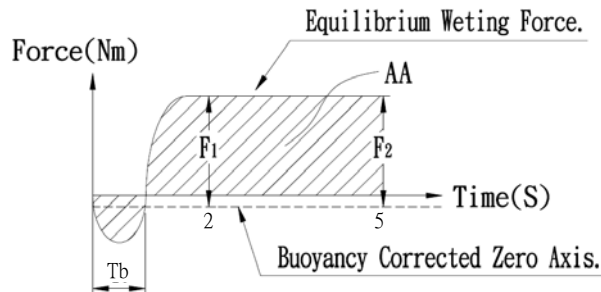
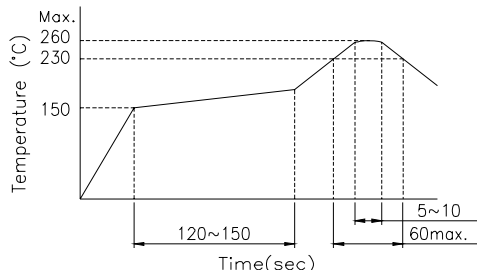
SE-TC26N
PAGINATE

2011.08.04

3/5

SPECIFICATIONS FOR TACT SWITCH

RoHS Compliant

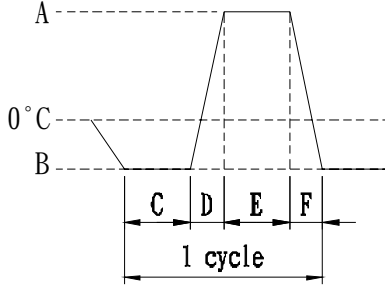
No.	Items	Test conditions	Specifications										
6.4	Solderability	Test Temperature : 235 ± 5℃ Immersion Angle : 90° Immersion Speed : 1 mm/sec. Immersion Depth : 0.1mm Dwell Time : 5 seconds  <table><tr><th>Para.</th><th>Criteria</th></tr><tr><td>Tb</td><td>≤ 1 second</td></tr><tr><td>F1</td><td>50% of maximum theoretical wetting force at or before two seconds</td></tr><tr><td>F2</td><td>No less than 90% of the F1 Value</td></tr><tr><td>AA</td><td>Area calculated using sample buoyancy and 50% maximum theoretical force</td></tr></table>	Para.	Criteria	Tb	≤ 1 second	F1	50% of maximum theoretical wetting force at or before two seconds	F2	No less than 90% of the F1 Value	AA	Area calculated using sample buoyancy and 50% maximum theoretical force	Conform to the criteria in the left table.
		Para.	Criteria										
Tb	≤ 1 second												
F1	50% of maximum theoretical wetting force at or before two seconds												
F2	No less than 90% of the F1 Value												
AA	Area calculated using sample buoyancy and 50% maximum theoretical force												
6.5	Solder Heat Resistance <p>(1) Manual soldering temperature: Temperature: 350℃ Max. Time: 3 Sec. Max.</p> <p>(2) Reflow Soldering: Number of reflow pass: 2 cycles.</p> 												

			APPROVED BY	REVIEWED BY	CHECKED BY	DESIGNED BY	SPEC NO.
			<i>Dennis Hung</i>		Jamie Li	Jane Shen	SE-TC26N
			2011.08.04		2011.08.04	2011.08.04	PAGINATE
A	NEW RELEASE						
SYM	DISCRIPTION	DATE					4/5

SPECIFICATIONS FOR TACT SWITCH

RoHS Compliant

7. Weather Performance:

No.	Items	Test conditions	Specifications
7.1	Humidity Test	(1) Temperature: $60\pm 2^{\circ}\text{C}$. (2) Relative humidity: 90~95% (3) Duration of test: 500 Hour. (4) Take off drop water. (5) Standard conditions after test: 1 Hour.	Contact resistance: 500mΩ Max Item 5.2~5.4 shall be satisfied. Item 6.1~6.2 shall be satisfied.
7.2	Heat Test	(1) Temperature: $85\pm 2^{\circ}\text{C}$. (2) Duration of test: 500 Hour. (3) Standard conditions after test: 1 Hour.	
7.3	Cold Test	(1) Temperature: $-40\pm 2^{\circ}\text{C}$. (2) Duration of test: 500 Hour. (3) Take off drop water. (4) Standard conditions after test: 1 Hour.	Contact resistance: 500mΩ Max Item 5.2~5.4 shall be satisfied. Item 6.1~6.2 shall be satisfied.
7.4	Temperature cycle	(1) Test cycle: 20 cycles. (2) Standard conditions after test: 1 Hour.  <p>A: $+85\pm 2^{\circ}\text{C}$ B: $-40\pm 2^{\circ}\text{C}$ C: 2 hour D: 1 hour E: 2 hour F: 1 hour</p>	

8. Durability:

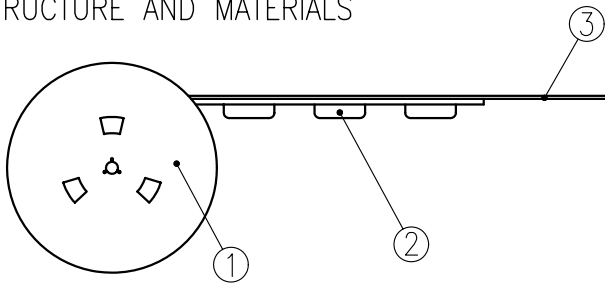
No.	Items	Test conditions	Specifications
8.1	Life Test	(1) 5V D.C. , 5mA Resistance load. (2) Operating speed: 120 cycles/minute. (2) Push force: Maximum value of operation force. (3) Operation number: 1,000,000 times.	Contact Resistance: 2Ω MAX. Bounce: 20m sec Max.(ON,OFF) Operating Force: Within $\pm 30\%$ of specifications. Item 5.2 shall be satisfied. Item 6.2 shall be satisfied.

			APPROVED BY	REVIEWED BY	CHECKED BY	DESIGNED BY	SPEC NO.
			Dennis Hung 2011.08.04		Jamie Li 2011.08.04	Jane Shen 2011.08.04	SE-TC26N
A	NEW RELEASE						PAGINATE
SYM	DISCRIPTION	DATE					5/5

THE PACKING SPECIFICATIONS

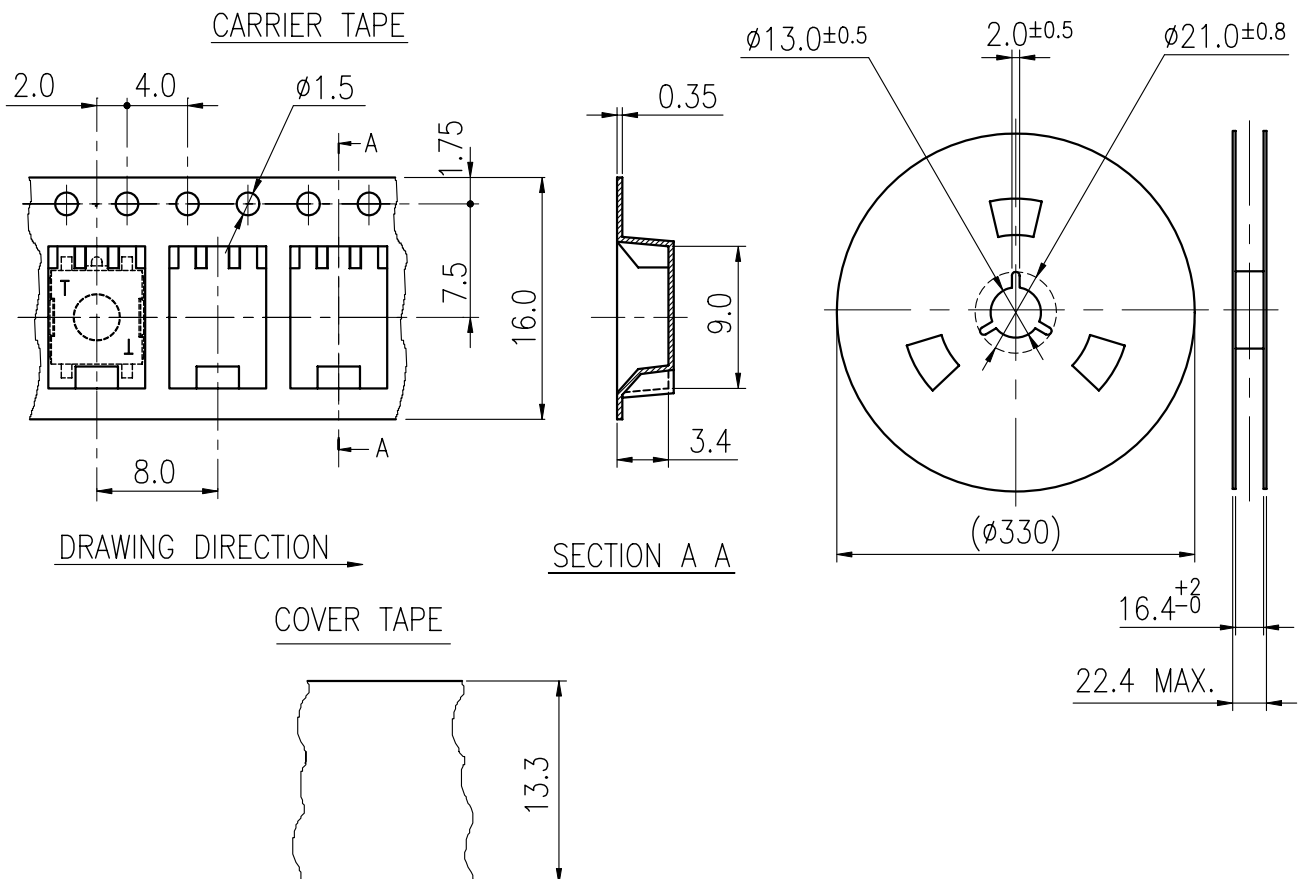
RoHS Compliant

1. STRUCTURE AND MATERIALS



③	COVER TAPE	POLYESTER
②	CARRIER TAPE	POLYSTYRENE
①	REEL	POLYSTYRENE
NO.	PARTS NAME	MATERIALS

- PACKAGING QUANTITY : 2,200 PCS/REEL
- MORE THAN 10 EMPTY POCKETS SHOULD BE REMAINED AT BOTH ENDS OF THE CARRIER TAPE FOR EACH REEL.
- SHORTAGE LESS THAN 10 PCS A REEL IS ACCEPTABLE BUT MORE THAN 3 RUNNING POCKETS SHORTAGE IS NOT ALLOWED.
- STRIPPING STRENGTH OF COVER TAPE IS BETWEEN 10 gf TO **130** gf AND STRIPPING ANGLE SHOULD BE WITHIN 165° ~ 180°.
- THE PRODUCT IN THE POCKET OF CARRIER TAPE SHOULD BE PLACED IN A SPECIFIED CORRECT POSITION.
- TAPE AND REEL PER EIA-481.
- DIMENSIONS :



				APPROVED BY	REVIEWED BY	CHECKED BY	DESIGNED BY	MODEL NO.
				<i>Dennis Hung</i>		<i>Jamie Li</i>	<i>Jane Shen</i>	NTC020-CK1J-B160Y
				2011.11.22		2011.11.21	2011.11.21	PAGINATE.
								1/1
								SPEC NO.
								P-542
SYM	DISCRIPTION	DATE	APPROVED					

TAIWAN MISAKI ELECTRONICS CO.,LTD.