

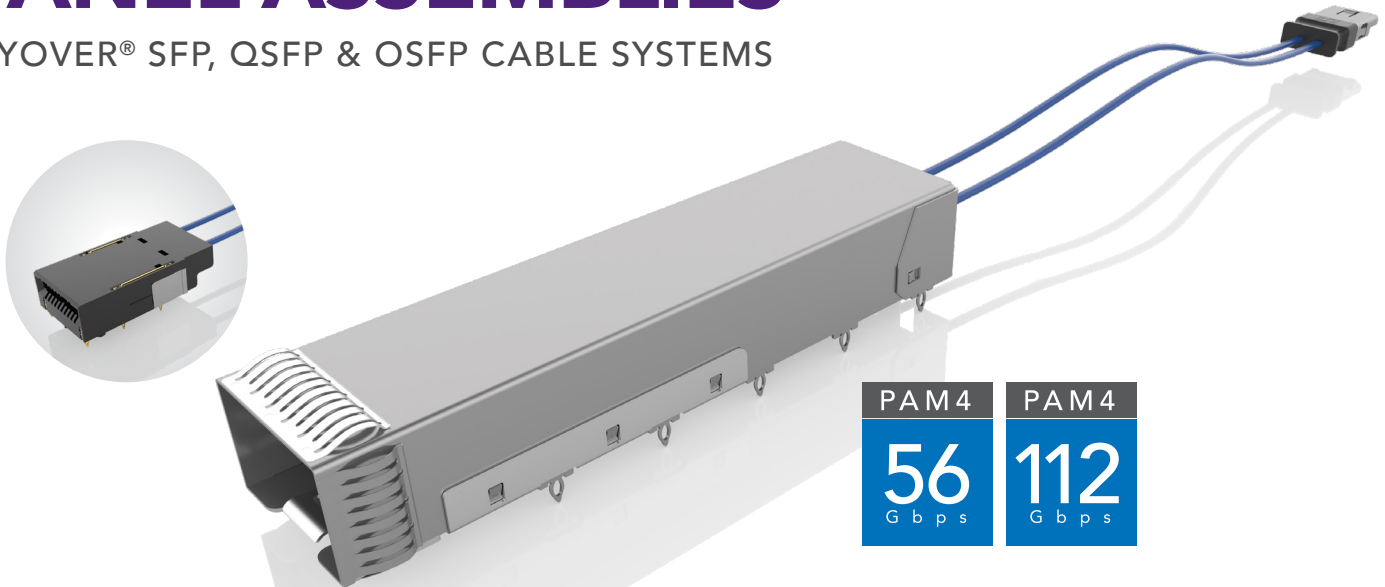


FLYOVER[®]

FLYOVER[®]

PANEL ASSEMBLIES

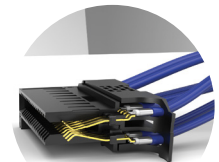
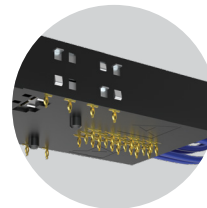
FLYOVER[®] SFP, QSFP & OSFP CABLE SYSTEMS



FEATURES & BENEFITS

Flyover[®] panel cable systems utilize Samtec Flyover[®] cable technology to route data above lossy PCB through Eye Speed[®] ultra low skew twinax cable, simplifying board layout and extending signal reach. The modular design enables optimized systems that improve heat management, increase signal integrity performance, build in scalability for future upgrades and reduce costs by creating a multifunction board.

- High-speed contacts directly soldered to Eye Speed[®] ultra low skew twinax
- Low-speed and power positions transmitted through press-fit contact tails
- Multiple end 2 (near-chip) options for design flexibility
- Cages and heatsinks available for optimized thermal performance
- SI Evaluation Kits available, visit samtec.com/kits



FLYOVER[®] SFP SYSTEM

- 112 Gbps PAM4 performance
- Belly-to-belly capable for maximum density
- Accepts all MSA compliant SFP pluggable modules
- Eye Speed Thinax[™] ultra low skew twinax cable (< 3.5 ps/m)

FLYOVER[®] OSFP SYSTEM

- Up to 800 Gbps aggregate (112 Gbps PAM4)
- 8 Channels (x8 bidirectional, 16 differential pairs)
- Belly-to-belly capable for maximum density
- Eye Speed Thinax[™] ultra low skew twinax cable (< 3.5 ps/m)
- In development: Flyover[®] OSFP 224 Gbps solution (FOSFP-2)

FLYOVER[®] QSFP SYSTEM

- 4 Channels (x4 bidirectional, 8 differential pairs)
- Up to 400 Gbps aggregate (112 Gbps PAM4)
- Compatible with all MSA QSFP pluggables
- Eye Speed[®] ultra low skew twinax cable (< 3.5 ps/m)

FLYOVER[®] QSFP DOUBLE DENSITY

- 8 Channels (x8 bidirectional, 16 differential pairs)
- FQSFP-DD: Up to 400 Gbps aggregate (56 Gbps PAM4)
- FQSFP-D8: Up to 800 Gbps aggregate (112 Gbps PAM4)
- Belly-to-belly capable for maximum density
- Backward compatible with QSFP modules
- Eye Speed[®] ultra low skew twinax or Eye Speed Thinax[™] twinax cable (< 3.5 ps/m)

FLYOVER® QSFP CABLE ASSEMBLY

FQSFP	LEAD STYLE	CABLE LENGTH	PLATING	CONTACT TYPE	END OPTION
-------	------------	--------------	---------	--------------	------------

-01
= 10 Low-Speed,
8 Pairs High-Speed

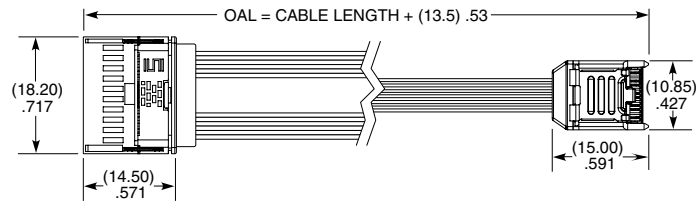
-"XX.X"
= Length in inches
04.0" (101.6 mm)
minimum

-L
= 10 μ" (0.25 μm)
Gold over
50 μ" (1.27 μm)
Ni on contact area,
Matte Tin on tail

-PF
= Press-fit

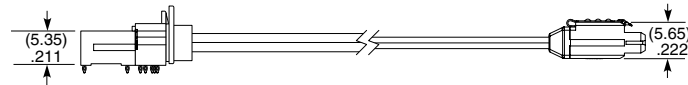
-3
= ECUE
-4
= ARC6-8

FQSFP



PRESS-FIT TOOLING

CAT-PT-FQSFP-01
For more information, visit
www.samtec.com/tooling



FQSFP-01-XX.X-L-PF-4 SHOWN

QSFCP	CAGE OPTION	NUMBER OF PORTS	EMI PANEL OPTION	OPTION	FLYOVER
-------	-------------	-----------------	------------------	--------	---------

-1
= Single Stack

-1
= One Port

-S
= Spring
Fingers

(Leave blank for no Light Pipe)

(Leave blank for no flyover)

-2
= Two Ports

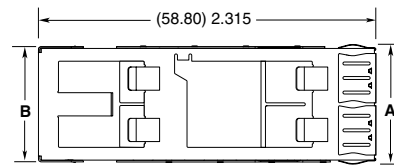
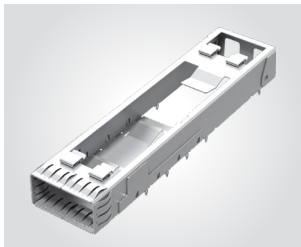
-LP
= Light Pipe
(1 & 4 ports only)

-F
= Flyover

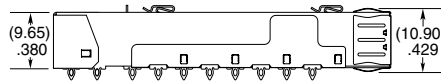
-4
= Four Ports

-N
= No heat sink closed top
(Not available with -LP)

QSFCP



NO. OF PORTS	A	B	C
-1	(20.62) .812	(19.85) .781	(19.00) .748
-2	(39.62) 1.560	(38.85) 1.530	(38.00) 1.496
-4	(77.62) 3.056	(76.85) 3.026	(76.00) 2.992



QSFCP-1-1-S-F SHOWN

PRESS-FIT TOOLING

CAT-PT-FQSFP-03-XX
For more information, visit
www.samtec.com/tooling

HEAT SINKS

PART NUMBER	HEAT SINK HEIGHT
HS-QSFP-P1-01	(4.20 mm) .165"
HS-QSFP-P1-02	(6.50 mm) .256"
HS-QSFP-P1-03	(13.50 mm) .531"
HS-QSFP-P1-04	(1.50 mm) .059"

LIGHT PIPES

PART NUMBER	NO. OF PORTS
LP-FQSFP-01	1 pipe
LP-FQSFP-02	2 pipes
LP-FQSFP-04	4 pipes

View complete specifications at samtec.com?LP-FQSFP

Notes:

Some sizes, styles and options are non-standard, non-returnable.

For Light Pipe, add -LP to the end of part number.
View complete specifications at samtec.com?HS-QSFP

View complete specifications at: samtec.com?FQSFP & samtec.com?QSFCP