

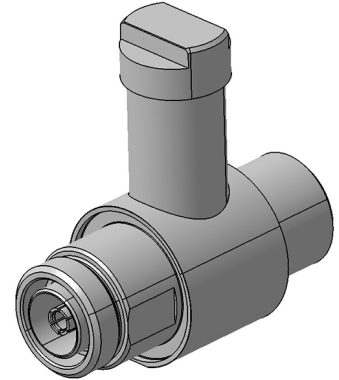
## EMP Protector 3409.41.0085

### Description

High-power/low-IM GDT hybrid technology

#### Benefits

Multi-band operation  
DC continuity for remote powering  
The protector can also be installed reversely  
AISG compliant for 2.176 MHz carrier  
Replaceable GDT 9071.99.0548, (90 V) included  
Compliant to IEC 61643-21



### Product Configuration

Main path connectors	Port 1: <u>unprotected</u> , 7/16 jack (female) - Port 2: <u>protected</u> , 7/16 jack (female)
Mounting and grounding	MH74 (bulkhead mounting), brk (bracket)
Side of bulkhead	protected side

### Technical Data

#### Electrical Data

Impedance	50 $\Omega$			
Frequency range	2.176 MHz	820 - 2500 MHz	820 - 970 MHz	1700 - 2500 MHz
Return loss	20 dB typ.	$\geq 20.8$ dB	$\geq 23.2$ dB	$\geq 23.2$ dB
Insertion loss	0.1 dB typ.	$\leq 0.1$ dB	$\leq 0.1$ dB	$\leq 0.1$ dB
RF CW power		$\leq 1500$ W	$\leq 3000$ W	$\leq 1500$ W
PIM 3rd order		-150 dBc typ.	-150 dBc typ.	-150 dBc typ.
DC supply voltage	$\leq 48$ V			
DC current	$\leq 10$ A			
Surge current handling capability	30 single / 20 multiple kA (test pulse 8/20 $\mu$ s)			
Residual pulse energy	350 $\mu$ J typically (test pulse 4 kV 1.2/50 $\mu$ s / 2 kA 8/20 $\mu$ s) main path - protected side			

#### Mechanical Data

Number of matings	100
Weight	260 g

#### Environmental Data

Operating temperature	-40 °C to +85 °C
Waterproof degree	IP65 (according to IEC 60529, data refer to the coupled state)
2011/65/EU (RoHS - including 2015/863 and 2017/2102)	compliant acc. Annex III

#### Material Data

Piece Parts	Material	Surface Plating
Housing	Aluminium	Chromatized
Port 1 center contact	Bronze	Silver Plating
Port 2 center contact	Bronze	Silver Plating

### Related Documents

Outline drawing	DOU-00154641
Mounting instruction	DOC-0000447876

### Remarks

Ordering information for optional stainless steel mounting/grounding accessory:  
9075.99.0108: threaded stud M8, length 30mm, hexagonal nut M8, washer and tooth washer  
Recommendation: if this protector is mated with connectors made of copper-alloy base material and trimetal or nickel plating the connector area must be taped to improve long-term durability.

## EMP Protector 3409.41.0085