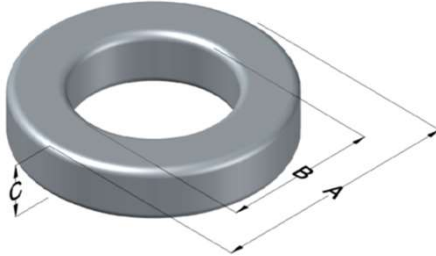




0077775A7

110 Delta Drive
 Pittsburgh, PA 15238
 NAFTA Sales: (1)800-245-3984
 HK Sales : (852)3102-9337
 magnetics@spang.com
 www.mag-inc.com



Kool M μ Permeability (μ)	A _L (nH/T ²)	Core Marking			Coating Color
		Lot Number	Part Number	Inductance Grade	
26	88 ± 8%	XXXXXX	77775A7	N/A	Black

Dimensions	Uncoated		Coated Limits			Packaging
	(mm)	(in)	(mm)	(in)		
OD (A)	77.80	3.063	78.94	3.108	max	Cardboard cut-outs Box Qty= 25 pcs
ID (B)	39.34	1.549	38.33	1.509	min	
HT (C)	25.86	1.018	26.85	1.057	max	

Electrical Characteristics			Physical Characteristics						
Watt Loss @ 100kHz, 100mT max (mW/cm ³)	DC Bias min (oersteds)		Voltage Breakdown wire to wire min (V _{AC})	Break Strength min (kg)	Window Area W _a (mm ²)	Cross Section A _e (mm ²)	Path Length L _e (mm)	Volume V _e (mm ³)	Weight (g)
	80%	50%							
900	95	205	3000	141.0	1,150	492	177.2	87,100	490

Winding Information					Temperature Rating	
Winding Length Per Turn				Wound Coil Dimensions (mm)		Curie Temp: 500°C
Winding Factor	(mm)	Winding Factor	(mm)	40% Winding Factor	OD	86.9
					HT	38.9
0%	94.3	40%	114	Completely Full Window	Max OD	86.9
20%	104	45%	117		Max HT	54.9
25%	107	50%	119	Surface Area (mm ²)		
30%	109	60%	125	Unwound Core		17,000
35%	112	70%	132	40% Winding Factor		25,000
Coating Temp (Continuous up to): 200°C						
Notes:						

