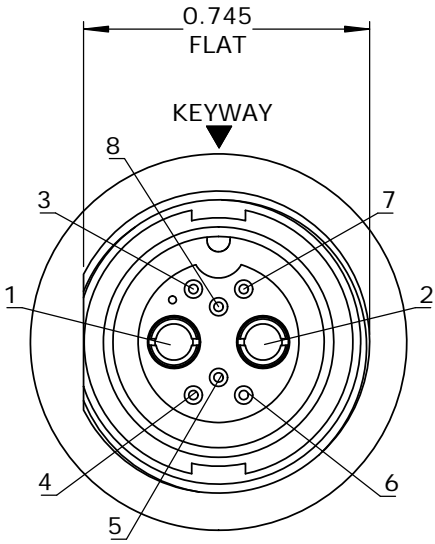
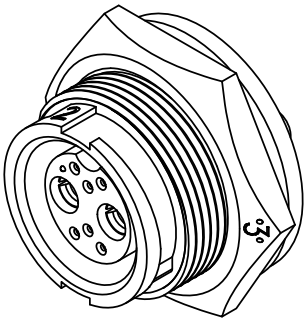
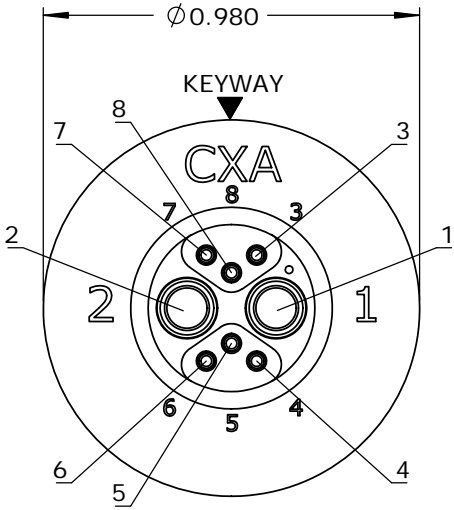
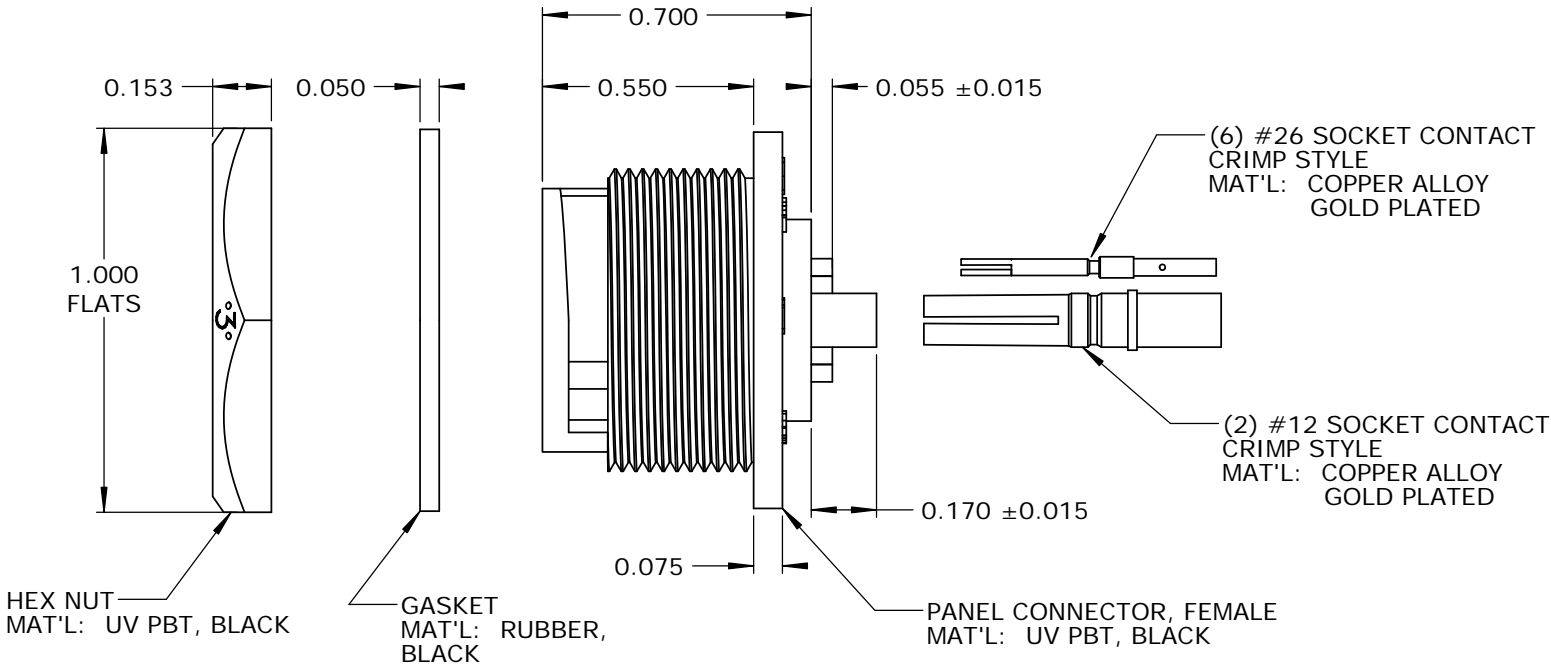


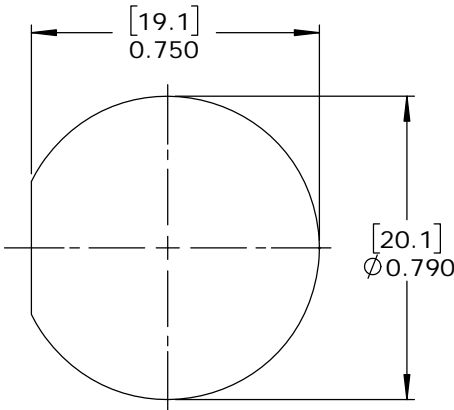
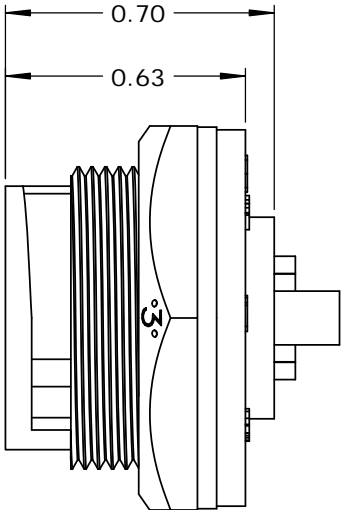
NOTES:  
1. PARTS TO BE BULK PACKED.  
2. CONTACTS ARE SUPPLIED LOOSE.  
3. ALL DIMENSIONS ARE FOR REFERENCE ONLY EXCEPT WHERE NOTED WITH TOLERANCE.



FACE VIEW



WIRE VIEW



RECOMMENDED PANEL CUT-OUT  
TOLERANCE ±.003 [0.08]

CUSTOMER APPROVAL

THIS DOCUMENT CONTAINS CONFIDENTIAL INFORMATION PROPRIETARY TO CONXALL CORPORATION. ANY REPRODUCTION, DISCLOSURE, OR USE OF THIS DOCUMENT /INFORMATION IS EXPRESSLY PROHIBITED UNLESS AUTHORIZED IN WRITING BY CONXALL CORPORATION.

APPROVED BY: \_\_\_\_\_

DATE: \_\_\_\_\_

RoHS COMPLIANT

A	AB	05-09-19	RELEASE PER DOR 14-6281TC				
REV.	INIT.	DATE	DESCRIPTION				
<div>ALL INFORMATION ILLUSTRATED IS THE PROPERTY OF "CONXALL CORPORATION." UNAUTHORIZED DUPLICATION OR DISTRIBUTION OF THIS DOCUMENT IS PROHIBITED.</div>			ORIG. DRAWN BY: AB      DATE: 07-18-14		<div>CONXALL</div> <div>601 E. WILDWOOD VILLA PARK, IL 60181</div>		
			CHECKED BY:				
<div>ALL UNITS ARE IN FEET, INCHES, FRACTION OF INCHES AND DECIMALS.</div>			APPROVED BY:		<div>TITLE: PANEL CONNECTOR KIT (2)#12 + (6)#26 SOCKET CONTACTS, CRIMP MULTI-CON-X, WEATHER RESISTANT CUSTOMER: STANDARD PRODUCT</div>		
			SCALE NTS	SIZE B		SHEET 1 OF 1	
			FILE: SAME AS P/N			DIRECTORY: SLW	PART NUMBER: W4B80-8SG-300
			<div>▷ = CRITICAL CHARACTERISTIC FLAG PER SPEC. XXXX</div>			REV A	

# Mouser Electronics

Authorized Distributor

Click to View Pricing, Inventory, Delivery & Lifecycle Information:

[Switchcraft:](#)

[W4B80-8SG-300](#)