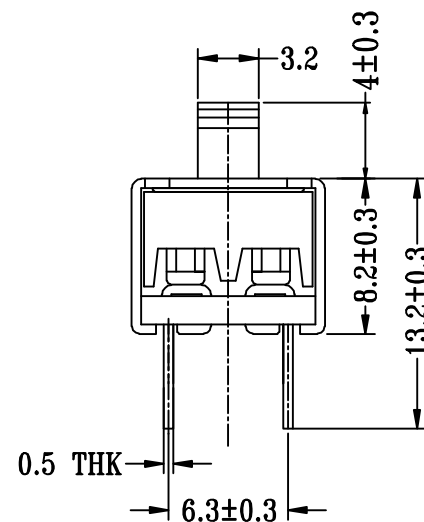
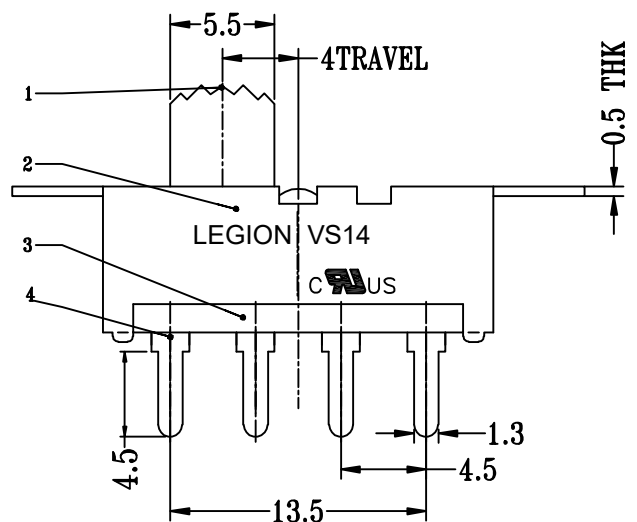
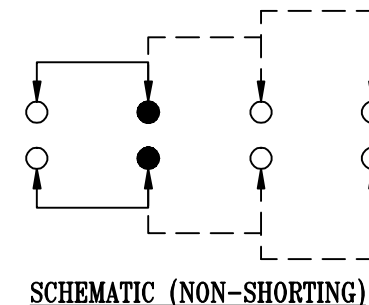
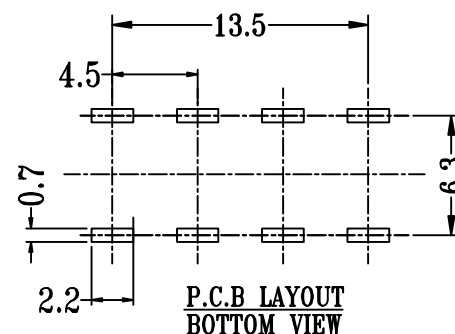
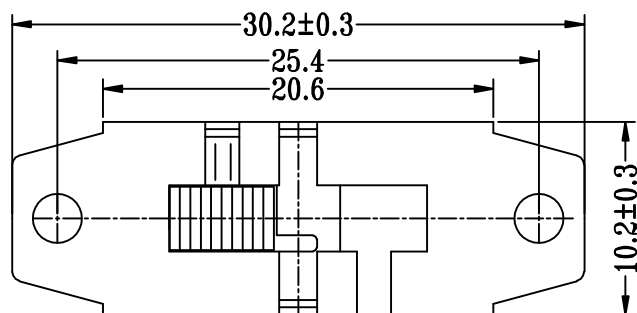


CAD FILE:



| | | | | | | | | | |
|-----|----------------|----------------|------|-----------|-------------------------------|-------|------|--------------------------|-----------------------------|
| 8 | | | | | TOLERANCE | | | | |
| 7 | POSITION PLATE | PBS STRIP | 1 | NATURAL | UNLESS SPECIFIED | | | | |
| 6 | SPRING PLATE | PBS STRIP | 1 | NATURAL | WITHIN 1.5mm : ±0.1mm | A | | 初 版 | |
| 5 | CONTACT | COPPER STRIP | 2 | Ag PLATED | OVER 1.5mm : ±0.2mm | ISSUE | DATE | DESCRIPTIONS OF REVISION | APPD. |
| 4 | TERMINAL | COPPER STRIP | 8 | Ag PLATED | TITLE : VERTICAL SLIDE SWITCH | | | UNIT : mm | DRWG NO.: XZ-DR-SS23H25-001 |
| 3 | BASE | PHENOLIC RESIN | 1 | BLACK | MODEL: VS14-103222ZBZ-4 | | | SCALE: 2:5 | DWN. |
| 2 | FRAME | STEEL STRIP | 1 | Ni PLATED | 东莞市六钧电子五金有限公司 | | | | CHK'D |
| 1 | KNOB | PA9T/POM | 1 | BLACK | | | | | APPD. |
| NO. | PARTS | MATERIALS | Q'TY | FINISH | | | | | |