

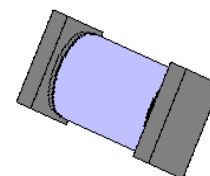
**VOIDLESS-HERMETICALLYSEALED  
SURFACE MOUNT ULTRA FAST  
RECOVERY GLASS RECTIFIERS**

**DESCRIPTION**

This "Ultrafast Recovery" rectifier diode series is military qualified to MIL-PRF-19500/585 and is ideal for high-reliability applications where a failure cannot be tolerated. These industry-recognized 1.5 to 2.0 Amp rated rectifiers for working peak reverse voltages from 200 to 1000 volts are hermetically sealed with voidless-glass construction using an internal "Category I" metallurgical bond. These devices are also available in axial-leaded packages for thru-hole mounting (see separate data sheet for 1N6620 thru 1N6625). Microsemi also offers numerous other rectifier products to meet higher and lower current ratings with various recovery time speed requirements including standard, fast and ultrafast device types in both through-hole and surface mount packages.

**IMPORTANT:** For the most current data, consult MICROSEMI's website: <http://www.microsemi.com>

**APPEARANCE**



**Package "A"  
or D-5A**

**FEATURES**

- Surface mount series equivalent to the JEDEC registered 1N6620 to 1N6625 series
- Voidless hermetically sealed glass package
- Extremely robust construction
- Triple-layer passivation
- Internal "Category I" Metallurgical bonds
- JAN, JANTX, and JANTXV available per MIL-PRF-19500/585
- Further options for screening in accordance with MIL-PRF-19500 for JANS by using a "SP" prefix, e.g. SP6620US, SP6624US, etc.
- Axial-leaded equivalents also available (see separate data sheet for 1N6620 thru 1N6625)

**MAXIMUM RATINGS**

- Junction Temperature: -65°C to +150°C
- Storage Temperature: -65°C to +175°C
- Peak Forward Surge Current @ 25°C: 20 Amps (except 1N6625 which is 15 Amps)  
Note: Test pulse = 8.3 ms, half-sine wave.
- Average Rectified Forward Current ( $I_O$ ) at  $T_{EC}=+110^{\circ}\text{C}$ :  
1N6620 thru 1N6622: 2.0 Amps  
1N6623 thru 1N6625: 1.5 Amps  
(Derate linearly at 1.5%/°C for  $T_{EC} > +110^{\circ}\text{C}$ )
- Average Rectified Forward Current ( $I_O$ ) at  $T_A=25^{\circ}\text{C}$ :  
1N6620 thru 1N6622: 1.2 Amps  
1N6623 thru 1N6625: 1.0 Amp  
(Derate linearly at 0.67%/°C for  $T_A > +25^{\circ}\text{C}$ . This  $I_O$  rating is typical for PC boards where thermal resistance from mounting point to ambient is sufficiently controlled where  $T_{J(max)}$  is not exceeded.)
- Thermal Resistance junction to endcap ( $R_{\theta JEC}$ ): 13°C/W
- Capacitance at  $V_R=10\text{ V}$ : 10 pF
- Solder temperature: 260°C for 10 s (maximum)

**APPLICATIONS / BENEFITS**

- Ultrafast recovery rectifier series 200 to 1000 V
- Military and other high-reliability applications
- Switching power supplies or other applications requiring extremely fast switching & low forward loss
- High forward surge current capability
- Low thermal resistance
- Controlled avalanche with peak reverse power capability
- Inherently radiation hard as described in Microsemi MicroNote 050

**MECHANICAL AND PACKAGING**

- CASE: Hermetically sealed voidless hard glass with Tungsten slugs
- TERMINATIONS: End caps are Copper with Tin/Lead (Sn/Pb) finish. Note: Previous inventory had solid Silver end caps with Tin/Lead plating.
- MARKING: Cathode band only
- POLARITY: Cathode indicated by band
- Tape & Reel option: Standard per EIA-481-B
- Weight: 193 mg
- See package dimensions and recommended pad layout on last page

**ELECTRICAL CHARACTERISTICS @ 25°C**

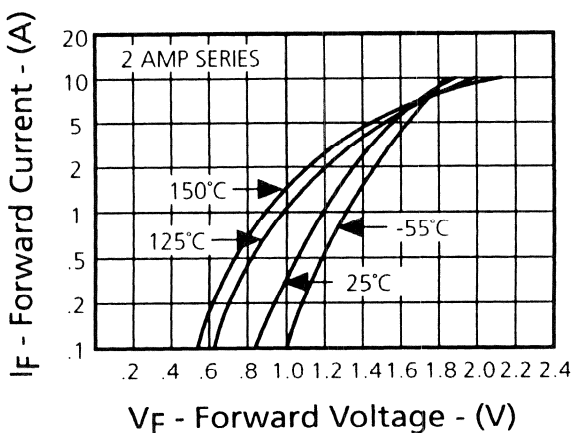
TYPE NUMBER	MINIMUM BREAK- DOWN VOLTAGE $V_R$ $I_R = 50\mu A$	MAXIMUM FORWARD VOLTAGE $V_F @ I_F$		WORKING PEAK REVERSE VOLTAGE $V_{RWM}$	MAXIMUM REVERSE CURRENT $I_R @$ $V_{RWM}$		MAXIMUM REVERSE RECOVERY TIME (LOW CURRENT)  $t_{rr}$ Note 1	MAXIMUM REVERSE RECOVERY TIME (HIGH CURRENT)  $t_{rr}$ Note 2	PEAK RECOVERY CURRENT  $I_{RM} (rec)$ $I_F = 2A,$ $100A/\mu s$ Note 2	FORWARD RECOVERY VOLTAGE  $V_{FRM} Max$ $I_F = 0.5A$ $t_{fr} = 12ns$
					$T_A = 25^{\circ}C$	$T_A = 150^{\circ}C$				
					$\mu A$	$\mu A$				
	V	V @ A	V @ A	V	$\mu A$	$\mu A$	ns	ns	A	V
1N6620	220	1.40V @ 1.2A	1.60V @ 2.0A	200	0.5	150	30	45	3.5	12
1N6621	440	1.40V @ 1.2A	1.60V @ 2.0A	400	0.5	150	30	45	3.5	12
1N6622	660	1.40V @ 1.2A	1.60V @ 2.0A	600	0.5	150	30	45	3.5	12
1N6623	880	1.55V @ 1.0A	1.80V @ 1.5A	800	0.5	150	50	60	4.2	18
1N6624	990	1.55V @ 1.0A	1.80V @ 1.5A	900	0.5	150	50	60	4.2	18
1N6625	1100	1.75V @ 1.0A	1.95V @ 1.5A	1000	1.0	200	60	80	5.0	30

NOTE 1: Low Current Reverse Recovery Time Test Conditions:  $I_F = 0.5A$ ,  $I_{RM} = 1.0A$ ,  $I_{R(REC)} = 0.25A$  per MIL-STD-750, Method 4031, Condition B.

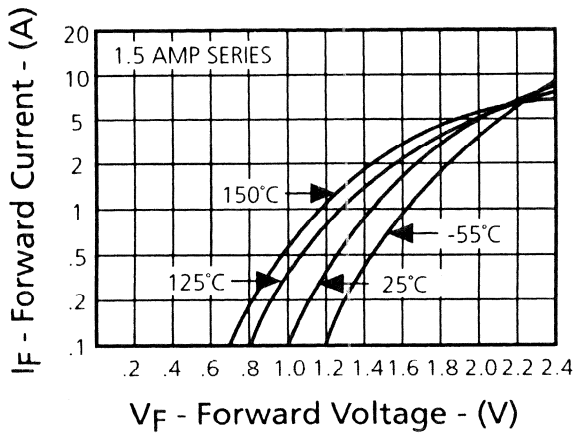
NOTE 2: High Current Reverse Recovery Time Test Conditions:  $I_F = 2A$ ,  $di/dt = 100 A/\mu s$  MIL-STD-750, Method 4031, Condition D.

**SYMBOLS & DEFINITIONS**

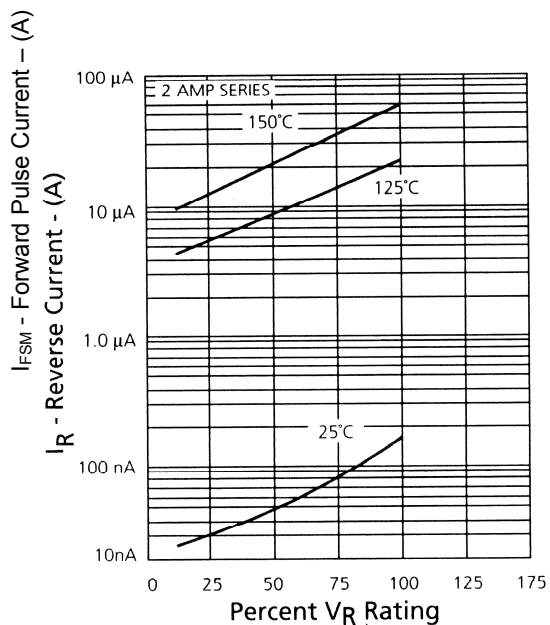
Symbol	Definition
$V_{BR}$	Minimum Breakdown Voltage: The minimum voltage the device will exhibit at a specified current.
$V_{RWM}$	Working Peak Reverse Voltage: The maximum peak voltage that can be applied over the operating temperature range.
$V_F$	Maximum Forward Voltage: The maximum forward voltage the device will exhibit at a specified current.
$I_R$	Maximum Reverse Current: The maximum reverse (leakage) current that will flow at the specified voltage and temperature.
C	Capacitance: The capacitance of the TVS as defined @ 0 volts at a frequency of 1 MHz and stated in picofarads.
$t_{rr}$	Reverse Recovery Time: The time interval between the instant the current passes through zero when changing from the forward direction to the reverse direction and a specified recovery decay point after a peak reverse current is reached.

**CHARTS AND GRAPHS**


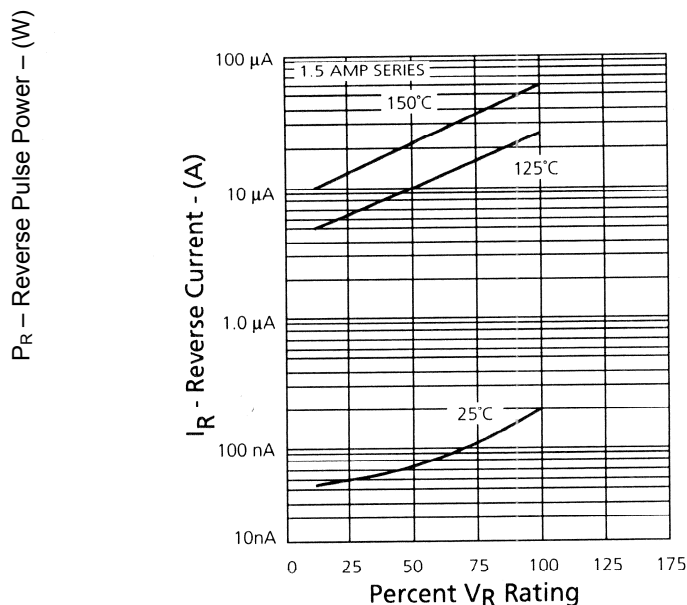
**FIGURE 1**  
Typical Forward Current  
vs  
Forward Voltage



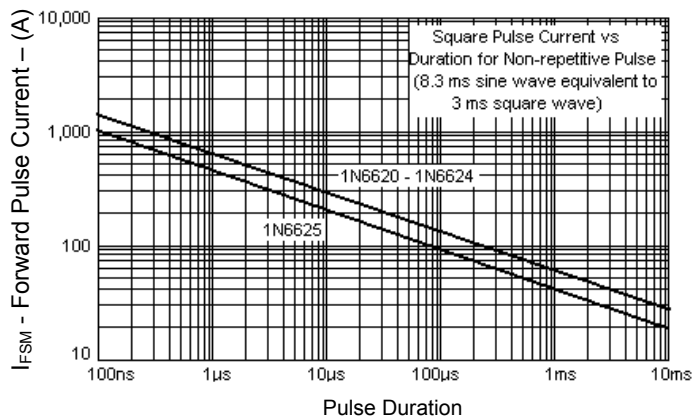
**FIGURE 2**  
Typical Forward Current  
vs  
Forward Voltage



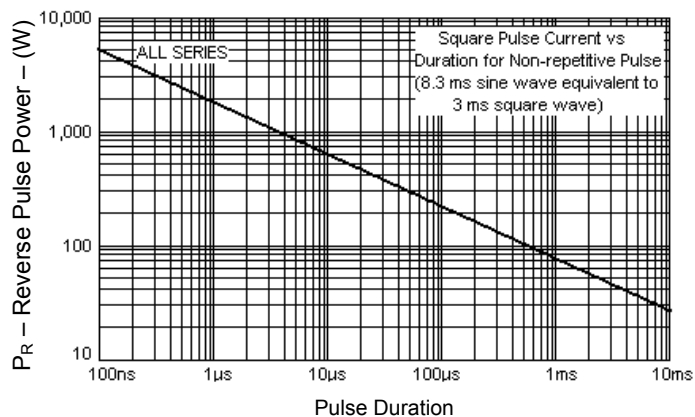
**FIGURE 3**  
Typical Reverse Current vs.  
Applied Reverse Voltage



**FIGURE 4**  
Typical Reverse Current vs.  
Applied Reverse Voltage

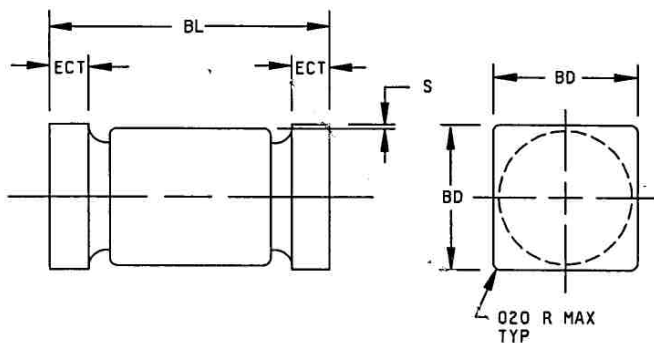


**FIGURE 5**  
Forward Pulse Current vs.  
Pulse Duration



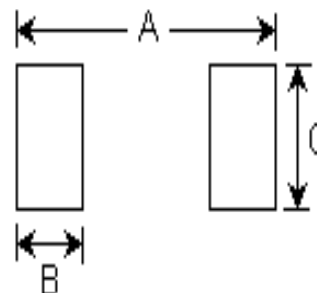
**FIGURE 6**  
Reverse Pulse Power vs.  
Pulse Duration

PACKAGE DIMENSIONS



NOTE: This Package Outline has also previously been identified as "D-5A"

	INCHES		mm	
	MIN	MAX	MIN	MAX
<b>BD</b>	.097	.103	2.46	2.62
<b>BL</b>	.185	.200	4.70	5.08
<b>ECT</b>	.019	.028	0.48	0.71
<b>S</b>	.003	---	0.08	---



PAD LAYOUT

	INCHES	mm
<b>A</b>	0.246	6.25
<b>B</b>	0.067	1.70
<b>C</b>	0.105	2.67
Note: If mounting requires adhesive separate from the solder, an additional 0.060 inch diameter contact may be placed in the center between the pads as an optional spot for cement.		