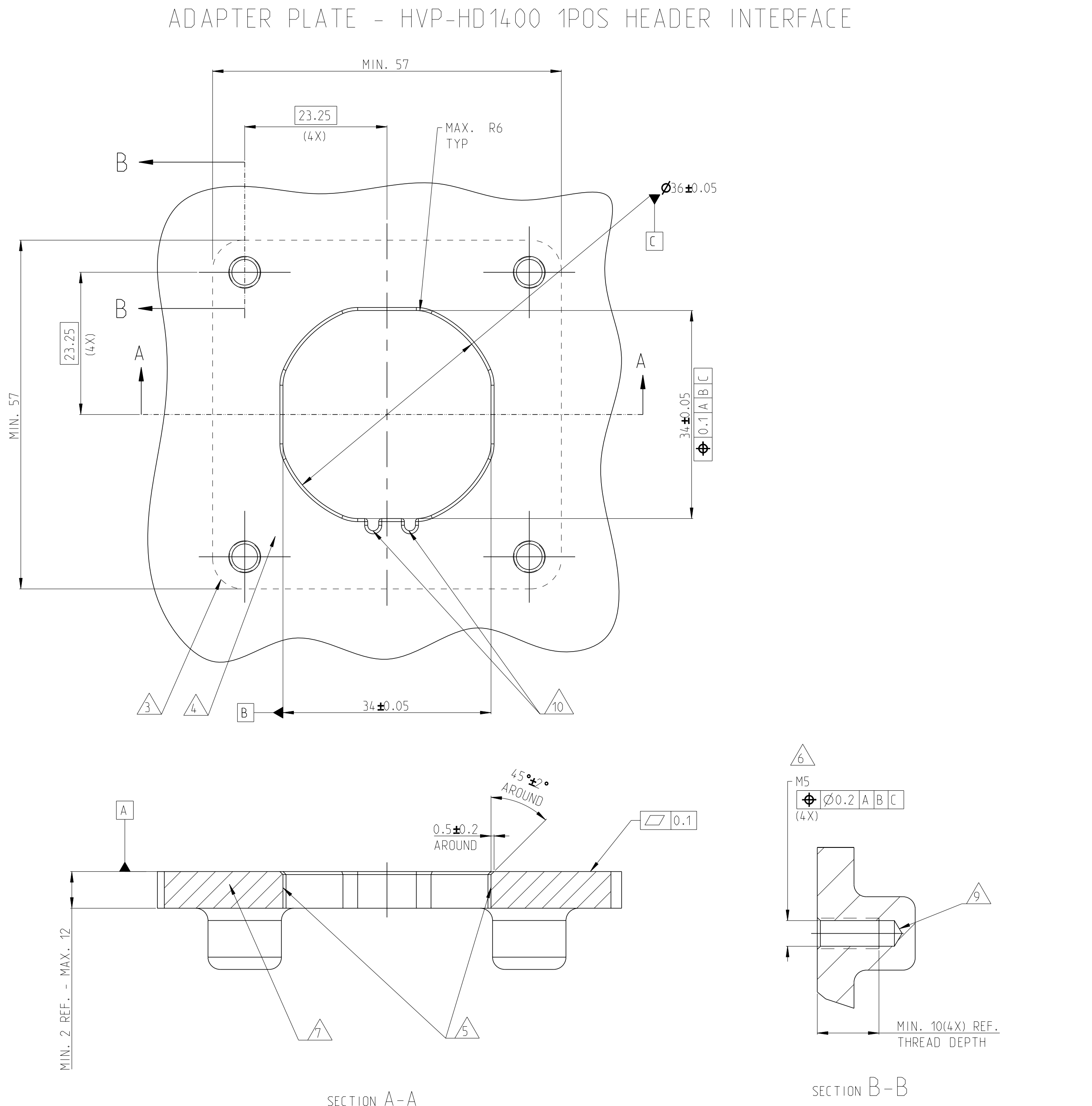
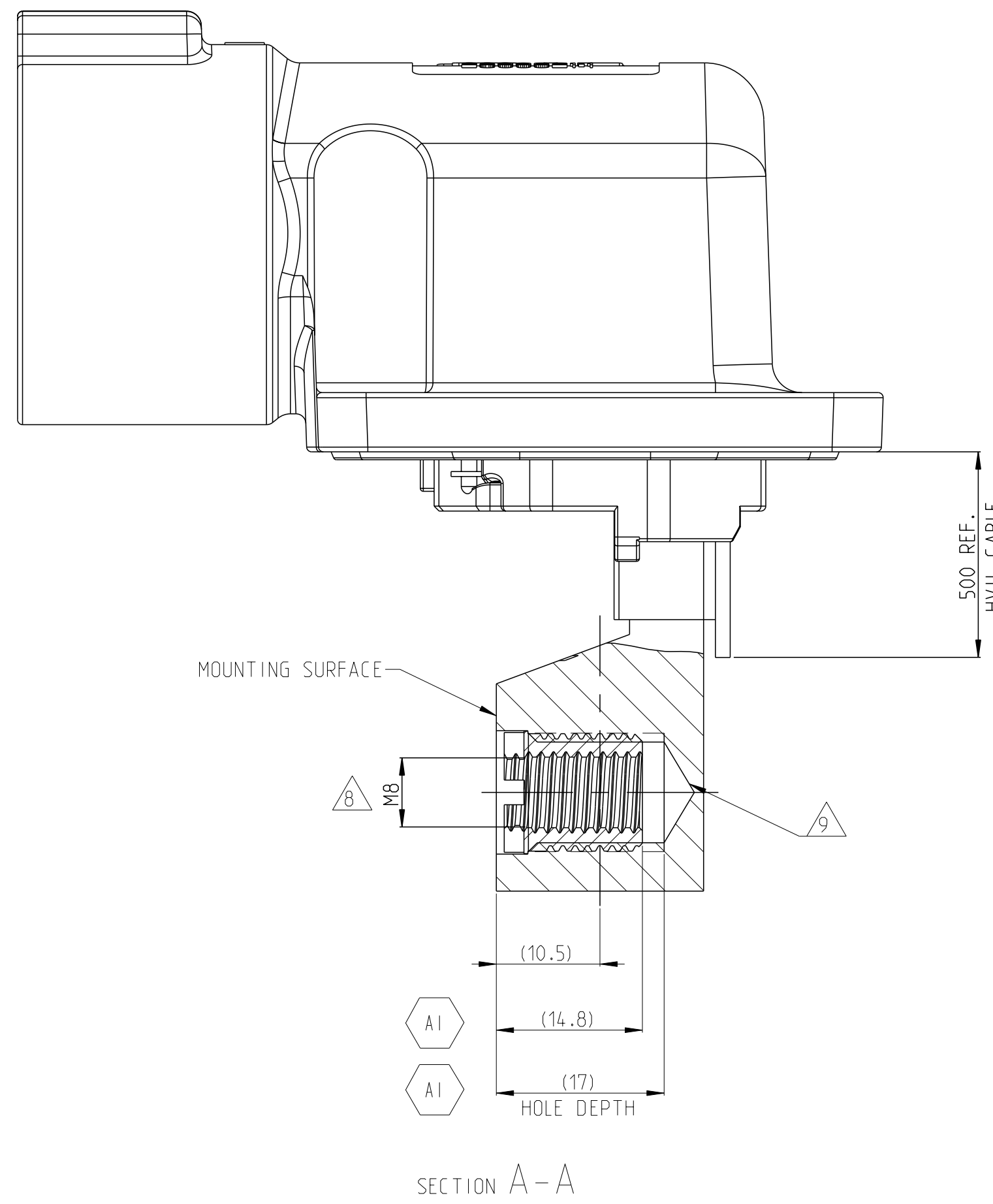
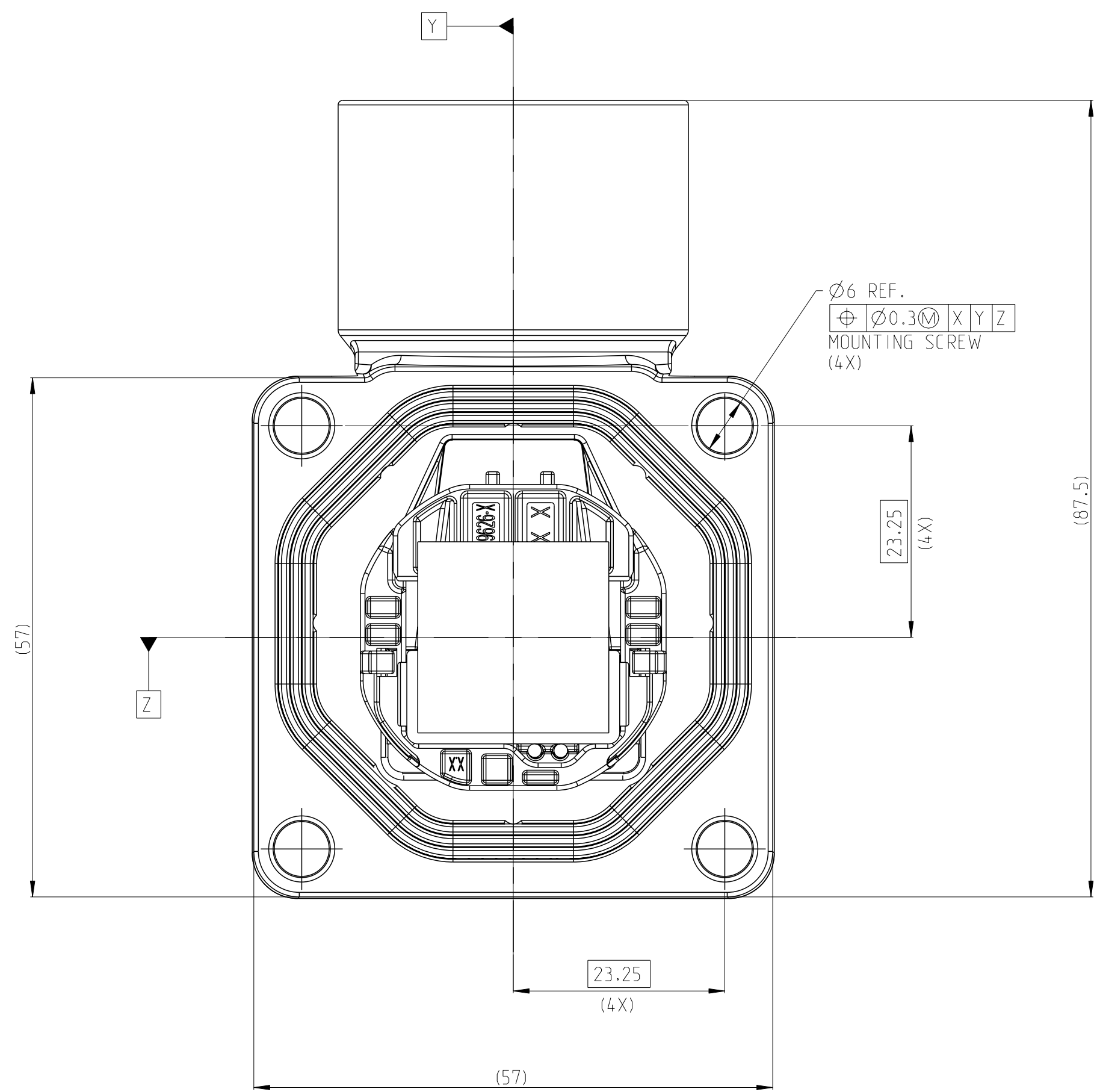
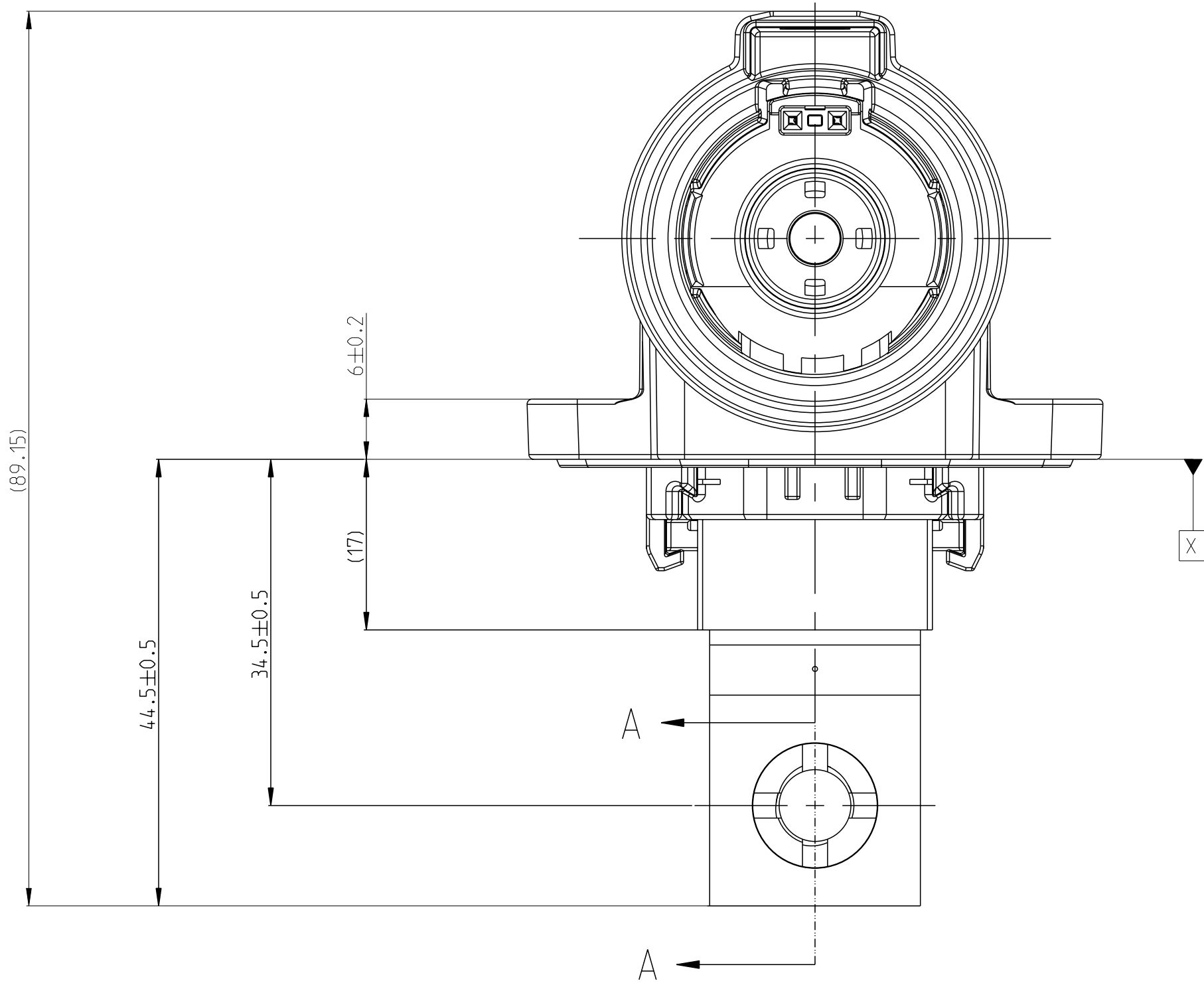
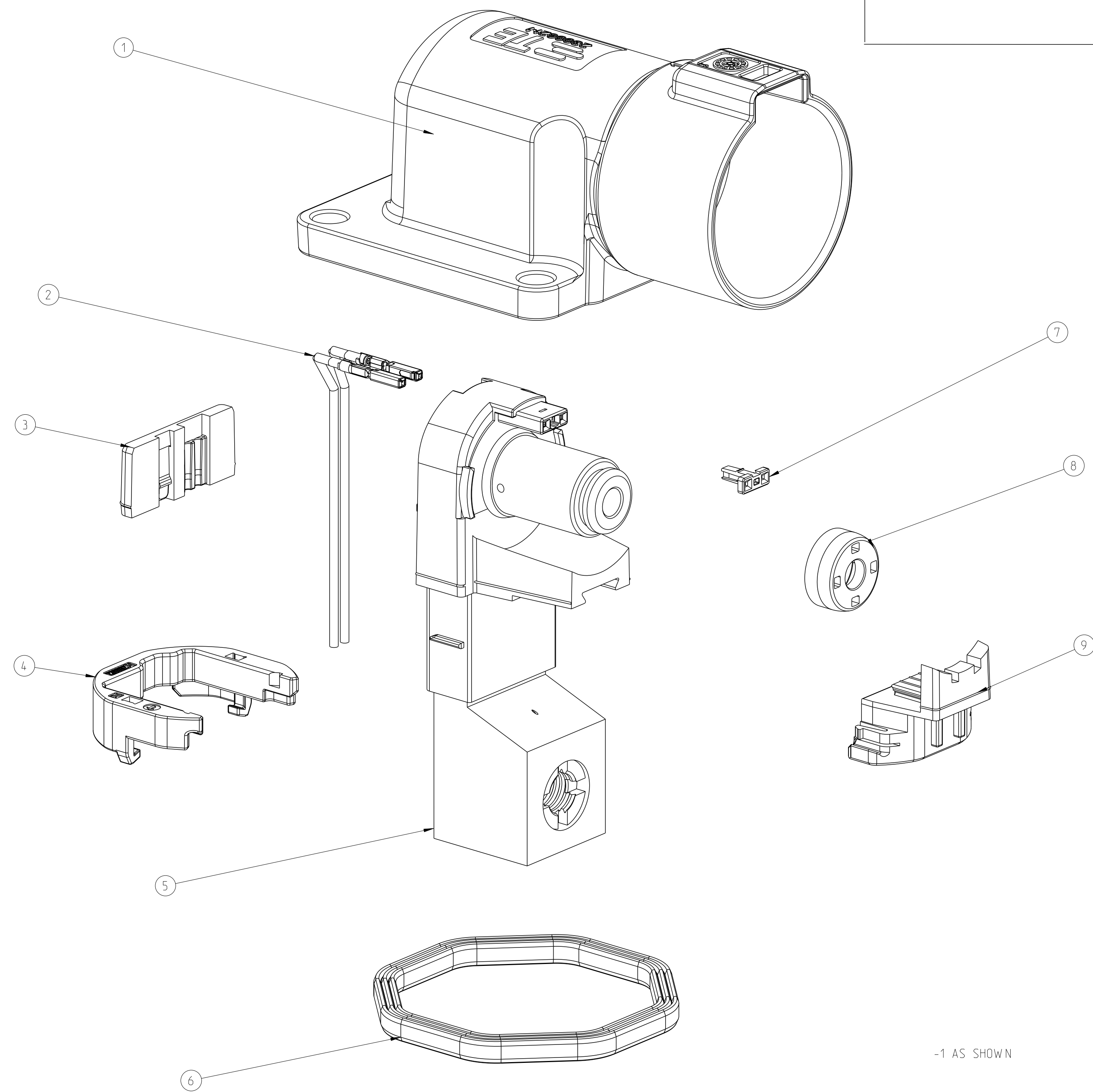


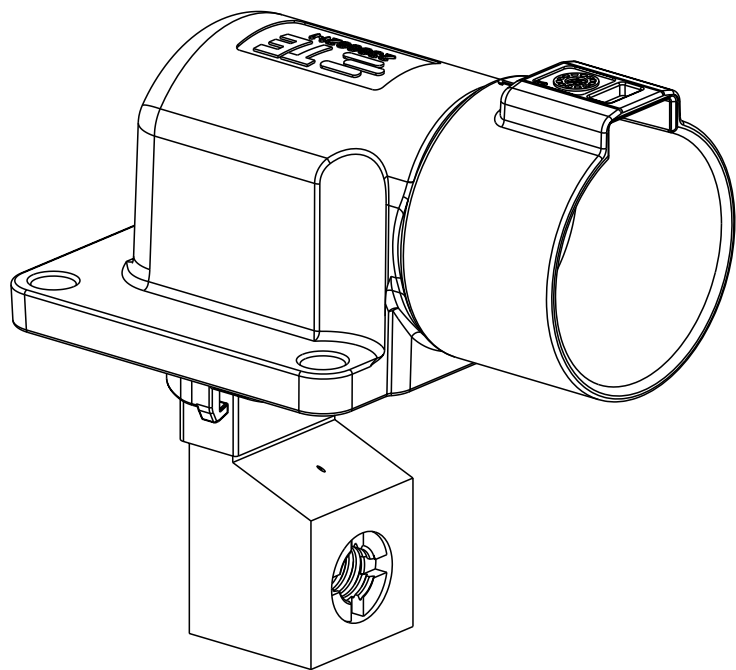
REVISIONS					
P.	LV.	DESCRIPTION	DATE	BY	APPD.
A		INITIAL RELEASE	29DEC2021	S.T	I.Y
A1		ECR-22-136442	18APR2022	S.T	Z.Z



1-2399609-3	M	1POS,PIN DIA 14.0 HDR ASSY,90DEG	CODE HOUSING FOLLOW 2399609-1	M	PA66-GF	AQUA RED	(315)	1	9
1-2399609-2	L	1POS,PIN DIA 14.0 HDR ASSY,90DEG	CODE HOUSING FOLLOW 2399609-1	L	PA66-GF	AQUA BROWN	(315)	1	9
1-2399609-1	K	1POS,PIN DIA 14.0 HDR ASSY,90DEG	CODE HOUSING FOLLOW 2399609-1	K	PA66-GF	AQUA GREEN	(315)	1	9
2399609-9	J	1POS,PIN DIA 14.0 HDR ASSY,90DEG	CODE HOUSING FOLLOW 2399609-1	J	PA66-GF	ORANGE	(315)	1	9
2399609-8	H	1POS,PIN DIA 14.0 HDR ASSY,90DEG	CODE HOUSING FOLLOW 2399609-1	H	PA66-GF	YELLOW	(315)	1	9
2399609-7	G	1POS,PIN DIA 14.0 HDR ASSY,90DEG	CODE HOUSING FOLLOW 2399609-1	G	PA66-GF	RED	(315)	1	9
2399609-6	F	1POS,PIN DIA 14.0 HDR ASSY,90DEG	CODE HOUSING FOLLOW 2399609-1	F	PA66-GF	BROWN	(315)	1	9
2399609-5	E	1POS,PIN DIA 14.0 HDR ASSY,90DEG	CODE HOUSING FOLLOW 2399609-1	E	PA66-GF	GREEN	(315)	1	9
2399609-4	D	1POS,PIN DIA 14.0 HDR ASSY,90DEG	CODE HOUSING FOLLOW 2399609-1	D	PA66-GF	PURPLE	(315)	1	9
2399609-3	C	1POS,PIN DIA 14.0 HDR ASSY,90DEG	CODE HOUSING FOLLOW 2399609-1	C	PA66-GF	BLUE	(315)	1	9
2399609-2	B	1POS,PIN DIA 14.0 HDR ASSY,90DEG	CODE HOUSING FOLLOW 2399609-1	B	PA66-GF	NATURE	(315)	1	9
2399609-1	A	1POS,PIN DIA 14.0 HDR ASSY,90DEG	CODE HOUSING FOLLOW 2399609-1	A	PA66-GF	BLACK	(315)	1	9
TE-ASSY-NO	CODE	DESCRIPTION	DESCRIPTION	CODE	MATERIAL	SURFACE COLOR	WEIGHT (g)	QTY	ITEM



1. MATING CONNECTOR REFER TO DRAWING 2400957
- △ CODING VARIANT
- △ FREE SPACE FOR HEADER
- △ SEALING AREA AND BURR, TOOL PARTING, SHRINKAGE, CAVITIES AND GATE MARKS PERMITTED. SURFACE ROUGHNESS: Ra≤1.6
- △ DRAFT ANGLE UP TO 0.5° PERMITTED
- △ MOUNTING SCREW M5, SCREW TYPE UP TO MANUFACTURER, DRILL HOLE DESIGN ACCORDING TO SCREW TYPE
- △ MATERIAL: CORROSION RESISTANT, ELECTROCONDUCTIVE
- △ SCREW M8 FOR BUSBAR CONNECTION
- △ ALL THREAD HOLES ARE BLIND HOLES
- △ INTERFACE PANEL CODE SEE SHEET 5

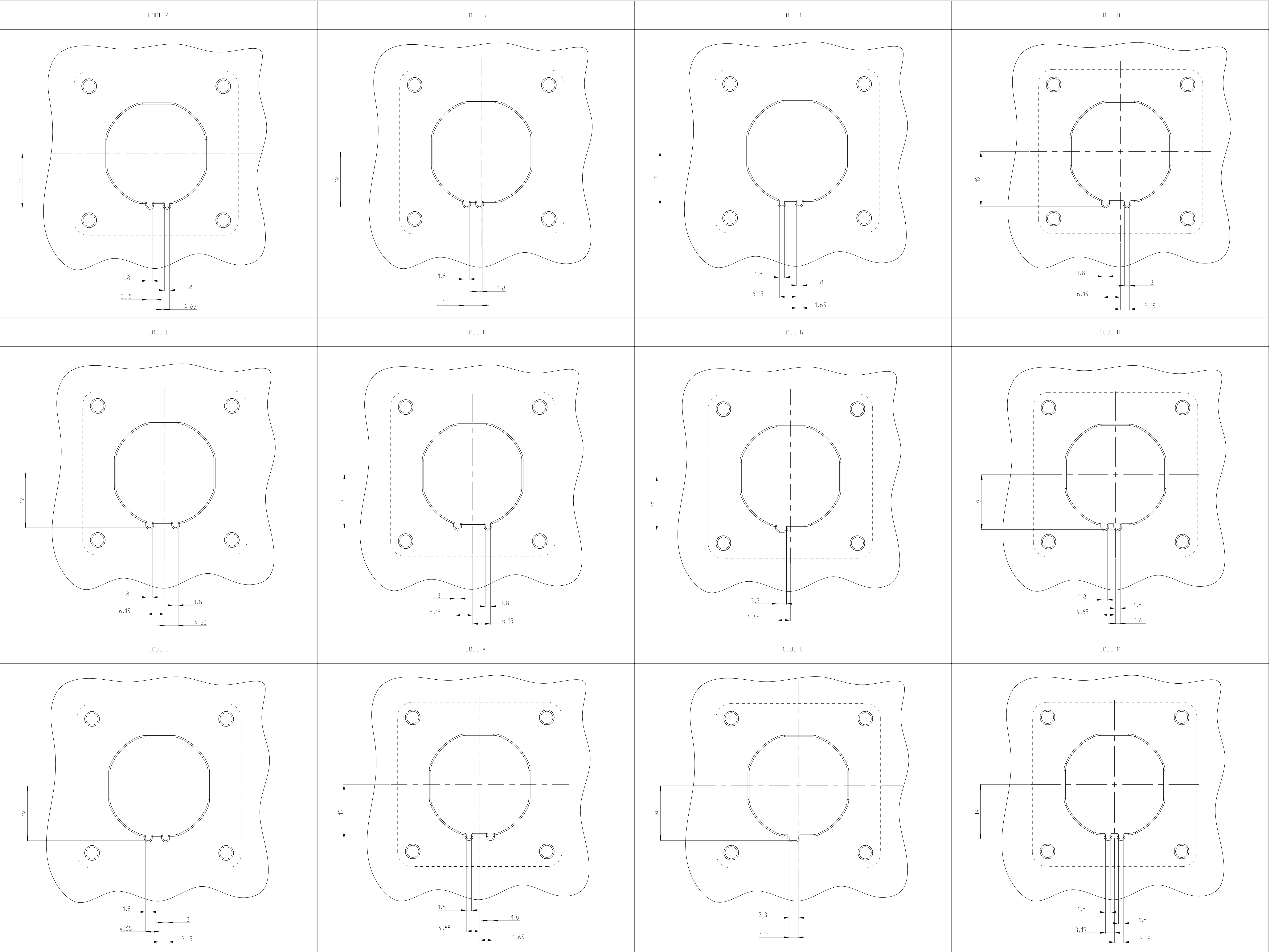


SCALE 1:1

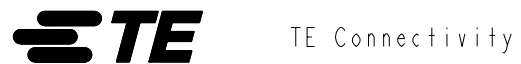
THIS DRAWING IS A CONTROLLED DOCUMENT.				REV. 3	TAN	29DEC2021
DIMENSIONS: (mm)				CHK	J.L.L.	29DEC2021
TOLERANCES UNLESS OTHERWISE SPECIFIED				APPV	J.VIN	29DEC2021
1. DIMENSIONS ±0.5				PRODUCT SPEC		
2. DIMENSIONS ±0.1				108-160407		
3. DIMENSIONS ±0.05				APPLICATION SPEC		
4. DIMENSIONS ±0.001				114-160222		
5. DIMENSIONS ±0.0001				WEIGHT		
6. DIMENSIONS ±0.0001				SEE TABLE		
MATERIAL SEE TABLE				CUSTOMER DRAWING		
SIZE CASE CODE DRAWING NO				RESTRICTED TO		
A 0 00779 C=2399609				SCALE 2:1 SHEET 1 OF 5 REV A1		

-1 AS SHOWN

REVISIONS				
P.	LYN	DESCRIPTION	DATE	BYN
-	-	SEE SHEET 1	-	-



THIS DRAWING IS A CONTROLLED DOCUMENT.				DRN S.TAN 29DEC2021
DIMENSIONS UNLESS OTHERWISE SPECIFIED.				CHK J.L.L. 29DEC2021
DRAWING STYLE				APV J.VIN 29DEC2021
DIMENSIONS UNLESS OTHERWISE SPECIFIED.				PRODUCT SPEC
DIMENSIONS UNLESS OTHERWISE SPECIFIED.				108-1604-07
DIMENSIONS UNLESS OTHERWISE SPECIFIED.				APPLICATION SPEC
DIMENSIONS UNLESS OTHERWISE SPECIFIED.				114-160222
DIMENSIONS UNLESS OTHERWISE SPECIFIED.				WEIGHT
DIMENSIONS UNLESS OTHERWISE SPECIFIED.				SEE TABLE
DIMENSIONS UNLESS OTHERWISE SPECIFIED.				CUSTOMER DRAWING
DIMENSIONS UNLESS OTHERWISE SPECIFIED.				SCALE
DIMENSIONS UNLESS OTHERWISE SPECIFIED.				2:1
DIMENSIONS UNLESS OTHERWISE SPECIFIED.				SHEET
DIMENSIONS UNLESS OTHERWISE SPECIFIED.				5
DIMENSIONS UNLESS OTHERWISE SPECIFIED.				OF
DIMENSIONS UNLESS OTHERWISE SPECIFIED.				5
DIMENSIONS UNLESS OTHERWISE SPECIFIED.				REV
DIMENSIONS UNLESS OTHERWISE SPECIFIED.				A1



TE Connectivity

NAME
1POS.PIN DIA 14.0.HDR ASSY.90DEG
HVP-HD1400

SIZE
A0

CASE CODE
00779

DRAWING NO
C=2399609

RESTRICTED TO

-

REV

A1

Mouser Electronics

Authorized Distributor

Click to View Pricing, Inventory, Delivery & Lifecycle Information:

[TE Connectivity:](#)

[2399609-3](#)