

ROHS

| REVISIONS | | | | | |
|-----------|---------|----------|-----------------|------------|--------|
| REV. | ECN NO. | LOCATION | DESCRIPTION | DATE | DESIGN |
| A0 | N/A | | INITIAL RELEASE | 2024.09.30 | |
| | | | | | |

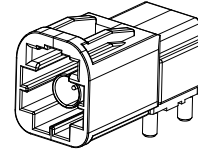
Specifications(规格):

- 1.Impedance(特性阻抗) : 50Ω;
- 2.Frequency (工作频率) : DC~9GHz;
- 3.VSWR:1.60 Max.@6GHz
- 4.Insulation resistance(绝缘阻抗) : ≥100MΩ;
- 5.Dielectric withstand voltage (介质耐电压) : 800V AC;
- 6.Mating cycles (耐久性) : ≥25 cycles;
- 7.Engagement force(啮合力) : ≤15N;
- 8.Retention force latch(保持力) : ≥110N;
- 9.Temperature range(使用温度): -40℃~+105℃;

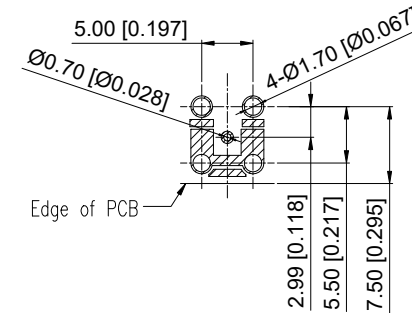
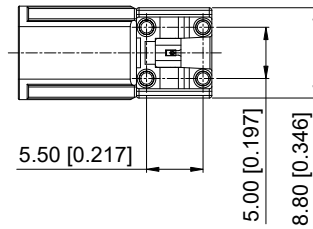
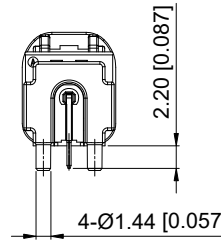
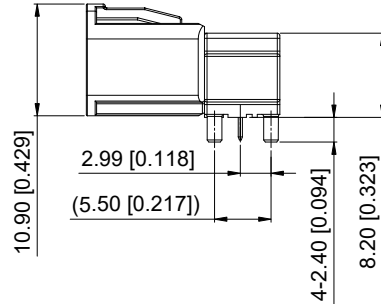
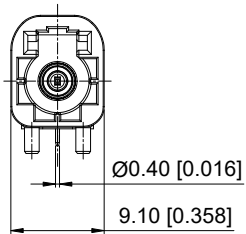
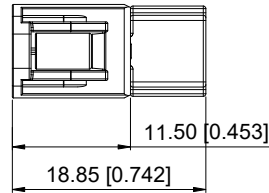
PART NO.:

XM0RWM13-NL35-X

Code: A~Z



3D View



Recommended P.C.B Layout

| ANGULAR | ±5° |
|---------|-------|
| X. | ±0.50 |
| X.x | ±0.30 |
| X.xx | ±0.20 |
| X.xxx | ±0.10 |

UNSPECIFIED TOLERANCES

MODEL TYPE:
MINI FAKRA R/A Male Connector

PART NO.:
XM0RWM13-NL35-X

DWG NO.:
X-XM0RWM13-NL35-X

| SCALE | PAGE | REVISION |
|-------|------|----------|
| N/A | 1/2 | A0 |

| | | | | | |
|---|------------------|--------------|------------------|------|------|
| 5 | Dielectric | LCP | | 1 PC | |
| 4 | Body | Zinc Alloy | Tin PLATED | 1 PC | |
| 3 | Outer Conductor1 | Copper Alloy | Tin PLATED | 1 PC | |
| 2 | Center Conductor | Copper Alloy | Gold PLATED | 1 PC | |
| 1 | Housing | PA4T | | 1 PC | |
| NO. | SPEC. | MATERIAL | FINISH (Contact) | Q'TY | Note |
| www.helloxkb.com www.helloxkb.cn www.xk-dg.cn | | | | | |



XKB INDUSTRIAL PRECISION CO.,LIMITED

1

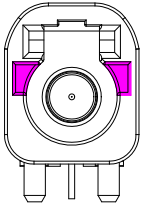
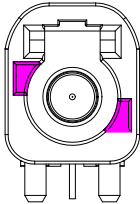
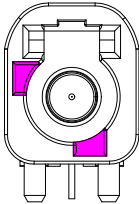
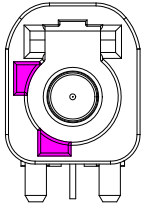
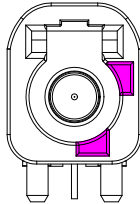
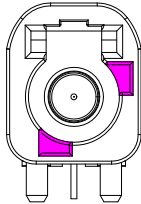
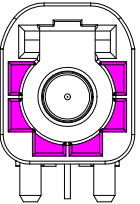
2

3

4

| REVISIONS | | | | | |
|-----------|---------|----------|-----------------|------------|--------|
| REV. | ECN NO. | LOCATION | DESCRIPTION | DATE | DESIGN |
| A0 | N/A | | INITIAL RELEASE | 2024.09.30 | |
| | | | | | |

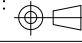
Code List:

| | | | | | | | |
|---------------|---|---|--|---|---|---|---|
| Colde |  |  |  |  |  |  |  |
| | A | B | C | D | E | F | Z |
| Color/RAL-No. | Black/9005 | White/9010 | Blue/5012 | Bordeaux/4004 | Green/6017 | Brown/8011 | Water Blue/5021 |
| PART NO. | XMORWM13-NL35-A | XMORWM13-NL35-B | XMORWM13-NL35-C | XMORWM13-NL35-D | XMORWM13-NL35-E | XMORWM13-NL35-F | XMORWM13-NL35-Z |

NOTE: ALL RIGHTS RESERVED,BANNED COPY!

| | |
|------------------------|-------|
| ANGLAR | ±5° |
| X. | ±0.40 |
| X.x | ±0.30 |
| X.xx | ±0.20 |
| X.xxx | ±0.15 |
| UNSPECIFIED TOLERANCES | |



| | | | | | |
|-----------------------|----|---|--|-------------|----------------|
| DESIGN | 希文 | VIEW:  | MODEL TYPE: MINI FAKRA R/A Male Connector | | |
| CHECKED | | UNIT: mm/in | PART NO.: XMORWM13-NL35-X | | |
| APPROVED | | SIZE: A4 | DWG NO.: X-XMORWM13-NL35-X | | |
| PRECISION CO.,LIMITED | | | SCALE N/A | PAGE 2/2 | REVISION A0 |

1

2

3

4