

RoHS

REVISIONS

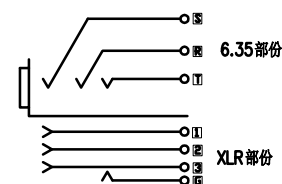
REV.	ECN NO.	DESCRIPTION
A1	2022/05/16	NEW DESIGN

NOTE:

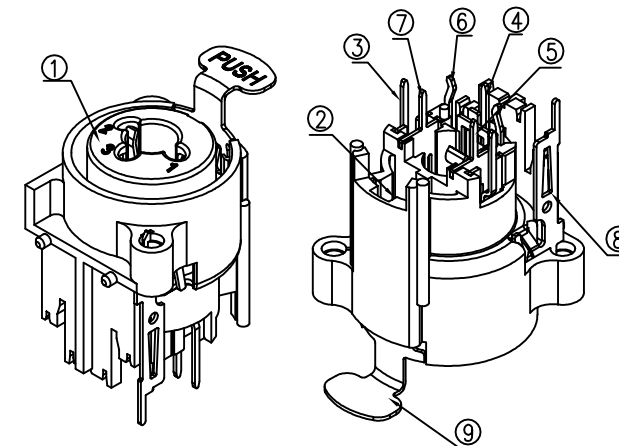
MAIN SPECIFICATION:

- Rated current: 50V AC, 3A
额定电流: 50V AC, 3A
- DIELECTRIC WITHSTAND VOLTAGE: 1500VAC
耐电压: 1500V MAX
- TEMPERATURE RANGE: -30 °C ~ 80 °C
使用温度: -30 °C ~ 80 °C
- CONTACT RESISTANCE: 10 MILLIONHM MAX
接触电阻: 10 MILLIONHM MAX
- INSULATION RESISTANCE: 1500 MEGOHMS MIN.
绝缘阻抗: 1500 MEGOHMS MIN.
- AFTER DURABILITY(1000CYCLES)
寿命 (1000次)

PCB layout(component-side)



Schematic



9	X3011-81-61N8	按钮 (PUSH)	65Mn t=0.6	1	镀镍 (Ni)	
8	X3011-46-21G6	接地针 (G)	QSn6.5-0.1 t=0.5	1	镀银 (Ag)	
7	X3011-44-21G6	右插针 (R)	QSn6.5-0.1 t=0.5	1	镀银 (Ag)	
6	X3011-45-21A1	中插针 (T)	QSn6.5-0.1 t=0.5	1	镀金 (Au)	
5	X3011-43-21G6	左插针 (S)	QSn6.5-0.1 t=0.5	1	镀银 (Ag)	
4	X3011-42-21A1	插针 (3#)	QSn6.5-0.1 t=0.5	1	镀金 (Au)	
3	X3011-41-21A1	插针 (1# 2#)	QSn6.5-0.1 t=0.5	2	镀金 (Au)	
2	X3011-31-61N8	弹片 (SPRING)	65Mn t=0.4	1	镀镍 (Ni)	
1	X3011-00-N3B	底座 (BASE)	PA66 UL 94HB	1	黑色 (BLACK)	
序号	料号	名称	材料	数量	镀层	备注

X.±0.20	X.°±8°
.X±0.15	.X°±5°
.XX±0.07	.XX°±3°
.XXX±0.05	.XXX°±1.5°
UNITS:	mm
THESE DRAWINGS AND SPECIFICATIONS JINJIA ELC AND SHALL NOT BE REPRODUCED, COPIED OR CUED IN ANY MANNER WITHOUT THE PRIOR WRITTEN CONSENT OF JINJIA	
D TYPE	CUSTOMER D 客户图

Customer P/N:		浙江创都电子科技有限公司			
Customer REV.:					
PART NO.: XLR-11P-N3B		TITLE: Combo ,立式带锁组合座			
APPD: Liu Ying		DWG NO: XLR-19ZP-7P			
CHKD: Wang Cheng					
DRAW: Hu ZhengTe			SCALE	SHEET	REV.
			1:1	1/1	A1