

## Straight Panel Jack Receptacle

- Extended contact and insulator
- 1/2" square flange

Captive contact:

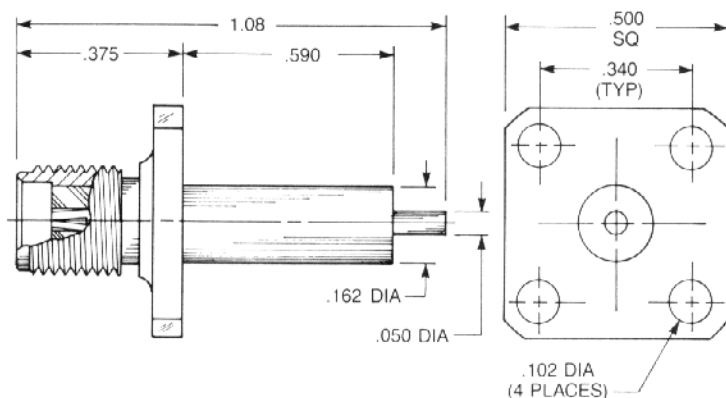
**9004-1113-000** (Gold plated)

**9004-9113-000** (Passivated)

Noncaptive contact:

**9004-1213-000** (Gold plated)

**9004-9213-000** (Passivated)



## Straight Panel Jack Receptacle

- Extended contact and insulator
- 2-hole flange

Captive contact:

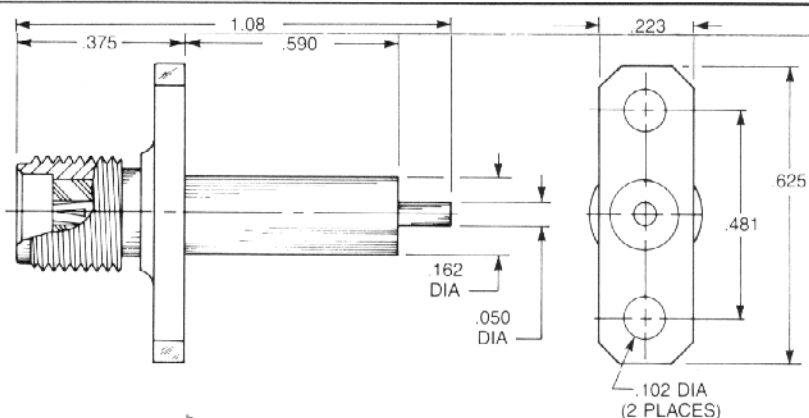
**9008-1113-000** (Gold plated)

**9008-9113-000** (Passivated)

Noncaptive contact:

**9008-1213-000** (Gold plated)

**9008-9213-000** (Passivated)



## Straight Panel Jack Receptacle

- Extended contact and insulator
- 3/8" square flange

Captive contact:

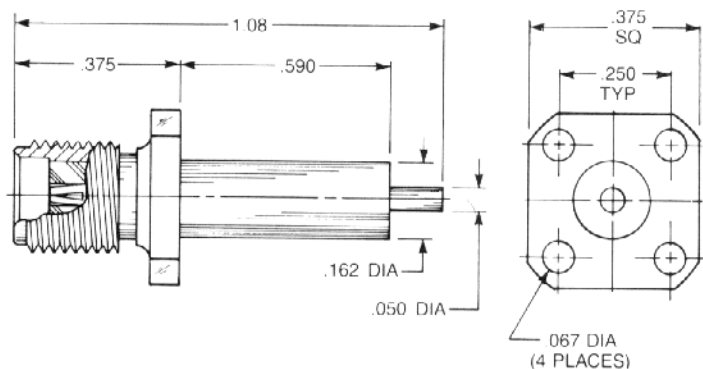
**9076-1113-000** (Gold plated)

**9076-9113-000** (Passivated)

Noncaptive contact:

**9076-1213-000** (Gold plated)

**9076-9213-000** (Passivated)



## Straight Panel Jack Receptacle

- Extended contact and insulator
- Rectangular flange

Captive contact:

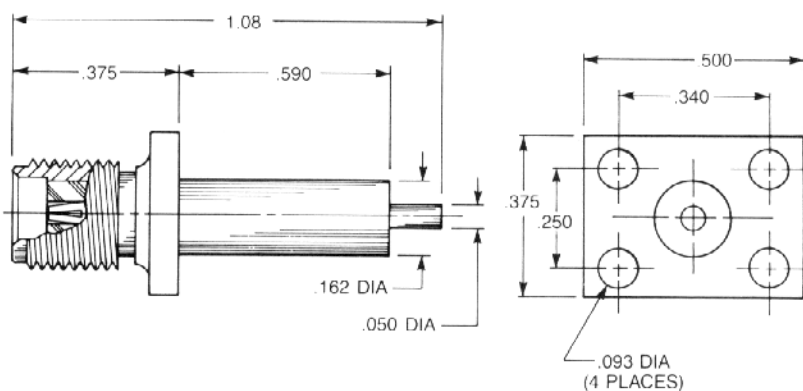
**9007-1113-000** (Gold plated)

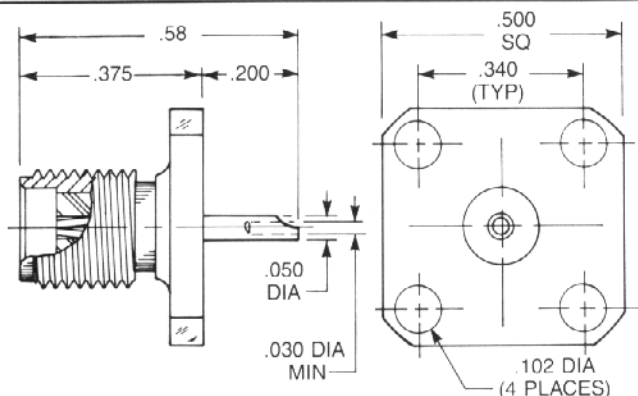
**9007-9113-000** (Passivated)

Noncaptive contact:

**9007-1213-000** (Gold plated)

**9007-9213-000** (Passivated)





## Straight Panel Jack Receptacle

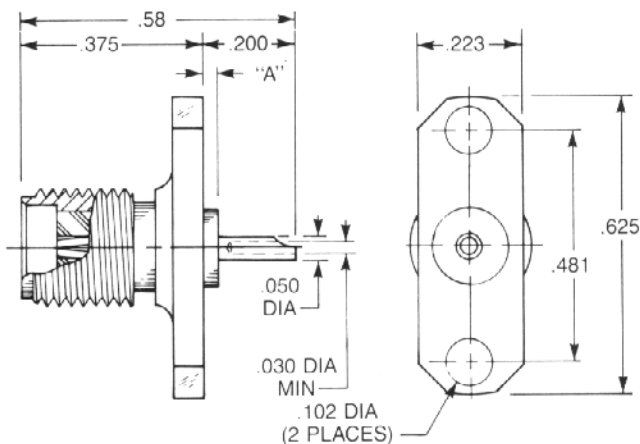
- Solder pot contact
- 1/2" square flange

Captive contact:

**9404-1113-000** (Gold plated)

**9404-9113-000** (Passivated)

QPL version available (M39012/60)



## Straight Panel Jack Receptacle

- Solder pot contact
- 2-hole flange

Captive contact (A = .030):

**9408-1113-000** (Gold plated)

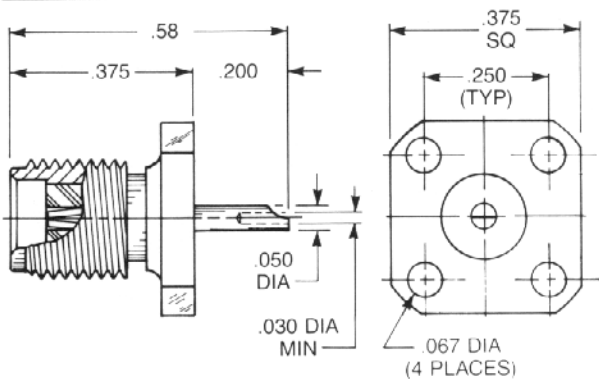
**9408-9113-000** (Passivated)

Captive contact (A = .000):

**9408-1113-002** (Gold plated)

**9408-9113-002** (Passivated)

QPL version available (M39012/60)



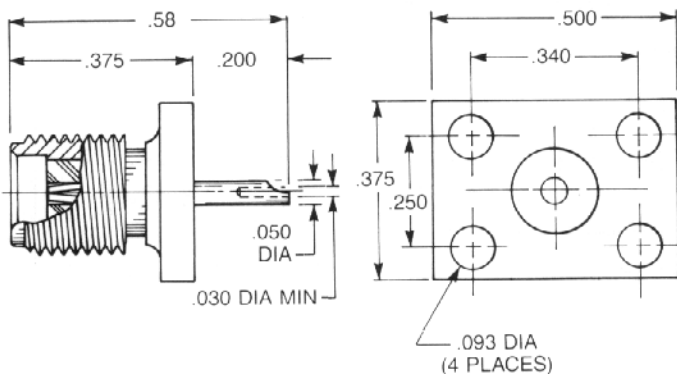
## Straight Panel Jack Receptacle

- Solder pot contact
- 3/8" square flange

Captive contact:

**9476-1113-000** (Gold plated)

**9476-9113-000** (Passivated)



## Straight Panel Jack Receptacle

- Solder pot contact
- Rectangular flange

Captive contact:

**9407-1113-000** (Gold plated)

**9407-9113-000** (Passivated)

## Straight Panel Jack Receptacle

- Tab contact
- 1/2" square flange

Captive contact:

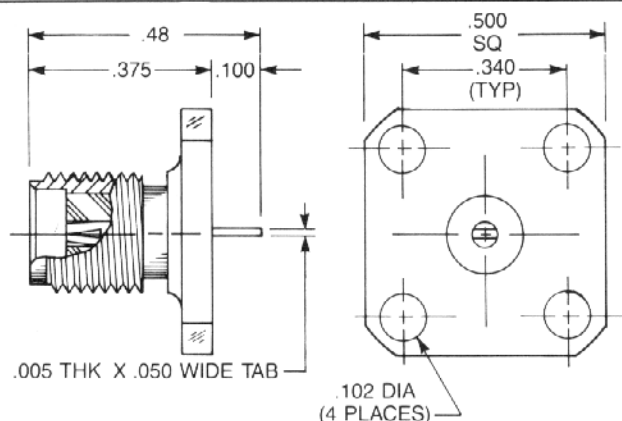
9104-1113-000 (Gold plated)

9104-9113-000 (Passivated)

Noncaptive contact:

9104-1213-000 (Gold plated)

9104-9213-000 (Passivated)



## Straight Panel Jack Receptacle

- Tab contact
- 2-hole flange

Captive contact:

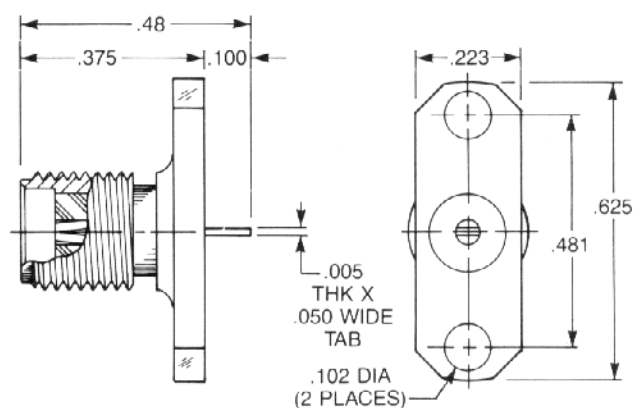
9108-1113-000 (Gold plated)

9108-9113-000 (Passivated)

Noncaptive contact:

9108-1213-000 (Gold plated)

9108-9213-000 (Passivated)



## Straight Panel Jack Receptacle

- Tab contact
- 3/8" square flange

Captive contact:

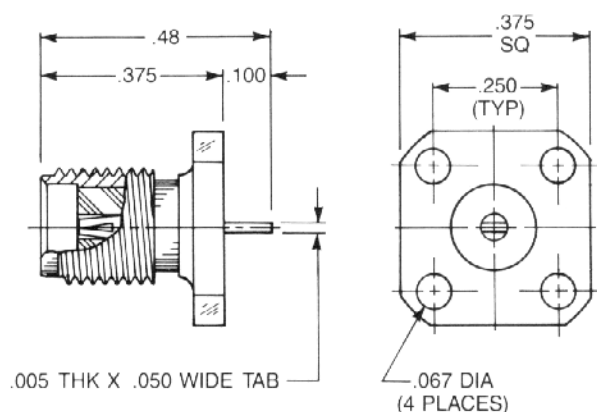
9176-1113-000 (Gold plated)

9176-9113-000 (Passivated)

Noncaptive contact:

9176-1213-000 (Gold plated)

9176-9213-000 (Passivated)



## Straight Panel Jack Receptacle

- Tab contact
- Rectangular flange

Captive contact:

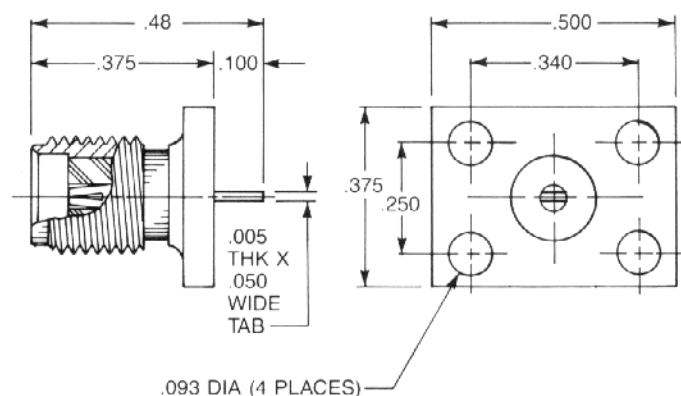
9107-1113-000 (Gold plated)

9107-9113-000 (Passivated)

Noncaptive contact:

9107-1213-000 (Gold plated)

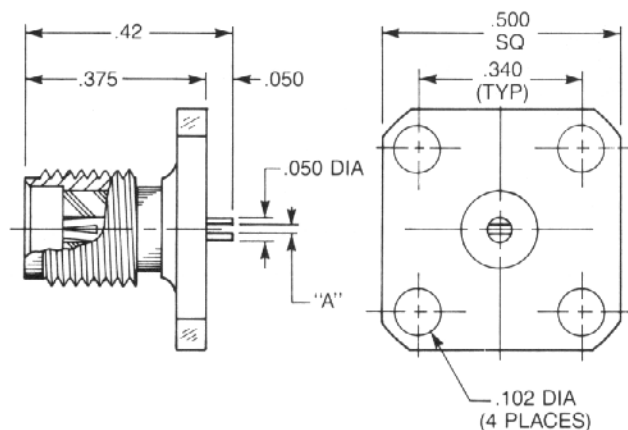
9107-9213-000 (Passivated)





## Straight Panel Jack Receptacle

- Slotted contact
- 1/2" square flange



### Dim. A Captive contact:

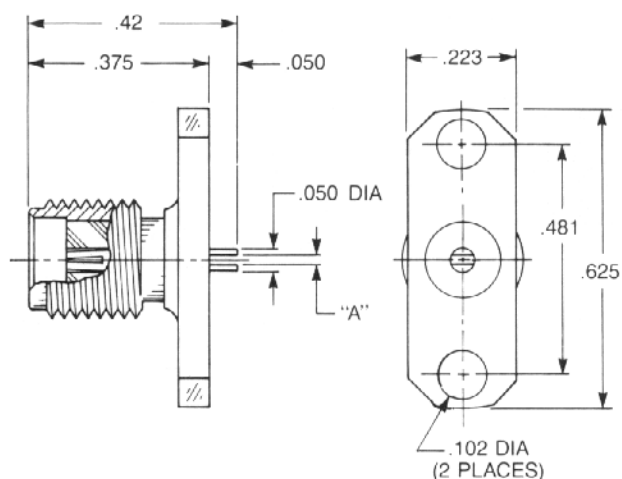
.012	<b>9204-1113-002</b>	(Gold plated)
	<b>9204-9113-002</b>	(Passivated)
.018	<b>9204-1113-001</b>	(Gold plated)
	<b>9204-9113-001</b>	(Passivated)
.025	<b>9204-1113-003</b>	(Gold plated)
	<b>9204-9113-003</b>	(Passivated)

### Noncaptive contact:

.012	<b>9204-1213-002</b>	(Gold plated)
	<b>9204-9213-002</b>	(Passivated)
.018	<b>9204-1213-001</b>	(Gold plated)
	<b>9204-9213-001</b>	(Passivated)
.025	<b>9204-1213-003</b>	(Gold plated)
	<b>9204-9213-003</b>	(Passivated)

## Straight Panel Jack Receptacle

- Slotted contact
- 2-hole flange



### Dim. A Captive contact:

.012	<b>9208-1113-000</b>	(Gold plated)
	<b>9208-9113-000</b>	(Passivated)
.018	<b>9208-1113-001</b>	(Gold plated)
	<b>9208-9113-001</b>	(Passivated)
.025	<b>9208-1113-002</b>	(Gold plated)
	<b>9208-9113-002</b>	(Passivated)

### Noncaptive contact:

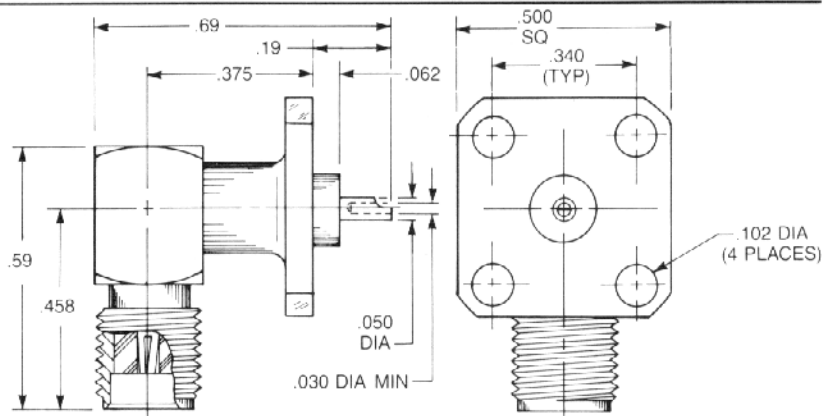
.012	<b>9208-1213-000</b>	(Gold plated)
	<b>9208-9213-000</b>	(Passivated)
.018	<b>9208-1213-001</b>	(Gold plated)
	<b>9208-9213-001</b>	(Passivated)
.025	<b>9208-1213-002</b>	(Gold plated)
	<b>9208-9213-002</b>	(Passivated)

## Right Angle Panel Jack Receptacle

- Solder pot contact
- 1/2" square flange

9424-1513-000 (Gold plated)

9424-9513-000 (Passivated)

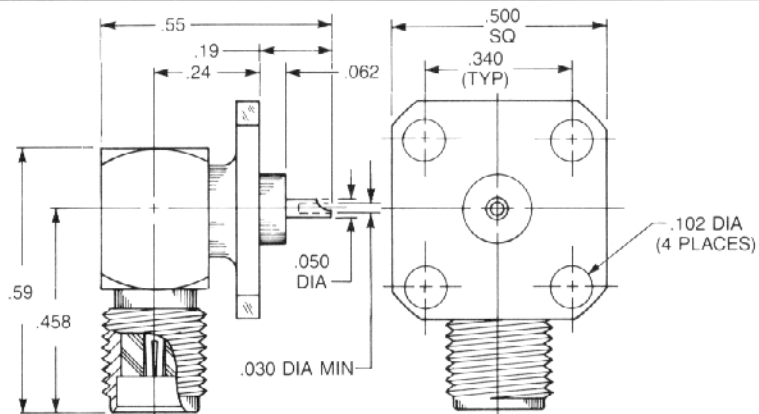


## Low Profile Right Angle Panel Jack Receptacle

- Solder pot contact
- 1/2" square flange

9425-1513-000 (Gold plated)

9425-9513-000 (Passivated)

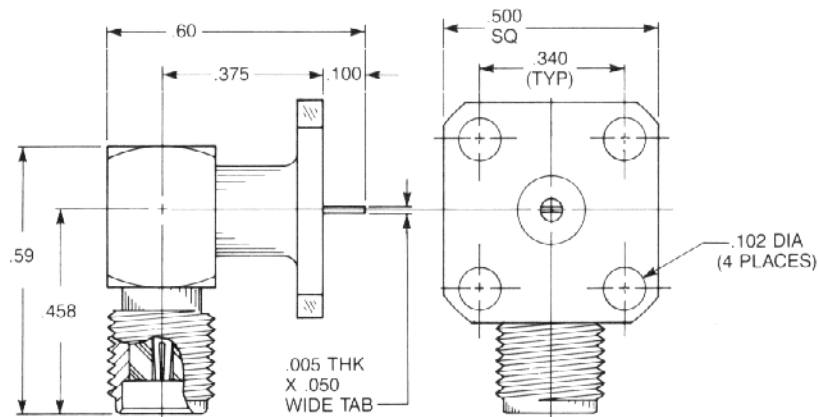


## Right Angle Panel Jack Receptacle

- Tab contact
- 1/2" hole flange

9124-1513-000 (Gold plated)

9124-9513-000 (Passivated)

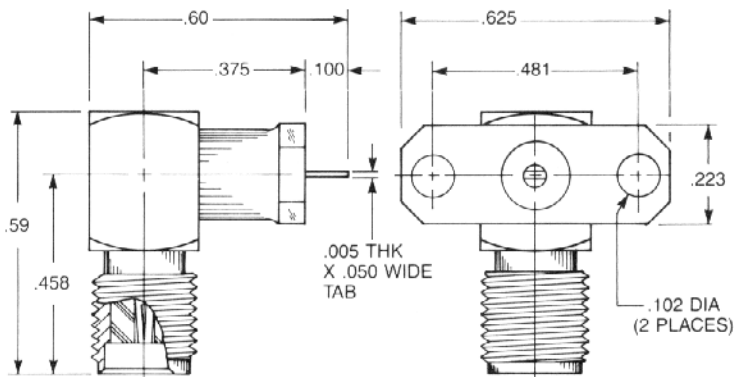


## Right Angle Panel Jack Receptacle

- Tab contact
- 2-hole flange

9126-1513-000 (Gold plated)

9126-9513-000 (Passivated)



# Mouser Electronics

Authorized Distributor

Click to View Pricing, Inventory, Delivery & Lifecycle Information:

Radial:

[9107-9113-000](#)