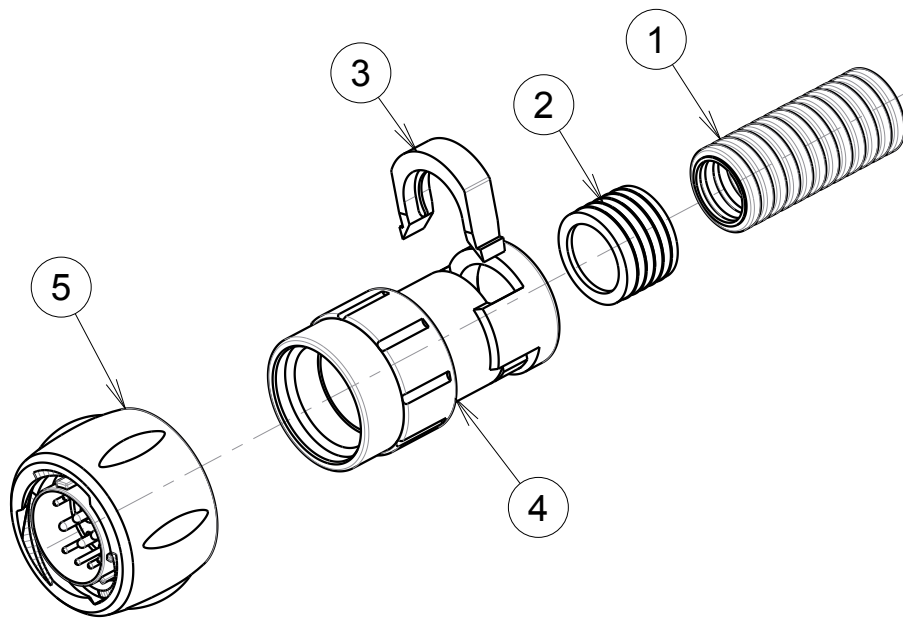


ASSEMBLED VIEW

P/N	CONNECTOR SIZE	FLEX SIZE CONDUIT (see note 4)	∅ A Maxi	∅ B±0.3	C± 0.6
UTS6FC12EXXP/S	12	NW12	30.1	24	61
UTS6FC14EXXP/S	14	NW12	35.1	26.5	61



SOURIAU shall not be liable for any non-conformity or damage due to a use of the Products which does not comply with the Specifications issued by either of the Parties or by a third party (professional recommendation, technical notice.)

MATERIAL :
① Flexible conduit
② Seal : Elastomer
③ Retaining clip : Polyamid
④ Backshell body :Polyamid
⑤ Coupling Nut : Polyamid
Insert : Polychloroprene
Shell : Polyamid
Coupling spring : Stainless steel
O'seal : Nbr
Contact : brass + gold plated

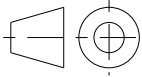
PERFORMANCE CHARACTERISTICS :
Operating temperature:-40° C up to 105° C
Corrosion salt spray:500 hours
Sealing in assembly conditions: (with an UTS connector)
-IP68 compliant ; 1 bars/30 min
-IP69K as per DIN40050
Insulation resistance: 5000 M min
Test potential : 2000Vrms for #16 layout and 1500Vrms for #20 layout
Durability: 250 matings and unmatings

NOTES :
-1-Insert arrangements refer to BT297
see drawing for information :C144-UTS1-A
-2-Delivered as a kit in a plastic bag (individual):
with parts 2, 3, 4 and 5
-3-Flexible conduit not sold by SOURIAU
-4-Recommended flexible conduit range: PMAFLEX
-5-For assembly instruction, see BT297

Plug UTS UTS6
Backshell FC type FC
Shell size 14
E: Hansolder contact E
Insert arrangement 12
P = Male contact P
S = Female contact .
Orientations _____
Normal (no digit), W, X, Y, Z = different orientations

Country	Jurisdiction & Control List
FR	NOT LISTED

P/N : UTS6FC**E**P/S

C	29/11/2017	Update notes		22523D
ISS	DATE	Latest modification - by: COURTOIS L.		MOD N°
Designed by: J. FEURPRIER		Date: 02/04/2017	CUSTOMER DRAWING	
TITLE		ASSEMBLY BACKSHELL AND UTS PLUG CONNECTOR UTS HI SEAL CONNECTOR		
Scale 1/2		General linear Tolerances: ± 0.2	NPRDS / PROJECT IC124509A	
SOURIAU		WWW.SOURIAU.COM		This document is the property of SOURIAU It must not be reproduced or communicated without permission
FORMAT A3	SOURIAU DRG N° C216-UTS1-A			SHEET 1 / 1