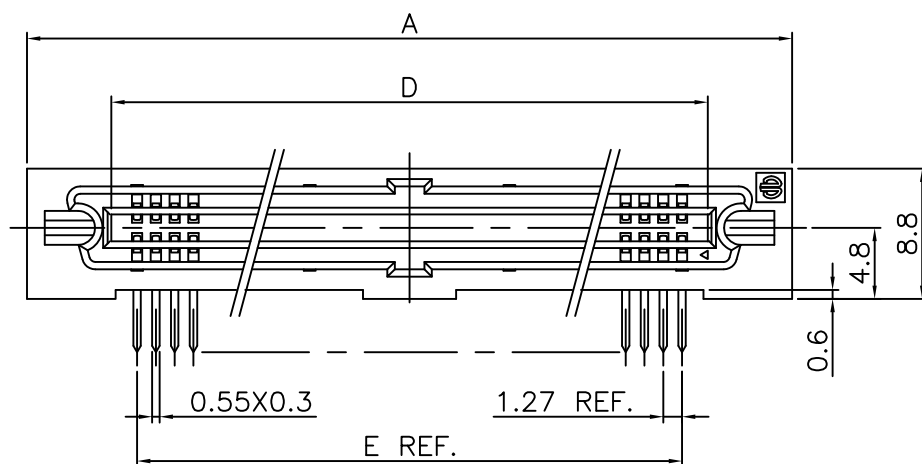
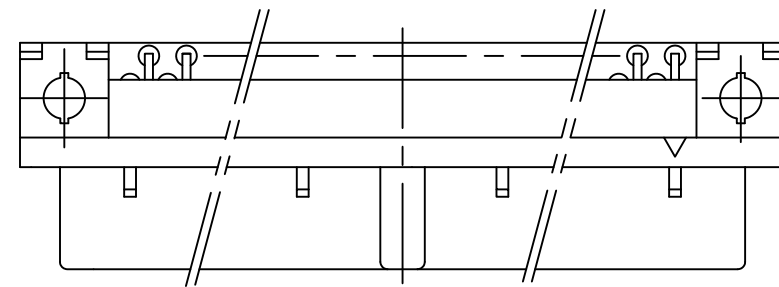
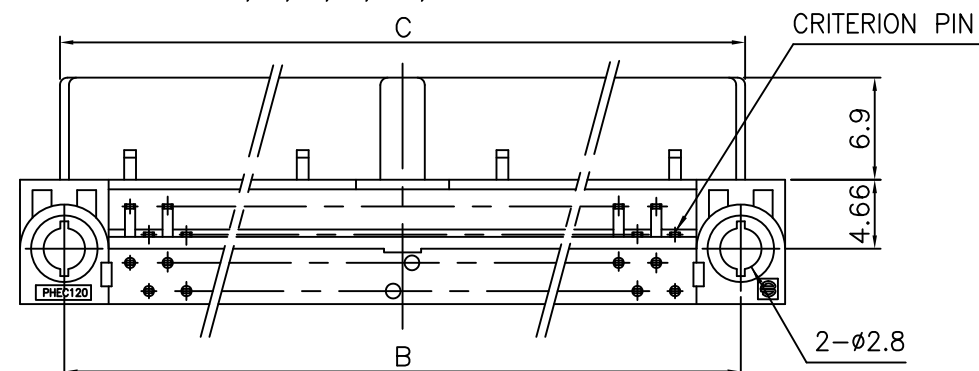


PRODUCT NO.

JSC 97409



NO. OF CONTACTS:40,60,68,80,100,120

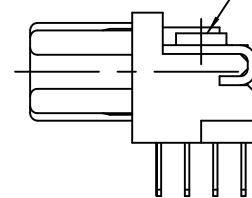


## NOTES

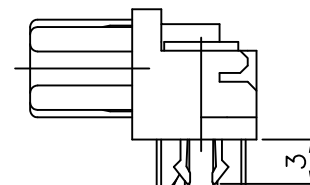
- 1.BODY, LOCATOR MATERIAL : PBT GLASS FILLED (UL94V-0), COLOR BLACK
- 2.TERMINAL MATERIAL : PHOSPHOR BRONZE
- 3.MOUNTING LATCH MATERIAL : PHOSPHOR BRONZE
- 4.SCREW NUT : STEEL
- 5.TERMINAL FINISH  
CONTACT AREA : GOLD 0.25 $\mu$ m min. OVER NICKEL UNDERLAYER  
SOLDER TAILS : PURE Sn 2 $\mu$ m min. OVER NICKEL UNDERLAYER
- 6.MOUNTING LATCH FINISH : PURE Sn 2 $\mu$ m min. OVER NICKEL UNDERLAYER
- 7.SCREW NUT FINISH : NICKEL
- 8.THIS PRODUCT MEETS EUROPEAN UNION DIRECTIVES AND OTHER COUNTRY REGULATIONS AS DESCRIBED IN GS-22-008
- 9.THE HOUSING WILL WITHSTAND EXPOSURE TO 260 DEGREE PEAK TEMPERATURE FOR 10 SECONDS IN A WAVE SOLDER APPLICATION WITH A 1.6mm MINIMUM THICK CIRCUIT BOARD.

SCREW NUT

M2.6

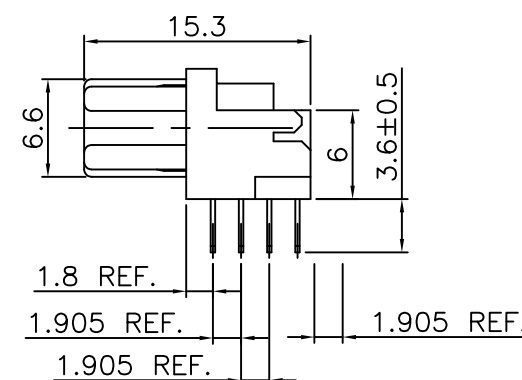


PHEC\_\_\_R-R212 Obsolete



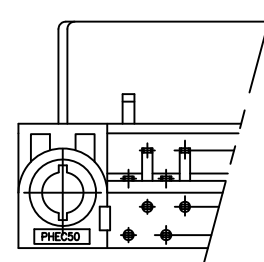
MOUNTING LATCH

PHEC\_\_\_R-R211



PHEC\_\_\_R-R210

NO. OF CONTACTS:30,34,50

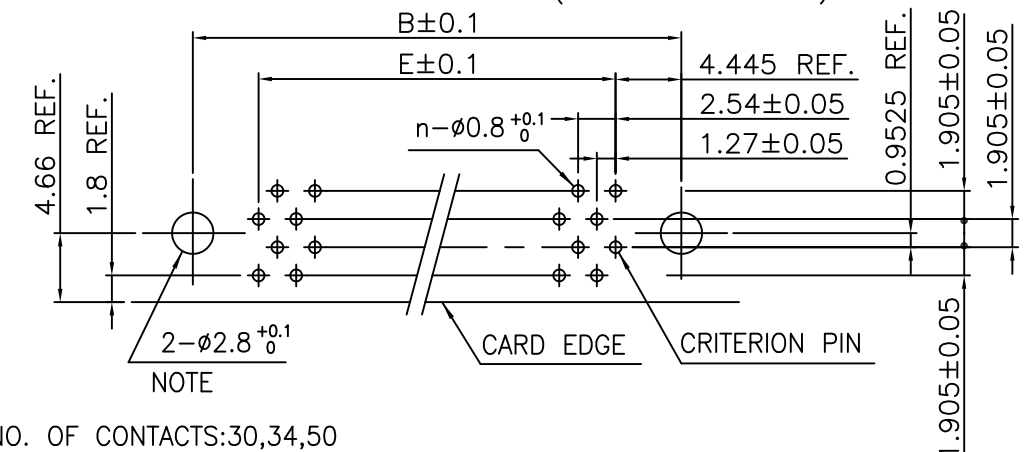


## RECOMMENDED PC BOARD

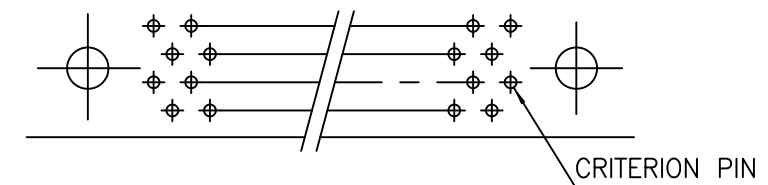
THICKNESS:1.6 ±0.2

HOLE PATTERN (COMPONENT SIDE)

NO. OF CONTACTS:40,60,68,80,100,120 (n:NO. OF CONTACTS)



NO. OF CONTACTS:30,34,50



NOTE : THROUGH-HOLES FOR MOUNTING LATCHES ALSO SHOULD BE PLATED.

CAT. NO.	NO. OF CONTACTS (MATING SIDE)	DIMENSIONS				
		A	B	C	D	E
PHEC30R-R21_LF	15/ROW X 2 ROWS	32.67	26.67	27.26	21.26	17.78
PHEC34R-R21_LF	17/ROW X 2 ROWS	35.21	29.21	29.80	23.80	20.32
PHEC40R-R21_LF	20/ROW X 2 ROWS	39.02	33.02	33.61	27.61	24.13
PHEC50R-R21_LF	25/ROW X 2 ROWS	45.37	39.37	39.96	33.96	30.48
PHEC60R-R21_LF	30/ROW X 2 ROWS	51.72	45.72	46.31	40.31	36.83
PHEC68R-R21_LF	34/ROW X 2 ROWS	56.80	50.80	51.39	45.39	41.91
PHEC80R-R21_LF	40/ROW X 2 ROWS	64.42	58.42	59.01	53.01	49.53
PHEC100R-R21_LF	50/ROW X 2 ROWS	77.12	71.12	71.71	65.71	62.23
PHEC120R-R21_LF	60/ROW X 2 ROWS	89.82	83.82	84.41	78.41	74.93

mat'l. code					surface ISO 1302			tolerance ISO 406 ISO 1101			projection		product family					CODE JP		
---					ISO 1302			ISO 406 ISO 1101					PHEC							
ltr	description	ecn no	dr	date	tolerances unless otherwise specified								title							
A	RELEASED	J08-0178	S.W	2008-4-18	angles	linear	O.X		±0.3				PRINTED CIRCUIT CONNECTOR							
B	EOL of R212LF	ELX-J-17067	S.W	2014-2-27			O.XX		±0.3				(CAT.NO.PHEC _ _ _ R-R21_LF)							
							O.XXX		±0.3				scale N/A							
					dr	S.Watanabe		2014-2-27				dwg no					sheet 1 of 1		size	
					enr	S.Watanabe		2014-2-27				JSC 97409							A3	
					chr	K.Ito		2014-2-27												
					appd	Y.Kameda		2014-2-27												
sheet index	revision	B																Rev.		
	sheet	1																B		

# Mouser Electronics

Authorized Distributor

Click to View Pricing, Inventory, Delivery & Lifecycle Information:

[FCI / Amphenol:](#)

[PHEC40R-R211LF](#)