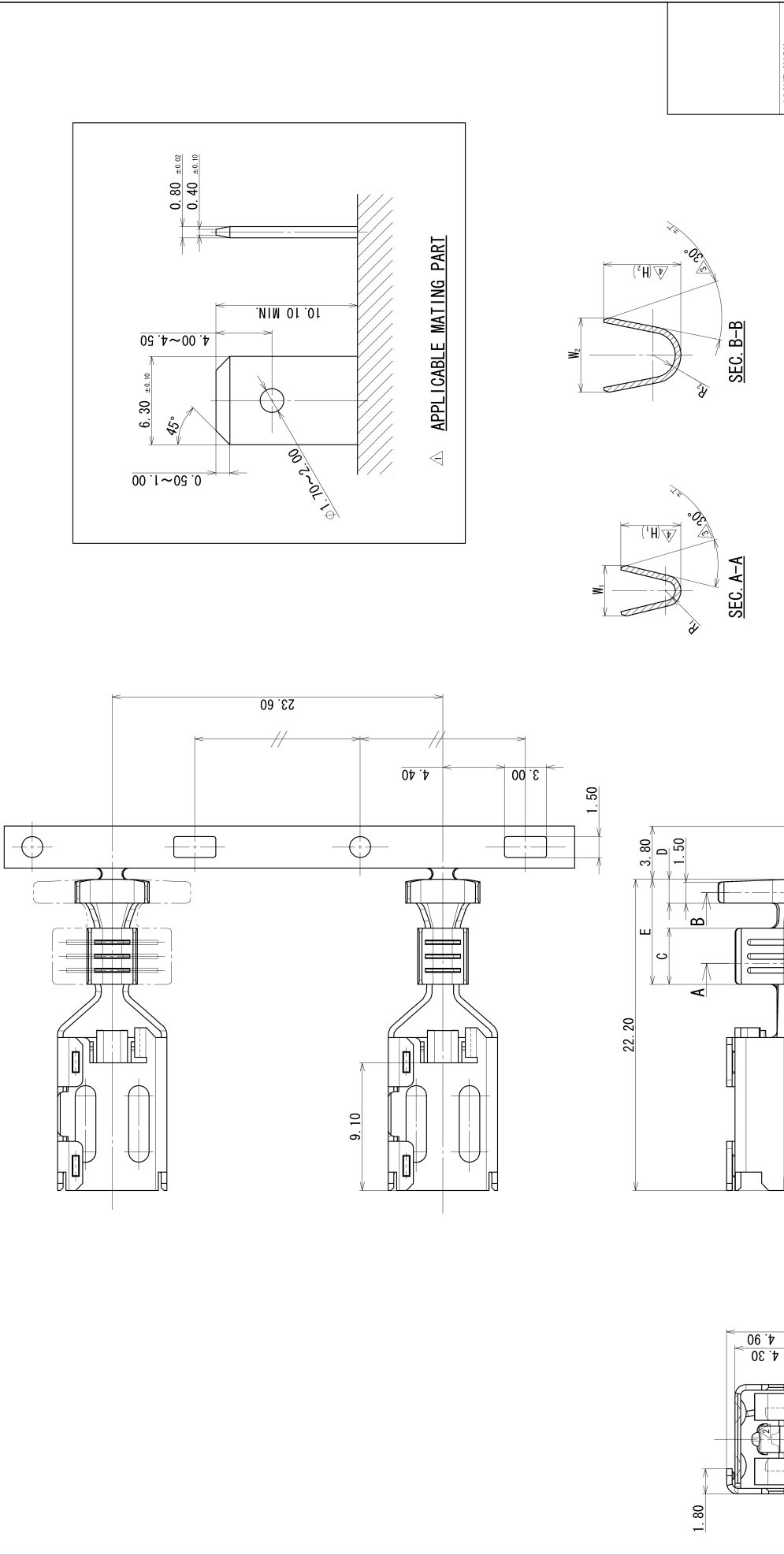


1	2	3	4	5
YAZAKI PART NO. AND CH. CODE	C	D	E	W <sub>1</sub>
7116-2951: A	4.00	1.70	7.50	3.60
7116-2951-02: A	//	//	//	//
7116-2952: A	3.00	1.70	6.50	2.40
7116-2952-02: A	//	//	//	//
WIRE SIZE	R <sub>1</sub>	W <sub>2</sub>	R <sub>2</sub>	Δ H <sub>1</sub>
AVS 0.85~2.00 EQUIVALENT	0.70	5.30	1.60	(3.90)
Δ BRASS, t=0.40	//	//	//	//
Δ TIN PLATE	//	//	//	//
AVS 0.70~0.50 EQUIVALENT	0.40	3.90	1.10	(2.80)
Δ BRASS, t=0.40	//	//	//	//
Δ TIN PLATE	//	//	//	//



CUSTOMER		MATERIAL		TREAT.		ISSUE MARK	
CUSTOMER PART NO.		SPEC.		F. IN.			
OFFICE		NAME		SEL 250 TYPE TERMINAL FEMALE			
VENDOR		PART NO.		CH. CODE		SET DWG NO.	
VENDOR NO.		DNG DATE		DNG NO.		YAZAKI CORPORATION	
DNG TYPE		DNG SOURCE		DNG DATE		1990/12/13	
R		NEW		1990/12/13		5:1	
APPROVED		CHECKED		DESIGN		DRAWN	
K. SUZUKI		H. SHIBATA		KAMEYAMA		J. CANDO	
2013/02/21		2013/02/21		1990/12/13		2013/02/21	
3		4		5			

LET	DATE	REVISION	RECORD	NO.	CHD
Δ	2013/02/21	UPDATE OF DRAWING ETC.		C13-2096	J. C
Δ	2002/04/12	CHANGED DIMENSION		C02-X446	K. S
Δ	1995/10/02	CHANGED FORM. A		C95-M553	Y. Y
Δ	1992/08/20	ADDITIONAL APPLICABLE		C92-6802	I. K
Δ	1990/12/13	NEW		C90-7811	I. K

# Mouser Electronics

Authorized Distributor

Click to View Pricing, Inventory, Delivery & Lifecycle Information:

Yazaki:

[7116295102](#) [71162951](#)