

REV	REVISIONS	DRN	CKD	APP	DATE
A	NEW RELEASE	LD	—	NO	8-26-19
B	ADDED DIM FROM LED CENTER TO BOTTOM SURFACE AND UPDATED THE DIM TOLERANCES	LD	—	NO	8-28-19
C	CENTER TO CENTER HOLE DISTANCE WAS .600 ON HOLE PATTERN	LD		CS	4-17-23

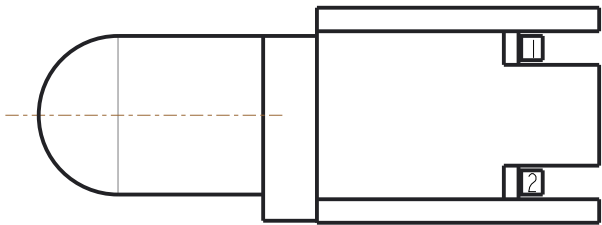
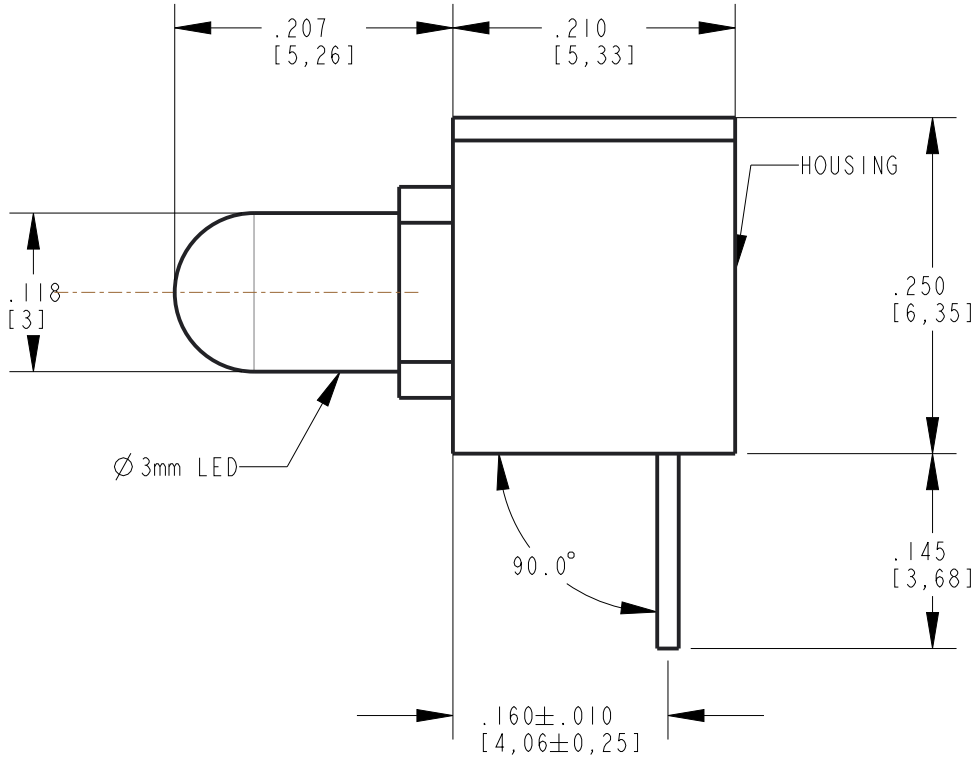
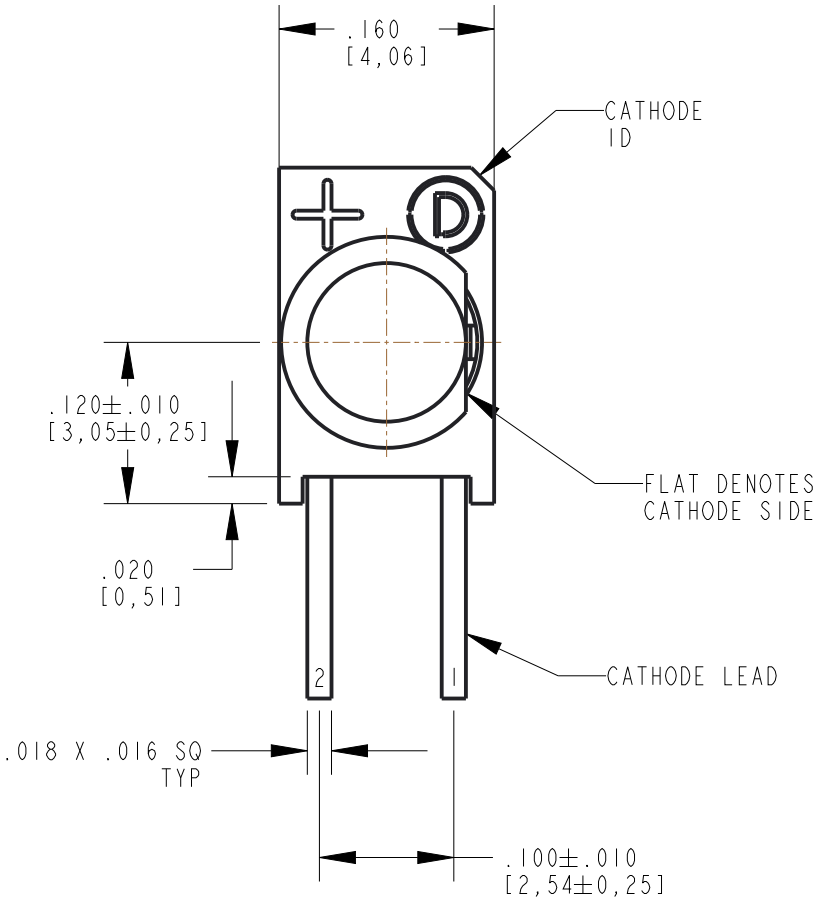
NOTES:

1. DIALIGHT PART NUMBER: 551-6009-801F.
2. LED LEAD DIMENSIONS SHOWN ARE MEASURED AT HOUSING EXIT.
3. LEADS TO FIT INTO HOLES SPACED AS PER PATTERN.
4. PIN NUMBERS FOR REFERENCE ONLY, DESIGNATION NON EXISTENT ON PART.
5. THIS ASSEMBLY CONTAINS ELECTROSTATIC DISCHARGE SENSITIVE DEVICES ESDS. MAINTAIN ALL PRECAUTIONARY MEASURES DURING ASSEMBLY, HANDLING AND STORAGE IN ACCORDANCE WITH IPC-A-610

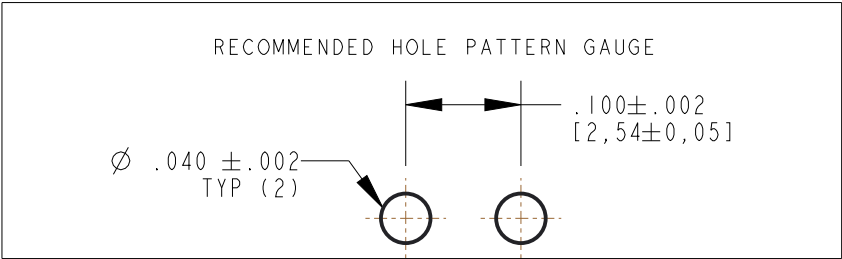
HUE SPEC. TABLE						
HUE RANK	CHROMATICITY COORDINATES LIMITS I <sub>F</sub> = 20 mA					
A1	X	0.2500	0.2700	0.2700	0.2500	
	Y	0.2175	0.2455	0.2780	0.2500	
A2	X	0.2500	0.2700	0.2700	0.2500	
	Y	0.1850	0.2130	0.2455	0.2175	
B1	X	0.2700	0.2900	0.2900	0.2700	
	Y	0.2455	0.2735	0.3060	0.2785	
B2	X	0.2700	0.2900	0.2900	0.2700	
	Y	0.2130	0.2410	0.2735	0.2455	
C1	X	0.2900	0.3100	0.3100	0.2900	
	Y	0.2735	0.3030	0.3355	0.3060	
C2	X	0.2900	0.3100	0.3100	0.2900	
	Y	0.2410	0.2705	0.3030	0.2735	
COLOR COORDINATES MEASUREMENT ALLOWANCE IS ±0.01						

OPERATING CHARACTERISTICS AT 25°C AMBIENT						
LED CHARACTERISTICS		MIN.	TYP.	MAX.	UNITS	TEST CONDITIONS
LUMINOUS INTENSITY		5500	9300	12000	mc d	I <sub>F</sub> = 20 mA
FORWARD VOLTAGE		2.7	3.3	3.6	V	I <sub>F</sub> = 20 mA
REVERSE CURRENT		—	—	10	mA	V <sub>R</sub> = 5 V
VIEWING ANGLE		—	25	—	DEGREE	
CHROMATICITY COORDINATES	X	—	0.30	—		I <sub>F</sub> = 20 mA SEE HUE SPEC. TABLE
	Y	—	0.30	—		

ABSOLUTE MAXIMUM RATINGS AT 25°C AMBIENT		VALUE	UNITS
POWER DISSIPATION		120	mW
PEAK FORWARD CURRENT (1/10 DUTY CYCLE, 0.1ms PULSE WIDTH)		100	mA
CONTINUOUS FORWARD CURRENT		30	mA
LINEAR DERATING FROM 30°C		0.5	mA/°C
REVERSE VOLTAGE		5	V
LEAD SOLDERING TEMPERATURE (.080" [2,0mm] FROM BODY) FOR 5 SEC.		260	°C
OPERATING TEMPERATURE		-30 TO +80	°C
STORAGE TEMPERATURE		-40 TO +100	°C



**ATTENTION:**  
OBSERVE PRECAUTIONS FOR  
HANDLING ELECTROSTATIC  
SENSITIVE DEVICES



THIS DRAWING AND THE CONTENTS HEREIN ARE CONFIDENTIAL AND THE SOLE PROPERTY OF DIALIGHT CORP. REPRODUCTION OF THIS DRAWING OR CONSTRUCTION OF ANY PARTS WITHIN THIS DRAWING ARE FORBIDDEN WITHOUT THE WRITTEN CONSENT OF DIALIGHT CORP.			
DIALIGHT CORP. INTERNAL REFERENCE ONLY = 3D MODEL : 5516009801F-A.17			
SCALE: 7.000		DRAWING NUMBER	
ALL DIM's: INCH (mm)		REV	
TOLERANCES: UNLESS OTHERWISE SPECIFIED		C-18442	
FRACTIONS: ±1/64		TITLE	
DECIMALS (.XX): ±.01		3mm CBI RIGHT ANGLE WHITE	
DECIMALS (.XXX): ±.005		MATERIAL	
DECIMALS (.XXXX): ±.0005		SEE BOM	
ANGLES: ±1°		FINISH	
-		Dialight	
FSCM 83330		1501 ROUTE 34 SOUTH FARMINGDALE, NJ 07727 (732) 919-3119 www.dialight.com	
SHEET 1 OF 1		FAMILY TABLE:	