



*Image for illustrative purpose only*

## Summary

[Request a quote](#)

[Catalog](#)

Gender	Standard
Locking system	Push-pull
Jacket cable outside diameter [mm]	5.30 - 6.50 mm
Size	1P
Series	REDEL P - Push-Pull

[https://www.lemo.com/int\\_en/solutions/redel/redel-p-push-pull/pla-765-ug.html](https://www.lemo.com/int_en/solutions/redel/redel-p-push-pull/pla-765-ug.html)

LEMO products and services are provided "as is". LEMO makes no warranties or representations with regard to LEMO product & services or use of them, express, implied or statutory, including for accuracy, completeness, or security. The user is fully responsible for his products and applications using LEMO components.

# Technical details

## Electrical Configuration

Gender	Standard
--------	----------

## Form & Material

Shell style / Model id	PL - Collet for REDEL 1P series
Housing material	PSU (Polysulfone), gray
Locking system	Push-pull
Keying	3 keys (alpha=42, gamma=30, plug: male contacts, receptacle: female contacts)
Weight	0.49 g

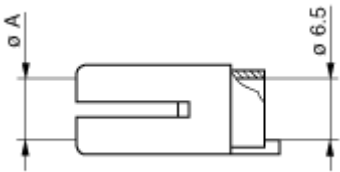
## Environment

Technical domain	Energy and Industrial, Medical, Test and Measurement, Transportation, Aerospace and UAV
Environmental sealing (IP rating)	IP50
Temperature range	-50°C / +150°C

## Cable fixation

Cable termination protection	Standard back nut (no additional protection)
Jacket cable outside diameter [mm]	5.30 - 6.50 mm

# Drawings



## Dimensions

A	
mm.	6.5
in.	0.26

[https://www.lemo.com/int\\_en/solutions/redel/redel-p-push-pull/pla-765-ug.html](https://www.lemo.com/int_en/solutions/redel/redel-p-push-pull/pla-765-ug.html)

LEMO products and services are provided “as is”. LEMO makes no warranties or representations with regard to LEMO product & services or use of them, express, implied or statutory, including for accuracy, completeness, or security. The user is fully responsible for his products and applications using LEMO components.