

MICRO SWITCH

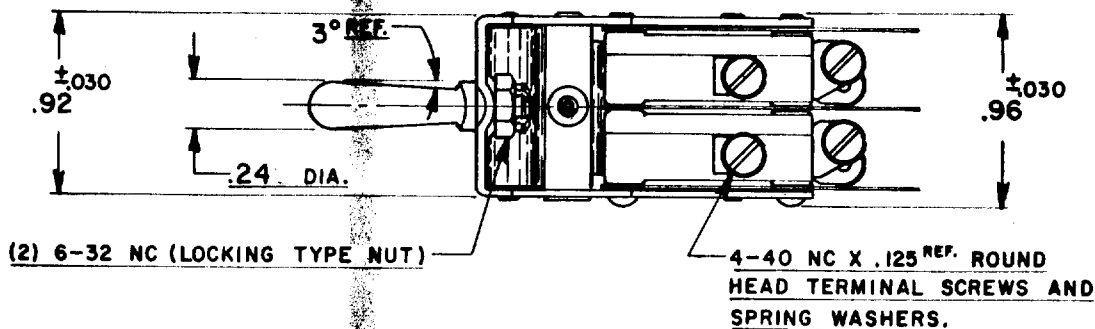
A DIVISION OF MINNEAPOLIS-HONEYWELL REGULATOR COMPANY
FREEPORT, ILLINOIS

FED. MFR. CODE 91929

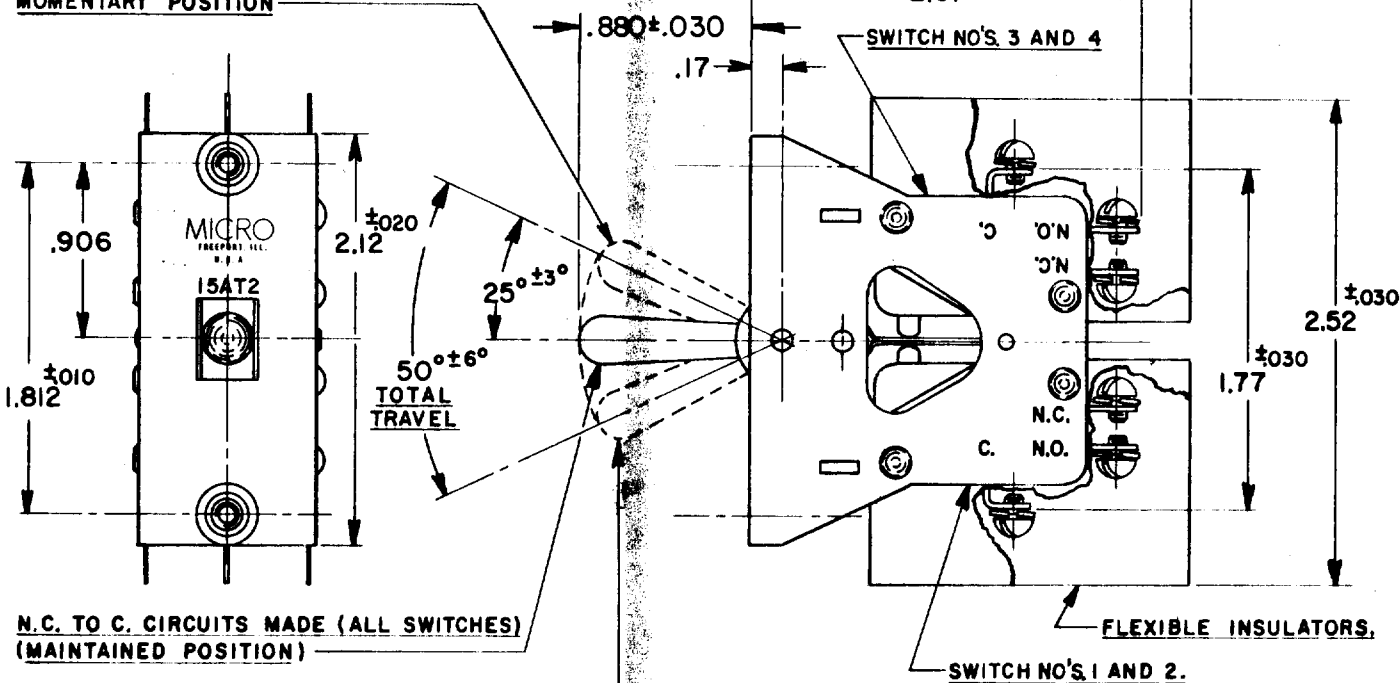
ASSEMBLY- TOGGLE SWITCH

CATALOG LISTING

15AT2



N.O. TO C. CIRCUIT MADE (SWITCH NO'S. 1 AND 2)
N.C. TO C. CIRCUIT MADE (SWITCH NO'S. 3 AND 4)
MOMENTARY POSITION



NOTE:

- 1-UNIT INCLUDES (4) CAT. LIST. V3-444 BASIC SWITCHES.
- 2 SWITCHES DO NOT OPERATE SIMULTANEOUSLY

THIS DRAWING COVERS A PROPRIETARY ITEM AND IS THE PROPERTY OF MICRO SWITCH, A DIVISION OF HONEYWELL. THIS DRAWING IS NOT TO BE COPIED OR USED WITHOUT THE APPROVAL OF MICRO SWITCH.

CHARACTERISTICS

ELECTRICAL DATA

SCALE FULL

CONTACT ARRANGEMENT
(4) S.P.D.T.

BREAK DISTANCE
.040 APPROX.

DO NOT SCALE PRINT

(B)

15 A-1/3 HP-125 OR 250 VAC
1/2 A-125 VDC; 1/4 A-250 VDC

UNLESS OTHERWISE
SPECIFIED
DIMENSIONS ARE IN INCHES
TOLERANCES ARE:
ONE PLACE (.0) $\pm .030$
TWO PLACE (.00) $\pm .015$
THREE PLACE (.000) $\pm .005$
ANGLES \pm

WEIGHT

15AT2

M

DRAWING
NUMBER

ISSUE
6

REVISIONS

A NEW DWG.
S.R. 4033

A.A.S.
17 MAY 55

B CO17248
MBF
23 AUG 62

C CO 59602
KAG
8 AUG 86

C CO 60089
KAG
8 AUG 86

C CO 60089
KAG
8 AUG 86

C CO 60089
KAG
8 AUG 86

C CO 60089
KAG
8 AUG 86

C CO 60089
KAG
8 AUG 86

C CO 60089
KAG
8 AUG 86

C CO 60089
KAG
8 AUG 86

C CO 60089
KAG
8 AUG 86

C CO 60089
KAG
8 AUG 86

C CO 60089
KAG
8 AUG 86

C CO 60089
KAG
8 AUG 86

C CO 60089
KAG
8 AUG 86

C CO 60089
KAG
8 AUG 86

C CO 60089
KAG
8 AUG 86

C CO 60089
KAG
8 AUG 86

C CO 60089
KAG
8 AUG 86

C CO 60089
KAG
8 AUG 86

C CO 60089
KAG
8 AUG 86

C CO 60089
KAG
8 AUG 86

C CO 60089
KAG
8 AUG 86

Mouser Electronics

Authorized Distributor

Click to View Pricing, Inventory, Delivery & Lifecycle Information:

[Honeywell:](#)

[15AT2](#)