

A

B

C

D

E

F

A

B

C

D

E

F

REV	LOCATIONS	DESCRIPTION	DATE	REVISER	APPD

SPECIFICATIONS

Electrical

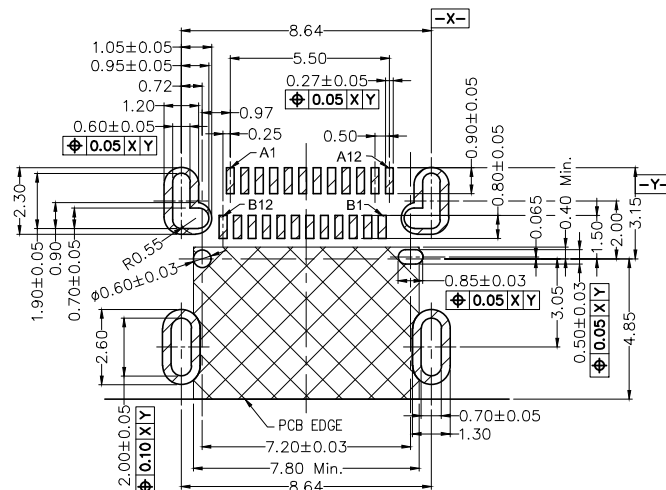
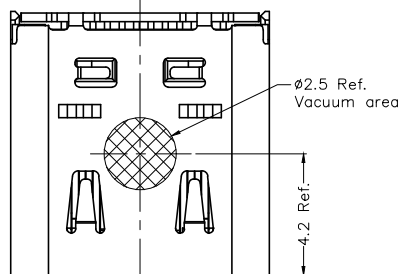
Current Rating: 5.0A
Voltage Rating: 5V AC(rms)
Contact Resistance: 40 mΩ Max.
Insulation Resistance: 100 MΩ Min.
Withstanding Voltage: 100V AC r.m.s
Temperature Range—Operating: -40°C~+85°C

Mechanical

Insertion Force: 5~20 N
Withdrawal Force: 8~20 N
Durability: 10,000 cycles

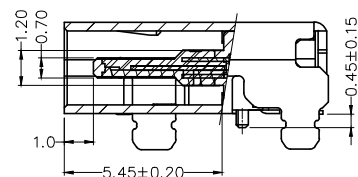
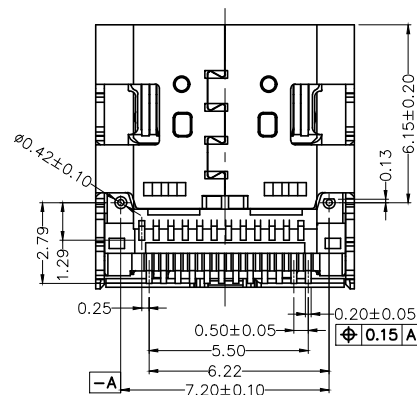
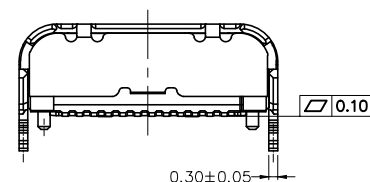
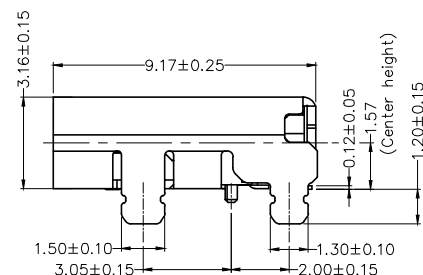
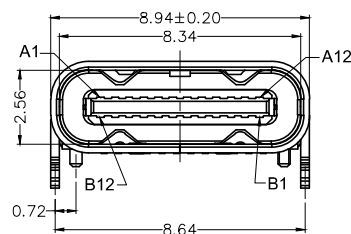
Material and Plating

Housing: PA9T 30%G.F (UL94 V-0), Black
Terminal: Copper alloy/ 3μ" Gold plated on contact area
and gold flash on tails area
MID Plate: SUS 301/ Nickel plated
Shell: SUS 304/ Nickel plated



Recommended P.C.Board Layout

General Tolerances: ±0.05



Pin assignment

Circuits	A	Circuits	B
A1	GND	B12	GND
A2	TX1+	B11	RX1+
A3	TX1-	B10	RX1-
A4	VBUS	B9	VBUS
A5	CC1	B8	SBU2
A6	D+	B7	D-
A7	D-	B6	D+
A8	SBU1	B5	CC2
A9	VBUS	B4	VBUS
A10	RX2-	B3	TX2-
A11	RX2+	B2	TX2+
A12	GND	B1	GND

<div><div><div></div><div></div></div><div>THIRD ANGLE PROJECTION</div></div>		GENERAL TOLERANCES (UNLESS SPECIFIED)		APPROVE BY FRANK	DATE 24/APR/22	PART NO. FUS642-FSBBKM	ITEM NO. FUS642	<div><div><div></div><div></div></div><div>TXGA</div><div>Leader Of Industry</div></div>	
		X. ±0.30	X.* ±5°	CHECKED BY	DATE	TITLE USB Type C 90° Angle Female(SMT)(3.1)			
DESIGN UNITS Metric		X.X ±0.20	X.X* ±2°	CHERRY	24/APR/22			REV 0	
		X.XX ±0.15	X.XX* ±1°	DRAWN BY	DATE	THIS DRAWING CONTAINS INFORMATION THAT IS PROPRIETARY TO TXGA INDUSTRIAL ELECTRONICS(S.Z)CO.,LTD AND SHOULD NOT BE USED WITHOUT WRITTEN PERMISSION			
SCALE 1:1	SIZE A4	X.XXX ±0.10	X.XXX* ±0.5°	KATE	24/APR/22				

A

B

C

D

E

F

1

2

3

4

5

6

7

8

REV	LOCATIONS	DESCRIPTION	DATE	REVISER	APPD

Note:

1. 10 sprocket hole cumulative tolerance ± 0.2
2. Carrier camber is within 1.0mm in 250mm
3. Material: Clear conductive polystyrene Alloy 100% recyclable
4. All dimensions meet EIA-481-3 requirements
5. Peel off force of cover tape & carrier tape: 20g~130g (0.2N~1.3N)
6. Component load per 15" reel: 1,100 pcs

A

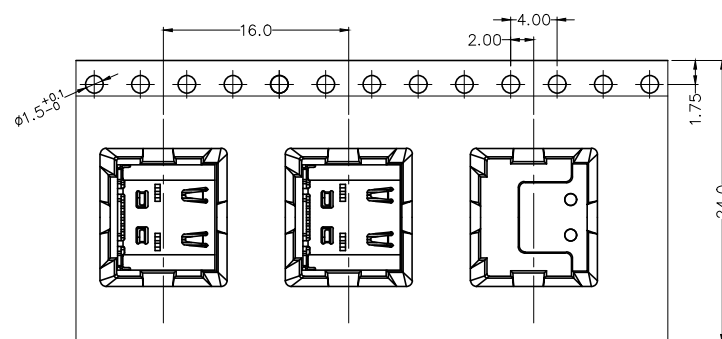
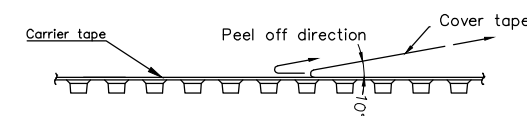
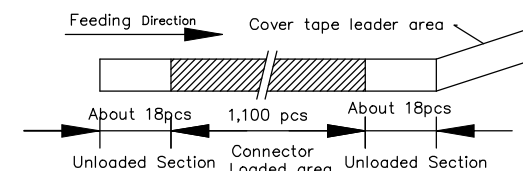
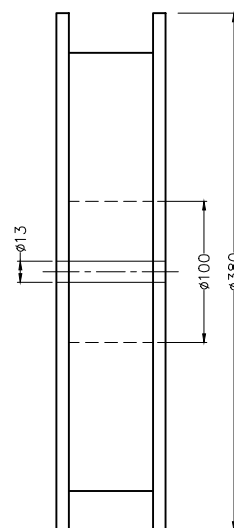
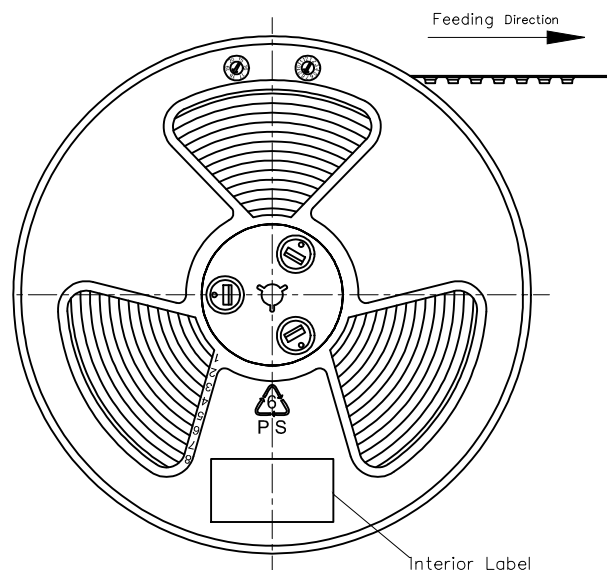
B

C

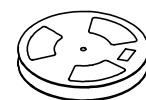
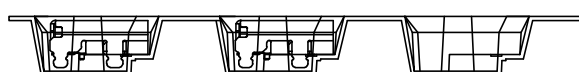
D

E

F

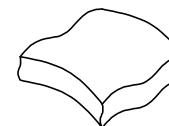


Feeding Direction

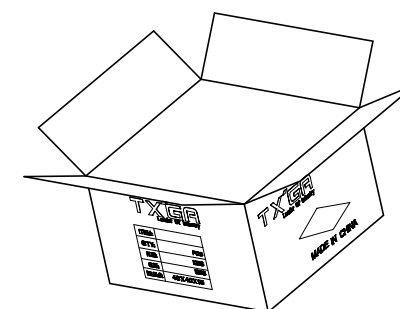




1,100 pcs/Reel

PE Bag



Drying agent/pcs



 THIRD ANGLE PROJECTION		GENERAL TOLERANCES (UNLESS SPECIFIED)		APPROVE BY FRANK	DATE 24/APR/22	PART NO. FUS642-FSBBKM	ITEM NO. FUS642	 Leader Of Industry	
		X. ±0.30	X.* ±5°	CHECKED BY	DATE	TITLE USB Type C 90° Angle Female(SMT)(3.1)			
DESIGN UNITS Metric		X.X ±0.20	X.X* ±2°	CHERRY	24/APR/22				
		X.XX ±0.15	X.XX* ±1°	DRAWN BY	DATE	THIS DRAWING CONTAINS INFORMATION THAT IS PROPRIETARY TO TXGA INDUSTRIAL ELECTRONICS(S.Z)CO.,LTD AND SHOULD NOT BE USED WITHOUT WRITTEN PERMISSION			
SCALE 1:1	SIZE A4	X.XXX ±0.10	X.XXX* ±0.5°	KATE	24/APR/22				

1

2

3

4

5

6

7

8