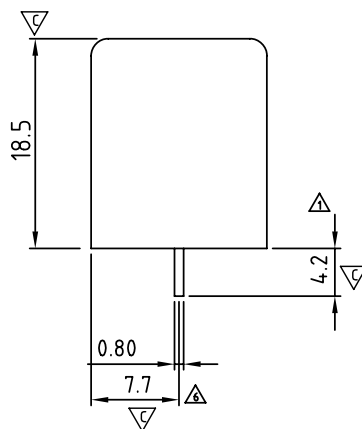


P.C.B Layout
TOP VIEW

N= Number of Poles
Dimension Dim A. B

Dim A	N×10.0+2.0
Dim B	(N-1)×10.0

Poles	Tolerance
2P-5P	±0.20
6P-10P	±0.25
11P-16P	±0.35
17P-24P	±0.40
25P-30P	±0.50


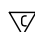


SIGN	DATE	DESCRIPTION	APPROVER
△	5/08'03	Dimension changed from 5.2 to 4.2	DAWN
△	5/08'03	Dimension changed from 1.4 to 1.50	DAWN
△	2/04'06	Part No. changed	Tony
△	11/13'12	Change the screw plating specification	Guoxue
△	11/13'12	Change the dimensional tolerance	Guoxue
△	11/13'12	Add the dimensional label	Guoxue

THIS IS CAD DRAWING, DO NOT REVISE MANUALLY!!!

MATERIALS ELECTRICAL

RATED VOLTAGE & CURRENT:	300 V, 25 A
WITHSTAND VOLTAGE:	AC 2000 V/Min
INSULATION RESISTANCE:	1000 MΩ OR MORE AT DC 500 V
OPERATING TEMPERATURE RANG:	-40 °C ~ +115 °C
SCREW TORQUE VALUE:	8.8 Lb-In.
WIRE RANGE:	22 - 12 AWG
1) MOLDED PARTS:	Thermoplastic, UL 94 V-0 BLACK
2) TERMINAL:	BRASS, 0.8t, Tin PLATED
3) TERMINAL SCREWS:	STEEL, M3.5

APPROVAL: 
Critical dimension: 

△ PART NO.:

YK 614 xx 0 x x 00G

NO. OF POLES
02: 2 POLES
03: 3 POLES
04: 4 POLES
...

30: 30 POLES

RoHS compliant
(lead<4%)
In copper Alloy

MARK

0: "@" MARK
1: "ANY" MARK


TERMINAL & SCREW PLATED

0: TERMINAL & SCREW: G/F
△ 1: TERMINAL: G/F, SCREW: ZINC
2: TERMINAL: Sn, SCREW: G/F
△ 3: TERMINAL: Sn, SCREW: ZINC

ANYTEK

CUSTOMER COPY

ALL RIGHTS RESERVED. REPRODUCTION OR ISSUE TO THIRD PARTIES IN ANY FORM WHATEVER IS NOT PERMITTED WITHOUT WRITTEN AUTHORITY FROM THE PROPRIETOR. PROPERTY OF ANYTEK TECHNOLOGY CO., LTD

TITLE	YK-614 W/O Flange Series						
PART NO.	YK614xx0xx00G			DWG NO.	8YK0001-614		
APPROVED	CHECKED	DESIGNED	DRAWN	CUST NO.			Tolerance
		Guoxue 2012.12.01	Guoxue 2012.12.01		UNIT: mm	X. ±0.50	
					SCALE: NONE	X.X ±0.30	
				SHEET: 01/01	REV.: D	X.XX ±0.10	
						X° ±1°	

Mouser Electronics

Authorized Distributor

Click to View Pricing, Inventory, Delivery & Lifecycle Information:

Amphenol:

<u>YK6140203000G</u>	<u>YK6140303000G</u>	<u>YK6140403000G</u>	<u>YK6140503000G</u>	<u>YK6140603000G</u>	<u>YK6140703000G</u>
<u>YK6140803000G</u>	<u>YK6140903000G</u>	<u>YK6141003000G</u>	<u>YK6141103000G</u>	<u>YK6141203000G</u>	<u>YK6141303000G</u>
<u>YK6141403000G</u>	<u>YK6141503000G</u>	<u>YK6141603000G</u>	<u>YK6141703000G</u>	<u>YK6141803000G</u>	<u>YK6141903000G</u>
<u>YK6142003000G</u>	<u>YK6142103000G</u>	<u>YK6142203000G</u>	<u>YK6142303000G</u>	<u>YK6142403000G</u>	<u>YK6142503000G</u>
<u>YK6142603000G</u>	<u>YK6142703000G</u>	<u>YK6142803000G</u>	<u>YK6142903000G</u>	<u>YK6143003000G</u>	