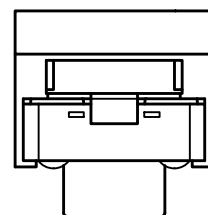


CIRCUIT: SPST

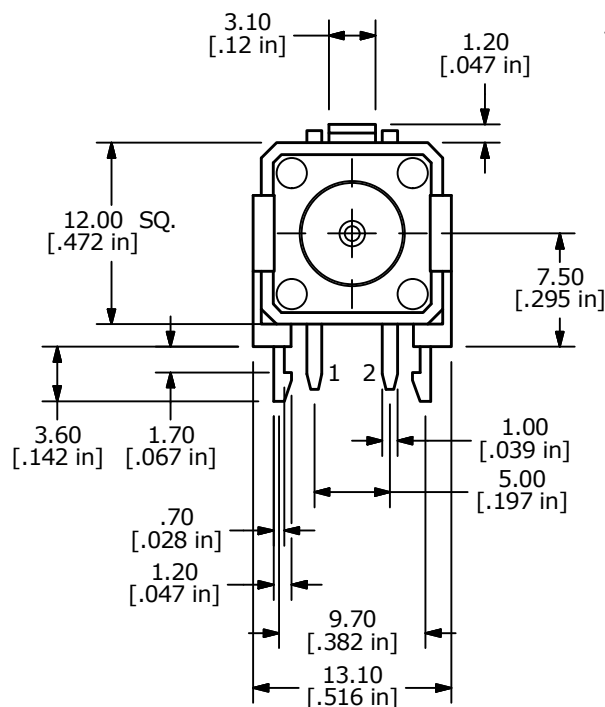
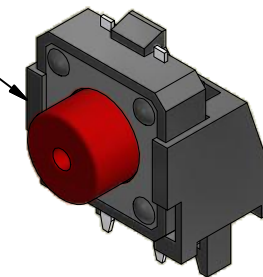
## NOTES:

1. ALL DIMENSIONS IN MM [INCH]
2. GENERAL TOLERANCE: X.X =  $\pm 0.4$   
X.XX =  $\pm 0.25$
3. TERM. NOS. FOR REF. ONLY
4. RATING: 50mA @12VDC
- ▲ 5. CONTACT MATERIAL: SILVER
6. TRAVEL:  $0.3 \pm 0.15$ mm
- ▲ 7. OPERATING FORCE:  $260 \pm 50$ gf
8. CONTACT RESISTANCE: 100m $\Omega$  MAX.
9. ELECTRICAL LIFE: 100,000 CYCLES min.
10. DIELECTRIC STRENGTH: 250V RMS min.
11. INSULATION RESISTANCE: 100 M $\Omega$  min.
12. ▲ DENOTES CRITICAL DIMENSION

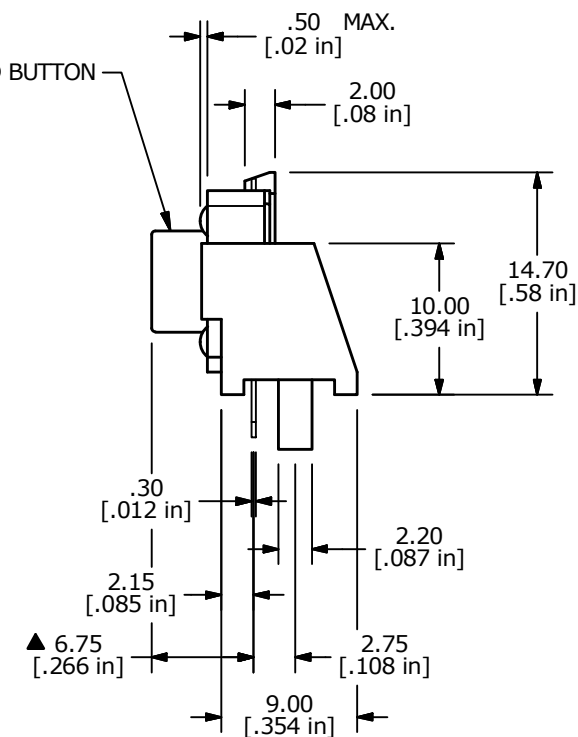


▲ Ø 6.70  
[.264 in]

▲ STANDARD  
RIGHT ANGLE BRACKET



▲ RED BUTTON



D	23875	correct pcb layout	5/6/19	MW
C	17921	CHANGE TO REV. C, AVOID CONFUSION	1/14/08	BLR
B	17841	RELEASE FOR PRODUCTION	12/12/07	BLR
A	17811	THIS PCR WAS REJECTED	10/30/07	BF
REV	PCR NO	DESCRIPTION	DATE	BY

THE INFORMATION CONTAINED IN THIS DOCUMENT IS PROPRIETARY  
TO E-SWITCH AND IS NOT TO BE COPIED OR TRANSFERRED



E-SWITCH®

TITLE TL1100TF260Q

SCALE  
2:1DATE  
1/14/2008DR  
BLRDWG  
P001175REV  
D

# Mouser Electronics

Authorized Distributor

Click to View Pricing, Inventory, Delivery & Lifecycle Information:

[E-Switch:](#)

[TL1100TF260Q](#)