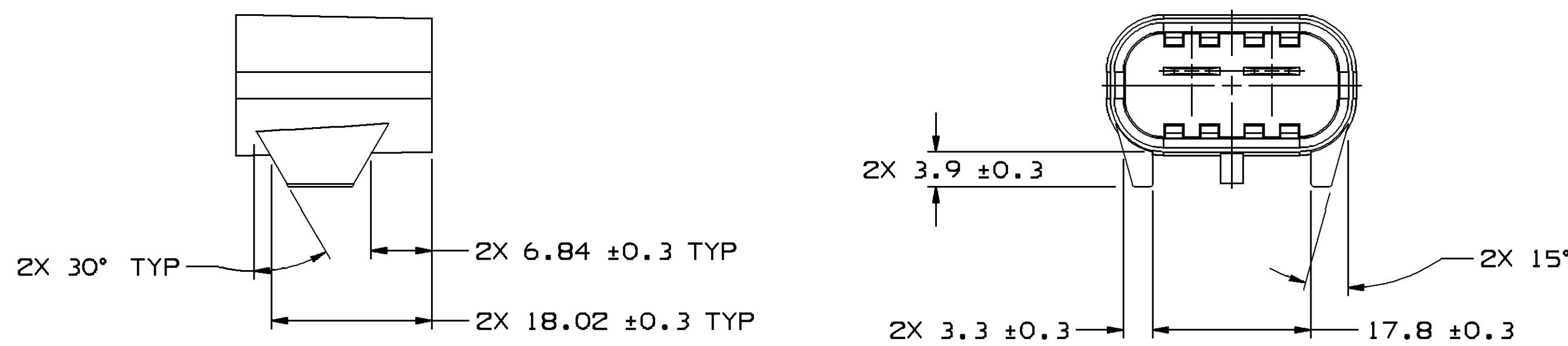
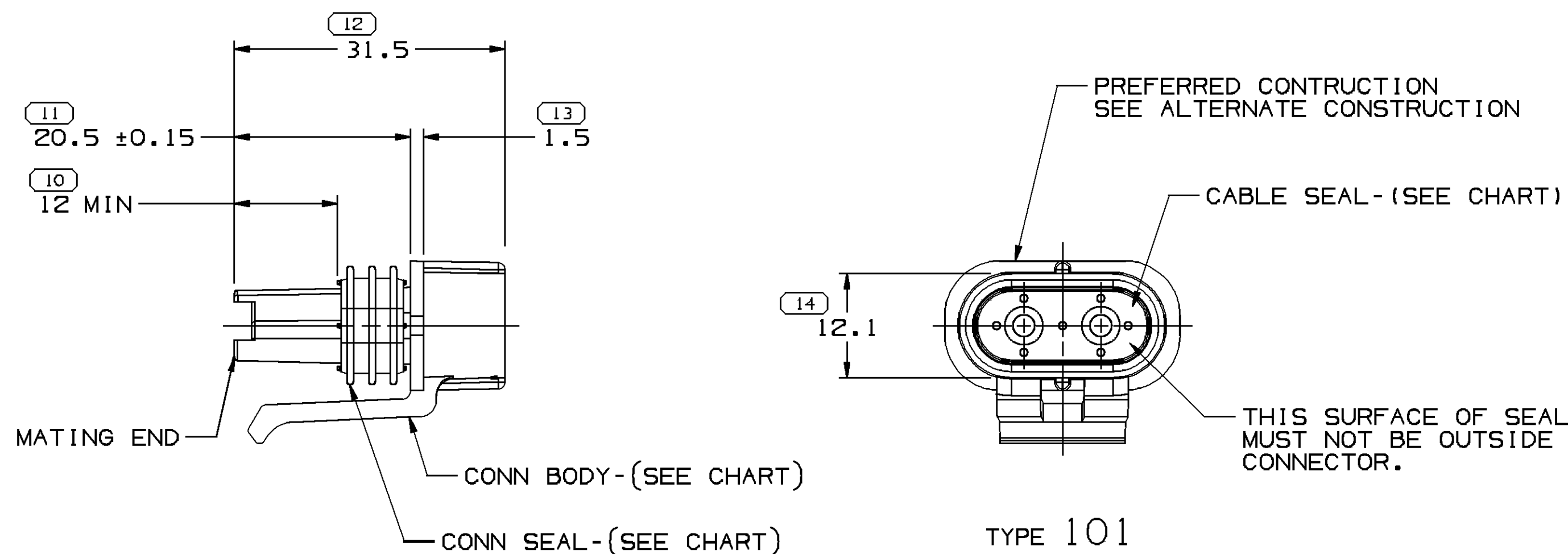
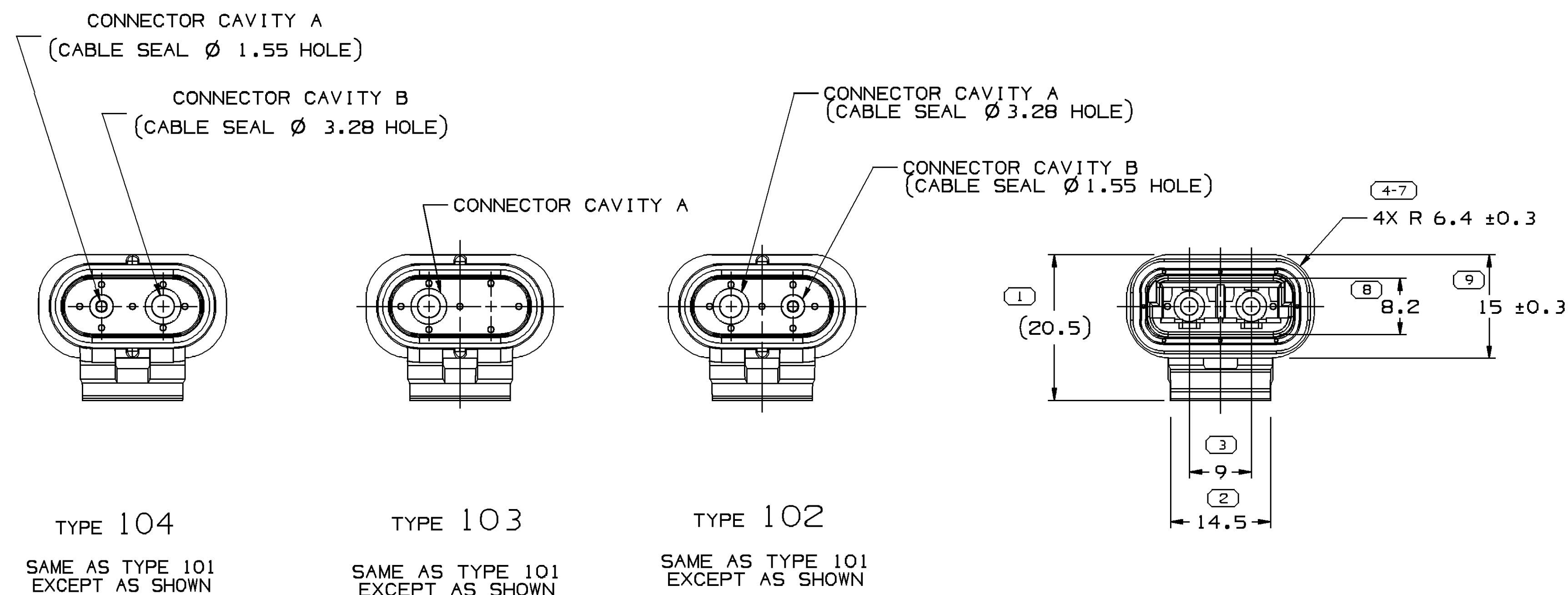


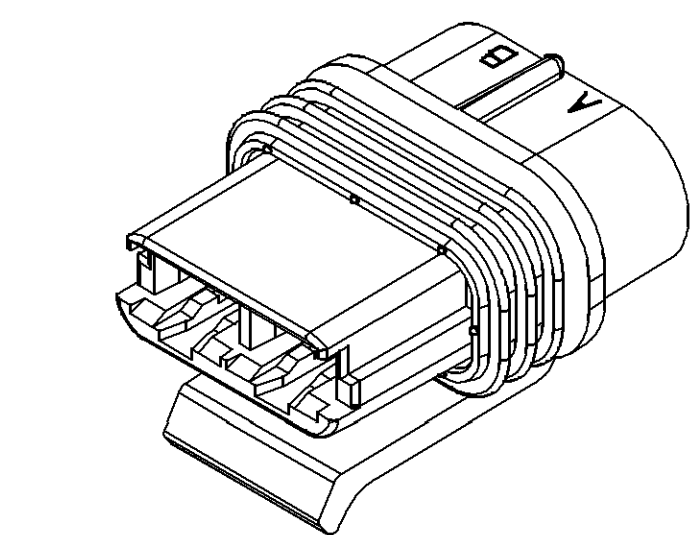
LOCK RAMP OPTIONAL CONSTRUCTION



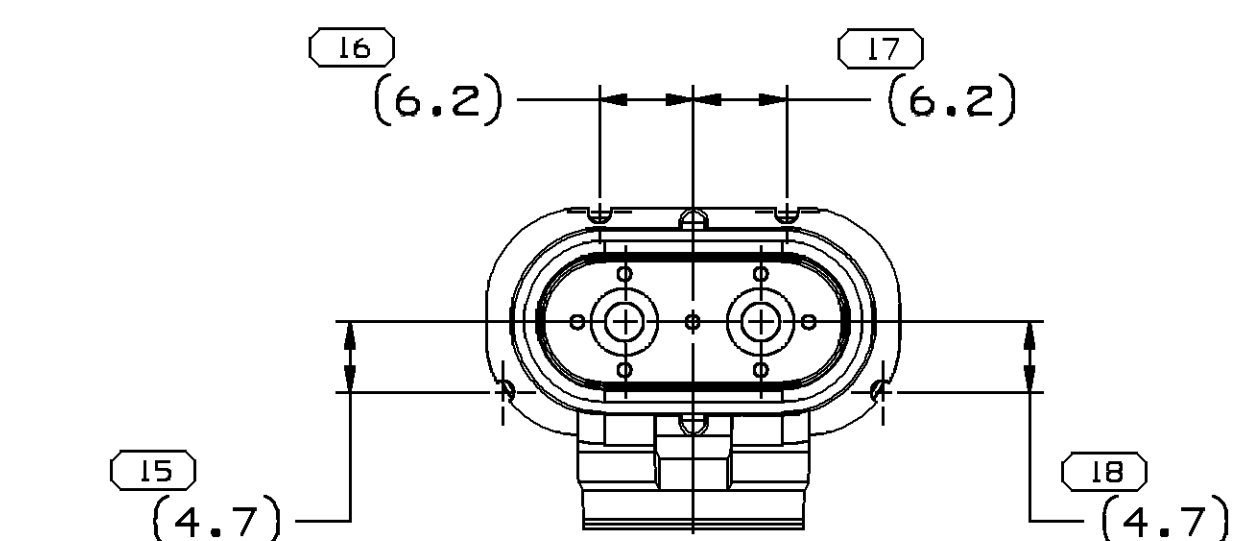
OPTIONAL CONSTRUCTION



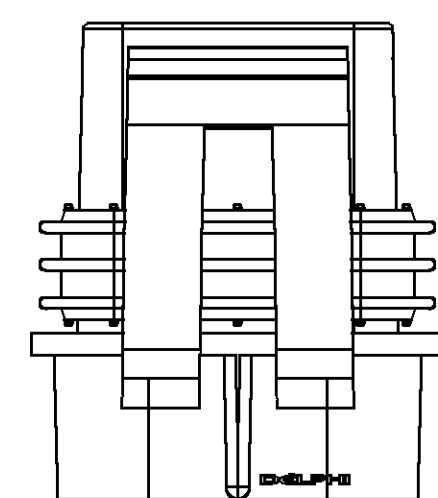
- NOTES
1. UNLESS OTHERWISE SPECIFIED AND/OR INDICATED: DIMENSIONS ARE TO FACE OF VIEW SHOWN AND AUTOMATICALLY ROUNDED BY COMPUTER FOR INSPECTION. (SEE MATH MODEL FOR PRECISE DIMENSIONS.) FOR ALL OTHER DIMENSIONS NOT SHOWN BUT REQUIRED FOR TOOL BUILD, SEE MATH MODEL FOR PRECISE TOOL PATH DATA. ALL RADII 0.4 DRAFT IS 0° 30' ON ALL OUTSIDE SURFACES.
  2. SHROUD MATERIAL NYLON 66 OR EQUIVALENT.
  3. UNLESS OTHERWISE SPECIFIED AND/OR INDICATED: DIMENSIONS ARE TO FACE OF VIEW SHOWN AND AUTOMATICALLY ROUNDED BY COMPUTER FOR INSPECTION. (SEE MATH MODEL FOR PRECISE DIMENSIONS.) FOR ALL OTHER DIMENSIONS NOT SHOWN BUT REQUIRED FOR TOOL BUILD, SEE MATH MODEL FOR PRECISE TOOL PATH DATA.
  4. THIS PART IS NOT CONTROLLED FOR AUTOMATIC FEEDING.
  5. FOR LEAD LENGTH CALCULATIONS, DISTANCE FROM MATING END OF CONNECTOR TO FRONT OF CABLE CORE IS 13.35±1.7.
  6. WHEN PARTS ARE SHIPPED, THEY MUST BE PACKED IN PLASTIC BAGS OR SHIPPING CONTAINERS LINED WITH PLASTIC LINERS. BAGS OR LINERS MUST BE SEALED TO AVOID ENTRY OF FOREIGN MATTER.
  7. SEALING CODE 3 - DESIGN WILL PASS SALT FOG AND IMMERSION TEST AFTER CONDITIONING AS SPECIFIED IN ESA-644 (WEATHER-PACK), ESA-710 (METRI-PACK), ESA-650 (UNDERHOOD MICRO-PACK), C-4006 (WORLD CONNECTOR), ETC. - WHEN MATED TO MATING PART OR EQUIVALENT.
  8. FOR APPLICATION DATA SEE THE INDIVIDUAL APPLICATION DRAWINGS.
  9. THIS PRODUCT IS NOT CATEGORIZED AS AN APPEARANCE ITEM, MINOR IMPERFECTIONS INCLUDING, BUT NOT LIMITED TO, FLOW MARKS, COLOR BLEMISHES, GATE VESTIGES, AND SOFT FLASH THAT DO NOT AFFECT THE FIT, FORM, OR FUNCTION OF THE PART ARE PERMISSIBLE PER DPNP-4.7-CS-01.
  10. S-60-T LUBEWELL LUBRICANT CAN BE USED AS AN AUXILIARY SUPPORT ON THE CABLE INSTALLATION PROCESS.



VIEW SCALE DOES NOT REFLECT ACTUAL PART SIZE



OPTIONAL CONSTRUCTION



PART NO	REV	N/P	TYPE	CONN BODY	CONN SEAL	CABLE SEAL
13897549	01	AA	104	12020341	12077383	12092676 (BLU)
15404837	01	AC	101	12089269	12077383	12040972 (GREEN)
12103658	A4	-	103	12020341	12077383	12103586 (GRA LT)
12103172	A4	-	101	12103171	12077383	12040972 (GRN)
12092677	A4	-	102	12020341	12077383	12092676 (BLU)
12092449	A4	-	101	12089269	12077383	12066680 (GRA LT)
12085030	A4	-	101	12020341	12077383	12085024 (GRN LT)
12066681	A4	-	101	12020341	12077383	12066680 (GRA LT)
12033769	E4	-	101	12020341	12077383	12040972 (GRN)

SYMBOL DEFINITION	MISSING NUMBERS
THE NUMBER INSIDE THE SYMBOL CORRESPONDS TO THE NUMBER ON THE INSPECTION REPORT FOR THIS DRAWING/PART NUMBER	15
TOTAL NO. OF SYMBOLS ON DRAWING	18
LAST NO. USED	

DATE	STG	REV	N/P	CHG	ZONE	REVISION HISTORY	AUTH	DR	APVD	APVD
20AUG02	R	03	-	-	-	CLEARED REV COLUMN: ALL PARTS - ADDED OPTIONAL CONSTRUCTION FOR LOCK RAMP TO MATING PART INFO	228348	JAA	JAA	JRH
21JUL11	R	04	-	-	-	ALL PARTS - UPDATED PDM ATTRIBUTES: 13897549 - RELEASED	414911	MRC	JAA	SJS
03JAN14	R	05	-	-	-	ALL PARTS - ADDED LUBEWELL LUBRICANT NOTE	424986	JVR	JVM	KRM

14	PROCESS SENSITIVE DIMENSION
DIMENSIONS ENCLOSED IN ( ) INDICATE REFERENCE DIMENSIONS AND NO TOLERANCE LIMITS ARE ESTABLISHED	
UNLESS OTHERWISE SPECIFIED	
THIS DOCUMENT IS IN ACCORDANCE WITH ASME Y14.5M-1994 AS MODIFIED BY THE 2003 GLOBAL DIMENSIONING AND TOLERANCING HANDBOOK - 1997. ALL GEOMETRIC TOLERANCES AND RELATED DATUMS APPLY UNLESS RULE #1 (PREFERRED FORM AT FUNCTION) DOES NOT APPLY. WHEN RELATIONSHIP BETWEEN FEATURES IS ESTABLISHED BY ORIENTATION OR LOCATION TOLERANCES, SEPARATE POSITION CALLOUTS MAY BE BASED SEPARATELY, REGARDLESS OF DATUM REFERENCE. ALL DIMENSIONS ARE IN MILLIMETERS	
THIRD ANGLE PROJECTION	DO NOT SCALE
USE MATH DATA	

DELPHI	
DELPHI CORPORATION	
THRY, MI 4806	
COPYRIGHT 1987 DELPHI CORPORATION AND/OR ITS AFFILIATES. ALL RIGHTS RESERVED.	
THIS DRAWING IS THE PROPERTY OF DELPHI CORPORATION AND CONTAINS DELPHI CONFIDENTIAL INFORMATION. THE REPRODUCTION, DISTRIBUTION AND UTILIZATION OF THIS DOCUMENT OR ITS RELATED CAD DATA, AS WELL AS COMMUNICATION OF ANY CONTENT TO OTHERS, WITHOUT EXPRESS AUTHORIZATION, IS PROHIBITED.	
DATE	22JUN87
DR ROGER SHAUB	25JUN87
APVOC D. RAMUNNO	30JUN87
APVOC R. NAGEL	01JUL87
APVOC A. WINYARD	
APVOC	
SUBSTANCES OF CONCERN AND RECYCLED CONTENT PER DELPHI 13049201	
DRAWING NAME	
TAXI ASM CONN F M/P 630 SLD	
DRAWING NUMBER	
12066697	
SIZE A0	SCALE 2:1
FRAME NO 1 OF 1	SHEET NO 1 OF 1
STG R	REV 05