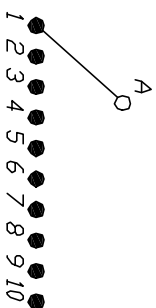


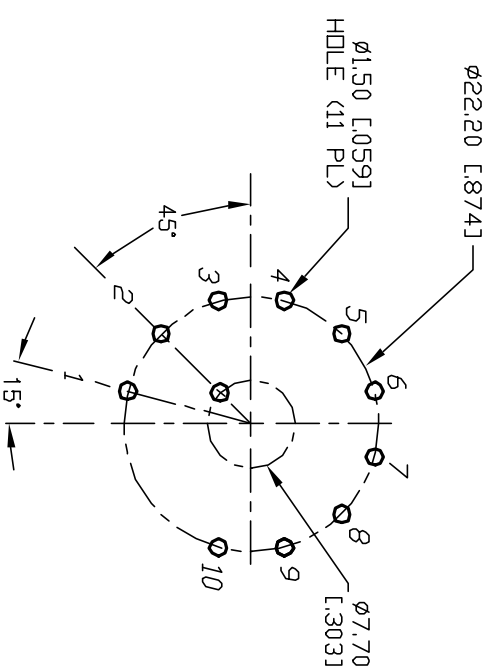
NOTES:

1. ALL DIMENSION IN MM [INCH]
2. GENERAL TOLERANCE: X.X=±0.4
X.XX=±0.25
3. TERM. NOS. FOR REF. ONLY
4. CONTACT RATING SWITCHING: 150mA, 250V AC/DC
350mA, 110V AC/DC
5. CONTACT RATING (NON-SWITCHING) 5A
6. OPERATING FORCE: 425±100 CM/STANDARD
7. OPERATING TEMP: -30° to 85°C
8. CIRCUIT SP: 10 POSITIONS, 30° INDEX.
9. DIELECTRIC STRENGTH 1000V RMS min. @ SEA LEVEL
10. DESIGNATE MAJOR DIMENSIONS
11. SUPPLIED LOCK NUT AND WASHER (NOT SHOWN).

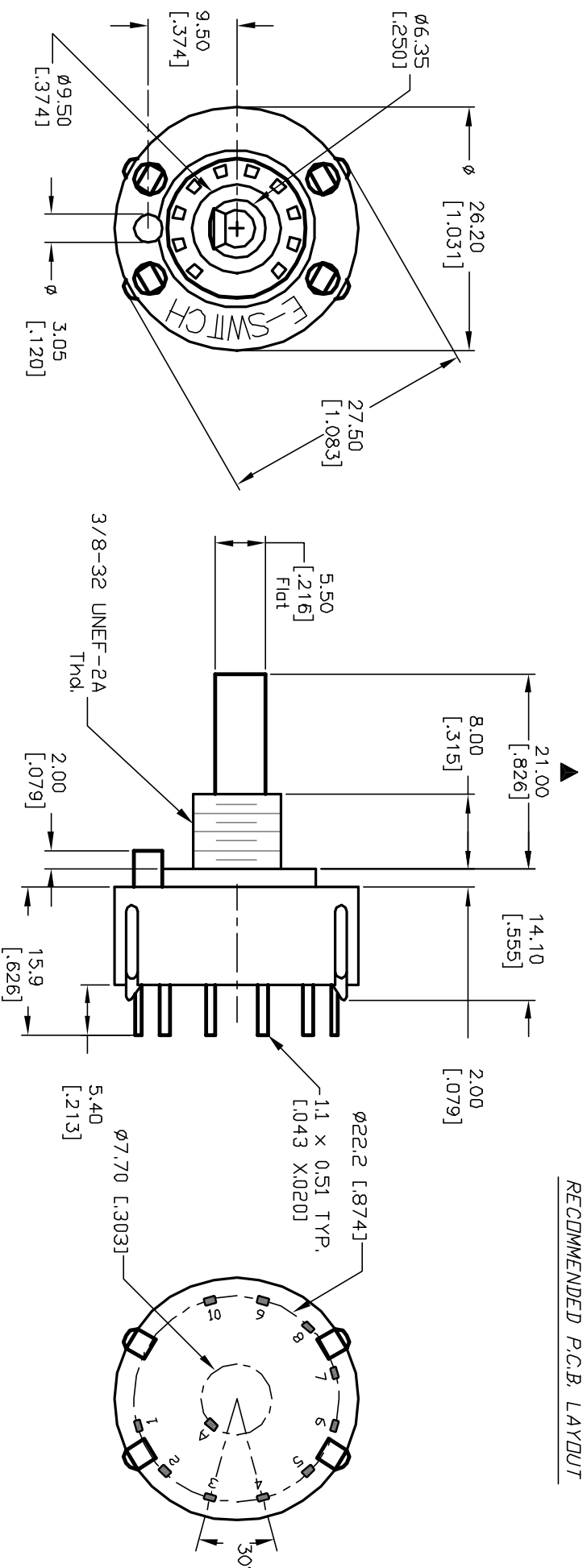


CONTACT CONFIGURATION

Timing: Non-Shorting (BBM)



RECOMMENDED P.C.B. LAYOUT



				TITLE			
				KC-50-A-(13.0mm) 01-N-P-S			
A	12361	RELEASED FOR PRODUCTION	3/7/01	CJB			
REV.	ECN No.	DESCRIPTION	DATE	CHKD			
THE INFORMATION CONTAINED IN THIS DOCUMENT IS PROPRIETARY TO E-SWITCH AND IS NOT TO BE COPIED OR TRANSFERRED							
SCALE			DATE	DR	DWG	REV	
1.5:1			8/12/02	CJB	6530105	A	

Mouser Electronics

Authorized Distributor

Click to View Pricing, Inventory, Delivery & Lifecycle Information:

[E-Switch:](#)

[KC50A13.0NPS](#)