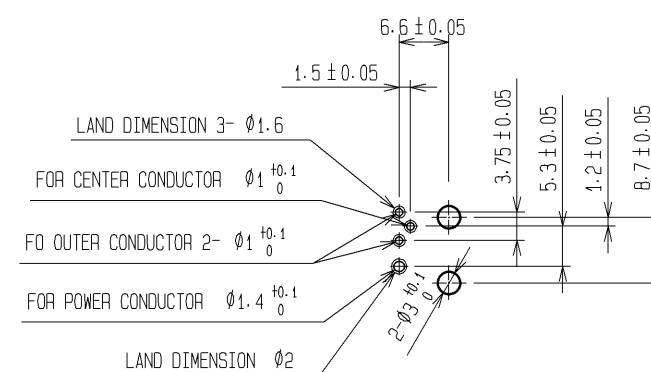
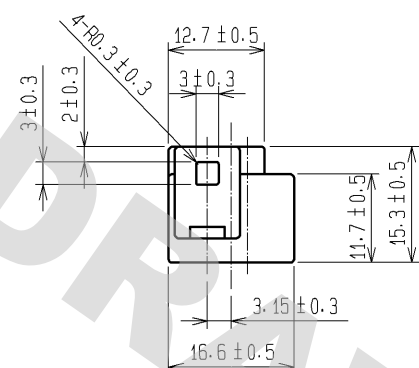
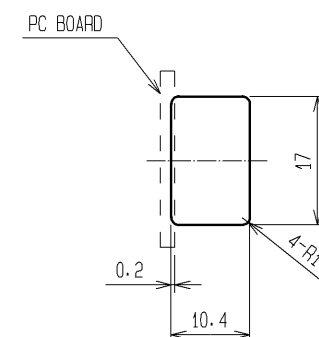
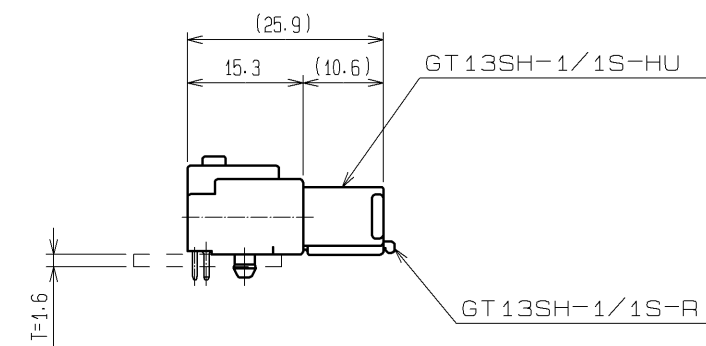
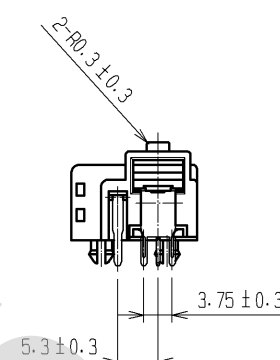
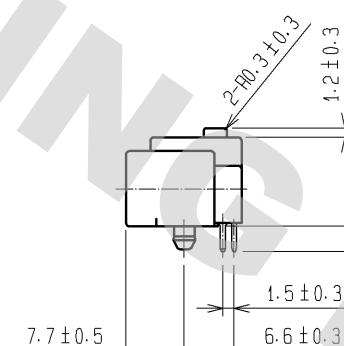
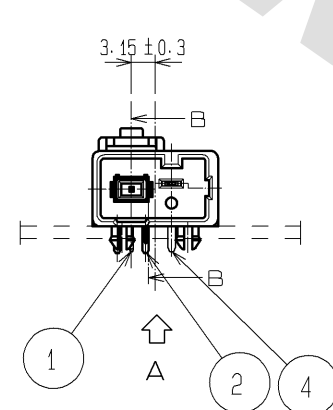
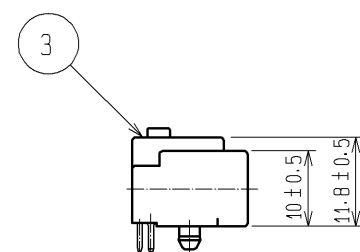


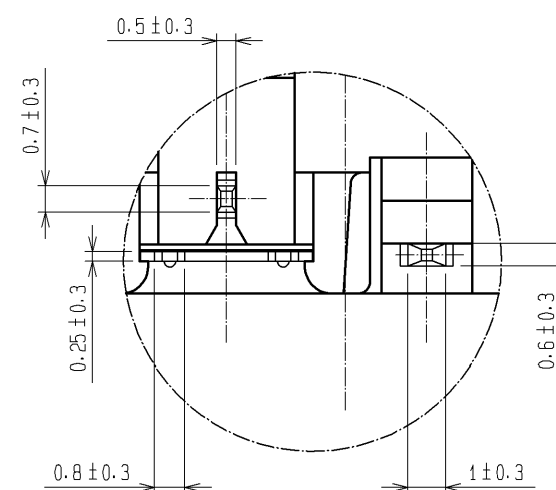
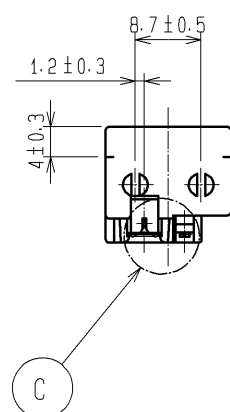
ELV, RoHS COMPLIANT

RECOMMENDED PCB LAYOUT  
(VIEW FROM BOTTOM SURFACE)

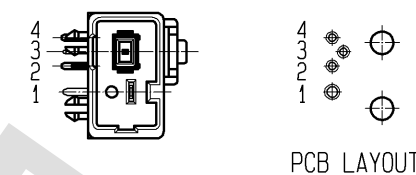
### RECOMMEDED PANEL LAYOUT



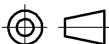



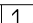
MATED PAIR FOR USE



C(5:1)



### Example of contact numbers

2	Cu Alloy	Tin Plated	4	Cu Alloy	Tin Plated				
1	Cu Alloy	Tin Plated	3	PBT	UL94HB, LIGHT GRAY				
NO.	MATERIAL	FINISH , REMARKS		NO.	MATERIAL	FINISH , REMARKS			
UNITS mm		SCALE 1 : 1		COUNT	DESCRIPTION OF REVISIONS		DESIGNED	CHECKED	DATE
<div>HIROSE ELECTRIC CO., LTD.</div>		APPROVED : AR. SHIRAI		10. 07. 20	DRAWING NO.		EDC3-166029-01		
		CHECKED : MO. OKADA		10. 07. 16	PART NO.		GT13SHA-1/1PP-DS(10)		
		DESIGNED : YS. OCHI		10. 07. 13	CODE NO.		CL763-0057-8-10		
		DRAWN : YS. OCHI		10. 07. 13					
									

# Mouser Electronics

Authorized Distributor

Click to View Pricing, Inventory, Delivery & Lifecycle Information:

[Hirose Electric:](#)

[GT13SHA-1/1PP-DS\(10\)](#)