

## Test Report



Page 1 of 9

Report No. A2250033022101012

Company Name WUXI NCE POWER CO., LTD

shown on Report

Address 6 DIANTENG ROAD.XINWU DISTRICT.WUXI CITY.JANGSU PROVINCE.CHINA

The following sample(s) and sample information was/were submitted and identified by/on the behalf of the applicant

Sample Name TOLL  
Sample Received Date Jan. 15, 2025  
Testing Period Jan. 15, 2025 to Jan. 17, 2025

**Test Requested** As specified by client, to test Lead (Pb), Cadmium (Cd), Mercury (Hg), Hexavalent Chromium (Cr(VI)), Polybrominated Biphenyls (PBBs), Polybrominated Diphenyl Ethers (PBDEs), Phthalates (DBP, BBP, DEHP, DIBP), Fluorine (F), Chlorine (Cl), Bromine (Br), Iodine (I), Polycyclic Aromatic Hydrocarbons (PAHs) in the submitted sample(s).

**Test Method** Please refer to the following page(s).

**Test Result(s)** Please refer to the following page(s).

## Conclusion

Tested Sample	According to standard/directive	Result
Submitted Sample	RoHS Directive 2011/65/EU with amendment (EU) 2015/863	PASS
	AfPS GS 2019:01 PAK, Category 3	PASS



Approved by

*Chen Kaimin*

Chen kaimin

Lab Manager

Date

Jan. 17, 2025

No. R780117355

Centre Testing International Pinbiao(Shanghai) Co., Ltd.

No.1351, Wanfang Road, Minhang District, Shanghai, China

# Test Report

**Report No.** A2250033022101012

Page 2 of 9

**Test Method**

Test Item(s)	Test Method	Measured Equipment(s)
Lead (Pb)	IEC 62321-5:2013	ICP-OES
Cadmium (Cd)	IEC 62321-5:2013	ICP-OES
Mercury (Hg)	IEC 62321-4:2013+AMD1:2017 CSV	ICP-OES
Hexavalent Chromium (Cr(VI))	IEC 62321-7-2:2017 and/or determination of Total Chromium by IEC 62321-5:2013	UV-Vis/ICP-OES
Polybrominated Biphenyls (PBBs)	IEC 62321-12:2023	GC-MS
Polybrominated Diphenyl Ethers (PBDEs)	IEC 62321-12:2023	GC-MS
Phthalates (DBP, BBP, DEHP, DIBP)	IEC 62321-12:2023	GC-MS
Fluorine (F)	EN 14582:2016	IC
Chlorine (Cl)	EN 14582:2016	IC
Bromine (Br)	EN 14582:2016	IC
Iodine (I)	EN 14582:2016	IC
Polycyclic Aromatic Hydrocarbons (PAHs)	AfPS GS 2019:01 PAK	GC-MS

## Test Report

Report No. A2250033022101012

Page 3 of 9

## Test Result(s)

Tested Item(s)	Result	MDL	Limit
	012		
Lead (Pb)	17282 mg/kg*	2 mg/kg	1000 mg/kg
Cadmium (Cd)	N.D.	2 mg/kg	100 mg/kg
Mercury (Hg)	N.D.	2 mg/kg	1000 mg/kg
Hexavalent Chromium (Cr(VI))	N.D.	8 mg/kg	1000 mg/kg
Tested Item(s)	Result	MDL	Limit
	012		
Polybrominated Biphenyls (PBBs)			
Monobromobiphenyl	N.D.	25 mg/kg	1000 mg/kg
Dibromobiphenyl	N.D.	25 mg/kg	
Tribromobiphenyl	N.D.	25 mg/kg	
Tetrabromobiphenyl	N.D.	25 mg/kg	
Pentabromobiphenyl	N.D.	25 mg/kg	
Hexabromobiphenyl	N.D.	25 mg/kg	
Heptabromobiphenyl	N.D.	25 mg/kg	
Octabromobiphenyl	N.D.	25 mg/kg	
Nonabromobiphenyl	N.D.	25 mg/kg	
Decabromobiphenyl	N.D.	25 mg/kg	
Tested Item(s)	Result	MDL	Limit
	012		
Polybrominated Diphenyl Ethers (PBDEs)			
Monobromodiphenyl ether	N.D.	25 mg/kg	1000 mg/kg
Dibromodiphenyl ether	N.D.	25 mg/kg	
Tribromodiphenyl ether	N.D.	25 mg/kg	
Tetrabromodiphenyl ether	N.D.	25 mg/kg	
Pentabromodiphenyl ether	N.D.	25 mg/kg	
Hexabromodiphenyl ether	N.D.	25 mg/kg	
Heptabromodiphenyl ether	N.D.	25 mg/kg	
Octabromodiphenyl ether	N.D.	25 mg/kg	
Nonabromodiphenyl ether	N.D.	25 mg/kg	
Decabromodiphenyl ether	N.D.	25 mg/kg	

# Test Report

**Report No.** A2250033022101012

Page 4 of 9

**Test Result(s)**

Tested Item(s)	Result	MDL	Limit
	012		
Phthalates (DBP, BBP, DEHP, DIBP)			
Dibutyl phthalate (DBP) CAS#:84-74-2	N.D.	50 mg/kg	1000 mg/kg
Butyl benzyl phthalate (BBP) CAS#:85-68-7	N.D.	50 mg/kg	1000 mg/kg
Di-(2-ethylhexyl) phthalate (DEHP) CAS#:117-81-7	N.D.	50 mg/kg	1000 mg/kg
Diisobutyl phthalate (DIBP) CAS#:84-69-5	N.D.	50 mg/kg	1000 mg/kg
Tested Item(s)	Result	MDL	
	012		
Fluorine (F)	N.D.		10 mg/kg
Chlorine (Cl)	N.D.		10 mg/kg
Bromine (Br)	N.D.		10 mg/kg
Iodine (I)	N.D.		10 mg/kg
Tested Item(s)	Result	MDL	
	012		
Polycyclic Aromatic Hydrocarbons (PAHs)			
Naphthalene	N.D.		0.2 mg/kg
Phenanthrene	N.D.		0.2 mg/kg
Anthracene	N.D.		0.2 mg/kg
Fluoranthene	N.D.		0.2 mg/kg
Pyrene	N.D.		0.2 mg/kg
Chrysene	N.D.		0.2 mg/kg
Benzo(a)anthracene	N.D.		0.2 mg/kg
Benzo(b)fluoranthene	N.D.		0.2 mg/kg
Benzo(k)fluoranthene	N.D.		0.2 mg/kg
Benzo(j)fluoranthene	N.D.		0.2 mg/kg
Benzo(a)pyrene	N.D.		0.2 mg/kg
Benzo(e)pyrene	N.D.		0.2 mg/kg
Dibenzo(a,h)anthracene	N.D.		0.2 mg/kg
Benzo(g,h,i)perylene	N.D.		0.2 mg/kg
Indeno(1,2,3-cd)pyrene	N.D.		0.2 mg/kg
Sum (Phenanthrene, Anthracene, Fluoranthene, Pyrene)	N.D.		/
Sum 15 PAHs	N.D.		/

# Test Report

**Report No.** A2250033022101012

Page 5 of 9

**Sample/Part Description**

No.	CTI Sample ID	Description
1	012	Electronic components(Tested as a whole)

**Remark:**     **The sample(s) had been dissolved totally tested for Lead, Cadmium, Mercury.**  
- The sample(s) was tested as a whole, because it's impossible to disassemble or separate it by current equipment and technology. The result(s) shown on this report may be different from the content of any homogeneous material.  
-\*= According to the client's statement, lead mainly comes from the high melting temperature type solders. Lead in high melting temperature type solders (i.e. lead- based alloys containing 85 % by weight or more lead) is exempted from the restriction, with reference to EU Directive 2011/65/EU annex III Exemption Applications 7(a).  
-MDL = Method Detection Limit  
-N.D. = Not Detected (<MDL )  
-mg/kg = ppm = parts per million  
-1000 mg/kg = 0.1%

# Test Report

Report No. A2250033022101012

Page 6 of 9

**Maximum PAHs limits (mg/kg) for the materials with relevant contact/grip and operating surfaces that are to be categorised based on the results of the risk assessment**

Parameters	Category 1	Category 2		Category 3	
	Materials intended to be placed in the mouth or materials in toys according to Directive 2009/48/EC or materials for the use by children up to 3 years of age coming into long-term contact with skin (more than 30s) during the intended use	Materials not covered by category 1, coming into long-term contact (more than 30s) or short-term repetitive contact** with skin during the intended or foreseeable use		Materials not covered by category 1 nor by category 2, coming into short-term contact (up to 30s) with skin during the intended or foreseeable use	
		Use by children (< 14 years) (include both active and passive direct contact)	Other consumer products	Use by children (< 14 years) (include both active and passive direct contact)	Other consumer products
Benzo(a)pyrene	< 0.2	< 0.2	< 0.5	< 0.5	< 1
Benzo(e)pyrene	< 0.2	< 0.2	< 0.5	< 0.5	< 1
Benzo(a)anthracene	< 0.2	< 0.2	< 0.5	< 0.5	< 1
Benzo(b)fluoranthene	< 0.2	< 0.2	< 0.5	< 0.5	< 1
Benzo(j)fluoranthene	< 0.2	< 0.2	< 0.5	< 0.5	< 1
Benzo(k)fluoranthene	< 0.2	< 0.2	< 0.5	< 0.5	< 1
Chrysene	< 0.2	< 0.2	< 0.5	< 0.5	< 1
Dibenzo(a,h)anthracene	< 0.2	< 0.2	< 0.5	< 0.5	< 1
Benzo(g,h,i)perylene	< 0.2	< 0.2	< 0.5	< 0.5	< 1
Indenol(1,2,3-cd)pyrene	< 0.2	< 0.2	< 0.5	< 0.5	< 1
Phenanthrene, Anthracene, Fluoranthene, Pyrene	< 1 Sum	< 5 Sum	< 10 Sum	< 20 Sum	< 50 Sum
Naphthalene	< 1	< 2		< 10	
Sum 15 PAHs	< 1	< 5	< 10	< 20	< 50

\*\* Definition "short-term repetitive contact" taken from REACH Annex XVII entry 50 amendment (REGULATION (EU) No.1272/2013)

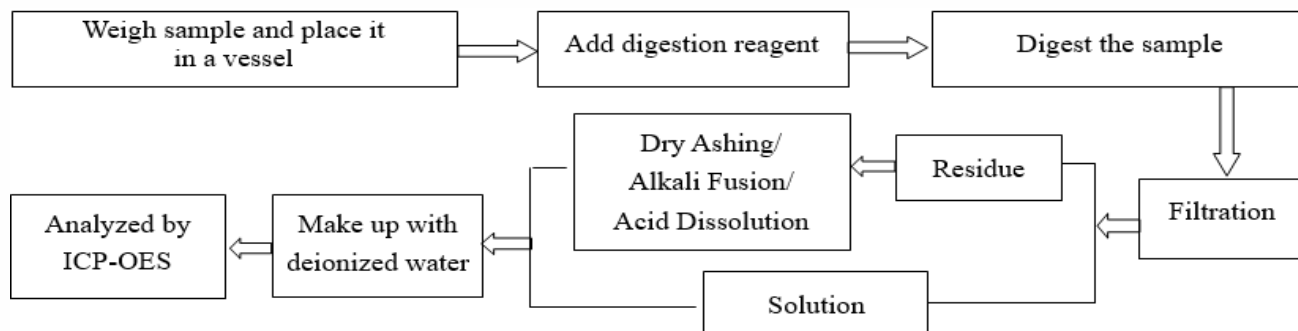
# Test Report

Report No. A2250033022101012

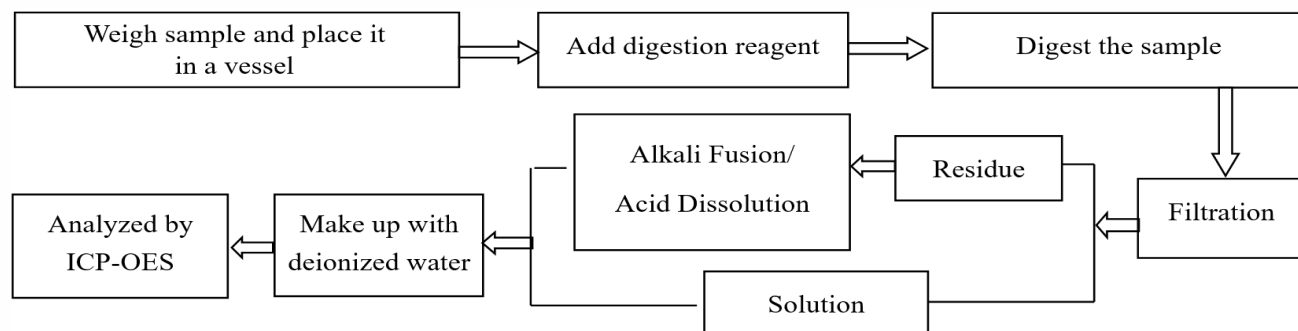
Page 7 of 9

## Test Process

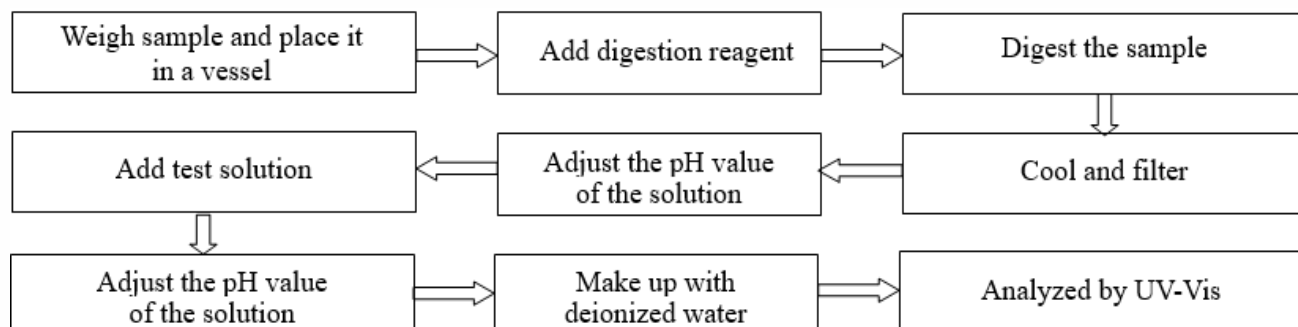
### 1. Lead (Pb), Cadmium (Cd), Chromium (Cr)



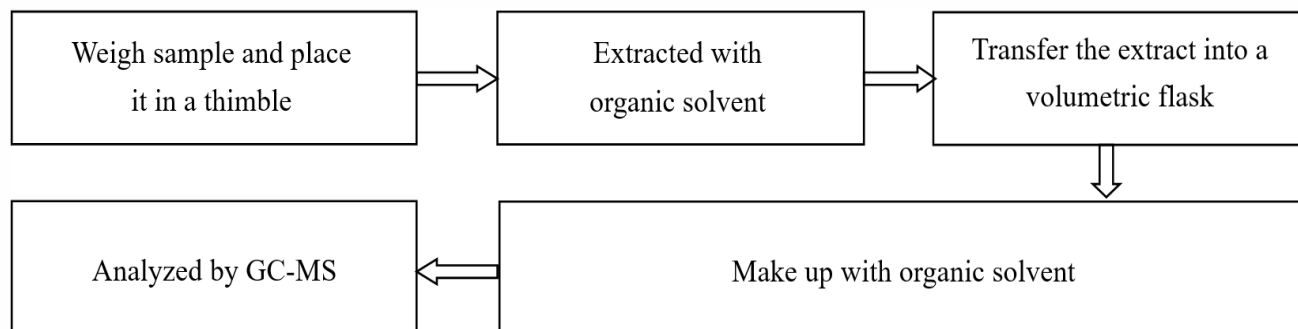
### 2. Mercury (Hg)



### 3. Hexavalent Chromium (Cr(VI))



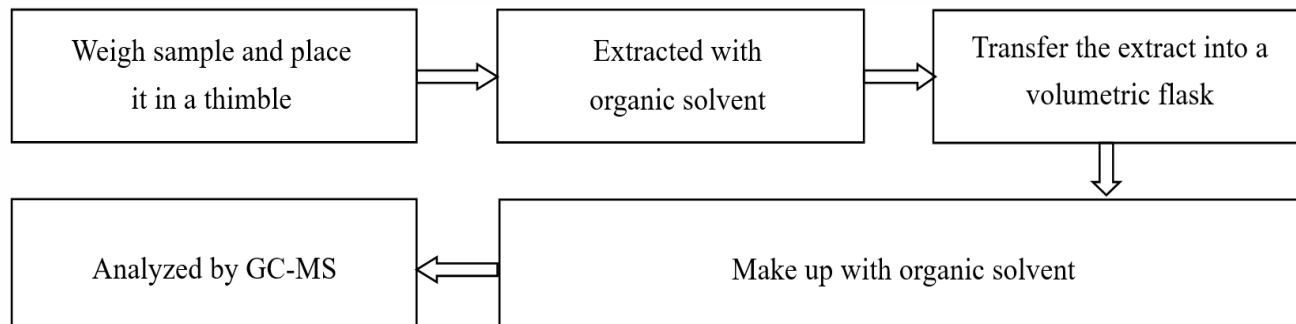
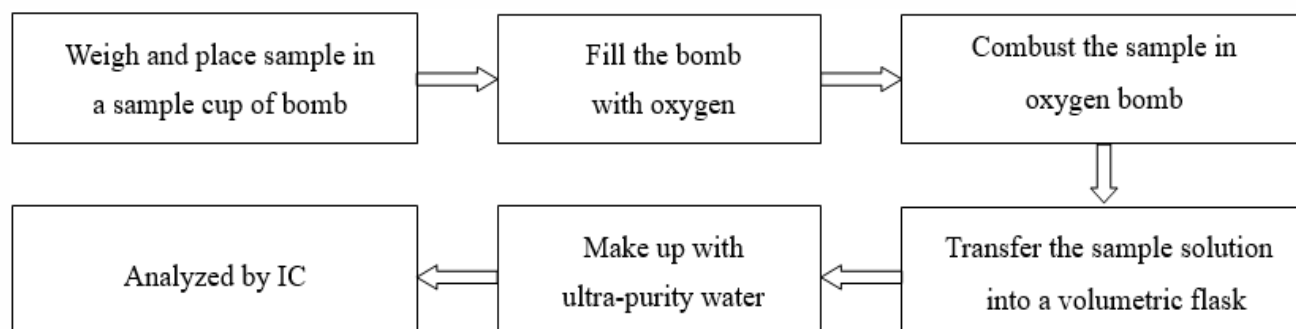
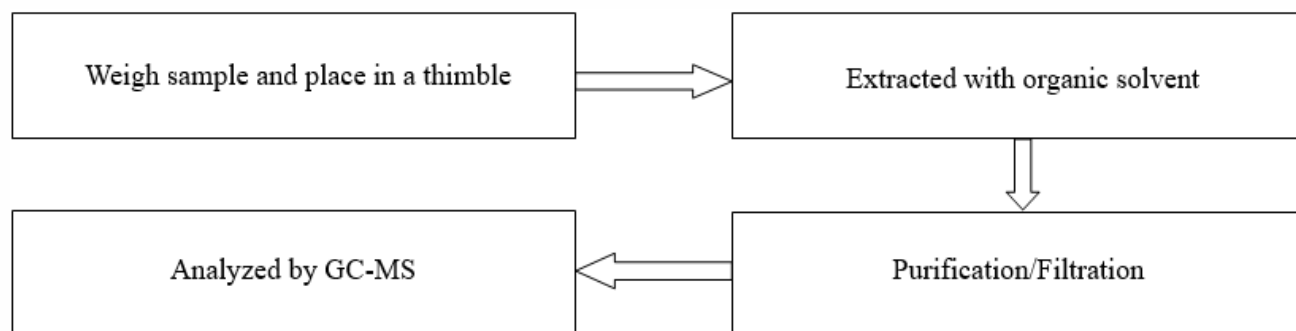
### 4. Polybrominated Biphenyls (PBBs), Polybrominated Diphenyl Ethers (PBDEs)



# Test Report

Report No. A2250033022101012

Page 8 of 9

**5. Phthalates (DBP, BBP, DEHP, DIBP)****6. Fluorine (F), Chlorine (Cl), Bromine (Br), Iodine (I)****7. Polycyclic Aromatic Hydrocarbons (PAHs)**

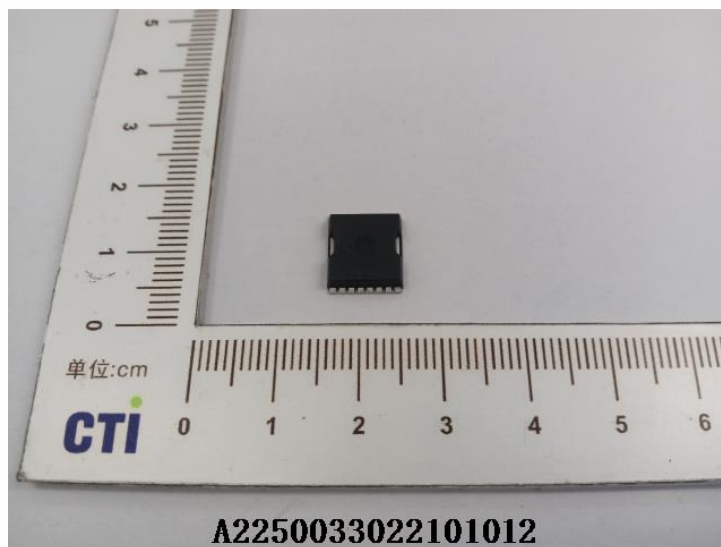


# Test Report

Report No. A2250033022101012

Page 9 of 9

## Photo(s) of the sample(s)



### Statement:

1. This report is considered invalid without approved signature, special seal and the seal on the perforation;
2. The Company Name shown on Report and Address, the sample(s) and sample information was/were provided by the applicant who should be responsible for the authenticity which CTI hasn't verified;
3. The result(s) shown in this report refer(s) only to the sample(s) tested;
4. Unless otherwise stated, the decision rule for conformity reporting is based on Binary Statement for Simple Acceptance Rule (w=0) stated in ILAC-G8:09/2019 / CNAS-GL015:2022;
5. Without written approval of CTI, this report can't be reproduced except in full;
6. In case of any discrepancy between the English version and Chinese version of the testing reports (if generated), the Chinese version shall prevail.

\*\*\* End of report \*\*\*

## Appendix

### Client Reference Information

TOLL8、TOLL-8L、sTOLL、sTOLL-5L

### Statement:

1. The Appendix Information was/were provided by the applicant who should be responsible for the authenticity which CTI hasn't verified.
2. The Appendix Information is/are the supplement(s) for the Report A2250033022101012.