

Very High Energy Gas Discharge Tube Arrestor

Description

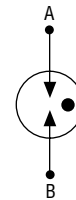
DXGT2R3019 Series Are rated at 200 kA maximum on an 8/20 μ s waveform, providing a volume and space-saving solution for high-density and space-restricted applications that require a very high surge current. This series is available in various lead shapes to fit a variety of configuration requirements.



Features

- Fast response time
- Wide temperature range
- High surge current rating
- Low capacitance and insertion loss
- Stable performance throughout life
- Small surface mount package
- RoHS compliant*

Electrode GDT Graphical Symbol



Note: Gas discharge tubes are bidirectional and non-polarized.

Applications

- Surge Protective Devices (SPDs)
- Power systems
- Industrial equipment

Packaging

20 pieces /box.

Very High Energy Gas Discharge Tube Arrestor

Electrical Characteristics

ModelName	DC Breakdown Voltage (V)	Maximum Impulse Breakdown Voltage (V)	Maximum Impulse Discharge Current (8/20 μ s) (KA)		Follow Current at 50/60Hz (A)	Max Continuous Operating Voltage 50/60Hz (V)	Minimum Insulation Resistance (G Ω)	Breakdown time (ns)
	100V/s	1.2/50us 6KV	1 time	10 times			Note 2	
2R3019-350	280-420	1000	200	100	100	150	1	<100
2R3019-600	480-720	1400	200	100	100	255	1	<100
2R3019-1500	1200-1800	2400	200	100	100	275	1	<100

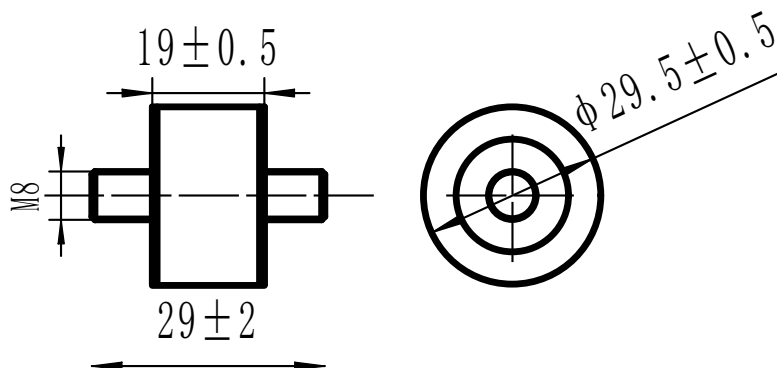
Note2: DC Breakdown Voltage DC Measuring Voltage

90V	50V
150-350V	100V
420-2500V	250V

Test Methods per ITU-T K.12, IEEE C62.31 and IEC 61643-311 GDT standards.

Model Name	Impulse Discharge Current (10/350 μ s) (KA)	Impulse Discharge Current (10/350 μ s & 8/20 μ s) (KV)	Maximum Capacitance (pf)
			1MHZ
3019- 350	60	6	10
3019- 600	60	6	10
3019- 1500	25	6	10

Product Dimensions



Package :
Quantity:20pcs/Plasticbox