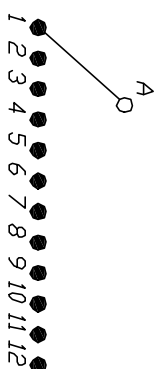
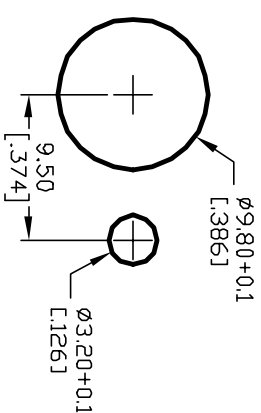


NOTES:

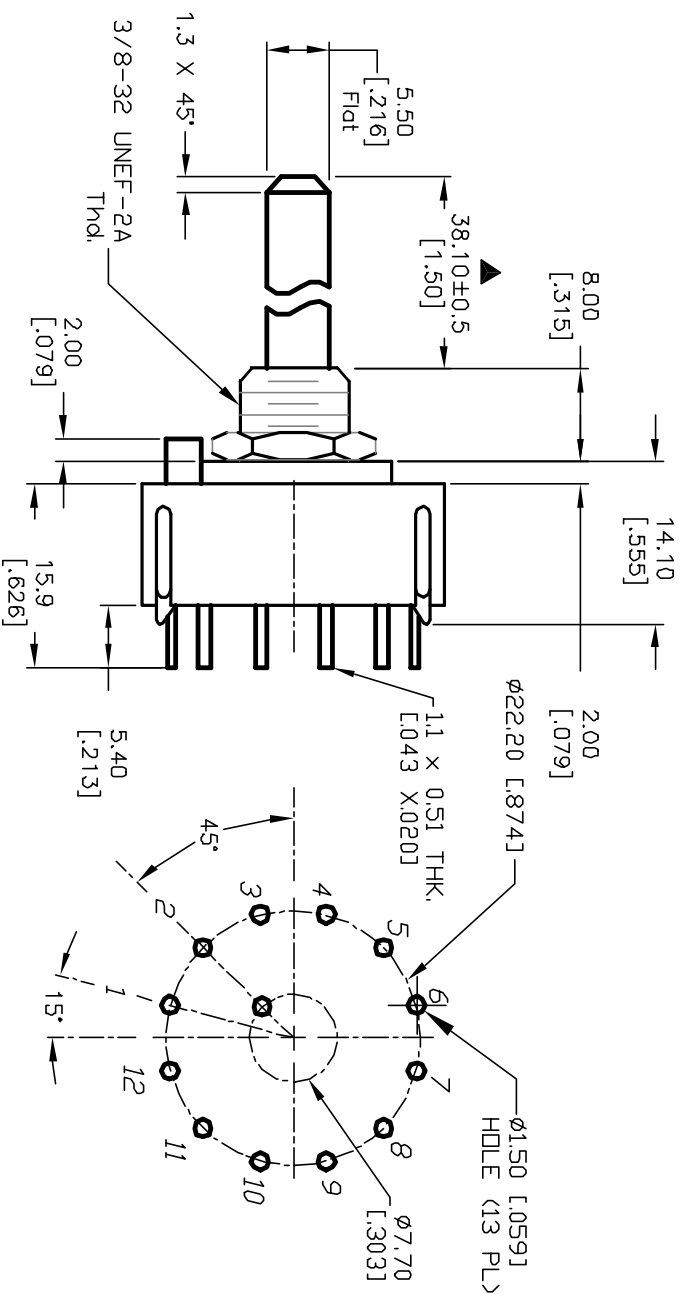
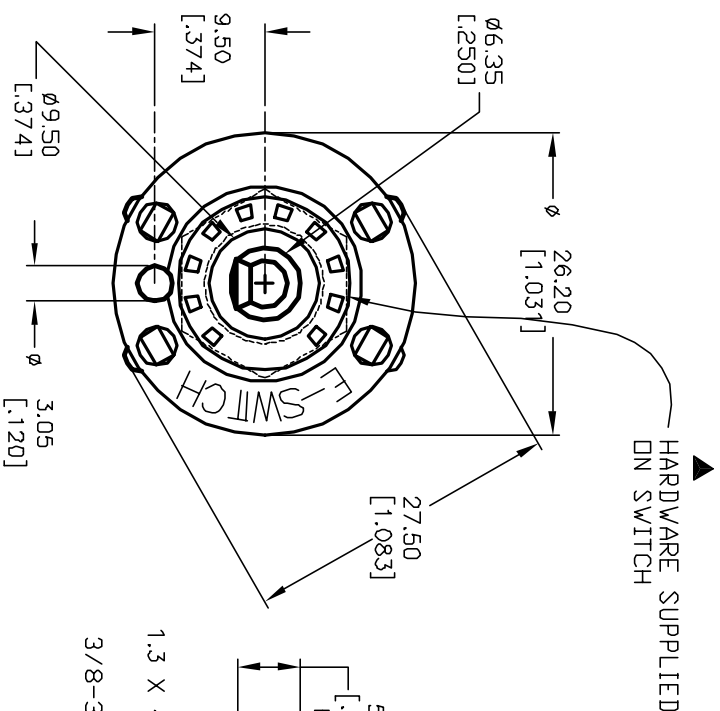
1. ALL DIMENSION IN MM [INCH]
2. GENERAL TOLERANCE: $X.X = \pm 0.4$
 $X.XX = \pm 0.25$
3. TERM. NOS. FOR REF. ONLY
4. CONTACT RATING SWITCHING: 150mA, 250V AC/DC
350mA, 110V AC/DC
5. CONTACT RATING (NON-SWITCHING) 5A
6. OPERATING FORCE: 425 \pm 100 CM/STANDARD
7. OPERATING TEMP: -30 $^{\circ}$ to 85 $^{\circ}$ C
8. CIRCUIT SP: 12 POSITIONS, 30 $^{\circ}$ INDEX.
9. DIELECTRIC STRENGTH 1000V RMS min. @ SEA LEVEL
10. DESIGNATE MAJOR DIMENSIONS
11. HARDWARE SUPPLIED ON SWITCH - SEE BELOW
STOP RING, LOCKWASHER, & HEXNUT



CONTACT CONFIGURATION
Timing (BBM) Non shorting



RECOMMENDED PANEL MOUNT
SCALE 2X



<div> <div> E-SWITCH® </div> <div> KC-52-A (38.1mm)-01-N-P-S </div> </div>				
TITLE				
SCALE	DATE	DR	DWG	REV
1.5:1	7/13/01	CJB	G510342	C

C	12821	REVISED NOTE 11	3/3/03	CJB
B	12249	REV PART DESC. PER CATALOG	6/19/02	CJB
A	11565	RELEASED FOR PRODUCTION	7/13/01	CJB
REV.	ECN No.	DESCRIPTION	DATE	CHKD

THE INFORMATION CONTAINED IN THIS DOCUMENT IS PROPRIETARY TO E-SWITCH AND IS NOT TO BE COPIED OR TRANSFERRED

Mouser Electronics

Authorized Distributor

Click to View Pricing, Inventory, Delivery & Lifecycle Information:

[E-Switch:](#)

[KC52A3801NPS](#)