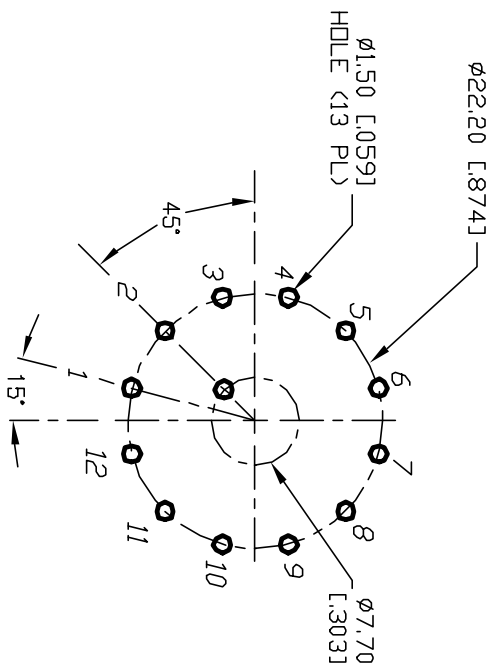
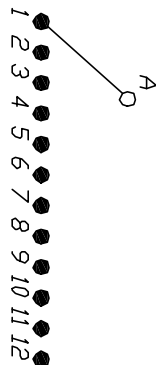
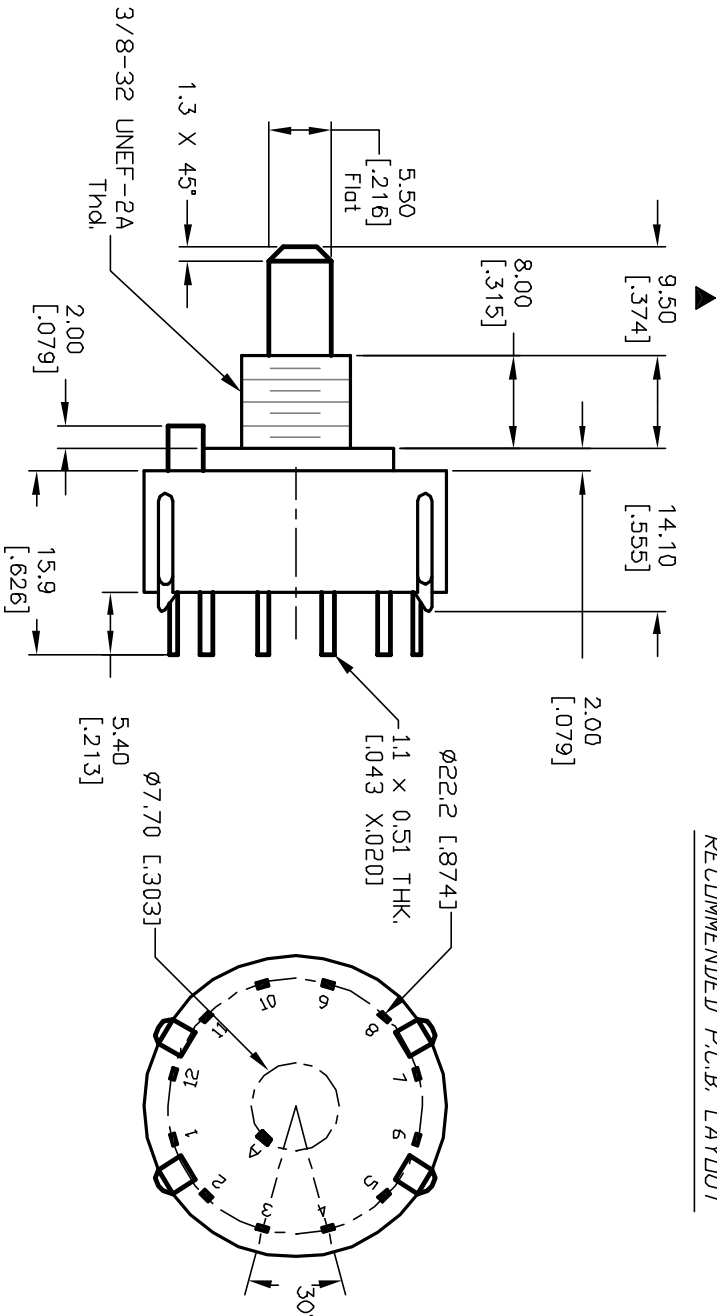
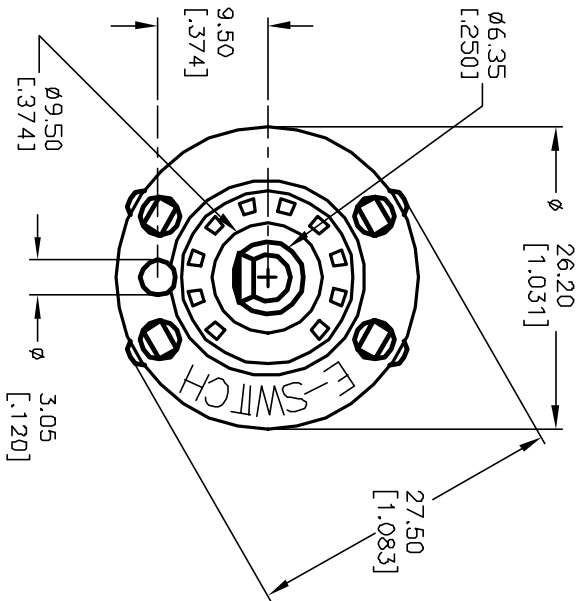


NOTES:

1. ALL DIMENSION IN MM [INCH]
2. GENERAL TOLERANCE:  $X.X=\pm 0.4$   
 $X.XX=\pm 0.25$
3. TERM. NOS. FOR REF. ONLY
4. CONTACT RATING SWITCHING: 150mA, 250V AC/DC  
350mA, 110V AC/DC
5. CONTACT RATING (NON-SWITCHING) 5A
6. CONTACT MATERIAL: Silver over Copper Alloy
7. OPERATING FORCE:  $425\pm 100$  CM/STANDARD
8. OPERATING TEMP.:  $-30^{\circ}$  to  $85^{\circ}\text{C}$
9. CIRCUIT SP.: 12 POSITIONS,  $30^{\circ}$  INDEX, CONTINUOUS ROTATION
10. DIELECTRIC STRENGTH 1000V RMS min. @ SEA LEVEL
11. DESIGNATE MAJOR DIMENSIONS
12. LOCK NUT AND WASHER NOT SHOWN.



RECOMMENDED P.C.B. LAYOUT



E-SWITCH®			
TITLE			
C	12220	NEW PART DESC. PER CATALOG	6/11/02
B	11615	REVISED PART DESCRIPTION	8/15/01
REV.	ECN No.	DESCRIPTION	DATE
THE INFORMATION CONTAINED IN THIS DOCUMENT IS PROPRIETARY TO E-SWITCH AND ITS NOT TO BE COPIED OR TRANSFERRED			
SCALE		DATE	DR
1.5:1		3/13/01	CJB
DATE		DR	DWG
3/13/01		CJB	G510531
REV		REV	C

# Mouser Electronics

Authorized Distributor

Click to View Pricing, Inventory, Delivery & Lifecycle Information:

[E-Switch:](#)

[KC10A9.501SPS](#)