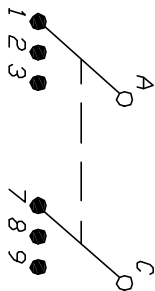
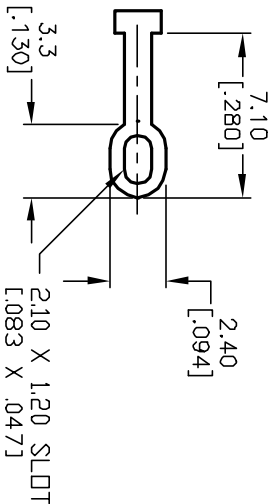


NOTES:

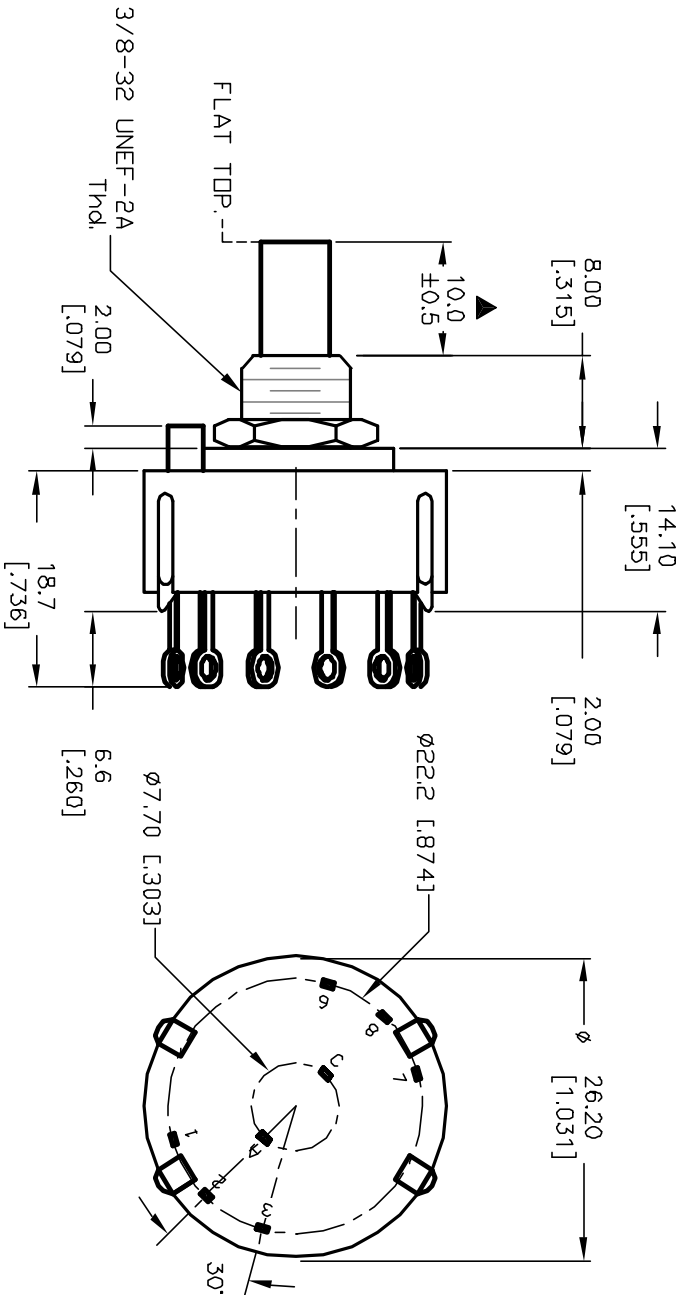
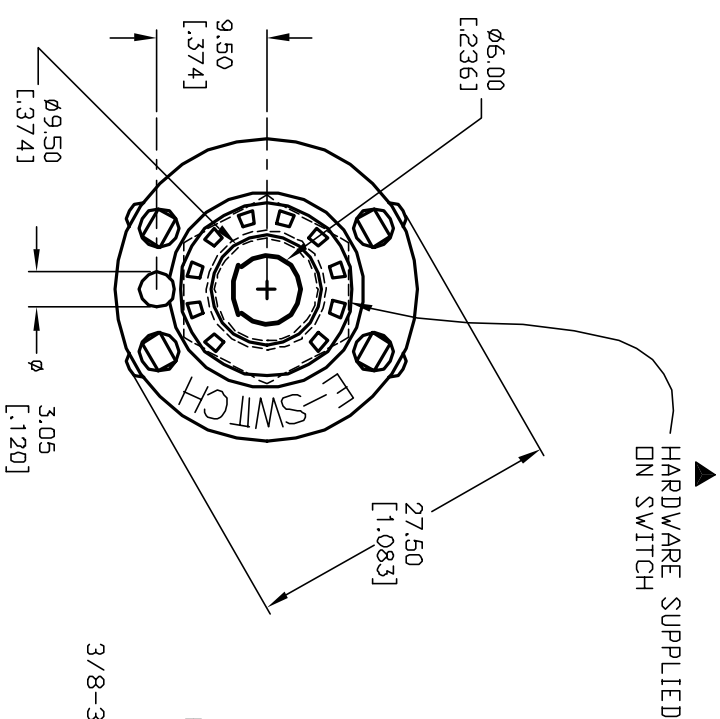
1. ALL DIMENSION IN MM [INCH]
2. GENERAL TOLERANCE:  $X.X=\pm 0.4$   
 $X.XX=\pm 0.25$
3. TERM. NOS. FOR REF. ONLY
4. CONTACT RATING SWITCHING: 150mA, 250V AC/DC  
350mA, 110V AC/DC
5. CONTACT RATING (NON-SWITCHING) 5A
6. CONTACT MATERIAL: SILVER OVER COPPER ALLOY
7. OPERATING FORCE:  $425\pm 100$  CM/STANDARD
8. OPERATING TEMP:  $-30^{\circ}$  to  $85^{\circ}\text{C}$
9. CIRCUIT DP: 3 POSITIONS,  $30^{\circ}$  INDEX.
10. DIELECTRIC STRENGTH 1000V RMS min. @ SEA LEVEL
11. DESIGNATE MAJOR DIMENSIONS
12. SUPPLIED HARDWARE: LOCK NUT AND WASHER (NOT SHOWN).



CONTACT CONFIGURATION  
Timing: Non-Shorting



TERMINATION DETAIL  
SCALE 2X



<div>E-SWITCH®</div>				
TITLE				
KC-23B (10.0mm) 01-N-L-S				
SCALE				
1.5:1				
DATE		DR		
12/20/02		CJB		
DATE		DWG		
12/20/02		G510210		
REV		B		

THE INFORMATION CONTAINED IN THIS DOCUMENT IS PROPRIETARY TO E-SWITCH AND IS NOT TO BE COPIED OR TRANSFERRED				
REV.	ECN No.	DESCRIPTION	DATE	CHKD
A	12651	RELEASED FOR PRODUCTION	12/20/02	CJB
B	12821	REVISE NOTE 12	3/3/03	CJB

# Mouser Electronics

Authorized Distributor

Click to View Pricing, Inventory, Delivery & Lifecycle Information:

[E-Switch:](#)

[KC23B10.01NLS](#)