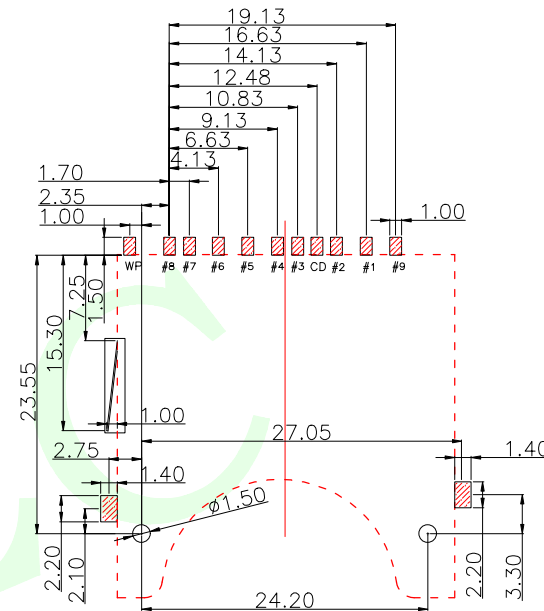
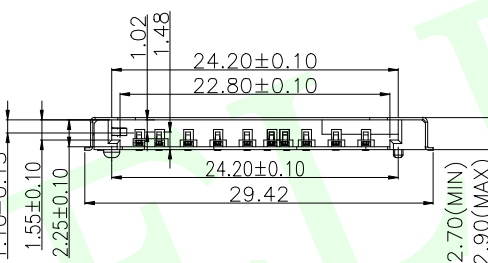
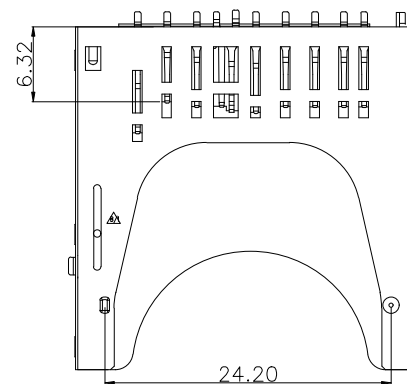
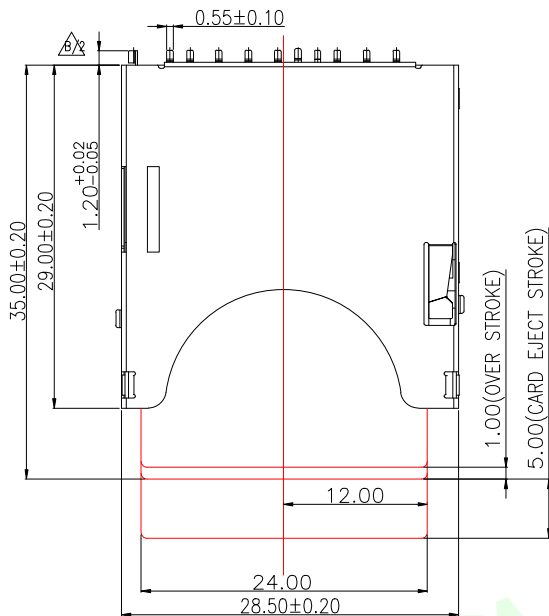
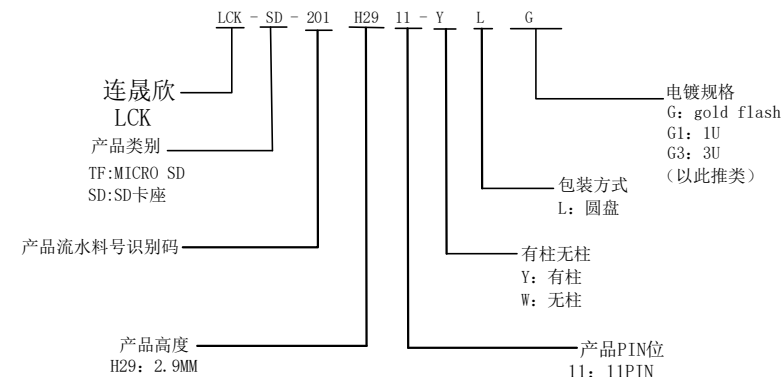


RoHS Compliant



RECOMMENDED PCB LAYOUT
GENERAL TOLERANCE ±0.05

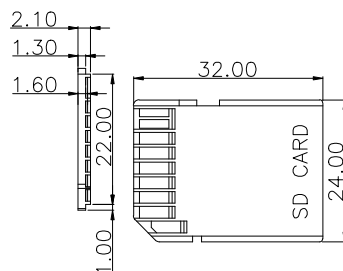
产品采购完整示意图: LCK-SD-201H2911-YLG



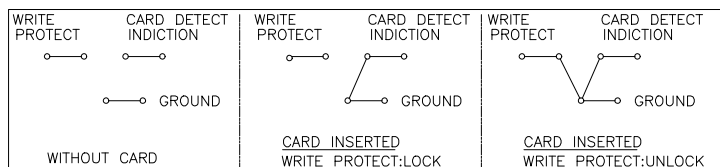
NOTES:

- 1.MATERIAL:
HOUSING: HIGH TEMPERATURE THERMOPLASTIC
UL94V_0,COLOR:BLACK.
CONTACT: COPPER ALLOYS.
COVER: COPPER ALLOYS OR STEEL.
- 2.PLATING:
UNDERPLATE: NICKEL.
CONTACT AREA: GOLD OVER NICKEL.
SOLDER AREA: TIN OVER NICKEL.
- 3.MULTIMEDIA CARD COMPATIBLE

PIN NO.	NAME	TYPE	DESCRIPTION
#1	CD/DAT3	I/O/PP	CARD DETECT/DATA LINE(BIT3)
#2	CMD	PP	COMMAND/RESPONSE
#3	VSS1	S	SUPPLY VOLTAGE GROUND
#4	VDD	S	SUPPLY VOLTAGE
#5	CLK	I	CLOCK
#6	VSS2	S	SUPPLY VOLTAGE GROUND
#7	DAT0	I/O/PP	DATA LINE(BIT 0)
#8	DAT1	I/O/PP	DATA LINE(BIT 1)
#9	DAT2	I/O/PP	DATA LINE(BIT 2)



CIRCUIT:



MEASURE POINT:
QUADRANT POINT
TANGENCY POINT
INTERSECTION POINT

QP
TP
IP

UNLESS OTHERWISE
SPECIFIED, TOLERANCE:

X. ±0.25
X.x ±0.20
X.xx ±0.15
ANGULAR ±3°

DESIGN	Andy	DATE	2014.12.24	TITLE:
CHECKED		DATE		SD CARD CONN PUSH SMT 2.9H外焊带往
APPROVED		DATE		
PART NO:	LCK-SD-201H2911-YLG	REV:	04	SCALE: 1:1
DRAWING NO:	102022111	SIZE:	A4	SHEET: 1/1