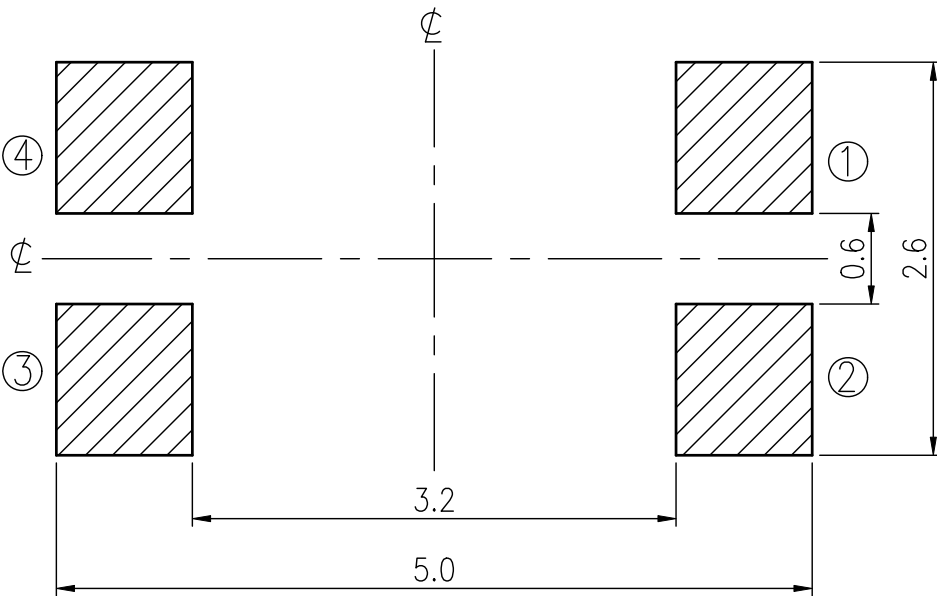
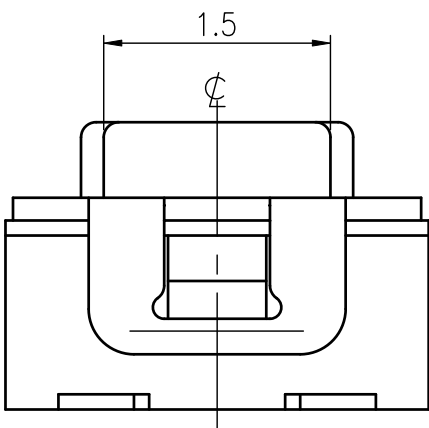
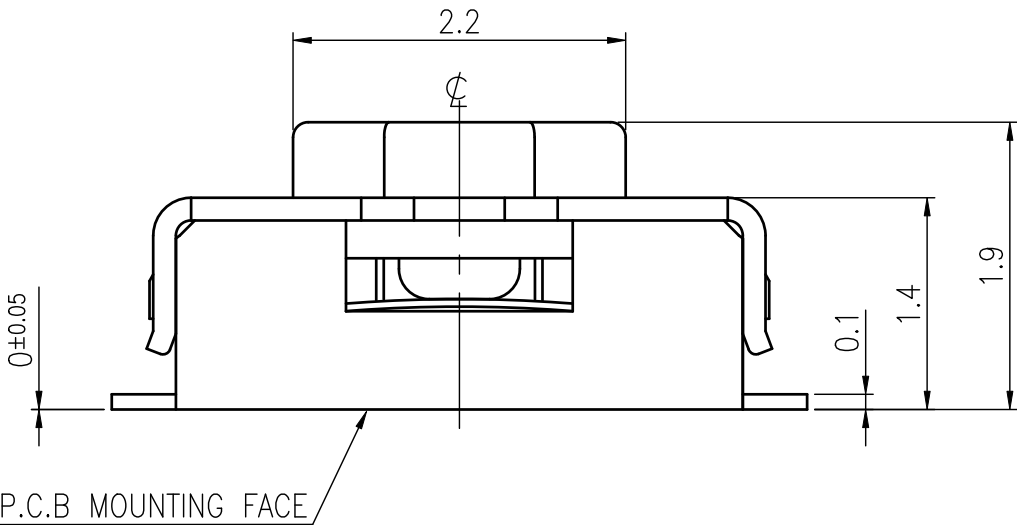
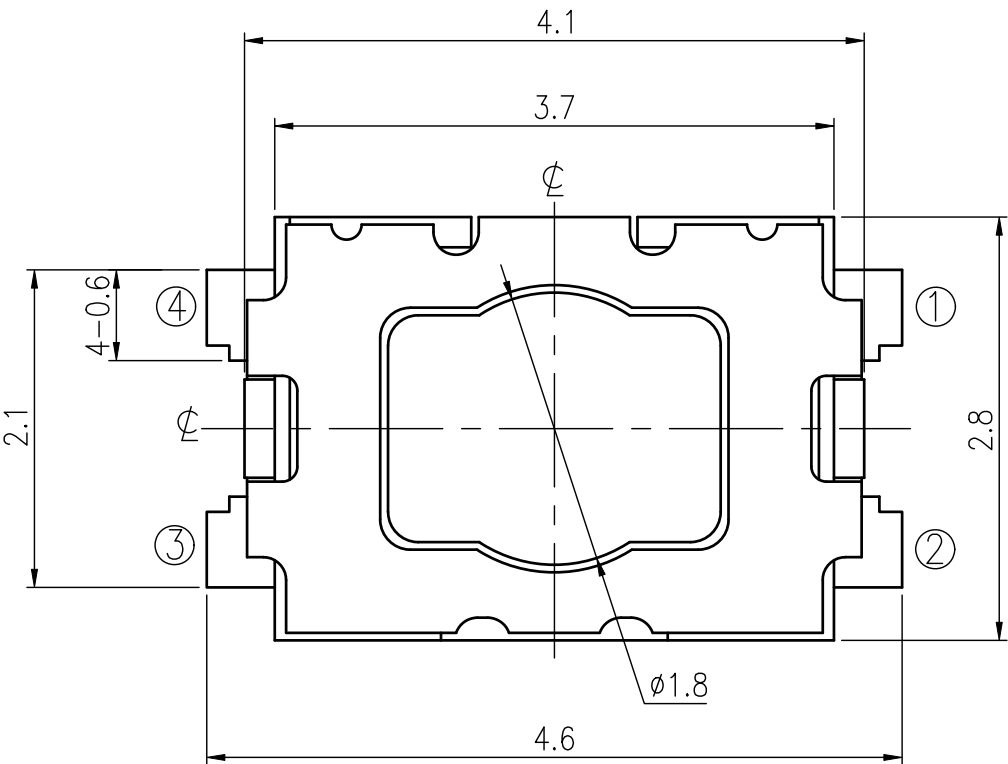
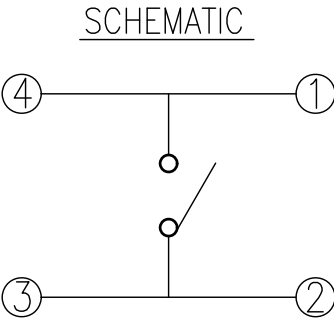
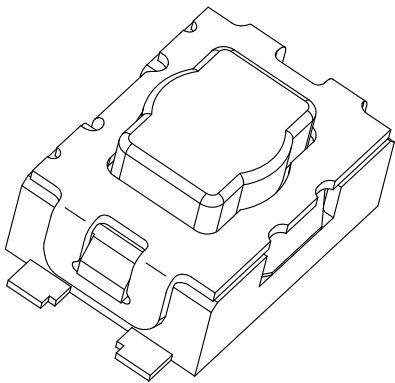


RoHS Compliant



| REVISIONS | | | | | | | |
|-----------------------|-----------------|-------------------------|-----------|--------------------|-------------|--|--------|
| Rev | DESCRIPTION | DATE | DRAWER | Rev | DESCRIPTION | DATE | DRAWER |
| A | Initial Drawing | 2020.01.14 | Jane Shen | C | | | |
| B | | | | D | | | |
| SPECIFICATIONS | | | | | | | |
| RATING | | DC32V 50mA | | TIMING | | | |
| CONTACT RESISTANCE | | 100mΩ MAX. | | OPERATION (TORQUE) | | | |
| INSULATION RESISTANCE | | DC500V-1GΩ MIN. | | STROKE (ANGLE) | | 0.25 ^{+0.1} _{-0.15} mm | |
| WITHSTAND VOLTAGE | | AC250V-1 MINUTE | | LIFE | | | |
| REMARKS: | | Waterproof Grade : IP67 | | | | | |



| MODEL NO. | OPERATING FORCE | LIFE |
|-------------------|-----------------|---------|
| ETC228-AA1G-A200T | 200±50gf | 200,000 |
| ETC228-AA1G-A300T | 300±75gf | 150,000 |
| ETC228-AA1G-A400T | 400±100gf | 100,000 |

| TOLERANCES UNLESS OTHERWISE SPECIFIED ±0.1 | | | SIGNATURES | DATE | MODEL |
|--|---------|------------|--------------------------|------------|-------------------|
| | UNIT mm | SCALE 20/1 | DRAWER Jane Shen | 2020.01.14 | TITLE TACT SWITCH |
| | | | CHECKED Landry Ju | 2020.01.14 | |
| | | | REVIEWED | | NO. SEE MODEL NO. |
| | | | APPROVALS Qiuyuan Chuang | 2020.01.14 | |

TAIWAN MISAKI ELECTRONICS CO., LTD.

RoHS Compliant

| | | |
|-----|--------------|-------------|
| ③ | COVER TAPE | POLYESTER |
| ② | CARRIER TAPE | POLYSTYRENE |
| ① | REEL | POLYSTYRENE |
| NO. | PARTS NAME | MATERIALS |

8. DIMENSIONS :
-
- The drawing includes the following dimensions and features:
- Top View:** Shows a rectangular assembly with a total width of 12.0 ± 0.3 and a total height of 5.5 . It features four circular holes with a diameter of $\phi 1.5$. The distance between the centers of the two inner holes is 4.0 , and the distance from the center of the rightmost hole to the right edge is 2.0 . A section line A-A is indicated.
 - Section AA:** A cross-sectional view showing a central core with a diameter of $\phi 13.0 \pm 0.5$ and an outer layer with a thickness of 0.3 . The total height of the assembly is 4.95 , and the width of the outer layer is 2.1 .
 - Reel View:** A circular view of the reel with a diameter of $\phi 330$. It shows a central hub with a diameter of $\phi 21.0 \pm 0.8$ and a distance of 2.0 ± 0.5 between the centers of the two inner holes. The total height of the reel is 12.4^{+2}_{-0} .
 - Cover Tape:** A detail view of the cover tape with a width of 18.4 MAX. and a height of 9.3 .

| | | | | | | | | | |
|-----|------------|------|----------|--|-------------|------------|--|------------------------------------|----------|
| | | | | APPROVED BY Qinyuan Chuang | REVIEWED BY | CHECKED BY | DESIGNED BY Jane Shen 2017.03.08 | MODEL NO. NTC228—(A,B)1G Series | |
| | | | | | | | | PAGINATE. | SPEC NO. |
| | | | | | | | | 1/1 | P—808 |
| | | | | | | | | | |
| | | | | | | | | | |
| SYM | DISCRPTION | DATE | APPROVED | | | | | | |