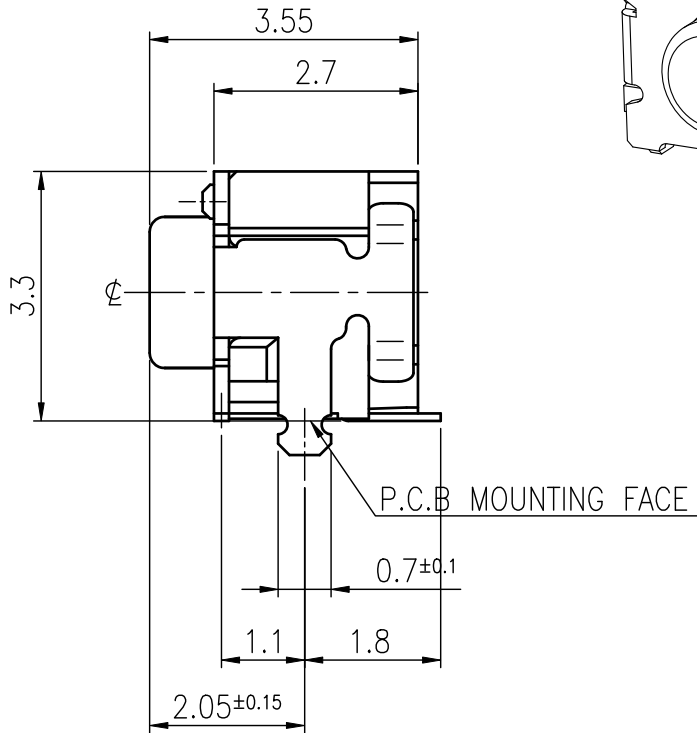
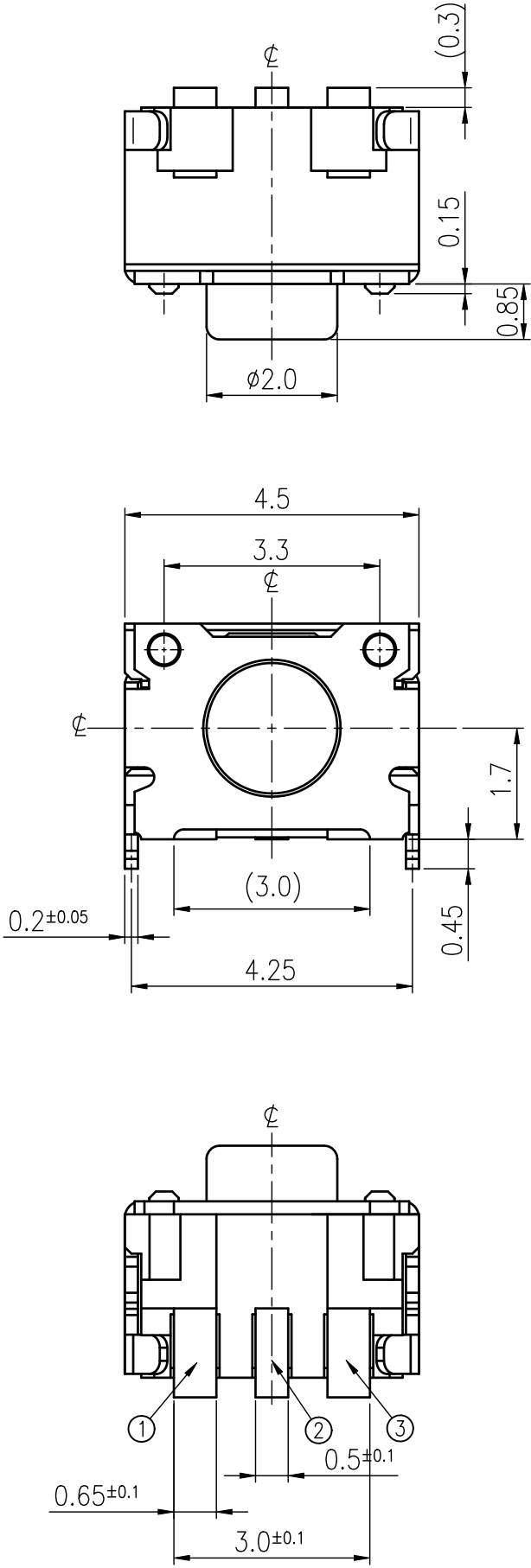


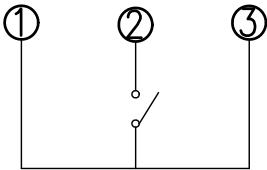
RoHS Compliant



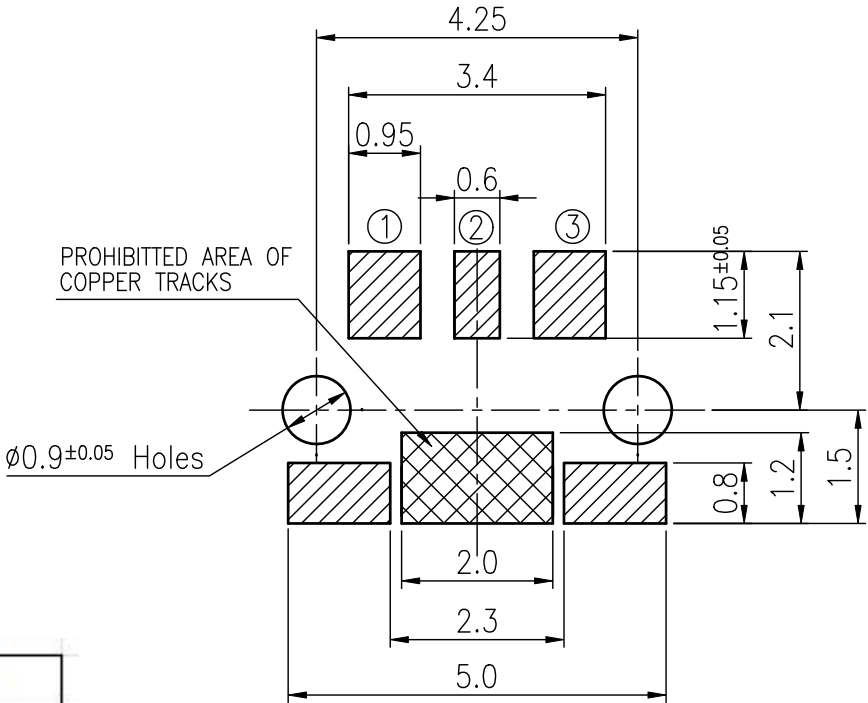
MODEL NO.	OPERATING FORCE	LIFE
ETC325-DT1J-A160T	160±50gf	200,000
ETC325-DT1J-A250T	250±50gf	100,000

REVISIONS							
Rev	DESCRIPTION	DATE	DRAWER	REV	DESCRIPTION	DATE	DRAWER
A	Initial Drawing	2017.06.20	Jane Shen	C			
B	Change Drawing	2018.09.17	Jane Shen	D			
SPECIFICATIONS							
RATING		DC12V 50mA		TIMING			
CONTACT RESISTANCE		500mΩ MAX.		OPERATION (TORQUE)			
INSULATION RESISTANCE		DC500V-100MΩ MIN.		STROKE (ANGLE)		0.2±0.1 mm	
WITHSTAND VOLTAGE		AC250V-1 MINUTE		LIFE		CYCLES	
REMARKS:							

SCHEMATIC



P.C.B. LAYOUT



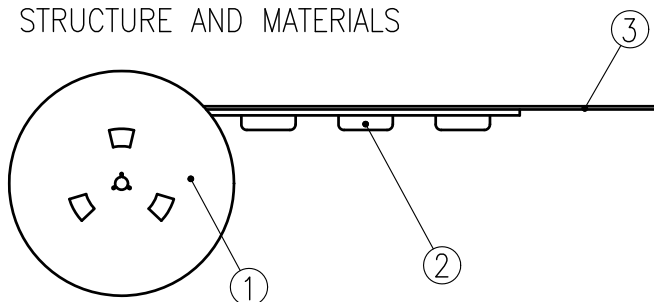
TOLERANCES UNLESS OTHERWISE SPECIFIED ±0.2			SIGNATURES		DATE	MODEL
			DRAWN	Jane Shen	2018.09.17	TITLE
			CHECKED			TACT SWITCH
			REVIEWED	Landry Ju	2018.09.17	NO.
			APPROVALS	Dennis Hung	2018.09.17	See Model No.

TAIWAN MISAKI ELECTRONICS CO., LTD.

# THE PACKING SPECIFICATIONS

RoHS Compliant

## 1. STRUCTURE AND MATERIALS



③	COVER TAPE	POLYESTER
②	CARRIER TAPE	POLYSTYRENE
①	REEL	POLYSTYRENE
NO.	PARTS NAME	MATERIALS

2. PACKAGING QUANTITY : 1,800 PCS/REEL.

3. MORE THAN 10 EMPTY POCKETS SHOULD BE REMAINED AT BOTH ENDS OF THE CARRIER TAPE FOR EACH REEL.

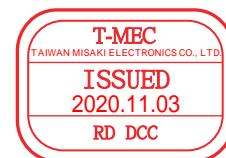
4. SHORTAGE LESS THAN 10 PCS A REEL IS ACCERABLE BUT MORE THAN 3 RUNNING POCKETS SHORTAGE IS NOT ALLOWED.

5. STRIPPING STRENGTH OF COVER TAPE IS BETWEEN 10 gf TO 130 gf AND STRIPPING ANGLE SHOULD BE WITHIN 165°~180°.

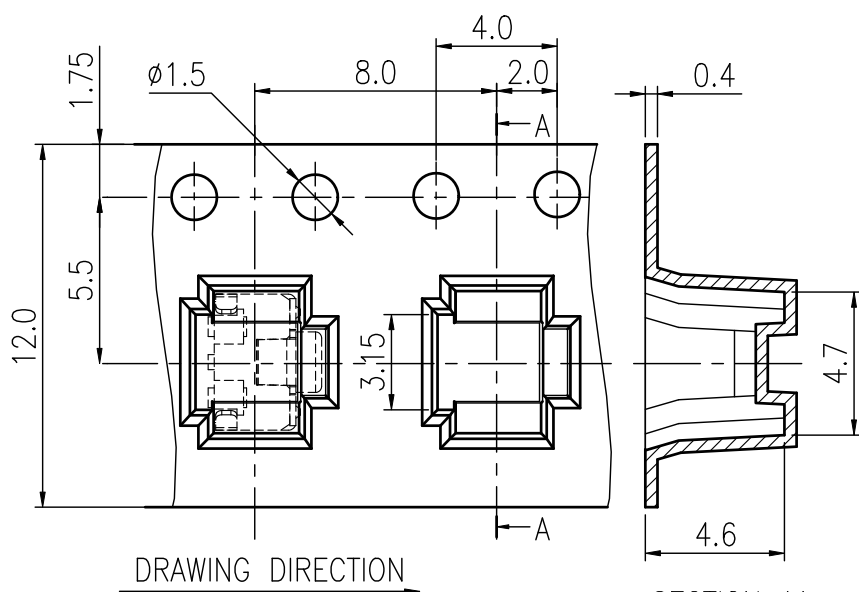
6. THE PRODUCT IN THE POCKER OF CARRIER TAPE SHOULD BE PLACED IN A SPECIFIED CORRECT POSITION.

7. TAPE AND REEL PER EIA-481

8. DIMENSIONS :

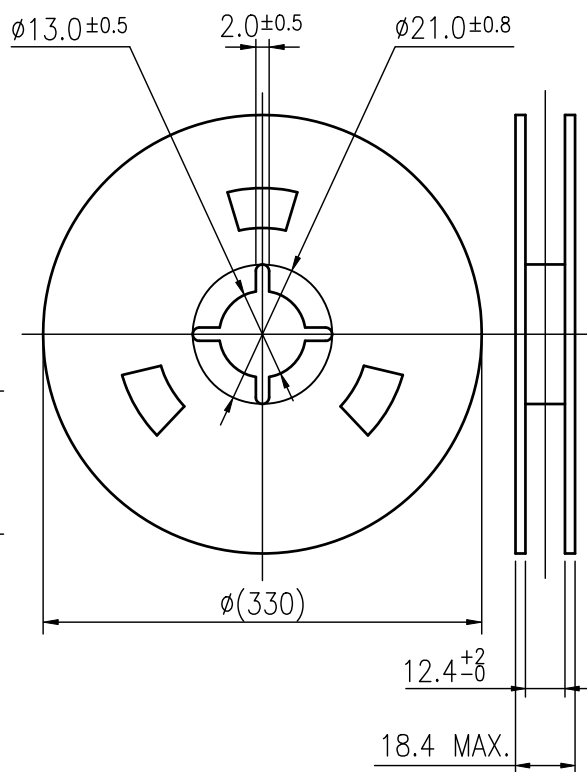
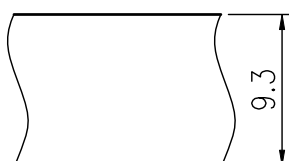


CARRIER TAPE



SECTION AA

COVER TAPE



				APPROVED BY	REVIEWED BY	CHECKED BY	DESIGNED BY	MODEL NO.
				Qiuyuan Chuang			Jane Shen	NTC325-(D,E)_J-
								PAGINATE.
								1/1
								SPEC NO.
								P-753
SYM	DISCRIPTION	DATE	APPROVED					

TAIWAN MISAKI ELECTRONICS CO.,LTD.