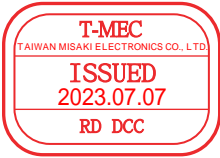
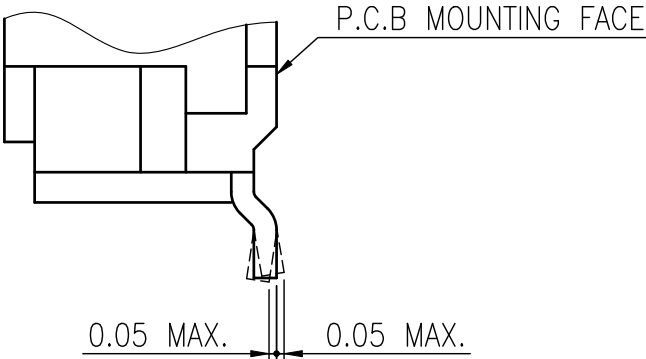
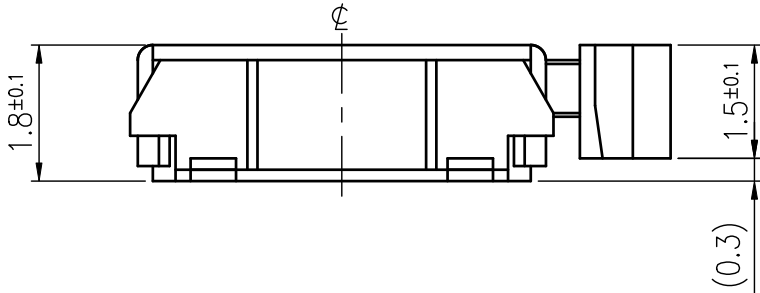
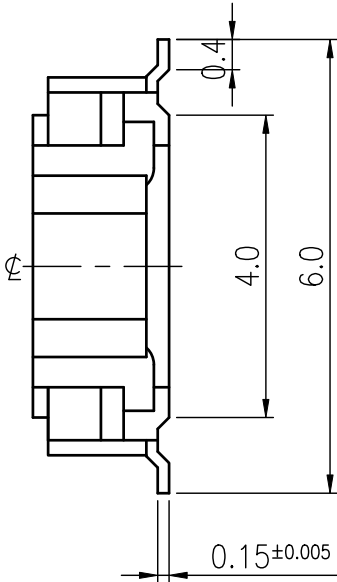
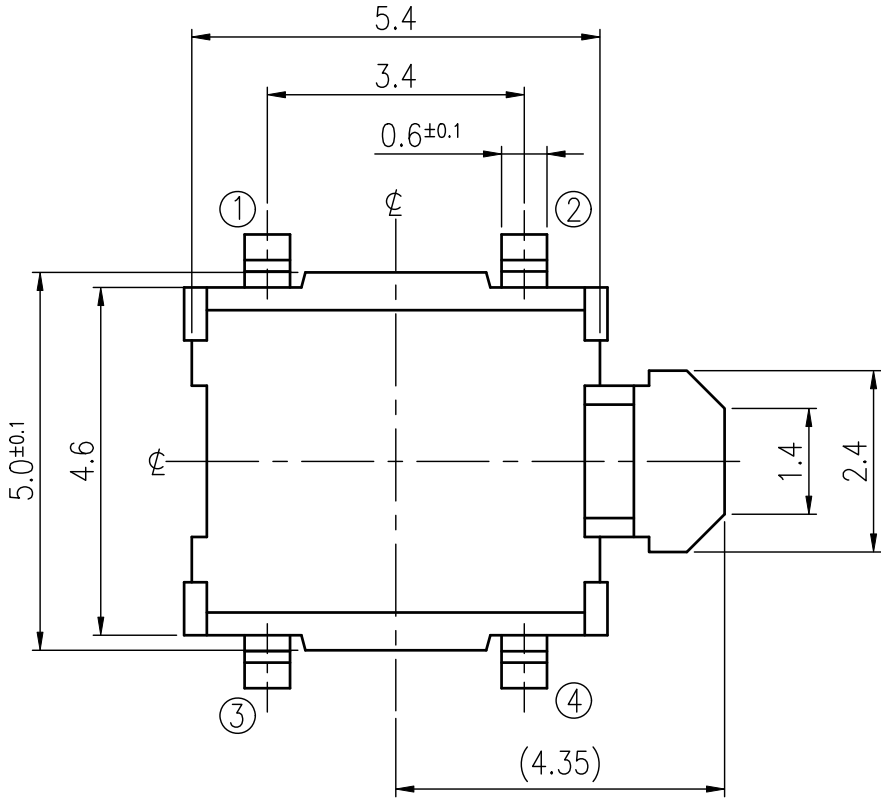


RoHS Compliant

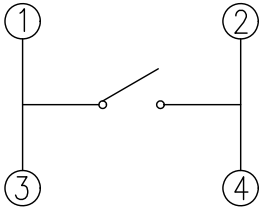


| REVISIONS             |                 |                   |           |                    |             |               |        |
|-----------------------|-----------------|-------------------|-----------|--------------------|-------------|---------------|--------|
| Rev                   | DESCRIPTION     | DATE              | DRAWER    | Rev                | DESCRIPTION | DATE          | DRAWER |
| A                     | Initial Drawing | 2019.11.27        | Jane Shen | C                  |             |               |        |
| B                     |                 |                   |           | D                  |             |               |        |
| SPECIFICATIONS        |                 |                   |           |                    |             |               |        |
| RATING                |                 | DC12V 50mA        |           | TIMING             |             |               |        |
| CONTACT RESISTANCE    |                 | 500mΩ MAX.        |           | OPERATION (TORQUE) |             |               |        |
| INSULATION RESISTANCE |                 | DC500V-100MΩ MIN. |           | STROKE (ANGLE)     |             | 0.2±0.12 mm   |        |
| WITHSTAND VOLTAGE     |                 | AC250V-1 MINUTE   |           | LIFE               |             | 50,000 CYCLES |        |
| REMARKS:              |                 |                   |           |                    |             |               |        |

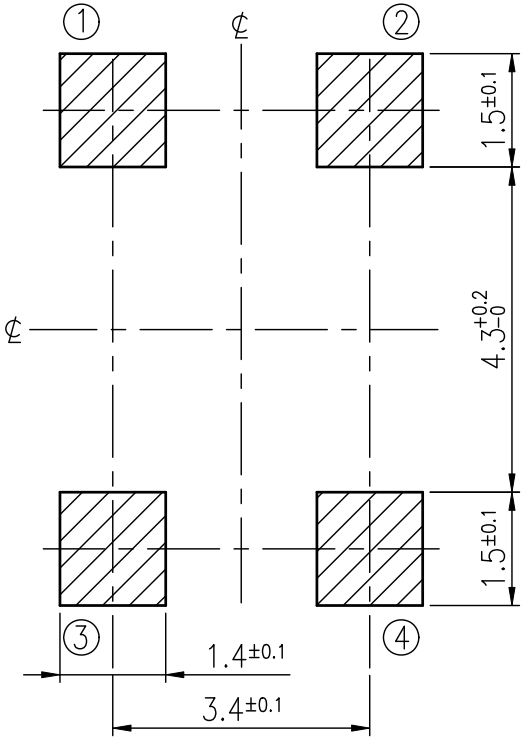


TERMINAL DETAIL (20/1)

SCHEMATIC



P.C.B. LAYOUT



HATCHED AREA SHOWS SOLDERING LAND

| MODEL NO.         | OPERATING FORCE    |
|-------------------|--------------------|
| ETC315-AF1G-A180T | 180+80gf<br>- 40gf |
| ETC315-AF1G-A350T | 350±80gf           |

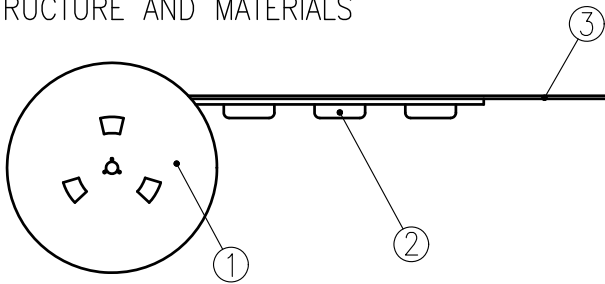
| TOLERANCES UNLESS OTHERWISE SPECIFIED ±0.3 |  | SIGNATURES               | DATE       | MODEL                |
|--|--|--------------------------|------------|----------------------|
|  |  | DRAWER Jane Shen         | 2019.11.27 | TITLE<br>TACT SWITCH |
|  |  | CHECKED                  |            |                      |
|  |  | REVIEWED                 |            | NO.<br>See Model No. |
|  |  | APPROVALS Qiuyuan Chuang | 2019.11.27 |                      |

TAIWAN MISAKI ELECTRONICS CO., LTD.

# THE PACKING SPECIFICATIONS

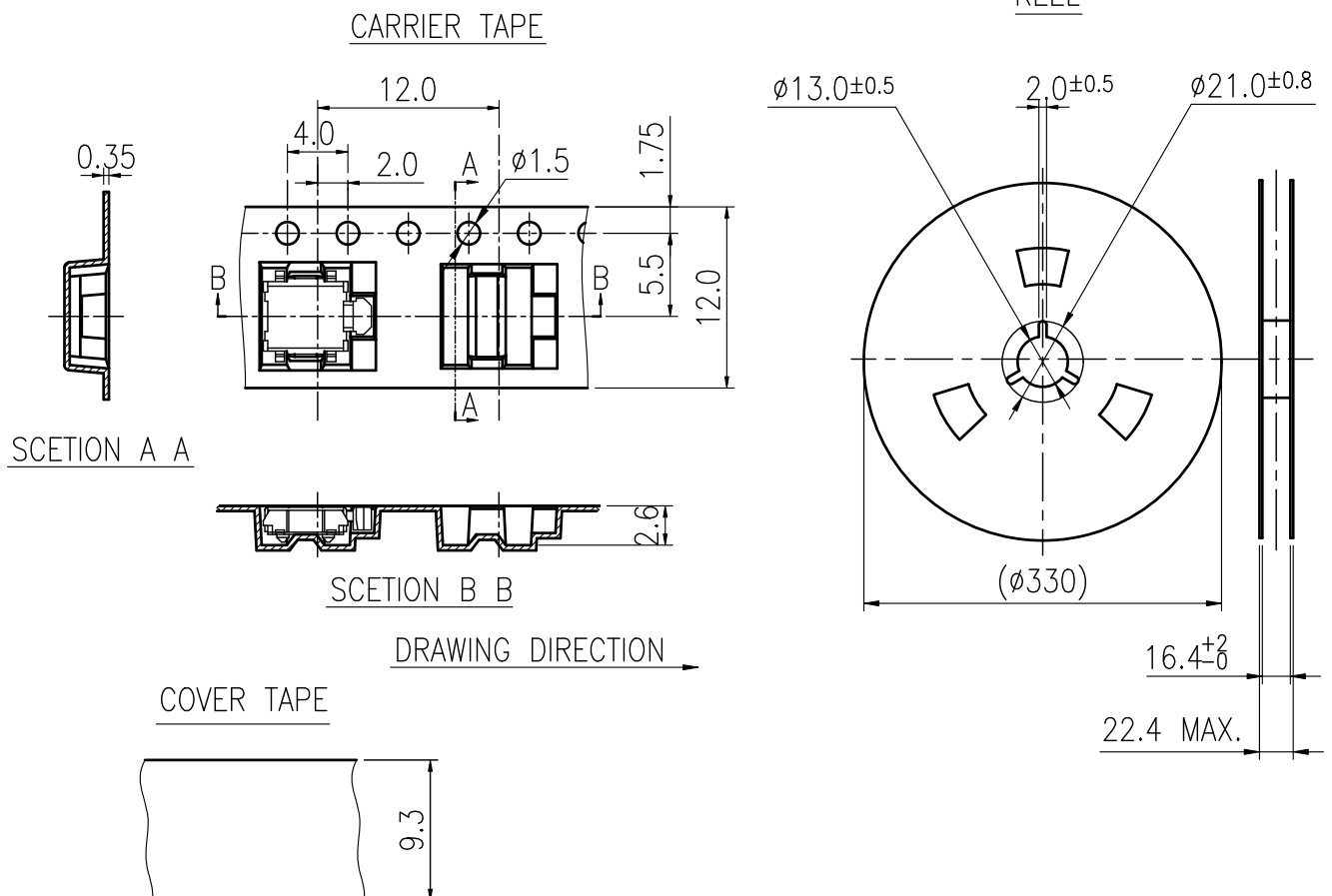
RoHS Compliant

## 1.STRUCTURE AND MATERIALS



| ③   | COVER TAPE   | POLYESTER   |
|-----|--------------|-------------|
| ②   | CARRIER TAPE | POLYSTYRENE |
| ①   | REEL         | POLYSTYRENE |
| NO. | PARTS NAME   | MATERIALS   |

- PACKAGING QUANTITY : 2,000 PCS/REEL
- MORE THAN 10 EMPTY POCKETS SHOULD BE REMAINED AT BOTH ENDS OF THE CARRIER TAPE FOR EACH REEL.
- SHORTAGE LESS THAN 10 PCS A REEL IS ACCETABLE BUT MORE THAN 3 RUNNING POCKETS SHORTAGE IS NOT ALLOWED.
- STRIPPING STRENGTH OF COVER TAPE IS BETWEEN 10 gf TO 130 gf AND STRIPPING ANGLE SHOULD BE WITHIN 165° ~ 180°.
- THE PRODUCT IN THE POCKET OF CARRIER TAPE SHOULD BE PLACED IN A SPECIFIED CORRECT POSITION.
- TAPE AND REEL PER EIA-481.
- DIMENSIONS :



|     |             |      |          | APPROVED BY | REVIEWED BY | CHECKED BY | DESIGNED BY | MODEL NO.        |
|-----|-------------|------|----------|-------------|-------------|------------|-------------|------------------|
|     |             |      |          |             |             |            | Jane Shen   | NTC315-A 1G-A OT |
|     |             |      |          |             |             |            |             | PAGINATE.        |
|     |             |      |          |             |             |            |             | 1/1              |
|     |             |      |          |             |             |            |             | SPEC NO.         |
|     |             |      |          |             |             |            |             | P-543            |
| SYM | DISCRIPTION | DATE | APPROVED |             |             |            |             |                  |

TAIWAN MISAKI ELECTRONICS CO.,LTD.