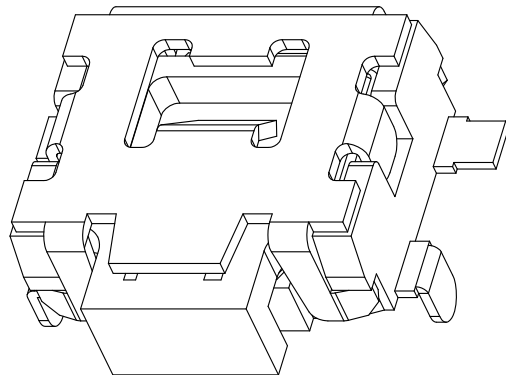
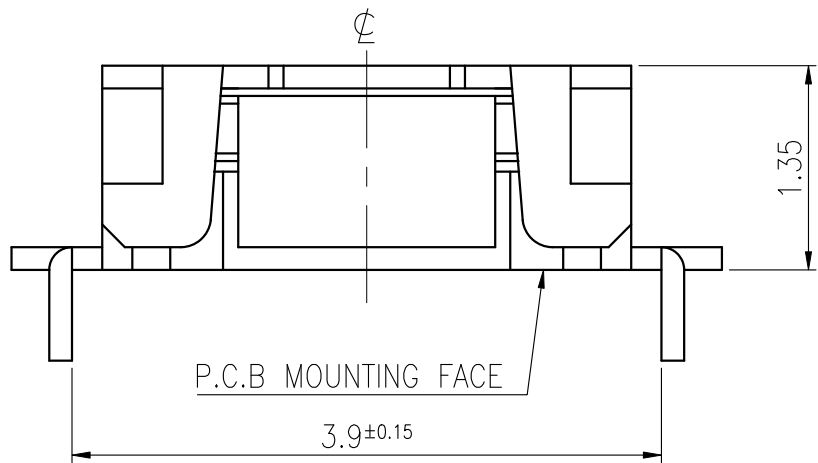
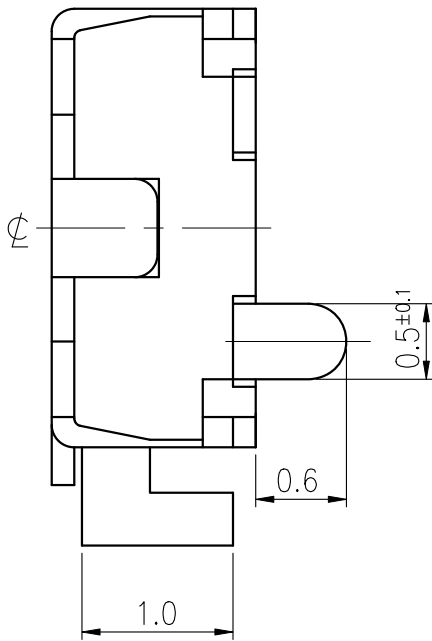
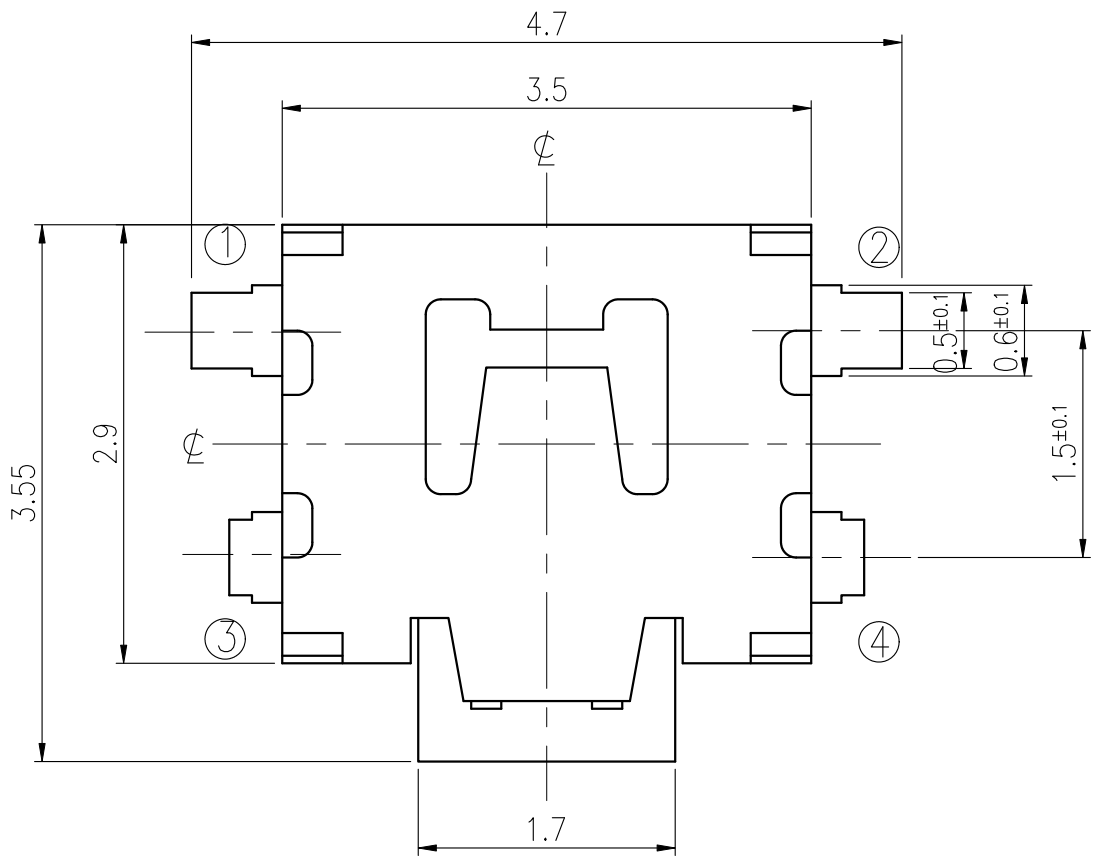


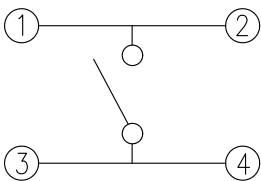
RoHS Compliant



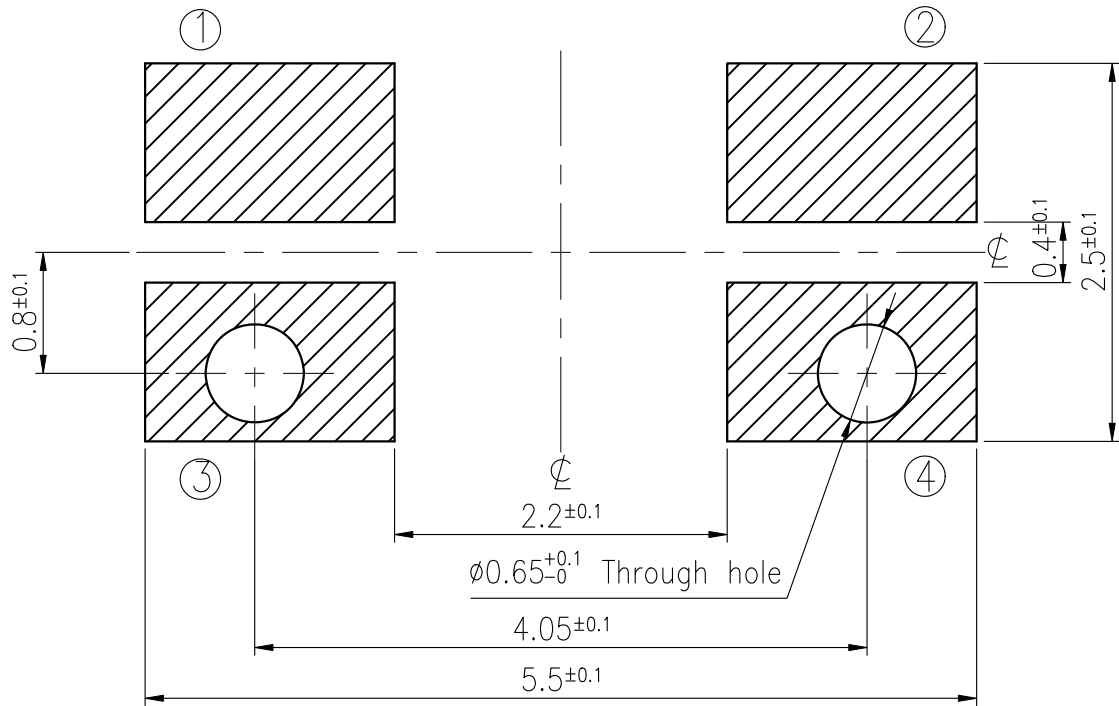
REVISIONS							
Rev	DESCRIPTION	DATE	DRAWER	Rev	DESCRIPTION	DATE	DRAWER
A	Initial Drawing	2013.04.24	Max Chen	C			
B				D			
SPECIFICATIONS							
RATING		DC12V 50mA		TIMING			
CONTACT RESISTANCE		500mΩ MAX.		OPERATION (TORQUE)			
INSULATION RESISTANCE		DC500V - 100MΩ MIN.		STROKE (ANGLE)		0.2 ±0.2mm	
WITHSTAND VOLTAGE		AC250V - 1 MINUTE.		CONTACT RESISTANCE		1Ω MAX.	
REMARKS:				(AFTER		100,000 CYCLES LIFE TEST)	



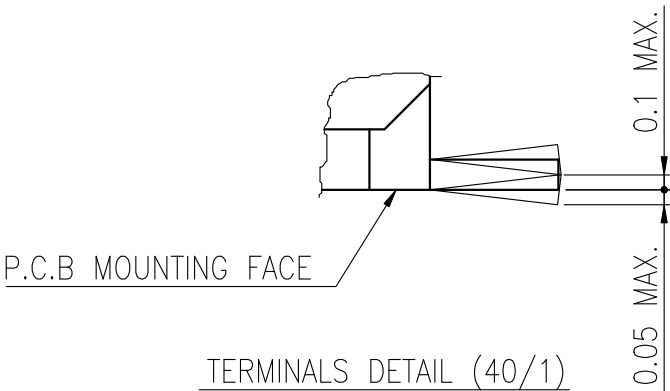
SCHEMATIC



RECOMMENDED P.C.B LAYOUT



HATCHED AREA SHOWS SOLDERING LAND



MODEL NO.	OPERATING FORCE
ETC311-EC1T-A160T	160+70gf - 40gf
ETC311-EC1T-A220T	220+80gf - 70gf

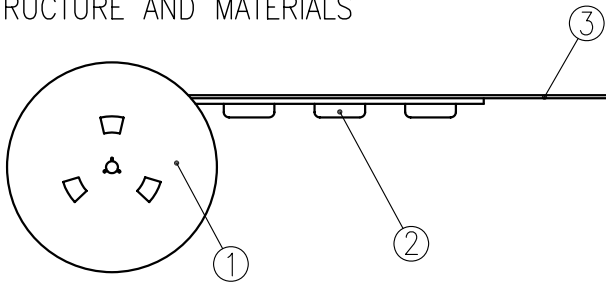
TOLERANCES UNLESS OTHERWISE SPECIFIED ±0.2			SIGNATURES		DATE	MODEL	
			DRAWER	Max Chen	2013.04.24	TITLE  TACT SWITCH	
			CHECKED				
	UNIT mm	SCALE 20/1	REVIEWED			NO.  SEE MODEL NO.	
			APPROVALS <i>Dennis Hung</i>		2013.04.24		

TAIWAN MISAKI ELECTRONICS CO., LTD.

# THE PACKING SPECIFICATIONS

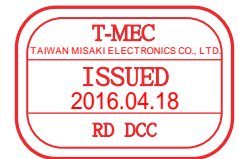
RoHS Compliant

## 1.STRUCTURE AND MATERIALS

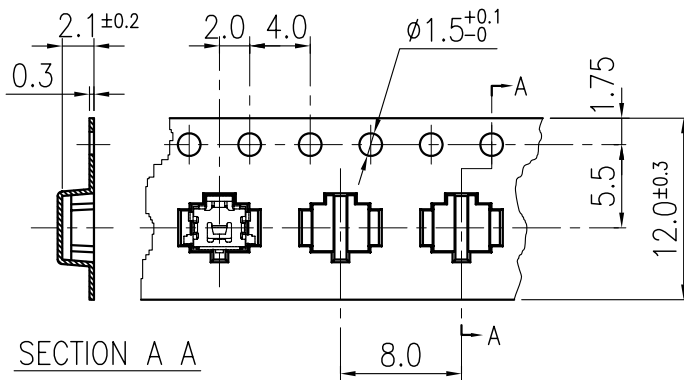


③	COVER TAPE	POLYESTER
②	CARRIER TAPE	POLYSTYRENE
①	REEL	POLYSTYRENE
NO.	PARTS NAME	MATERIALS

- PACKAGING QUANTITY : 3,500 PCS/REEL
- MORE THAN 10 EMPTY POCKETS SHOULD BE REMAINED AT BOTH ENDS OF THE CARRIER TAPE FOR EACH REEL.
- SHORTAGE LESS THAN 10 PCS A REEL IS ACCEPTABLE BUT MORE THAN 3 RUNNING POCKETS SHORTAGE IS NOT ALLOWED.
- STRIPPING STRENGTH OF COVER TAPE IS BETWEEN 10 gf TO 130 gf AND STRIPPING ANGLE SHOULD BE WITHIN 165° ~ 180°.
- THE SWITCH SHOULD NOT BE STAYED IN CARRIER TAPE WHEN CARRIER TAPE UPSIDE DOWN.
- END OF CARRIER TAPE IS APART FROM REEL EASILY.
- THE DIRECTION OF MARK IS FREE.
- DIMENSIONS :



CARRIER TAPE

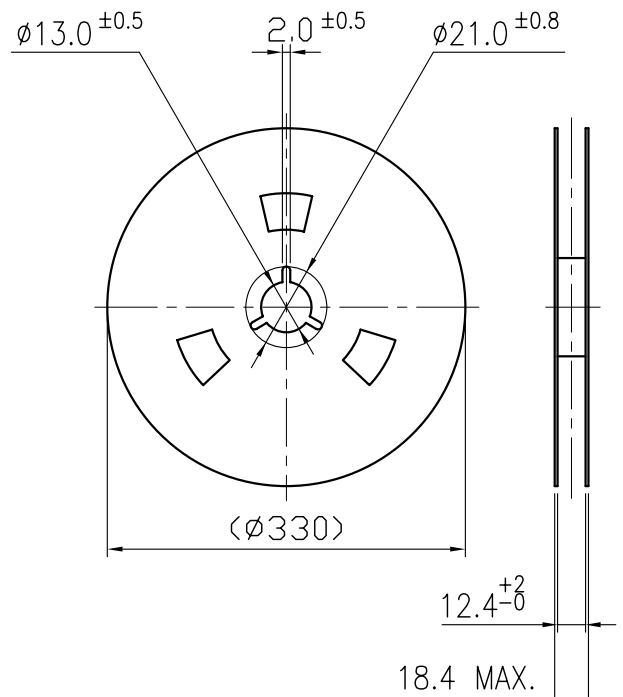


DRAWING DIRECTION

COVER TAPE



REEL



				APPROVED BY	REVIEWED BY	CHECKED BY	DESIGNED BY	MODEL NO.
						Ken Lin	Max Chen	NTC311-EC1T-A160T
						2008.09.10	2008.09.10	PAGINATE.
								1/1
								SPEC NO.
								P-466
SYM	DISCRIPTION	DATE	APPROVED					

TAIWAN MISAKI ELECTRONICS CO.,LTD.