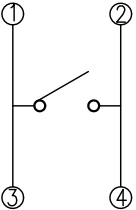


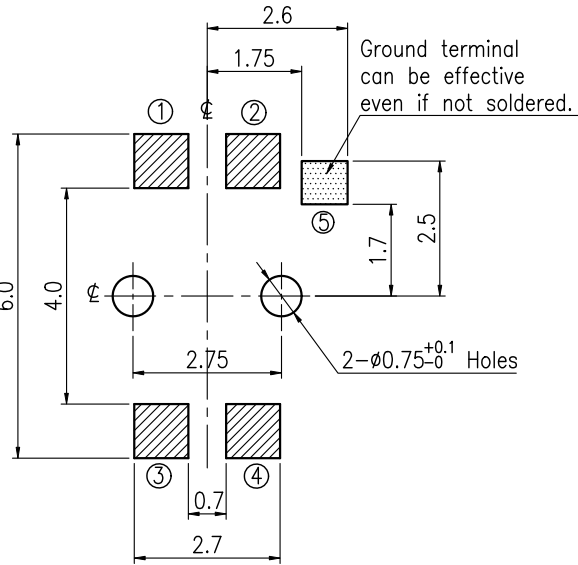
MODEL NO.	OPERATING FORCE	STROKE	LIFE
ETC316-DC1J-A160T	160±50gf	0.25±0.1mm	200,000
ETC316-DC1J-A220T	220±50gf	0.3+0.1-0.2mm	100,000

REVISIONS							
Rev	DESCRIPTION	DATE	DRAWER	Rev	DESCRIPTION	DATE	DRAWER
A	Initial Drawing	2012.07.05	Jane Shen	C			
B				D			
SPECIFICATIONS							
RATING		DC12V 50mA		TIMING			
CONTACT RESISTANCE		100mΩ MAX.		OPERATION (TORQUE)			
INSULATION RESISTANCE		DC500V–100MΩ MIN.		STROKE (ANGLE)			
WITHSTAND VOLTAGE		AC250V– MINUTE		CONTACT RESISTANCE		1 Ω MAX.	
REMARKS:				(AFTER		CYCLES LIFE TEST)	

SCHEMATIC



P.C.B MOUNTING PLAN



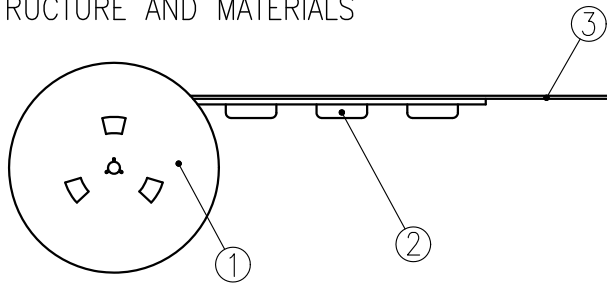
HATCHED AREA SHOWS SOLDERING LAND

TOLERANCES UNLESS OTHERWISE SPECIFIED ±0.1		SIGNATURES		DATE	MODEL
		DRAWER	Jane Shen	2012.07.05	TITLE
		CHECKED			TACT SWITCH
		REVIEWED			NO.
		APPROVALS			See Model No.
TAIWAN MISAKI ELECTRONICS CO., LTD.					

THE PACKING SPECIFICATIONS

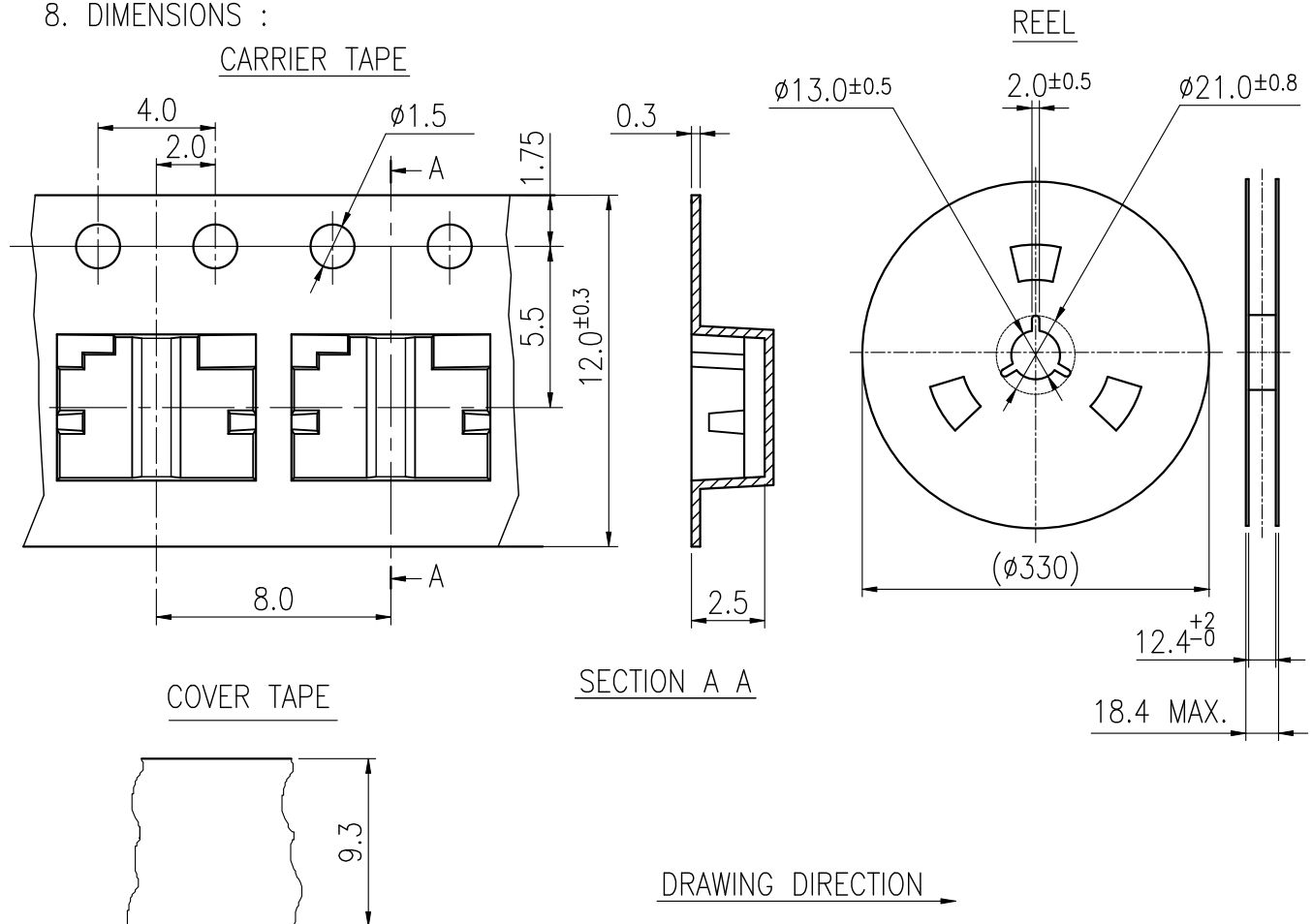
RoHS Compliant

1.STRUCTURE AND MATERIALS



③	COVER TAPE	POLYESTER
②	CARRIER TAPE	POLYSTYRENE
①	REEL	POLYSTYRENE
NO.	PARTS NAME	MATERIALS

- PACKAGING QUANTITY : 3,300 PCS/REEL
- MORE THAN 10 EMPTY POCKETS SHOULD BE REMAINED AT BOTH ENDS OF THE CARRIER TAPE FOR EACH REEL.
- SHORTAGE LESS THAN 10 PCS A REEL IS ACCETABLE BUT MORE THAN 3 RUNNING POCKETS SHORTAGE IS NOT ALLOWED.
- STRIPPING STRENGTH OF COVER TAPE IS BETWEEN 10 gf TO 70 gf AND STRIPPING ANGLE SHOULD BE WITHIN 165° ~ 180° .
- THE PRODUCT IN THE POCKET OF CARRIER TAPE SHOULD BE PLACED IN A SPECIFIED CORRECT POSITION.
- TAPE AND REEL PER EIA-481
- DIMENSIONS :



				APPROVED BY	REVIEWED BY	CHECKED BY	DESIGNED BY	MODEL NO.
							Jane Shen	NTC316- DC1J-A220T
							2012.07.12	PAGINATE.
								1/1
								SPEC NO.
								P-68
SYM	DISCRPTION	DATE	APPROVED					

TAIWAN MISAKI ELECTRONICS CO.,LTD.