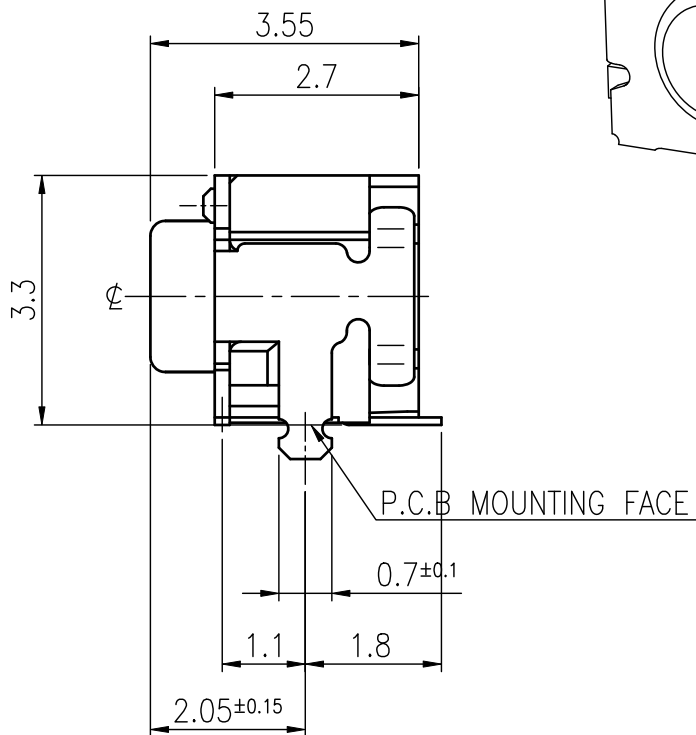
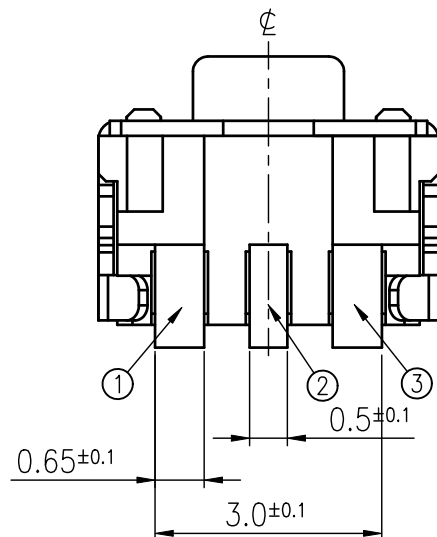
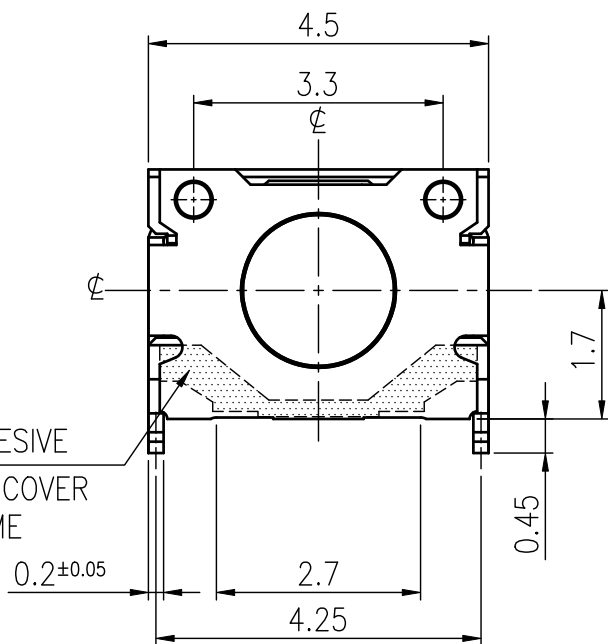
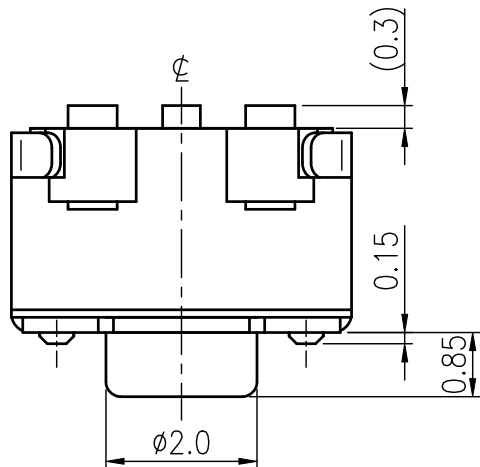
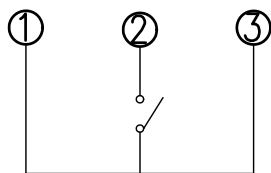


RoHS Compliant

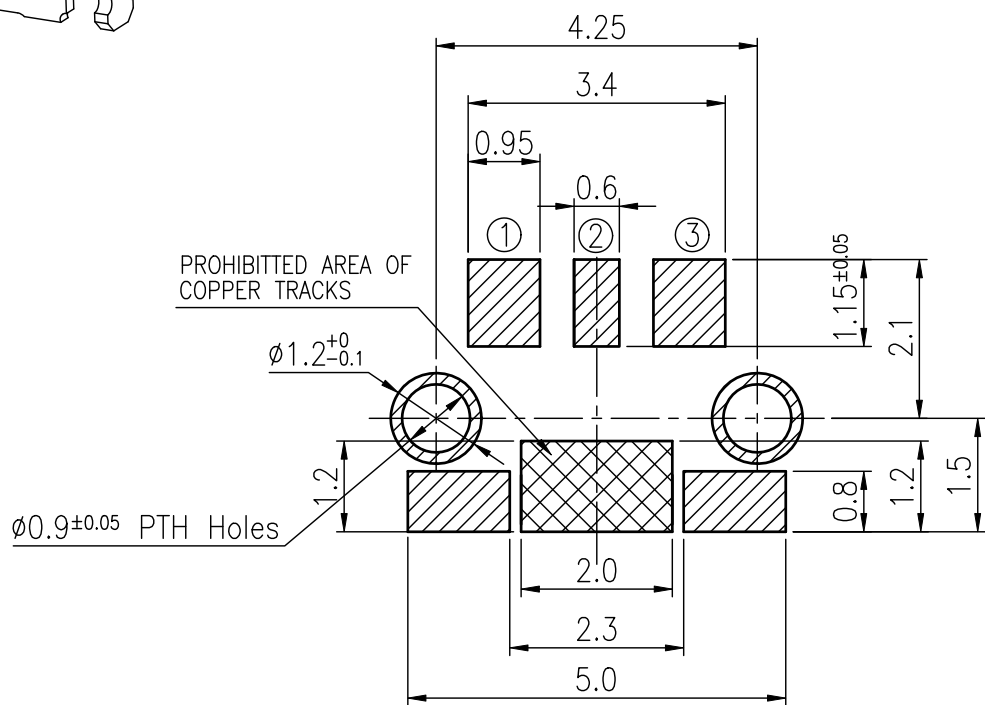


REVISIONS							
Rev	DESCRIPTION	DATE	DRAWER	REV	DESCRIPTION	DATE	DRAWER
A	Initial Drawing	2015.04.07	Jamie Li	C			
B				D			
SPECIFICATIONS							
RATING		DC12V 50mA		TIMING			
CONTACT RESISTANCE		500mΩ MAX.		OPERATION (TORQUE)		160±50 gf	
INSULATION RESISTANCE		DC500V-100MΩ MIN.		STROKE (ANGLE)		0.2±0.1mm	
WITHSTAND VOLTAGE		AC250V-1 MINUTE		CONTACT RESISTANCE		1Ω MAX.	
REMARKS:				(AFTER 100,000 CYCLES LIFE TEST)			

SCHEMATIC



P.C.B. LAYOUT



HATCHED AREA SHOWS SOLDERING LAND
(TOLERANCES UNLESS OTHERWISE SPECIFIED ±0.1)

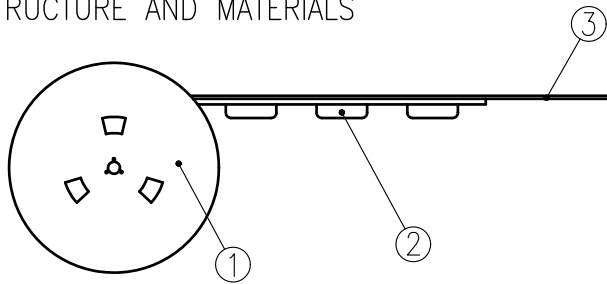
TOLERANCES UNLESS OTHERWISE SPECIFIED ±0.2			SIGNATURES		DATE	MODEL
			DRAWN	Jane Shen	2015.10.06	TACT SWITCH
			CHECKED			
			REVIEWED			NO. ETC325-CK1J-A160T
			APPROVALS <i>Dennis Hung</i>		2015.10.06	

TAIWAN MISAKI ELECTRONICS CO., LTD.

THE PACKING SPECIFICATIONS

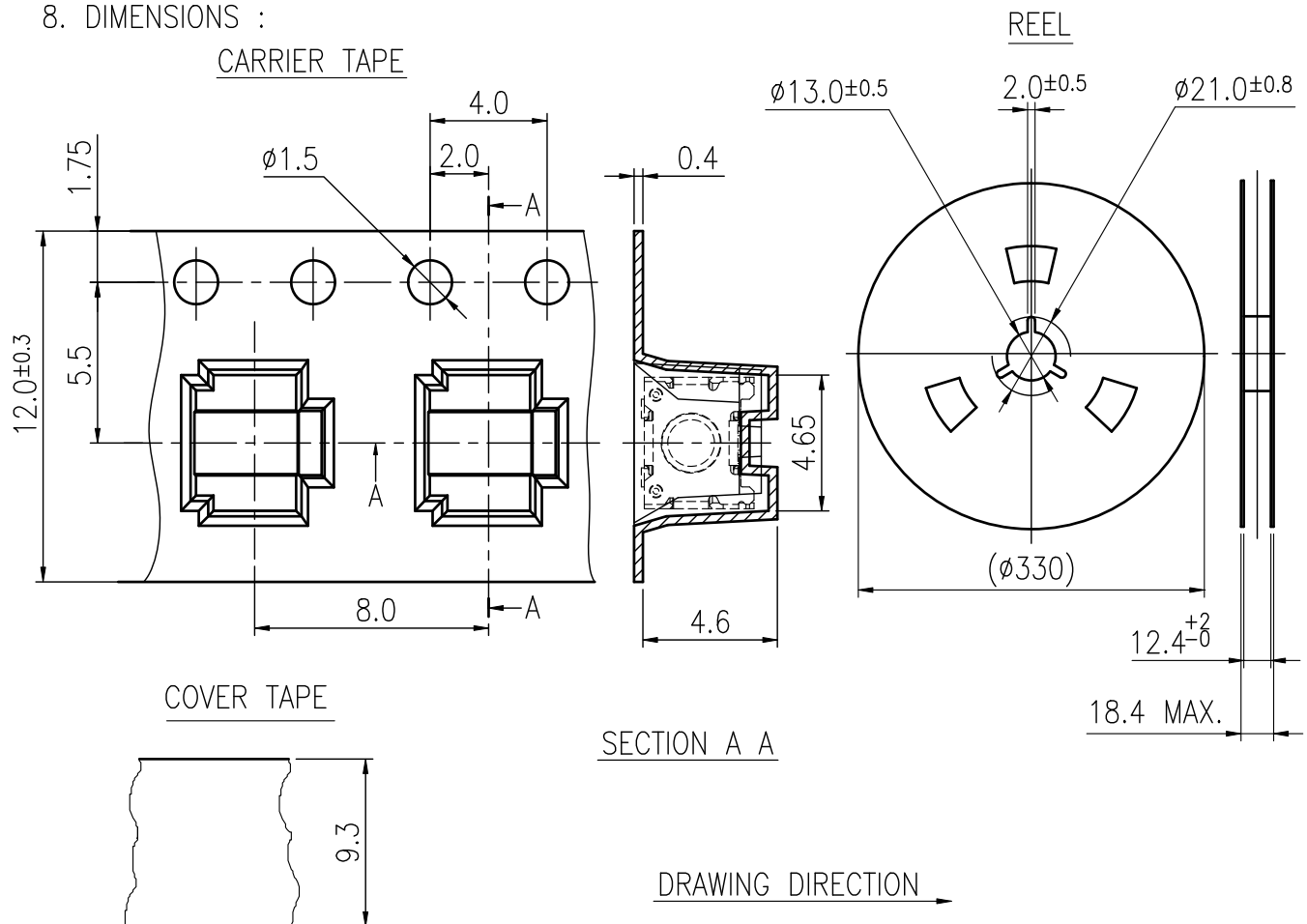
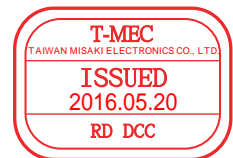
RoHS Compliant

1.STRUCTURE AND MATERIALS



③	COVER TAPE	POLYESTER
②	CARRIER TAPE	POLYSTYRENE
①	REEL	POLYSTYRENE
NO.	PARTS NAME	MATERIALS

- PACKAGING QUANTITY : 1,800 PCS/REEL
- MORE THAN 10 EMPTY POCKETS SHOULD BE REMAINED AT BOTH ENDS OF THE CARRIER TAPE FOR EACH REEL.
- SHORTAGE LESS THAN 10 PCS A REEL IS ACCEPTABLE BUT MORE THAN 3 RUNNING POCKETS SHORTAGE IS NOT ALLOWED.
- STRIPPING STRENGTH OF COVER TAPE IS BETWEEN 10 gf TO **130 gf** AND STRIPPING ANGLE SHOULD BE WITHIN 165° ~ 180°.
- THE PRODUCT IN THE POCKET OF CARRIER TAPE SHOULD BE PLACED IN A SPECIFIED CORRECT POSITION.
- TAPE AND REEL PER EIA-481
- DIMENSIONS :



				APPROVED BY	REVIEWED BY	CHECKED BY	DESIGNED BY	MODEL NO.
							Jamie Li	NTC325--_K1J SEIRES
							2015.04.08	PAGINATE. 1/1
								SPEC NO. P-753
SYM	DISCRIPTION	DATE	APPROVED					

TAIWAN MISAKI ELECTRONICS CO.,LTD.