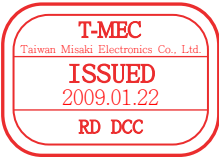
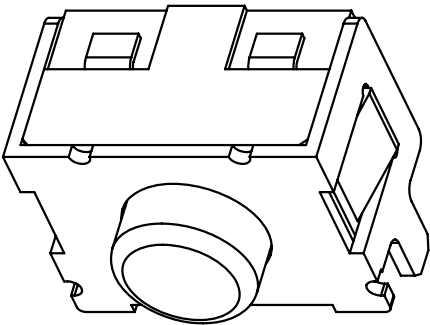
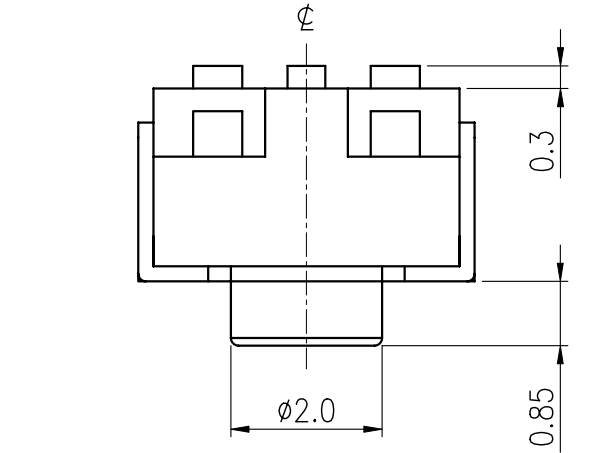


RoHS Compliant

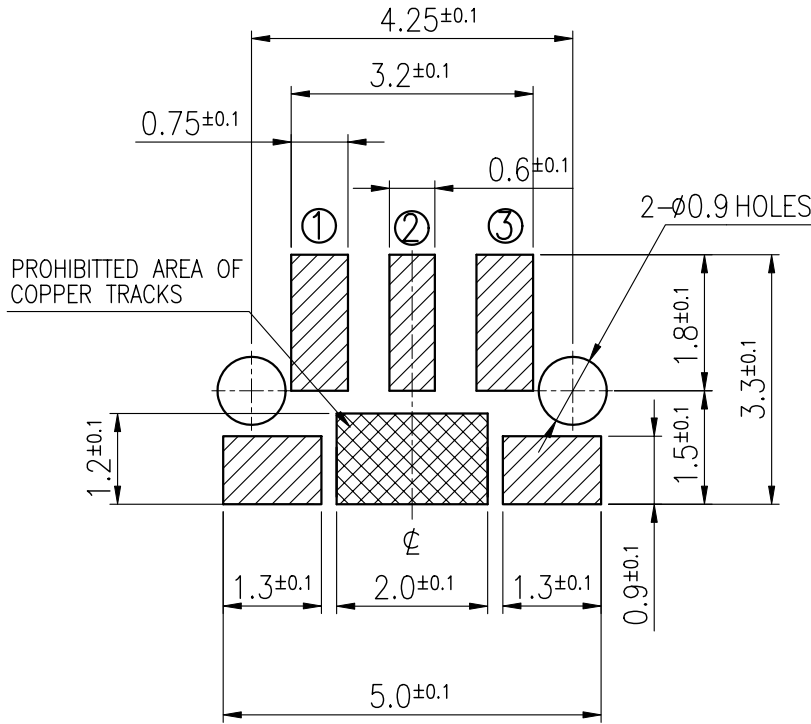
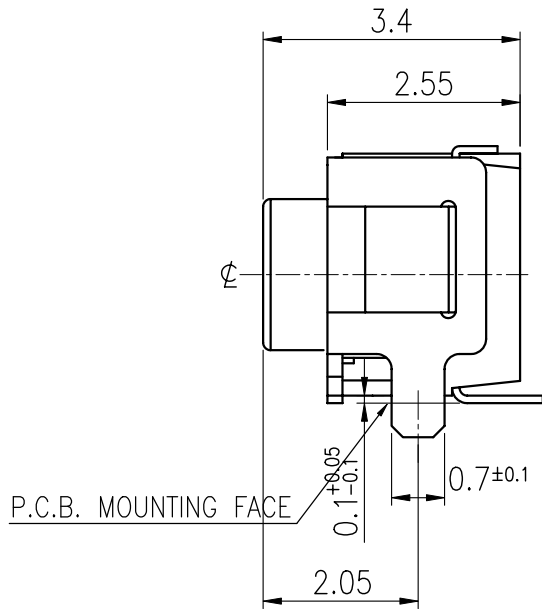
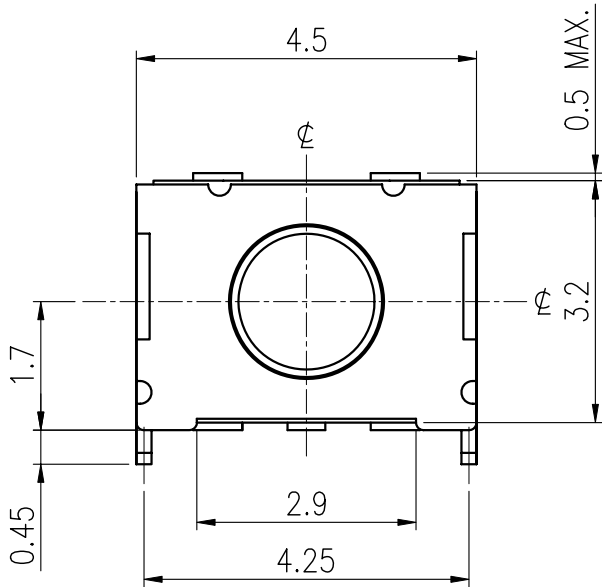
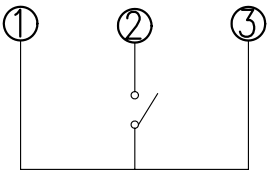


REVISIONS							
Rev	DESCRIPTION	DATE	DRAWER	REV	DESCRIPTION	DATE	DRAWER
A	Initial Drawing	2009.01.19	Jamie Li	C			
B				D			

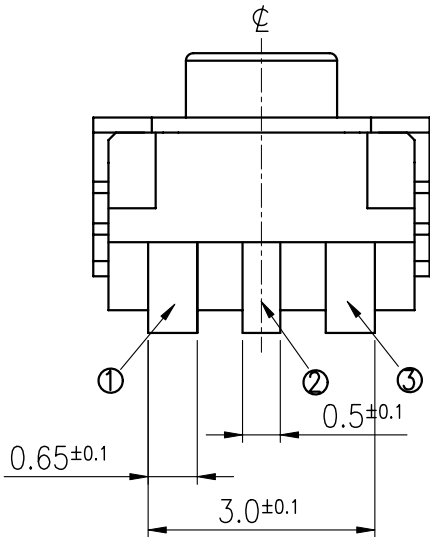
SPECIFICATIONS			
RATING	DC12V 50mA	TIMING	
CONTACT RESISTANCE	500mΩ MAX.	OPERATION (TORQUE)	160±50 gf
INSULATION RESISTANCE	DC500V - 100MΩ MIN.	STROKE (ANGLE)	0.2±0.1mm
WITHSTAND VOLTAGE	AC250V-1 MINUTE	CONTACT RESISTANCE	1Ω MAX.
REMARKS:		(AFTER 100,000 CYCLES LIFE TEST)	



SCHEMATIC



HATCHED AREA SHOWS SOLDERING LAND
(TOLERANCES UNLESS OTHERWISE SPECIFIED ±0.1)



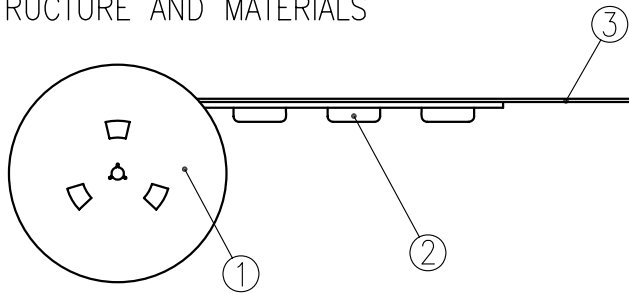
TOLERANCES UNLESS OTHERWISE SPECIFIED ±0.2			SIGNATURES		DATE	MODEL
			DRAWN	Jamie Li	2009.01.19	TACT SWITCH
			CHECKED	Catherine Lee	2009.01.20	
			REVIEWED	Ken Lin	2009.01.20	NO. ETC325-AA1J-A160T
			APPROVALS	Fred Chen	2009.01.20	

TAIWAN MISAKI ELECTRONICS CO., LTD.

THE PACKING SPECIFICATIONS

RoHS Compliant

1. STRUCTURE AND MATERIALS



③	COVER TAPE	POLYESTER
②	CARRIER TAPE	POLYSTYRENE
①	REEL	POLYSTYRENE
NO.	PARTS NAME	MATERIALS

2. PACKAGING QUANTITY : 1,900 PCS/REEL * 3 REEL/BOX = 5,700 PCS/BOX

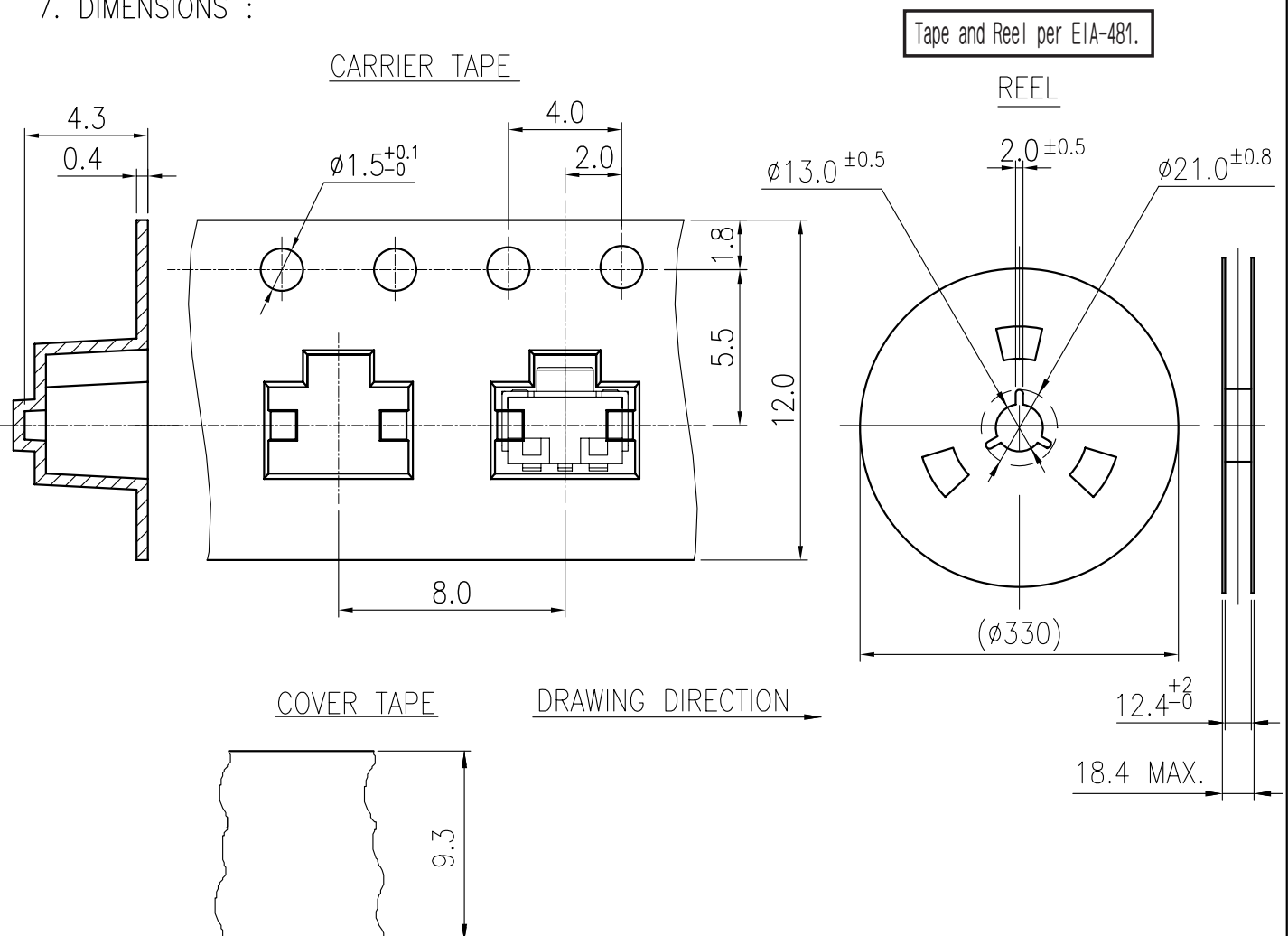
3. MORE THAN 10 EMPTY POCKETS SHOULD BE REMAINED AT BOTH ENDS OF THE CARRIER TAPE FOR EACH REEL.

4. SHORTAGE LESS THAN 10 PCS A REEL IS ACCETABLE BUT MORE THAN 3 RUNNING POCKETS SHORTAGE IS NOT ALLOWED.

5. STRIPPING STRENGTH OF COVER TAPE IS BETWEEN 10 gf TO **130** gf AND STRIPPING ANGLE SHOULD BE WITHIN 165° ~ 180°.

6. THE PRODUCT IN THE POCKET OF CARRIER TAPE SHOULD BE PLACED IN A SPECIFIED CORRECT POSITION.

7. DIMENSIONS :



				APPROVED BY	REVIEWED BY	CHECKED BY	DESIGNED BY	MODEL NO.
				<i>Fred Chen</i>	Ken Lin	Max Chen	Jamie Li	NTC325-AA1J-A160T
				0506	2008.05.05	2008.05.05	2008.05.05	PAGINATE.
				2008				1/1
SYM	DESCRIPTION	DATE	APPROVED					SPEC NO.
								P-455

TAIWAN MISAKI ELECTRONICS CO.,LTD.