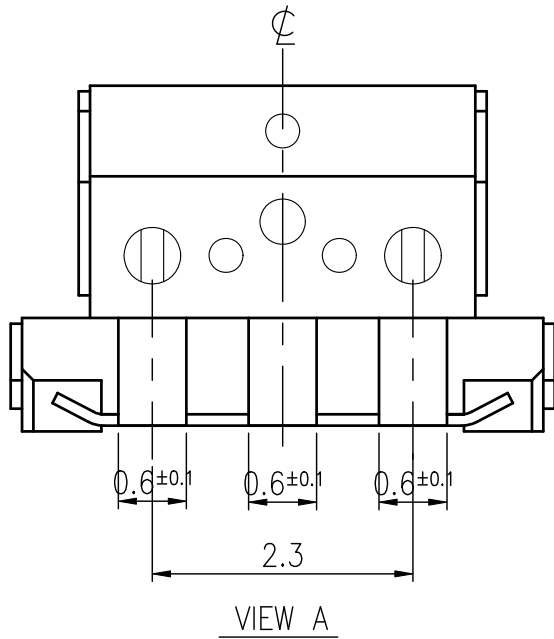
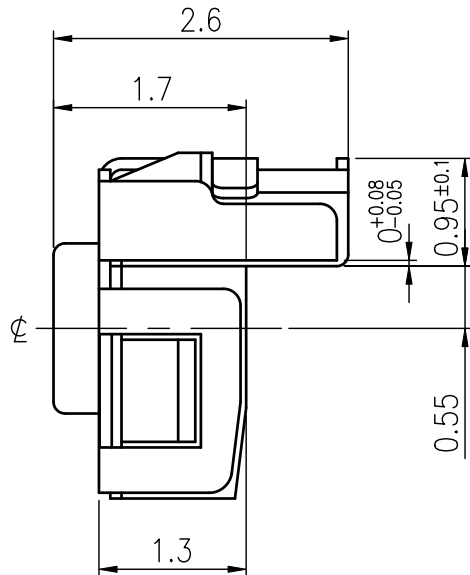
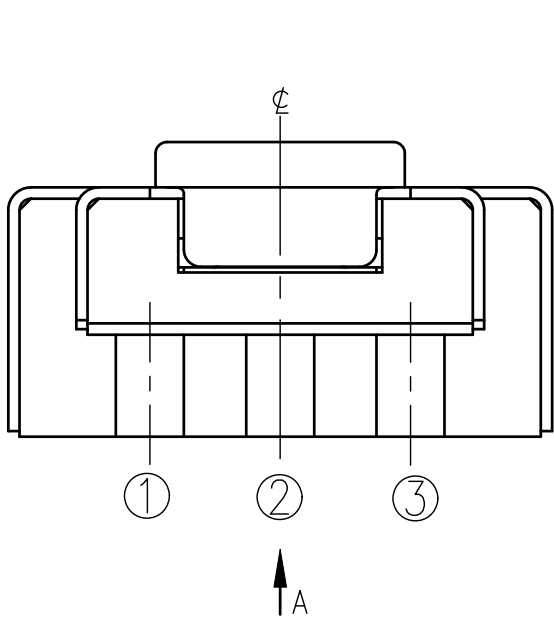
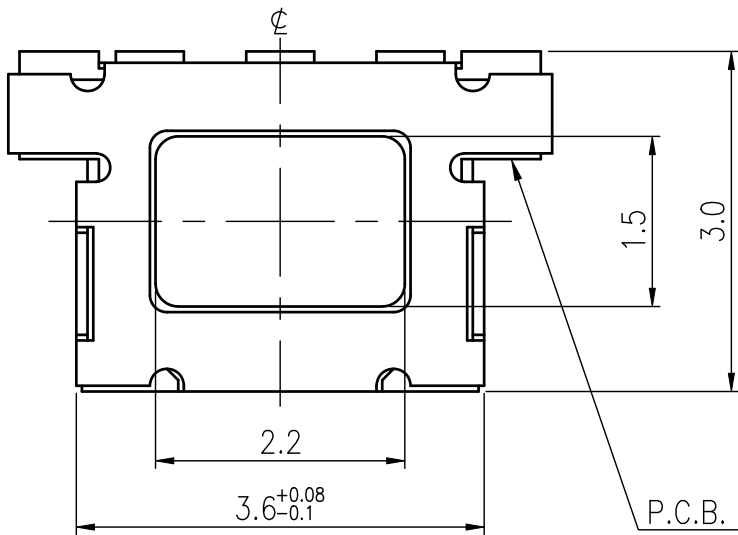
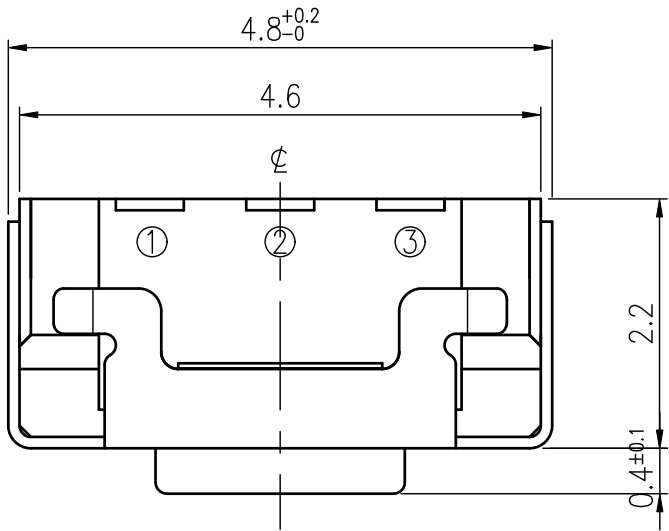


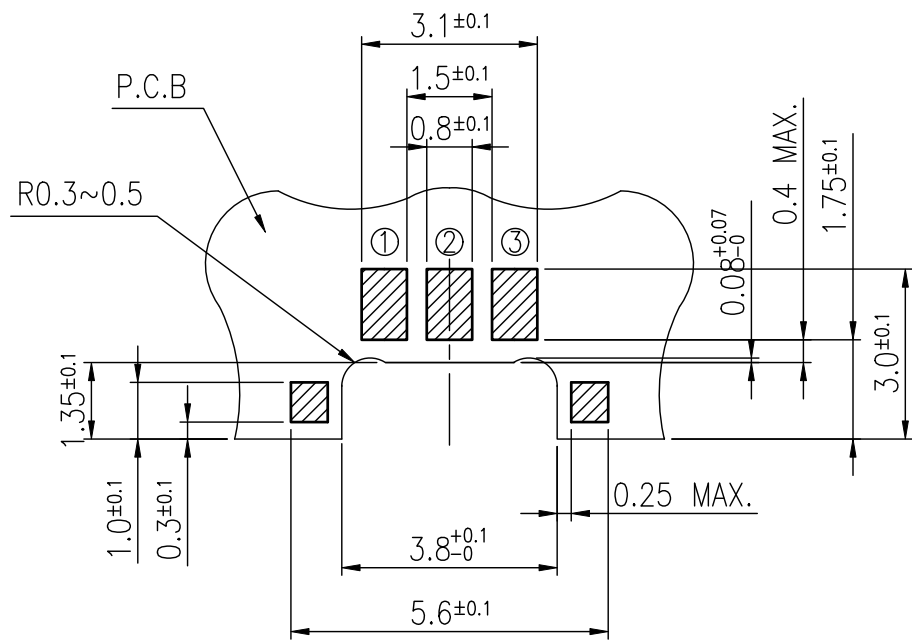
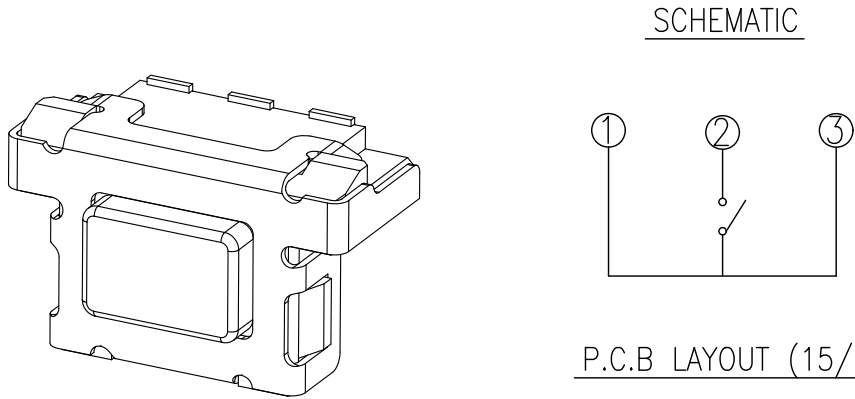
RoHS Compliant

For Reference Only



REVISIONS							
Rev	DESCRIPTION	DATE	DRAWER	REV	DESCRIPTION	DATE	DRAWER
A	Initial Drawing	2020.07.23	Jane Shen	C			
B				D			

SPECIFICATIONS			
RATING	DC15V 20mA	TIMING	
CONTACT RESISTANCE	100mΩ MAX.	OPERATION (TORQUE)	
INSULATION RESISTANCE	DC100V - 100MΩ MIN.	STROKE (ANGLE)	0.15±0.1 mm
WITHSTAND VOLTAGE	AC250V - 1 MINUTE	LIFE	200,000 CYCLES
REMARKS:			



MODEL NO.	OPERATING FORCE
ETC313-DK1G-A160T	160±50gf
ETC313-DK1G-A350T	350±80gf

TOLERANCES UNLESS OTHERWISE SPECIFIED ±0.2			SIGNATURES		DATE	MODEL	
			DRAWN      Jane   Shen		2020.07.23	TITLE  TACT   SWITCH	
			CHECKED				
	UNIT mm	SCALE 15/1	REVIEWED			NO.  SEE MODEL NO.	
			APPROVALS <u>Qiuyuan Chuang</u>		2020.07.23		

TAIWAN MISAKI ELECTRONICS CO., LTD.

## RoHS Compliant

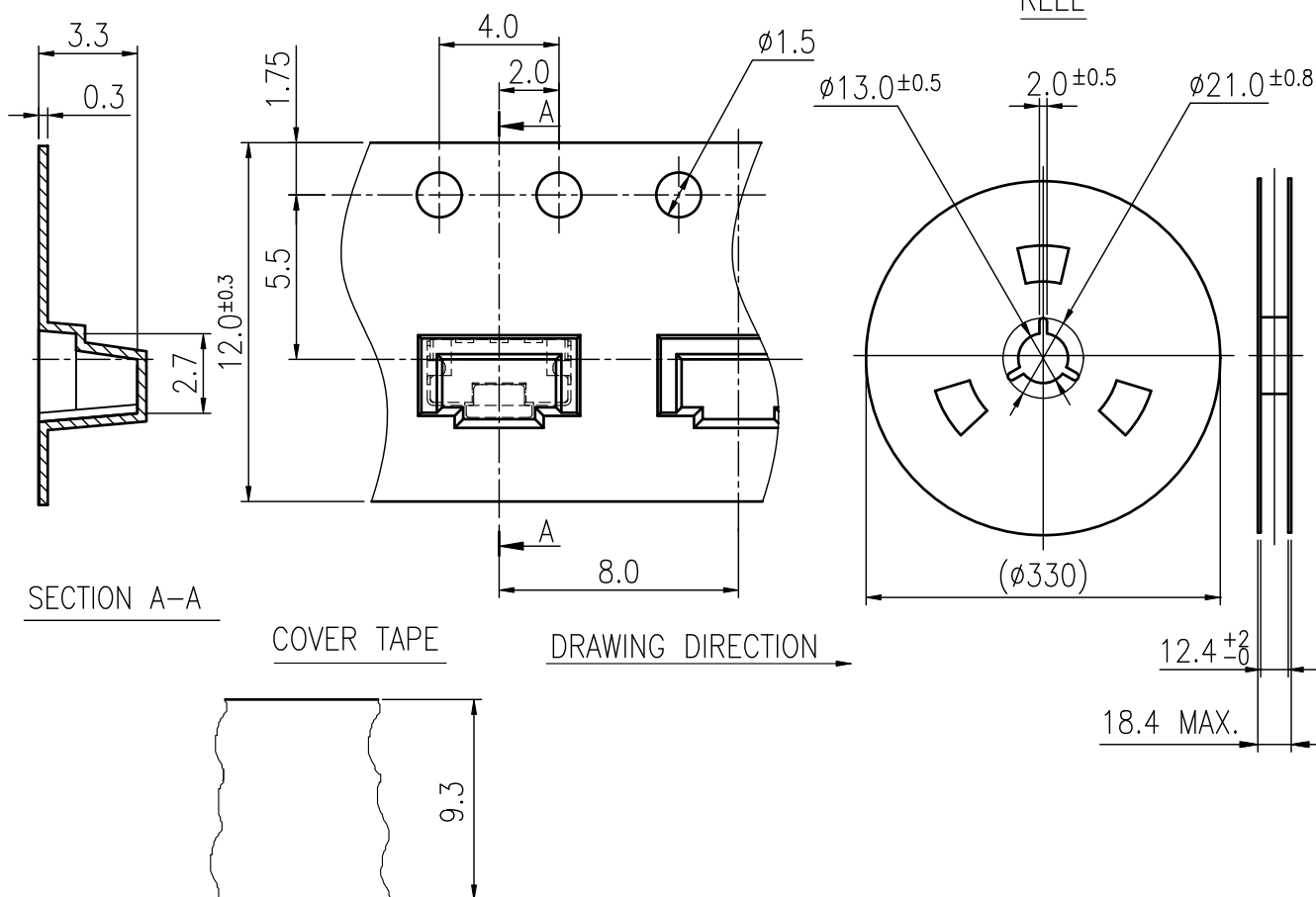
STRUCTURE AND MATERIALS

The diagram illustrates the structure and materials of the device. It shows a cross-section of a substrate with a thin layer (3) and a patterned layer (2). A circular inset (1) shows a magnified view of the patterned layer, revealing a central circular feature and three surrounding rectangular features.

③	COVER TAPE	POLYESTER
②	CARRIER TAPE	POLYSTYRENE
①	REEL	POLYSTYRENE
NO.	PARTS NAME	MATERIALS

2. PACKAGING QUANTITY : 2,200 PCS/REEL
3. MORE THAN 10 EMPTY POCKETS SHOULD BE REMAINED AT BOTH ENDS OF THE CARRIER TAPE FOR EACH REEL.
4. SHORTAGE LESS THAN 10 PCS A REEL IS ACCETABLE BUT MORE THAN 3 RUNNING POCKETS SHORTAGE IS NOT ALLOWED.
5. STRIPPING STRENGTH OF COVER TAPE IS BETWEEN 10 gf TO **130** gf AND STRIPPING ANGLE SHOULD BE WITHIN 165° ~ 180 °.
6. THE PRODUCT IN THE POCKET OF CARRIER TAPE SHOULD BE PLACED IN A SPECIFIED CORRECT POSITION.
7. TAPE AND REEL PER EIA-481.
8. DIMENSIONS :

## REEL



				APPROVED BY	REVIEWED BY	CHECKED BY	DESIGNED BY  Jane Shen	MODEL NO. NTC313-DK1G-A 0T			
								PAGINATE. 1/1		SPEC NO. P-600	
SYM	DESCRIPTION	DATE	APPROVED								