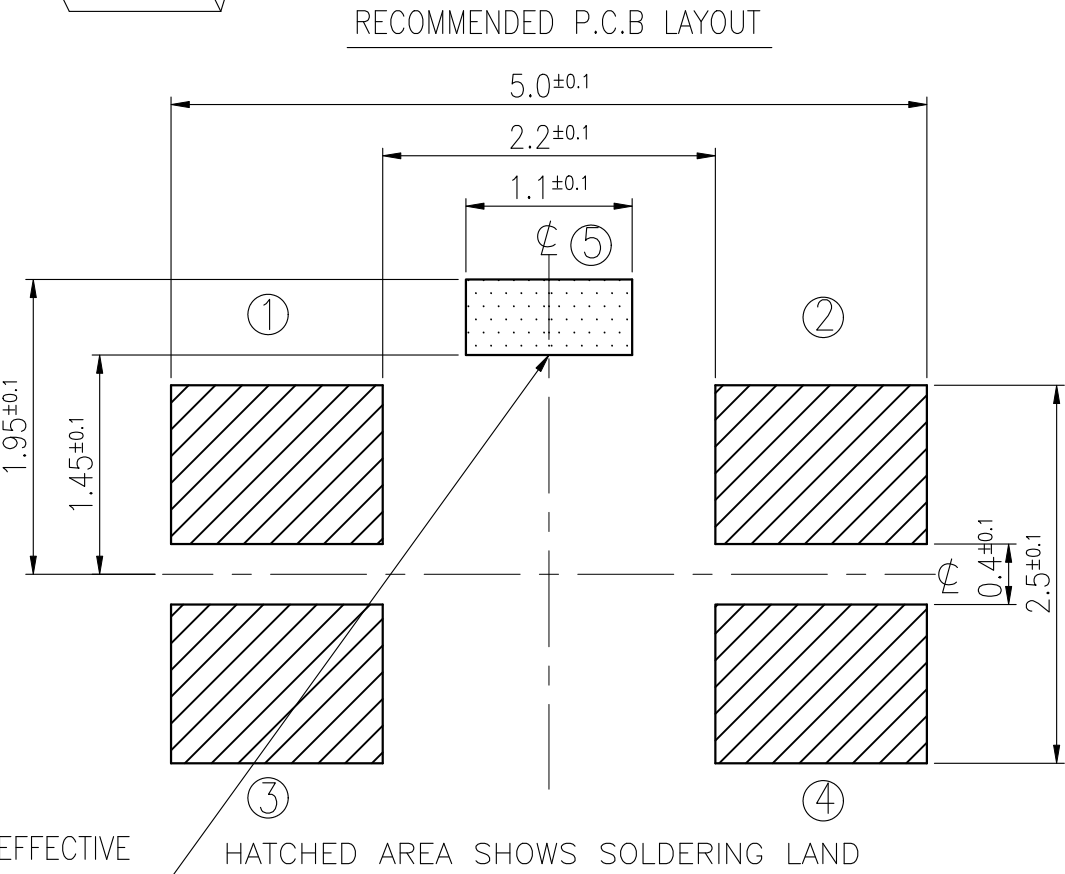
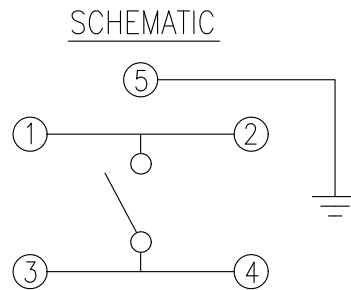
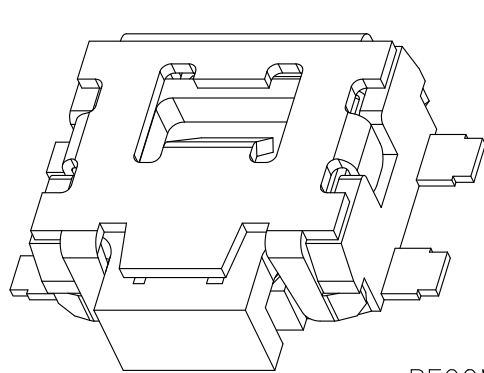
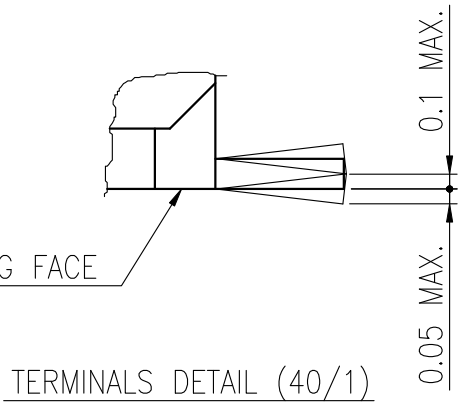
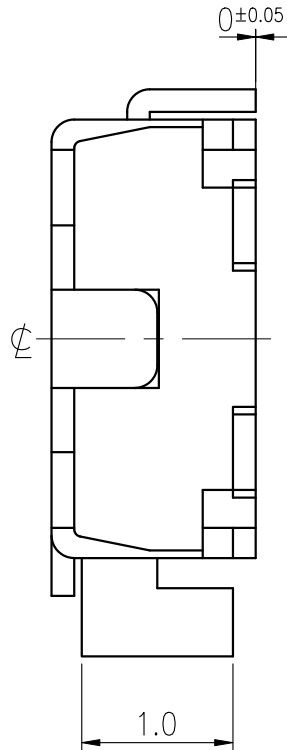
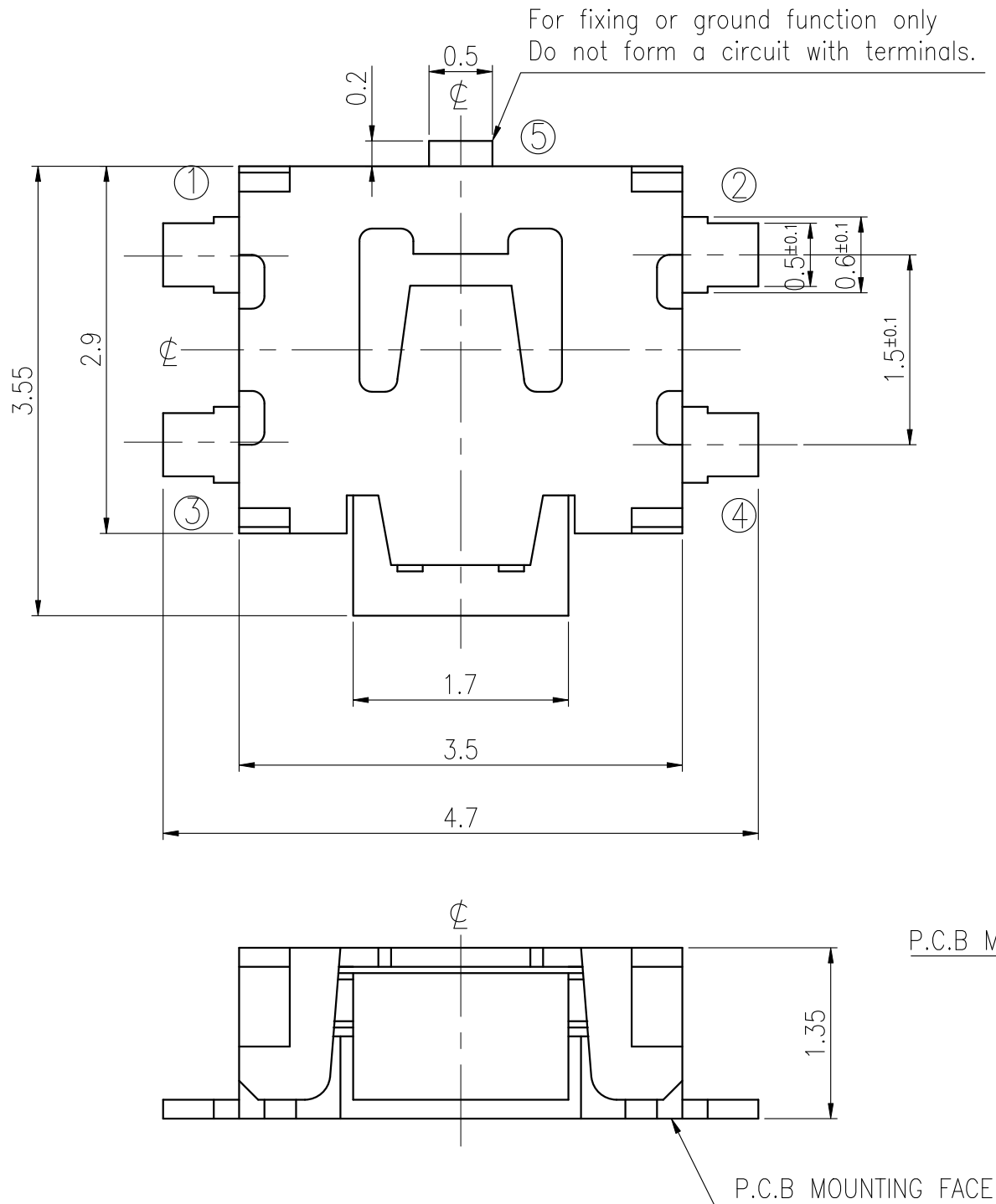


RoHS Compliant



REVISIONS							
Rev	DESCRIPTION	DATE	DRAWER	Rev	DESCRIPTION	DATE	DRAWER
A	Initial Drawing	2013.04.24	Max Chen	C			
B				D			
SPECIFICATIONS							
RATING		DC12V 50mA		TIMING			
CONTACT RESISTANCE		500mΩ MAX.		OPERATION (TORQUE)			
INSULATION RESISTANCE		DC500V - 100MΩ MIN.		STROKE (ANGLE)		0.2 ±0.2mm	
WITHSTAND VOLTAGE		AC250V - 1 MINUTE.		CONTACT RESISTANCE		1Ω MAX.	
REMARKS:				(AFTER 100,000 CYCLES LIFE TEST)			



MODEL NO.	OPERATING FORCE
ETC311-FC1G-A160T	160+70gf - 40gf
ETC311-FC1G-A220T	220+80gf - 70gf

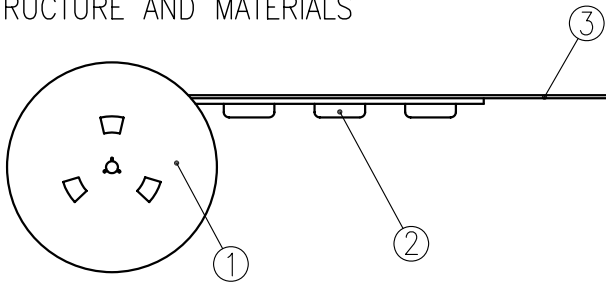
TOLERANCES UNLESS OTHERWISE SPECIFIED ±0.2			SIGNATURES	DATE	MODEL
			DRAWER Max Chen	2013.04.24	TITLE TACT SWITCH
			CHECKED		
			REVIEWED		NO. SEE MODEL NO.
			APPROVALS Dennis Hung	2013.04.24	

TAIWAN MISAKI ELECTRONICS CO., LTD.

THE PACKING SPECIFICATIONS

RoHS Compliant

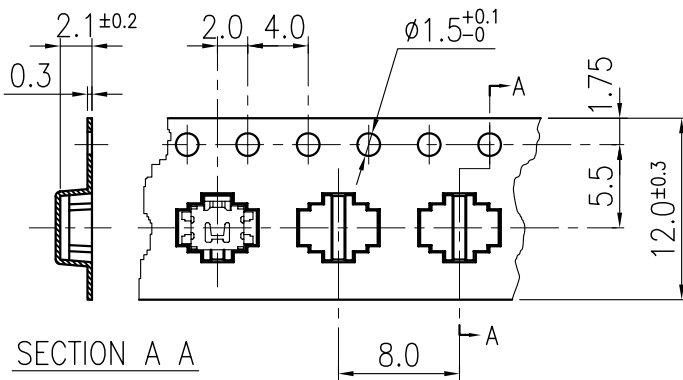
1.STRUCTURE AND MATERIALS



③	COVER TAPE	POLYESTER
②	CARRIER TAPE	POLYSTYRENE
①	REEL	POLYSTYRENE
NO.	PARTS NAME	MATERIALS

- PACKAGING QUANTITY : 3,500 PCS/REEL
- MORE THAN 10 EMPTY POCKETS SHOULD BE REMAINED AT BOTH ENDS OF THE CARRIER TAPE FOR EACH REEL.
- SHORTAGE LESS THAN 10 PCS A REEL IS ACCEPTABLE BUT MORE THAN 3 RUNNING POCKETS SHORTAGE IS NOT ALLOWED.
- STRIPPING STRENGTH OF COVER TAPE IS BETWEEN 10 gf TO 70 gf AND STRIPPING ANGLE SHOULD BE WITHIN 165° ~ 180°.
- THE SWITCH SHOULD NOT BE STAYED IN CARRIER TAPE WHEN CARRIER TAPE UPSIDE DOWN.
- END OF CARRIER TAPE IS APART FROM REEL EASILY.
- THE DIRECTION OF MARK IS FREE.
- DIMENSIONS :

CARRIER TAPE



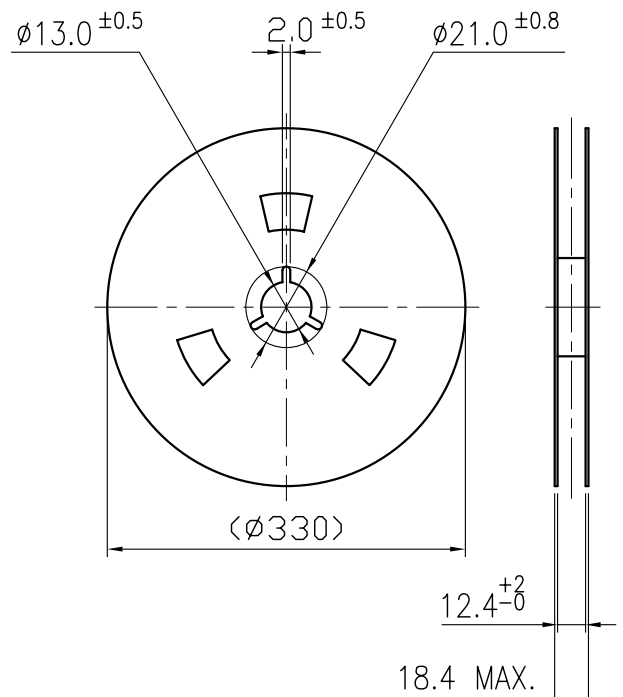
SECTION A A

DRAWING DIRECTION

COVER TAPE



REEL



				APPROVED BY	REVIEWED BY	CHECKED BY	DESIGNED BY	MODEL NO.
						Ken Lin	Max Chen	NTC311-FC1G-A160T
						2007.05.18	2007.05.18	PAGINATE.
								1/1
								SPEC NO.
								P-380
SYM	DISCRIPTION	DATE	APPROVED					

TAIWAN MISAKI ELECTRONICS CO.,LTD.