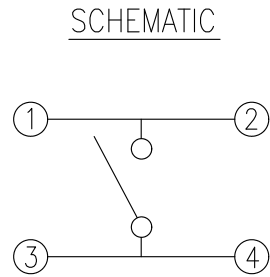
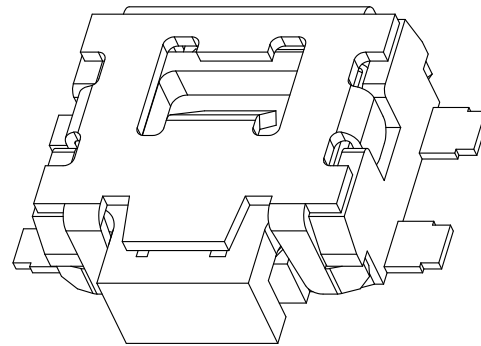
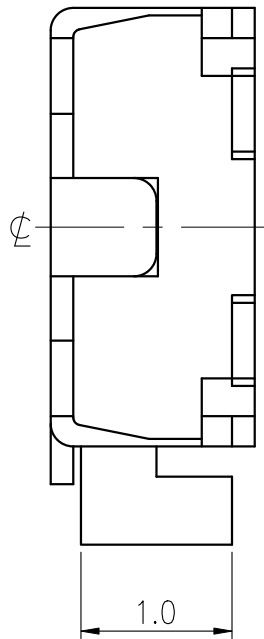
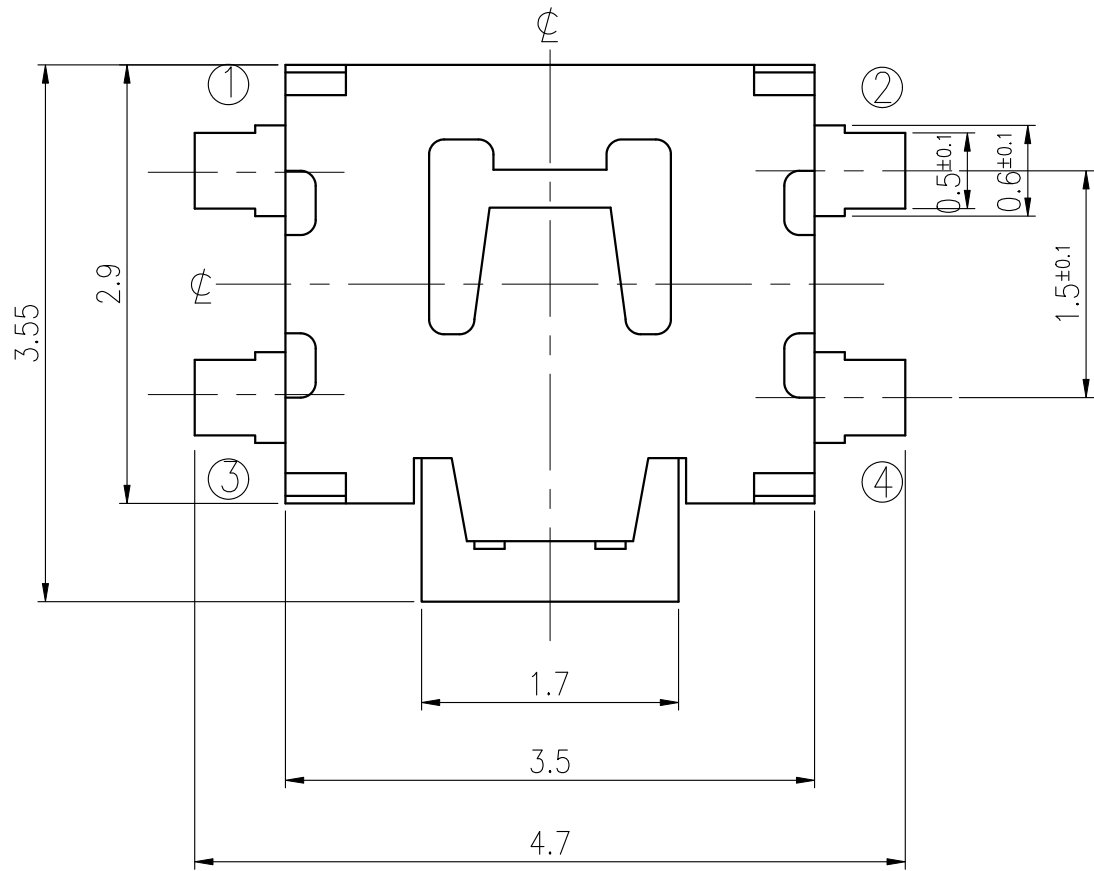


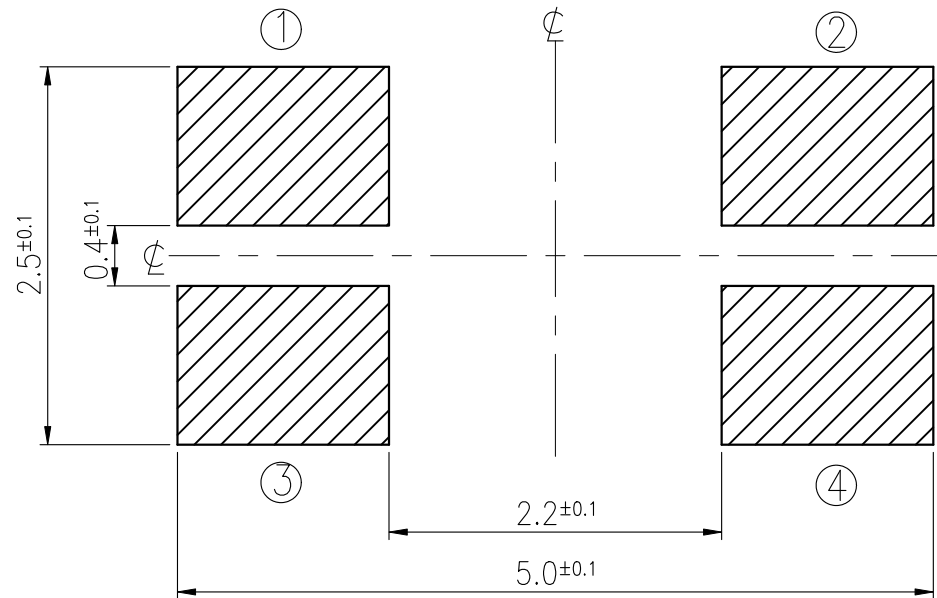
RoHS Compliant



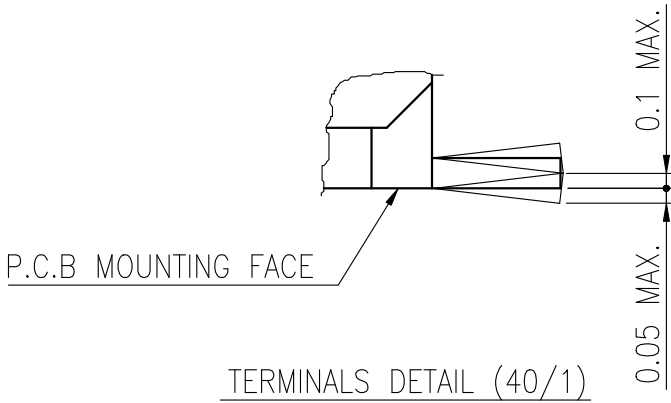
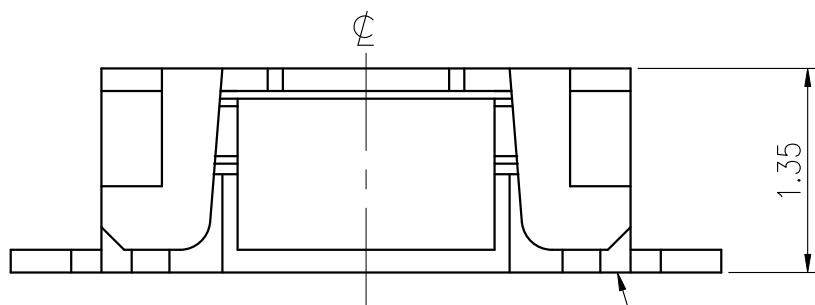
REVISIONS							
Rev	DESCRIPTION	DATE	DRAWER	Rev	DESCRIPTION	DATE	DRAWER
A	Initial Drawing	2013.04.24	Max Chen	C			
B				D			
SPECIFICATIONS							
RATING		DC12V 50mA		TIMING			
CONTACT RESISTANCE		500mΩ MAX.		OPERATION (TORQUE)			
INSULATION RESISTANCE		DC500V - 100MΩ MIN.		STROKE (ANGLE)		0.2 ±0.2mm	
WITHSTAND VOLTAGE		AC250V - 1 MINUTE.		CONTACT RESISTANCE		1Ω MAX.	
REMARKS:				(AFTER		100,000 CYCLES LIFE TEST)	



RECOMMENDED P.C.B LAYOUT



HATCHED AREA SHOWS SOLDERING LAND



MODEL NO.	OPERATING FORCE
ETC311-EC1G-A160T	160+70gf - 40gf
ETC311-EC1G-A220T	220+80gf - 70gf

TOLERANCES UNLESS OTHERWISE SPECIFIED ±0.2		SIGNATURES		DATE	MODEL
		DRAWER	Max Chen	2013.04.24	TITLE
	UNIT	CHECKED			TACT SWITCH
	mm	REVIEWED			
	SCALE	APPROVALS			
	20/1	Dennis Hung		2013.04.24	NO. SEE MODEL NO.

TAIWAN MISAKI ELECTRONICS CO., LTD.

RoHS Compliant

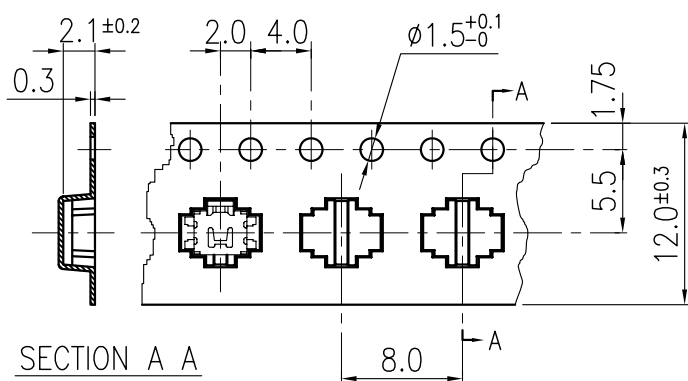
STRUCTURE AND MATERIALS

The diagram illustrates the structure and materials of the device. It shows a cross-section of a substrate (3) with a thin layer (2) and a circular region (1) containing three small components.

③	COVER TAPE	POLYESTER
②	CARRIER TAPE	POLYSTYRENE
①	REEL	POLYSTYRENE
NO.	PARTS NAME	MATERIALS

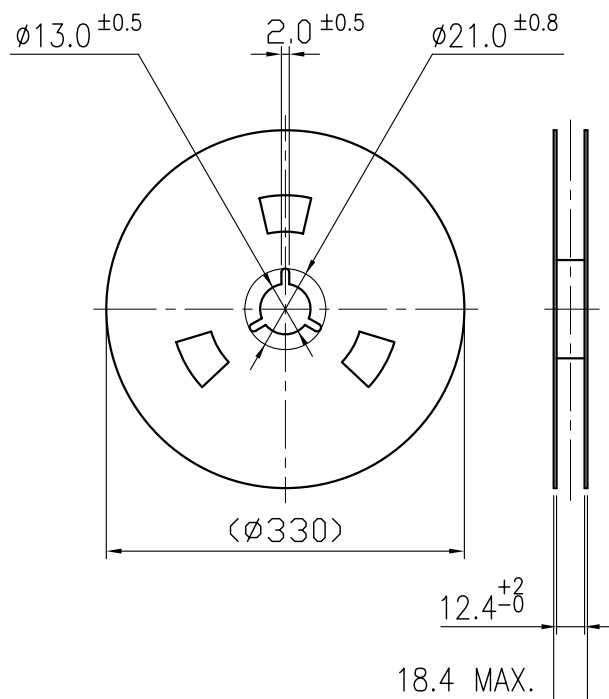
2. PACKAGING QUANTITY : 3,500 PCS/REEL
3. MORE THAN 10 EMPTY POCKETS SHOULD BE REMAINED AT BOTH ENDS OF THE CARRIER TAPE FOR EACH REEL.
4. SHORTAGE LESS THAN 10 PCS A REEL IS ACCEPTABLE BUT MORE THAN 3 RUNNING POCKETS SHORTAGE IS NOT ALLOWED.
5. STRIPPING STRENGTH OF COVER TAPE IS BETWEEN 10 gf TO 70 gf AND STRIPPING ANGLE SHOULD BE WITHIN $165^{\circ} \sim 180^{\circ}$.
6. THE SWITCH SHOULD NOT BE STAYED IN CARRIER TAPE WHEN CARRIER TAPE UPSIDE DOWN.
7. END OF CARRIER TAPE IS APART FROM REEL EASILY.
8. THE DIRECTION OF MARK IS FREE.
9. DIMENSIONS :


REEL



DRAWING DIRECTION

COVER TAPE



				APPROVED BY	REVIEWED BY	CHECKED BY	DESIGNED BY	MODEL NO.			
				 2007.05.18	Ken Lin 2007.05.18	Max Chen 2007.05.18	NTC311-EC1G-A220T	PAGINATE.			
											SPEC NO.
SYM	DISCRPTION	DATE	APPROVED					1/1			
								P-380			

TAIWAN MISAKI ELECTRONICS CO.,LTD.