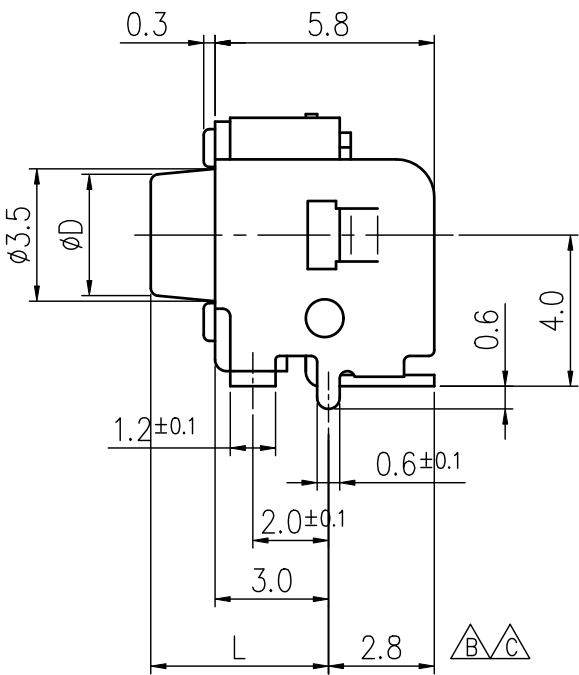
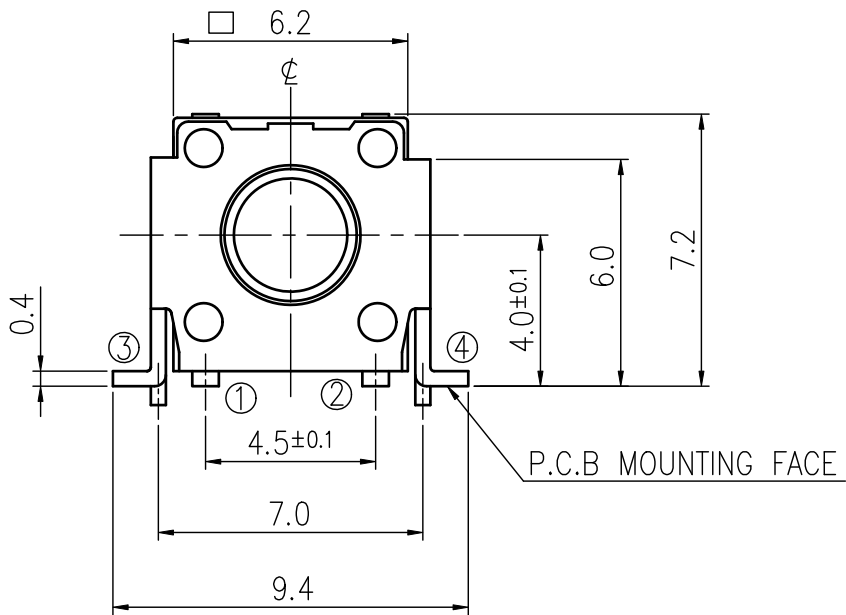
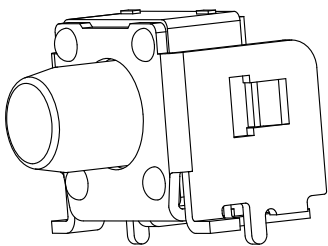
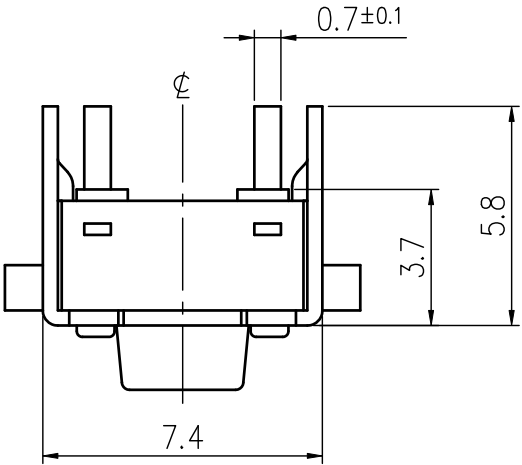
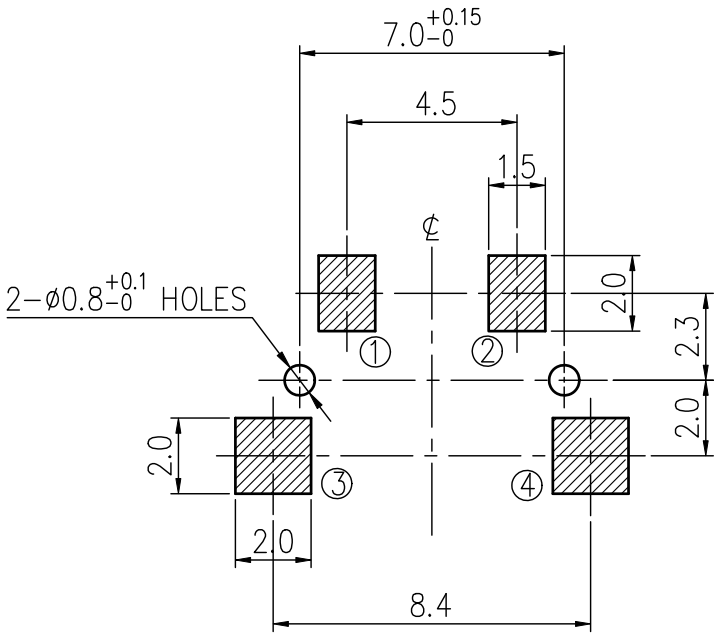


RoHS Compliant

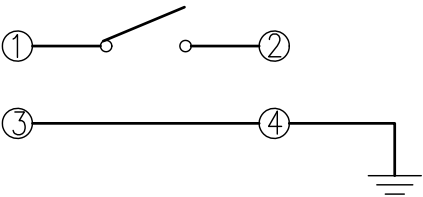


P.C.B LAYOUT



HATCHED AREA SHOWS SOLDERING LAND
(TOLERANCES UNLESS OTHERWISE SPECIFIED ±0.1)

SCHEMATIC



REVISIONS

Rev	DESCRIPTION	DATE	DRAWER	Rev	DESCRIPTION	DATE	DRAWER
A	Initial Drawing	2017.04.11	Jane Shen	C	Change Drawing	2018.09.04	Jane Shen
B	Change Drawing	2018.04.10	Jane Shen	D			

SPECIFICATIONS

RATING	DC12V 50mA	TIMING	
CONTACT RESISTANCE	100m Ω MAX.	OPERATION (TORQUE)	
INSULATION RESISTANCE	DC500V - 100M Ω MIN.	STROKE (ANGLE)	0.25 ±0.2 mm
WITHSTAND VOLTAGE	AC250V - 1 MINUTE.	LIFE	CYCLES
REMARKS:			

MODEL NO.	A		B		C		F		OPERATING FORCE	LIFE
	L	Ø D	L	Ø D	L	Ø D	L	Ø D		
ETC304-DP1G- 100T									100±50gf	1,000,000
ETC304-DP1G- 160T	3.6	3.5	4.3	3.5	8.8	3.0	6.3	3.0	160±50gf	1,000,000
ETC304-DP1G- 260T									260±50gf	200,000

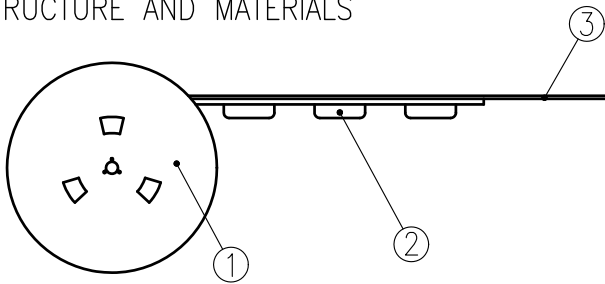
TOLERANCES UNLESS OTHERWISE SPECIFIED ±0.2			SIGNATURES		DATE	MODEL	
			DRAWN	Jane Shen	2018.09.04	TITLE	TACT SWITCH
	UNIT mm	SCALE 5/1	CHECKED			NO.	SEE MODEL NO.
			REVIEWED	Landry Su	2018.09.04		
			APPROVALS	Dennis Hung	2018.09.04		

TAIWAN MISAKI ELECTRONICS CO., LTD.

THE PACKING SPECIFICATIONS

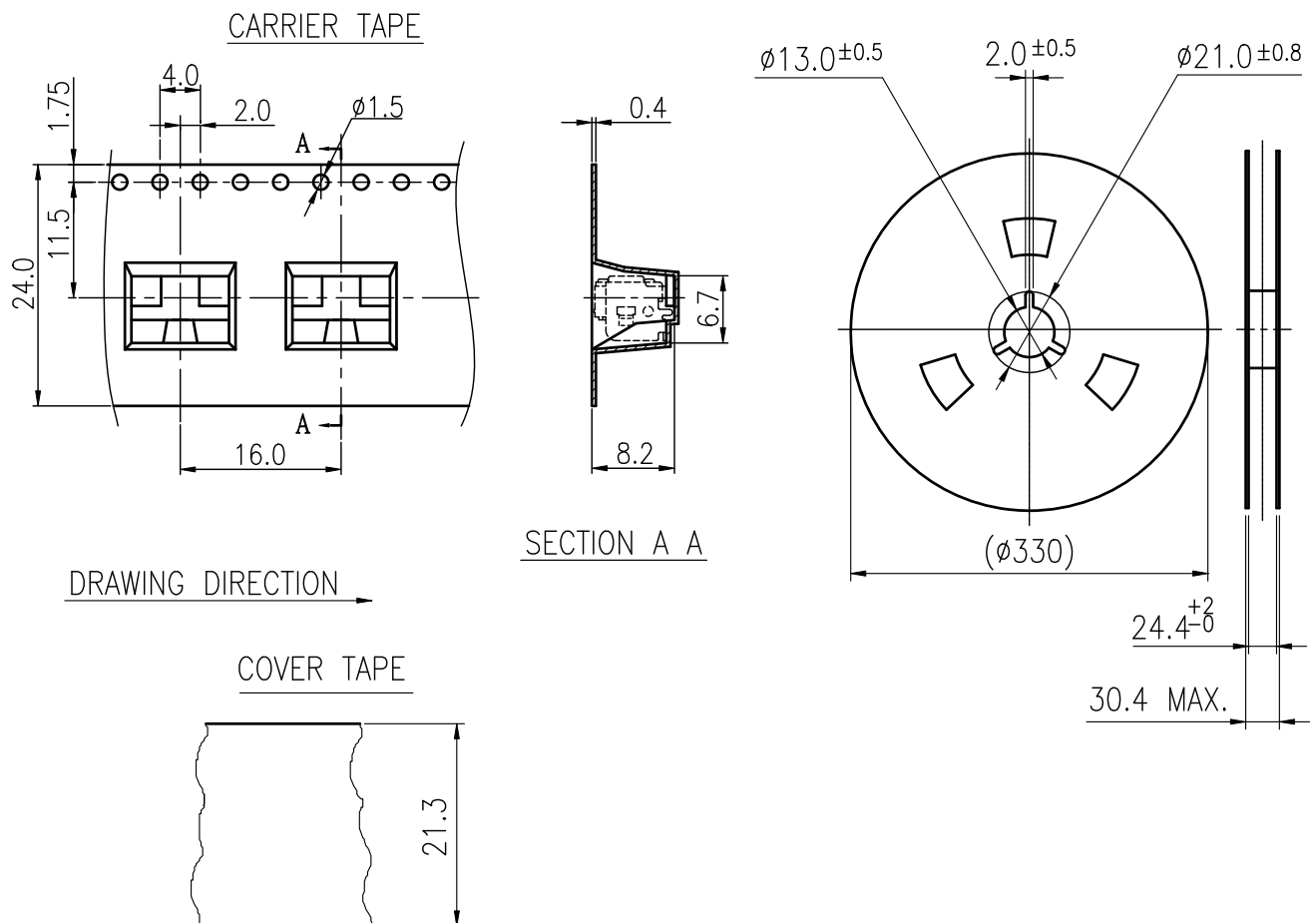
RoHS Compliant

1.STRUCTURE AND MATERIALS



③	COVER TAPE	POLYESTER
②	CARRIER TAPE	POLYSTYRENE
①	REEL	POLYSTYRENE
NO.	PARTS NAME	MATERIALS

- PACKAGING QUANTITY : 500 PCS/REEL
- MORE THAN 10 EMPTY POCKETS SHOULD BE REMAINED AT BOTH ENDS OF THE CARRIER TAPE FOR EACH REEL.
- SHORTAGE LESS THAN 10 PCS A REEL IS ACCETABLE BUT MORE THAN 3 RUNNING POCKETS SHORTAGE IS NOT ALLOWED.
- STRIPPING STRENGTH OF COVER TAPE IS BETWEEN 10 gf TO 130 gf AND STRIPPING ANGLE SHOULD BE WITHIN 165° ~ 180° .
- THE PRODUCT IN THE POCKET OF CARRIER TAPE SHOULD BE PLACED IN A SPECIFIED CORRECT POSITION.
- TAPE AND REEL PER EIA-481.
- DIMENSIONS :



				APPROVED BY	REVIEWED BY	CHECKED BY	DESIGNED BY	MODEL NO.
								NTC304-DP1G-A160T
								PAGINATE.
								1/1
								SPEC NO.
								P-153
SYM	DISCRIPTION	DATE	APPROVED					

TAIWAN MISAKI ELECTRONICS CO.,LTD.