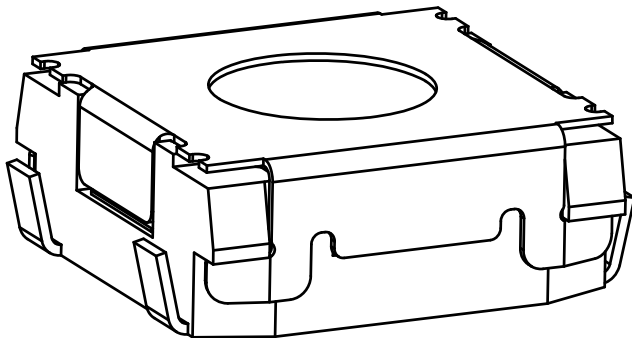
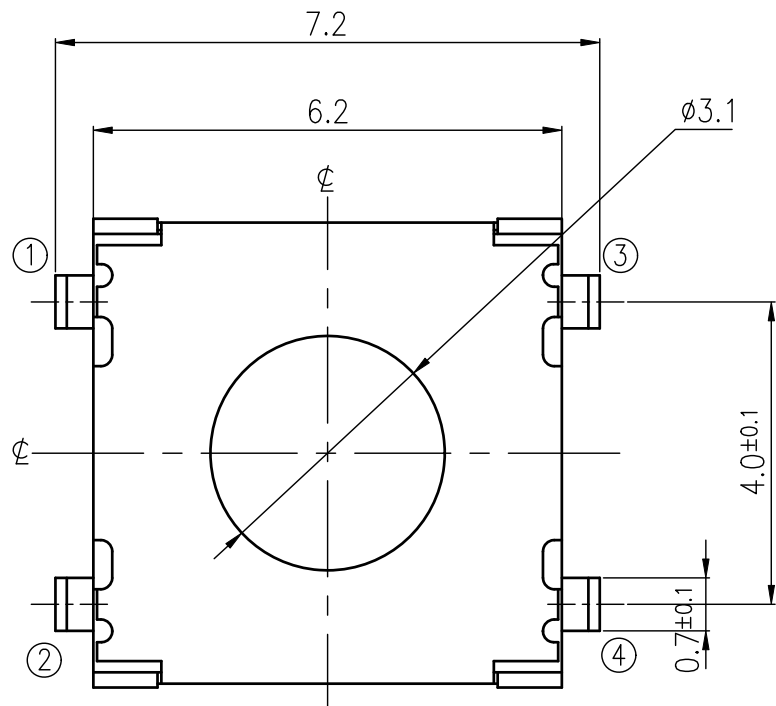
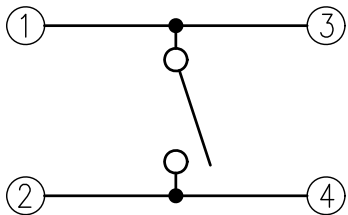


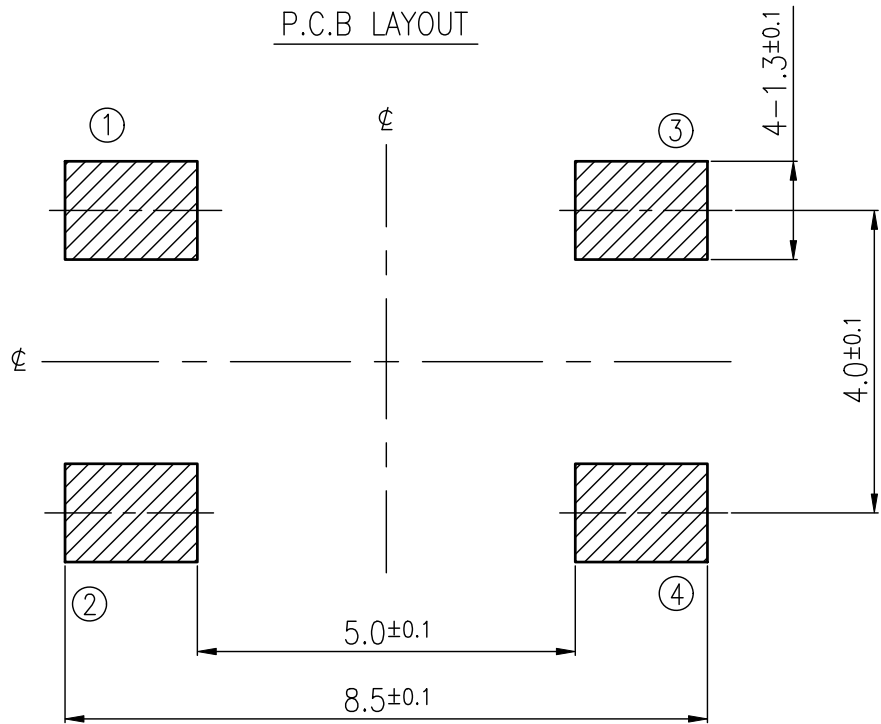
RoHS Compliant



SCHEMATIC

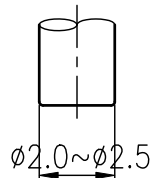
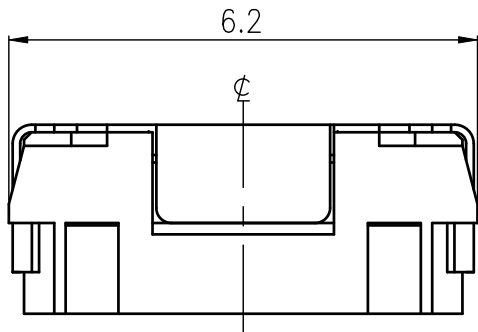
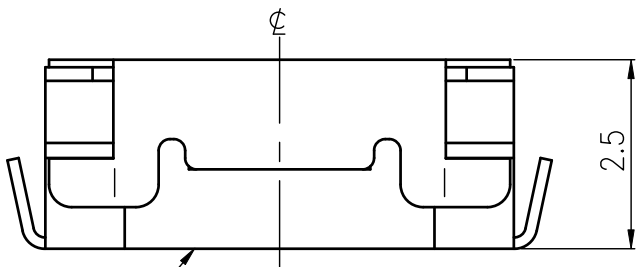


P.C.B LAYOUT

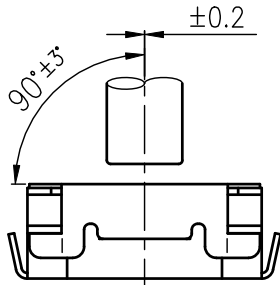


HATCHED AREA SHOWS SOLDERING LAND

P.C.B MOUNTING FACE



SHAPE OF TEST POLE



RESTRICTION IN OPERATION

REVISIONS							
Rev	DESCRIPTION	DATE	DRAWER	Rev	DESCRIPTION	DATE	DRAWER
A	Initial Drawing	2016.03.18	Jane Shen	C			
B				D			
SPECIFICATIONS							
RATING		DC12V 50mA		TIMING			
CONTACT RESISTANCE		100mΩ MAX.		OPERATION (TORQUE)		320±50gf	
INSULATION RESISTANCE		DC500V-100MΩ MIN.		STROKE (ANGLE)		0.4±0.15mm	
WITHSTAND VOLTAGE		AC250V-1 MINUTE		CONTACT RESISTANCE		2Ω MAX.	
REMARKS:				(AFTER 200,000 CYCLES LIFE TEST)			

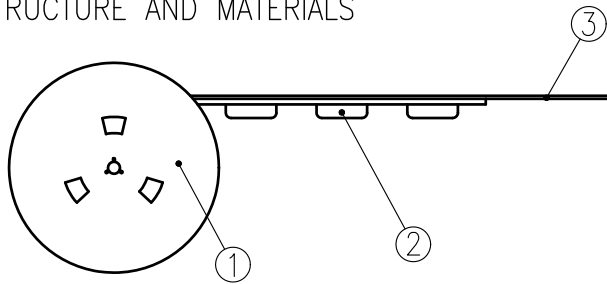
TOLERANCES UNLESS OTHERWISE SPECIFIED ±0.2			SIGNATURES		DATE	MODEL
			DRAWER	Jane Shen	2016.03.18	TITLE
			CHECKED			TACT SWITCH
			REVIEWED			NO.
			APPROVALS	Dennis Hung	2016.03.18	ETC202-BB1J-X260T

TAIWAN MISAKI ELECTRONICS CO., LTD.

THE PACKING SPECIFICATIONS

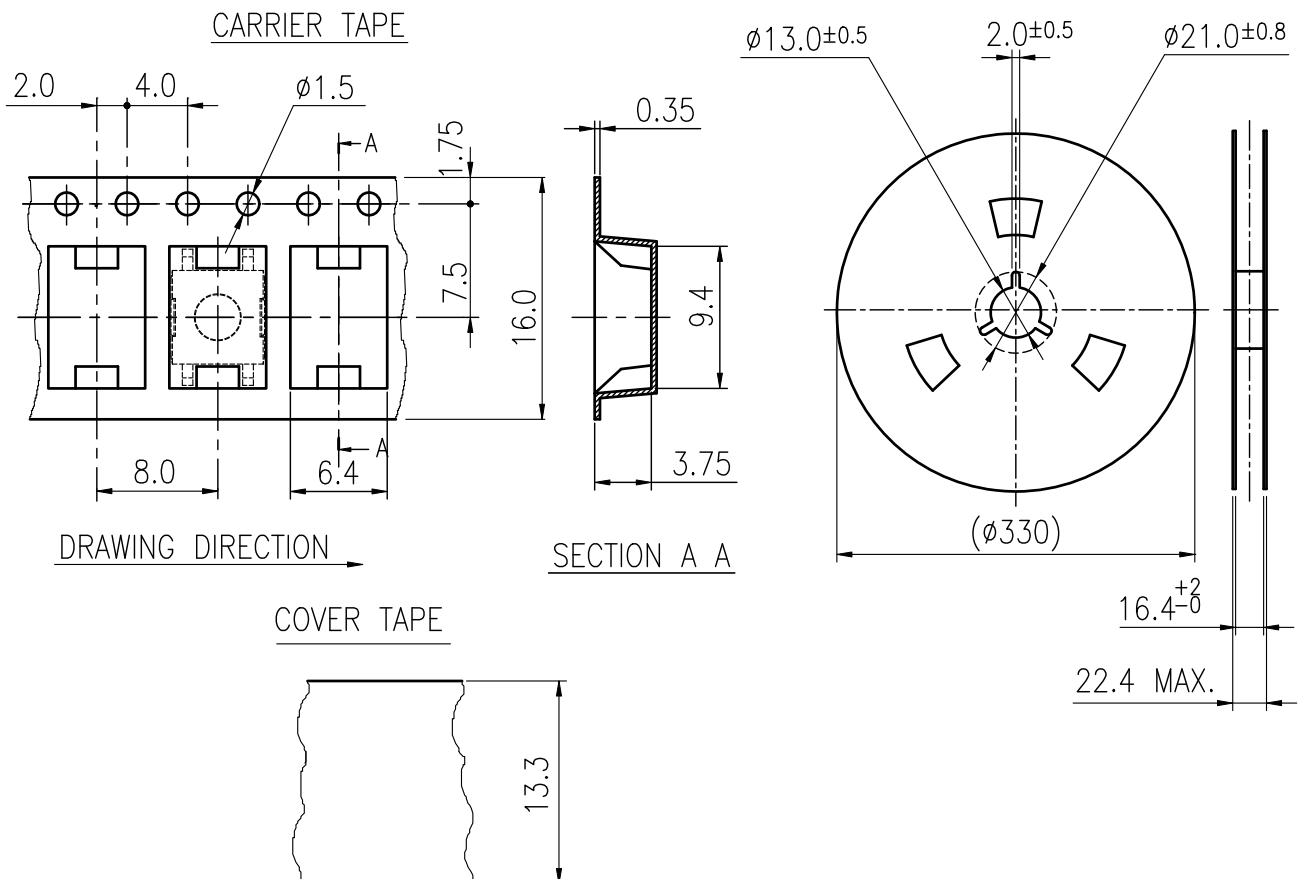
RoHS Compliant

1. STRUCTURE AND MATERIALS



③	COVER TAPE	POLYESTER
②	CARRIER TAPE	POLYSTYRENE
①	REEL	POLYSTYRENE
NO.	PARTS NAME	MATERIALS

- PACKAGING QUANTITY : 2,000 PCS/REEL
- MORE THAN 10 EMPTY POCKETS SHOULD BE REMAINED AT BOTH ENDS OF THE CARRIER TAPE FOR EACH REEL.
- SHORTAGE LESS THAN 10 PCS A REEL IS ACCEPTABLE BUT MORE THAN 3 RUNNING POCKETS SHORTAGE IS NOT ALLOWED.
- STRIPPING STRENGTH OF COVER TAPE IS BETWEEN 10 gf TO 130 gf AND STRIPPING ANGLE SHOULD BE WITHIN 165° ~ 180°.
- THE PRODUCT IN THE POCKET OF CARRIER TAPE SHOULD BE PLACED IN A SPECIFIED CORRECT POSITION.
- TAPE AND REEL PER EIA-481.
- DIMENSIONS :



				APPROVED BY	REVIEWED BY	CHECKED BY	DESIGNED BY	MODEL NO.
								NTC202-BB1J-X
								PAGINATE.
								1/1
								SPEC NO.
								P-521
SYM	DISCRIPTION	DATE	APPROVED					

TAIWAN MISAKI ELECTRONICS CO.,LTD.