

RoHS Compliant

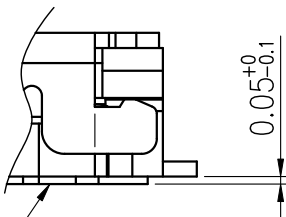
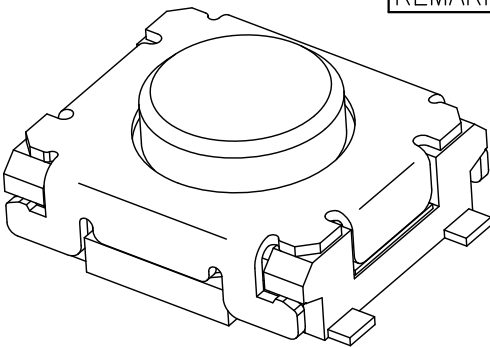
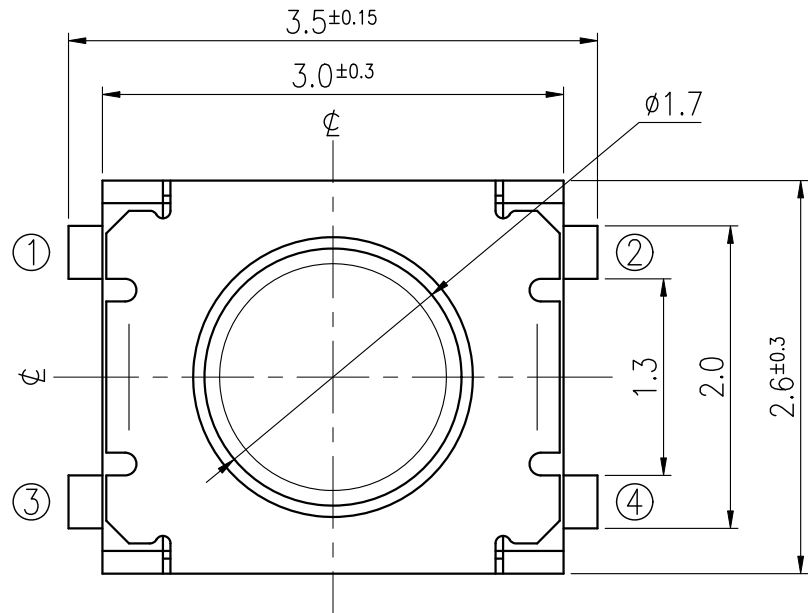
For Reference Only

REVISIONS

Rev	DESCRIPTION	DATE	DRAWER	Rev	DESCRIPTION	DATE	DRAWER
A	Initial Drawing	2013.03.27	Catherine Lee	C			
B				D			

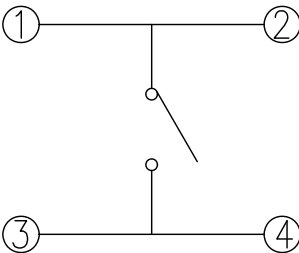
SPECIFICATIONS

RATING	DC12V 50mA.	TIMING	
CONTACT RESISTANCE	100mΩ MAX.	OPERATION (TORQUE)	160±50 gf
INSULATION RESISTANCE	DC500V – 100MΩ MIN.	STROKE (ANGLE)	0.15±0.1 mm
WITHSTAND VOLTAGE	AC250V – 1 MINUTE.	CONTACT RESISTANCE	2Ω MAX.
REMARKS:		(AFTER 500,000 CYCLES LIFE TEST)	



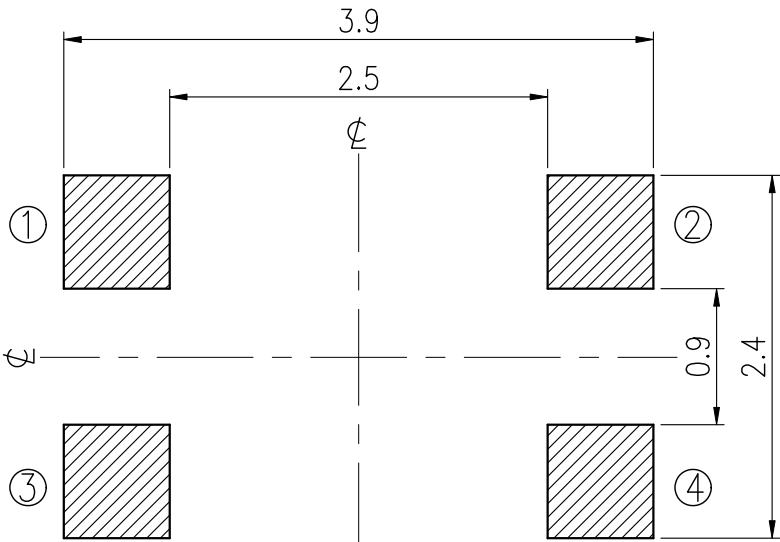
P.C.B MOUNTING FACE

SCHEMATIC

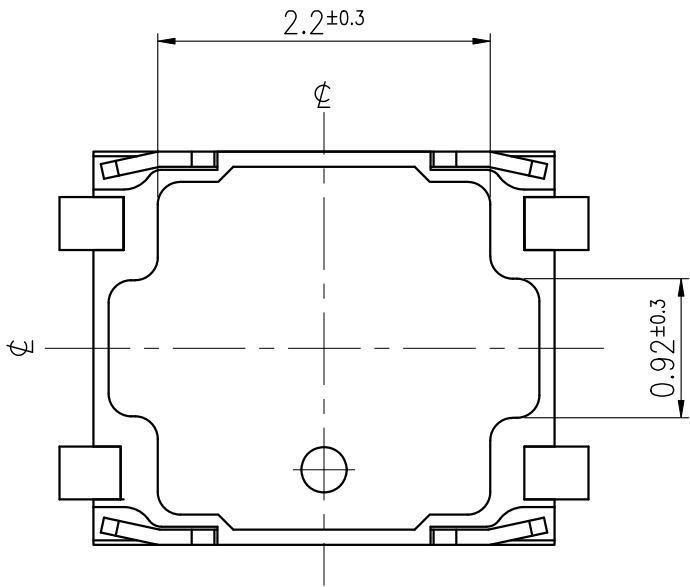
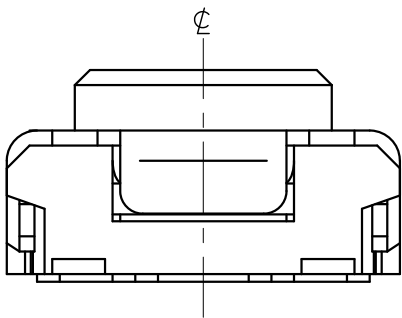
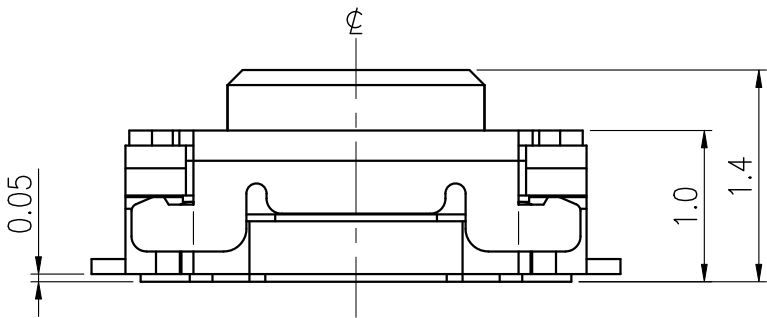


TERMINALS DETAIL

P.C.B LAYOUT



HATCHED AREA SHOWS SOLDERING LAND



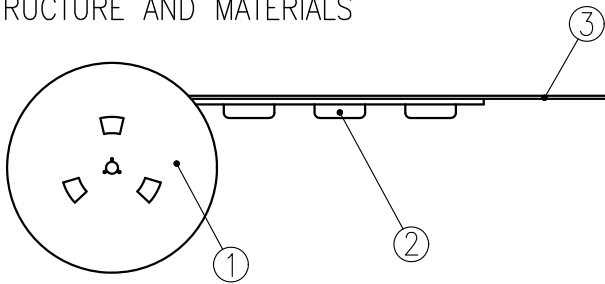
TOLERANCES UNLESS OTHERWISE SPECIFIED ±0.1	SIGNATURES		DATE	MODEL
	DRAWER	Catherine Lee	2013.03.27	TACT SWITCH
	CHECKED			
	UNIT	mm	SCALE	20/1
	REVIEWED			
	APPROVALS	Dennis Hung	2013.03.27	NO. ETC021-AA1G-A160TX

TAIWAN MISAKI ELECTRONICS CO., LTD.

THE PACKING SPECIFICATIONS

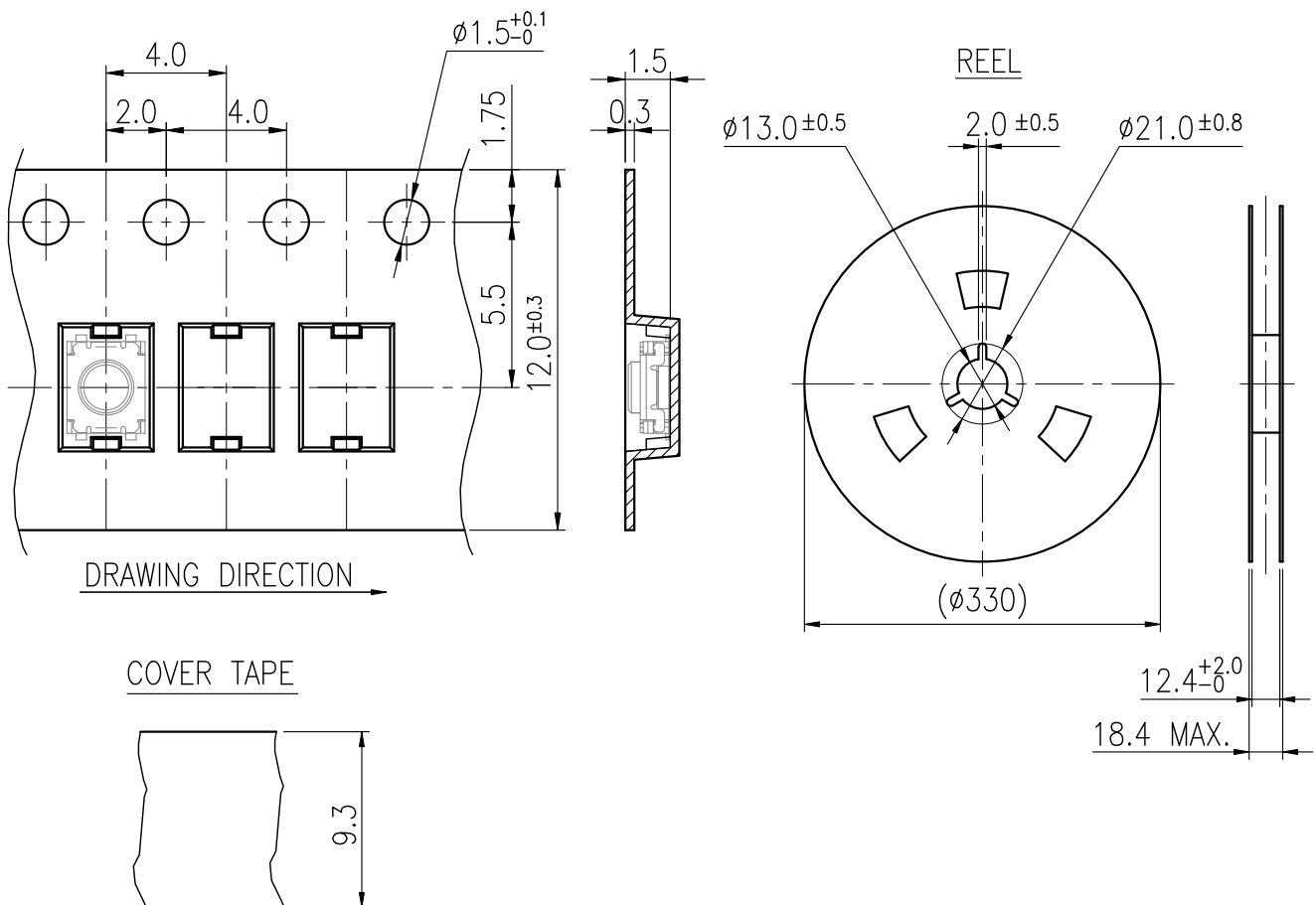
RoHS Compliant

1.STRUCTURE AND MATERIALS



③	COVER TAPE	POLYESTER
②	CARRIER TAPE	POLYSTYRENE
①	REEL	POLYSTYRENE
NO.	PARTS NAME	MATERIALS

- PACKAGING QUANTITY : 9,500 PCS/REEL
- MORE THAN 10 EMPTY POCKETS SHOULD BE REMAINED AT BOTH ENDS OF THE CARRIER TAPE FOR EACH REEL.
- SHORTAGE LESS THAN 10 PCS A REEL IS ACCETABLE BUT MORE THAN 3 RUNNING POCKETS SHORTAGE IS NOT ALLOWED.
- STRIPPING STRENGTH OF COVER TAPE IS BETWEEN 10 gf TO 70 gf AND STRIPPING ANGLE SHOULD BE WITHIN 165° ~ 180°.
- THE PRODUCT IN THE POCKET OF CARRIER TAPE SHOULD BE PLACED IN A SPECIFIED CORRECT POSITION.
- TAPE AND REEL PER EIA-481.
- DIMENSIONS :



				APPROVED BY	REVIEWED BY	CHECKED BY	DESIGNED BY	MODEL NO.
				Dennis Hung			Catherine Lee	NTC021-AA1G-A_160TX
				2012.05.15			2013.05.09	PAGINATE.
								1/1
								SPEC NO.
								P-734
SYM	DISCRPTION	DATE	APPROVED					

TAIWAN MISAKI ELECTRONICS CO.,LTD.