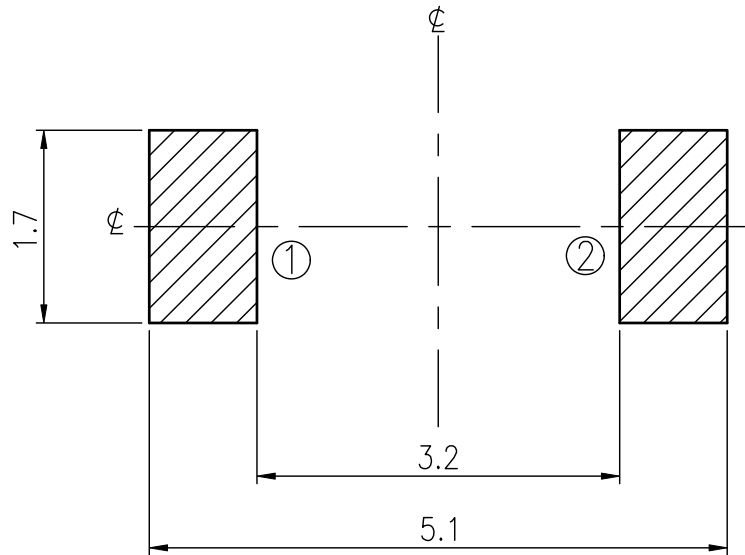
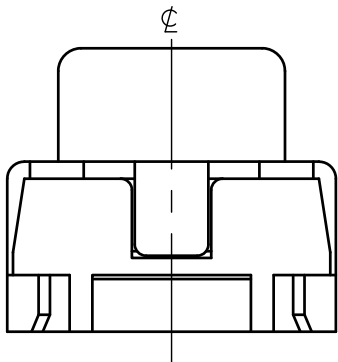
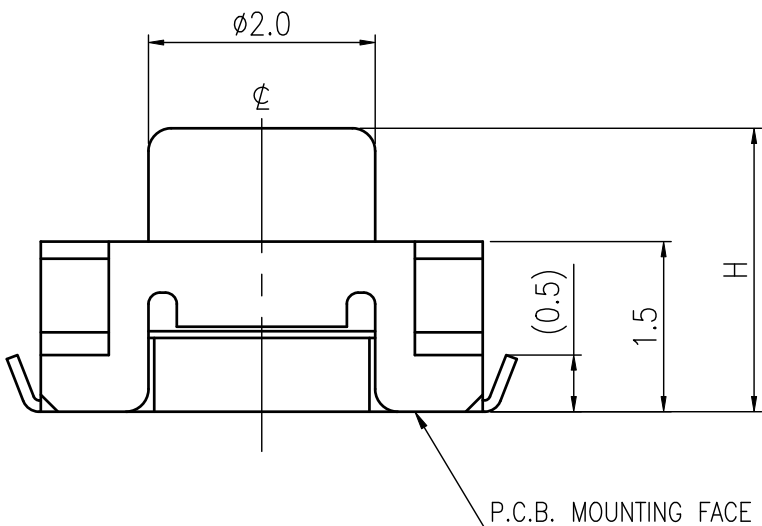
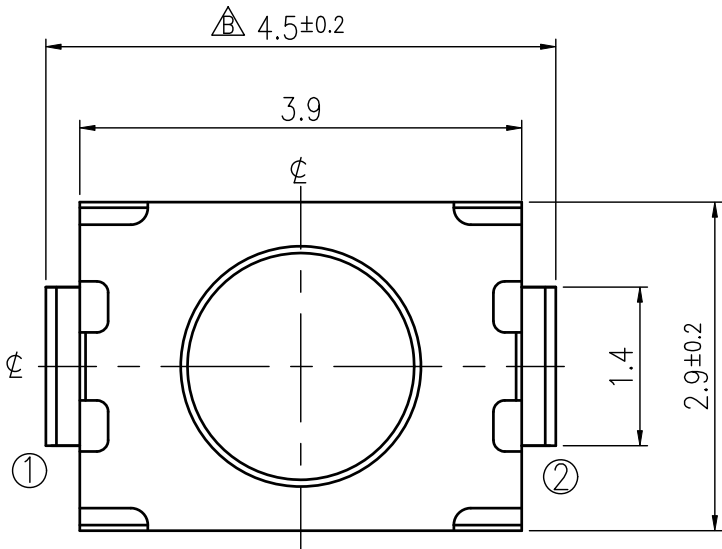
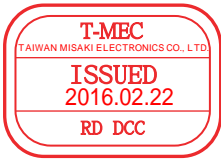


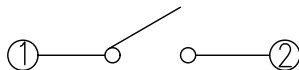
RoHS Compliant



MODEL NO.	OPERATING FORCE	H	LIFE
ETC018-CC1J-A160T	160±50gf	2.0	200,000
ETC018-CC1J-B160T		2.5	
ETC018-CC1J-A250T	250±50gf	2.0	100,000
ETC018-CC1J-B250T		2.5	

REVISIONS							
Rev	DESCRIPTION	DATE	DRAWER	Rev	DESCRIPTION	DATE	DRAWER
A	Initial Drawing	2014.03.24	Jane Shen	C			
B	Change Drawing	2016.02.19	Jane Shen	D			
SPECIFICATIONS							
RATING		DC12V 50mA		TIMING			
CONTACT RESISTANCE		100mΩ MAX.		OPERATION (TORQUE)			
INSULATION RESISTANCE		DC500V-100MΩ MIN.		STROKE (ANGLE)		0.2±0.1 mm	
WITHSTAND VOLTAGE		AC100V-1 MINUTE		CONTACT RESISTANCE		2Ω MAX.	
REMARKS:				(AFTER		CYCLES LIFE TEST)	

SCHEMATIC



P.C.B MOUNTING PLAN

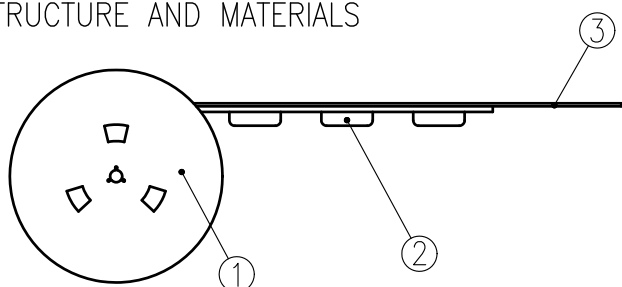
TOLERANCES UNLESS OTHERWISE SPECIFIED ±0.1			SIGNATURES		DATE	MODEL
			DRAWER	Jane Shen	2016.02.19	TACT SWITCH
			CHECKED			
	UNIT mm	SCALE 15/1	REVIEWED			NO.
			APPROVALS Dennis Hung		2016.02.22	See Model No.

TAIWAN MISAKI ELECTRONICS CO., LTD.

THE PACKING SPECIFICATIONS

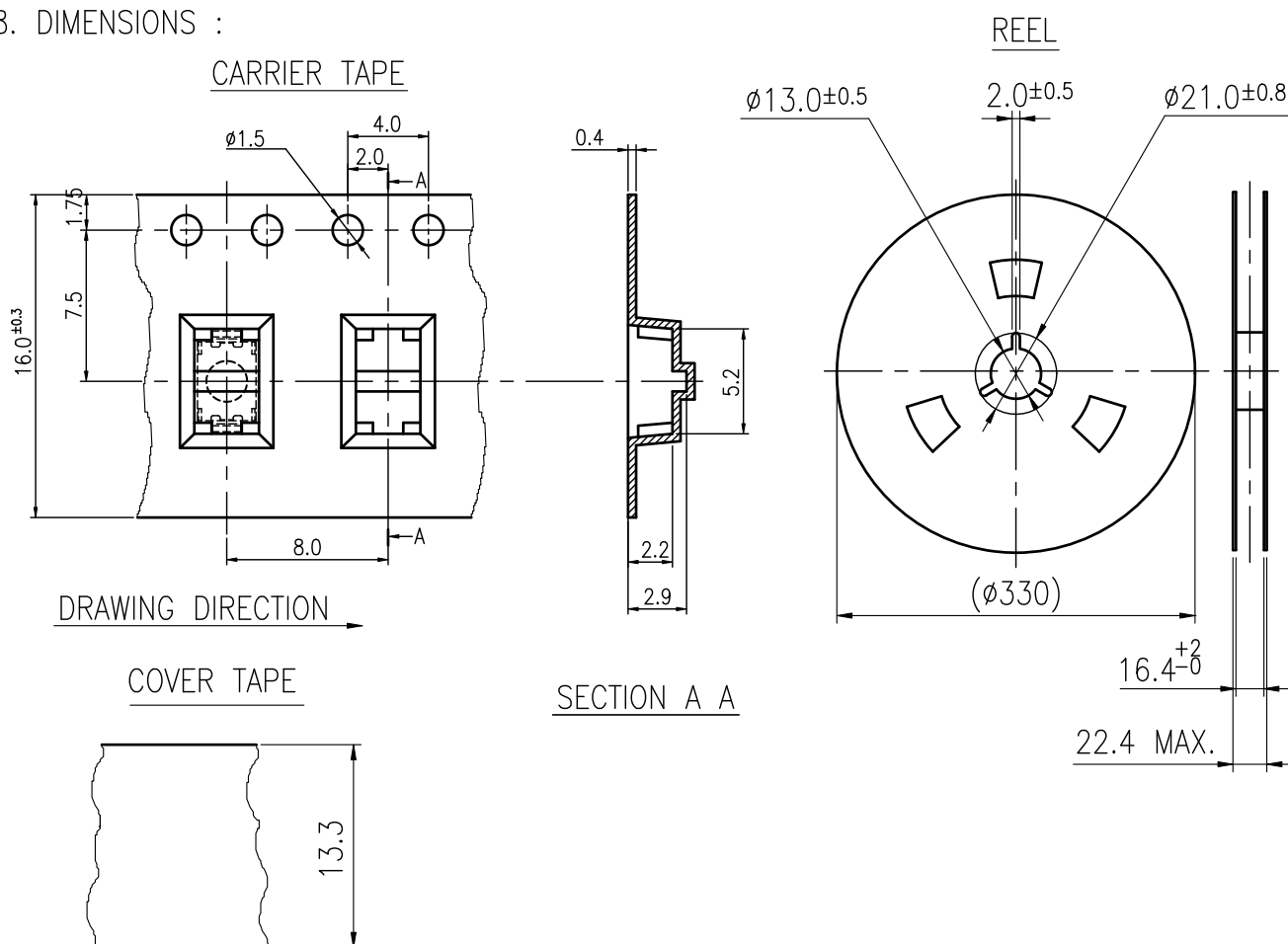
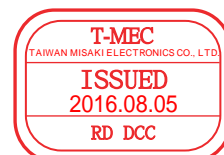
RoHS Compliant

1. STRUCTURE AND MATERIALS



③	COVER TAPE	POLYESTER
②	CARRIER TAPE	POLYSTYRENE
①	REEL	POLYSTYRENE
NO.	PARTS NAME	MATERIALS

- PACKAGING QUANTITY : **2,500** PCS/REEL
- MORE THAN 10 EMPTY POCKETS SHOULD BE REMAINED AT BOTH ENDS OF THE CARRIER TAPE FOR EACH REEL.
- SHORTAGE LESS THAN 10 PCS A REEL IS ACCETABLE BUT MORE THAN 3 RUNNING POCKETS SHORTAGE IS NOT ALLOWED.
- STRIPPING STRENGTH OF COVER TAPE IS BETWEEN 10 gf TO **130** gf AND STRIPPING ANGLE SHOULD BE WITHIN 165° ~ 180°.
- THE PRODUCT IN THE POCKET OF CARRIER TAPE SHOULD BE PLACED IN A SPECIFIED CORRECT POSITION.
- TAPE AND REEL PER EIA-481
- DIMENSIONS :



				APPROVED BY	REVIEWED BY	CHECKED BY	DESIGNED BY	MODEL NO.
							Jane Shen	NTC018-CC1J-A160T
							2009.02.02	PAGINATE.
								1/1
								SPEC NO.
								P-354
SYM	DISCRIPTION	DATE	APPROVED					

TAIWAN MISAKI ELECTRONICS CO.,LTD.