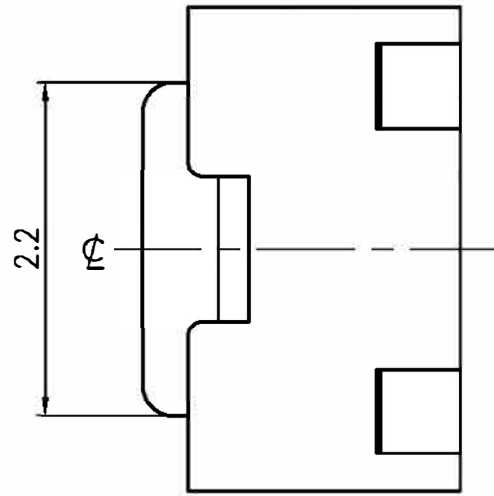
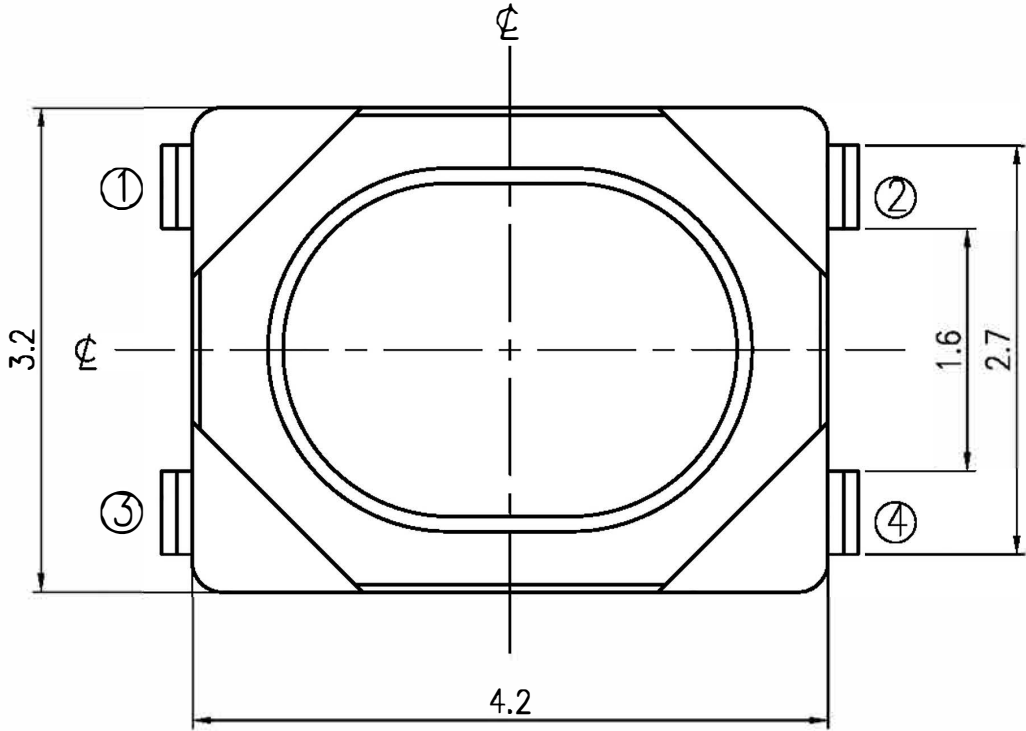
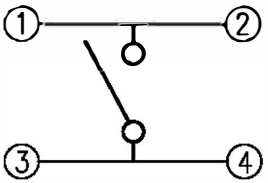


RoHS Compliant

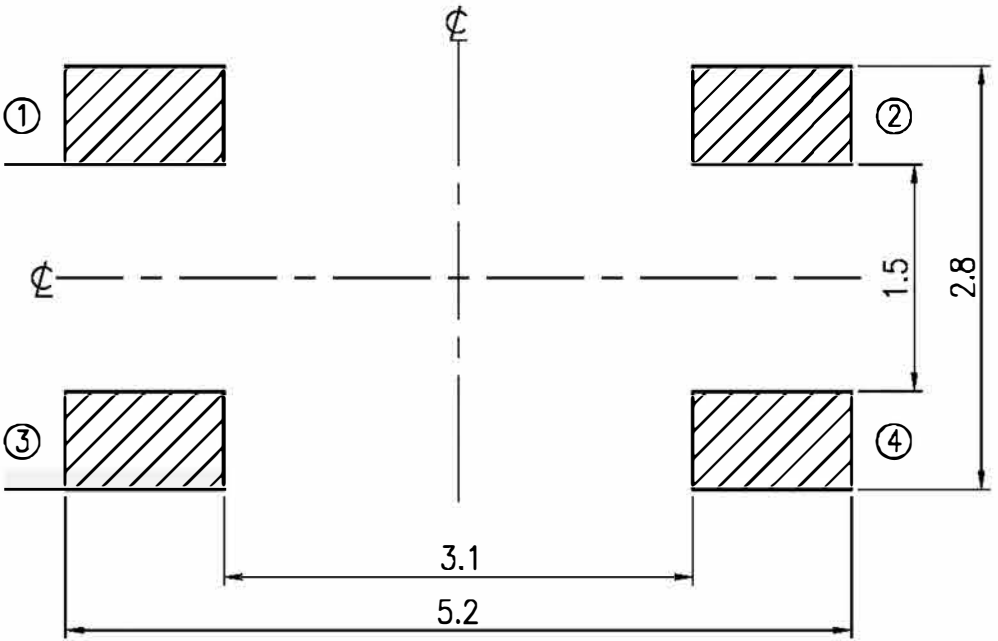
REVISIONS							
Rev	DESCRIPTION	DATE	DRAWER	Rev	DESCRIPTION	DATE	DRAWER
A	Initial Drawing	2016.11.03	Jane Shen	C			
B				D			
SPECIFICATIONS							
RATING		DC16V 50mA		TIMING			
CONTACT RESISTANCE		500mΩ MAX.		OPERATION (TORQUE)		500±100gf	
INSULATION RESISTANCE		DC500V - 100MΩ MIN.		STROKE (ANGLE)		0.2±0.1 mm	
WITHSTAND VOLTAGE		AC250V - 1 MINUTE.		CONTACT RESISTANCE		1Ω MAX.	
REMARKS:				(AFTER		200,000 CYCLES LIFE TEST)	



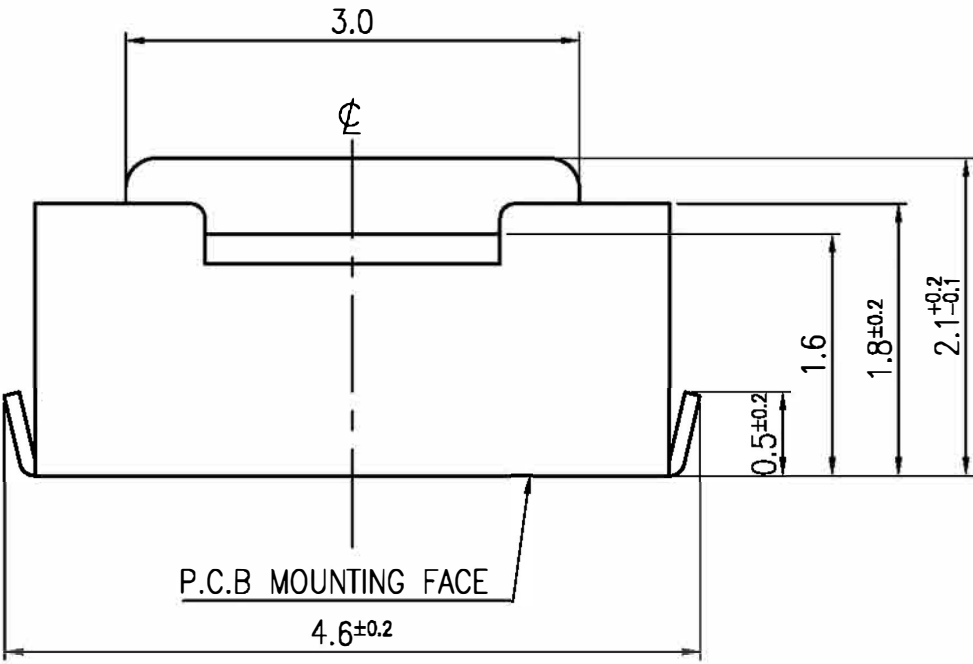
SCHEMATIC



RECOMMENDED P.C.B LAYOUT



HATCHED AREA SHOWS SOLDERING LAND



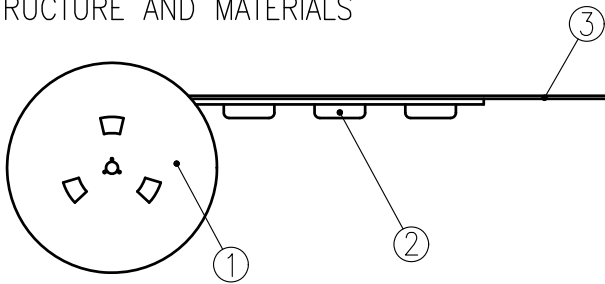
TOLERANCES UNLESS OTHERWISE SPECIFIED ±0.1			SIGNATURES		DATE	MODEL
			DRAWER	Jnae Shen	2016.11.03	TITLE TACT SWITCH
			CHECKED			
	UNIT mm	SCALE 20/1	REVIEWED			NO. ETC013-AP1J-B500T
			APPROVALS			

TAIWAN MISAKI ELECTRONICS CO., LTD.

THE PACKING SPECIFICATIONS

RoHS Compliant

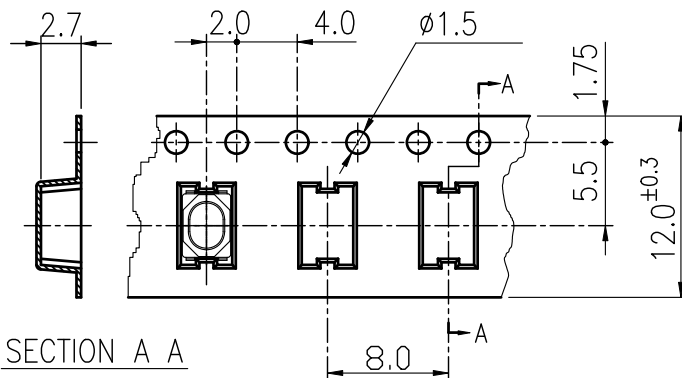
1.STRUCTURE AND MATERIALS



③	COVER TAPE	POLYESTER
②	CARRIER TAPE	POLYSTYRENE
①	REEL	POLYSTYRENE
NO.	PARTS NAME	MATERIALS

- PACKAGING QUANTITY : 2,900 PCS/REEL
- MORE THAN 10 EMPTY POCKETS SHOULD BE REMAINED AT BOTH ENDS OF THE CARRIER TAPE FOR EACH REEL.
- SHORTAGE LESS THAN 10 PCS A REEL IS ACCETABLE BUT MORE THAN 3 RUNNING POCKETS SHORTAGE IS NOT ALLOWED.
- STRIPPING STRENGTH OF COVER TAPE IS BETWEEN 10 gf TO 130 gf AND STRIPPING ANGLE SHOULD BE WITHIN 165° ~ 180°.
- THE PRODUCT IN THE POCKET OF CARRIER TAPE SHOULD BE PLACED IN A SPECIFIED CORRECT POSITION.
- TAPE AND REEL PER EIA-481.
- DIMENSIONS :

CARRIER TAPE

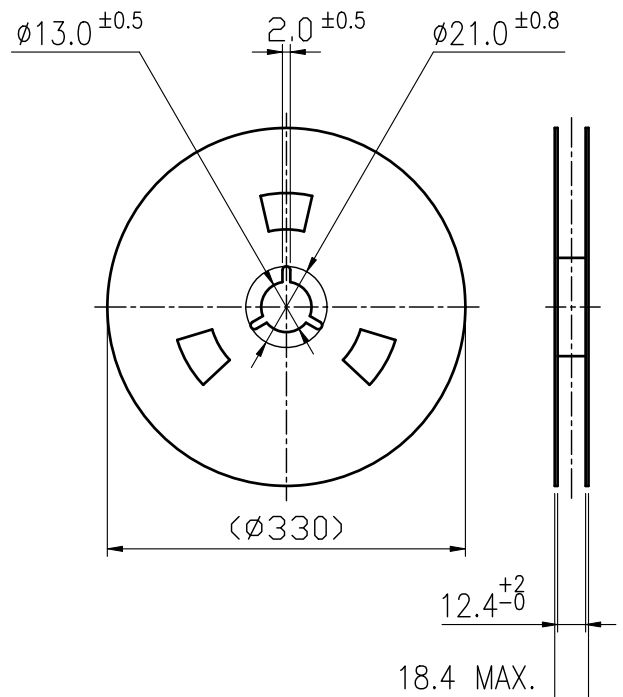


DRAWING DIRECTION

COVER TAPE



REEL



				APPROVED BY	REVIEWED BY	CHECKED BY	DESIGNED BY	MODEL NO.
							Jane Shen	NTC013-AP1J-B500TW
							2016.05.24	PAGINATE.
								1/1
								SPEC NO.
								P-433
SYM	DISCRPTION	DATE	APPROVED					

TAIWAN MISAKI ELECTRONICS CO.,LTD.