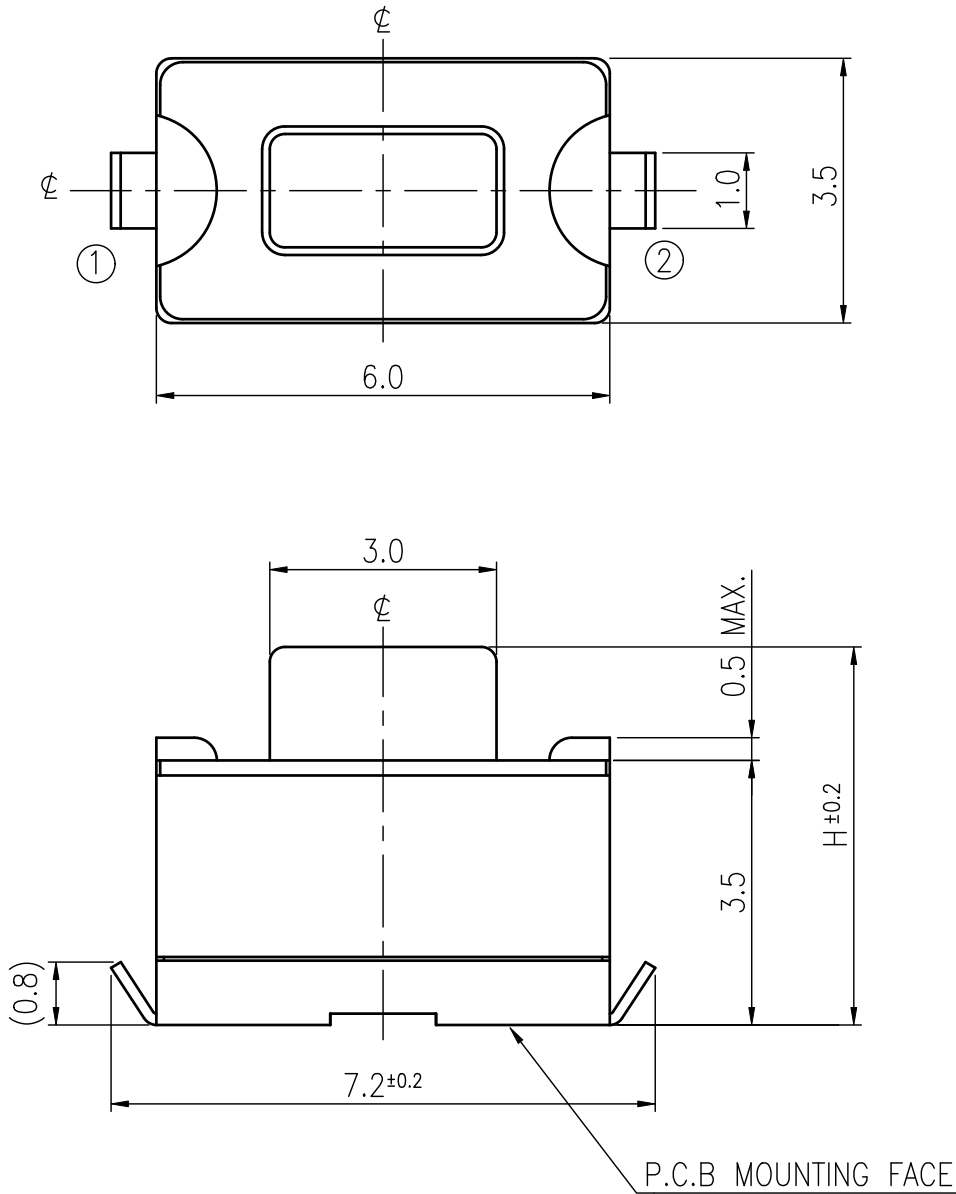
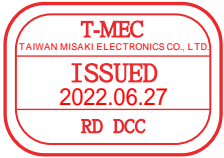


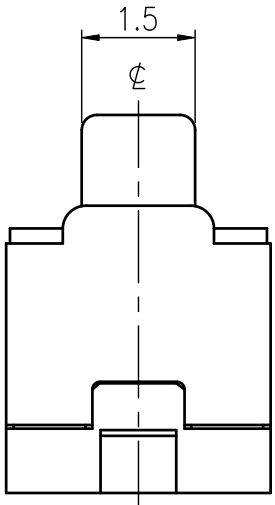
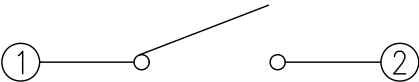
RoHS Compliant



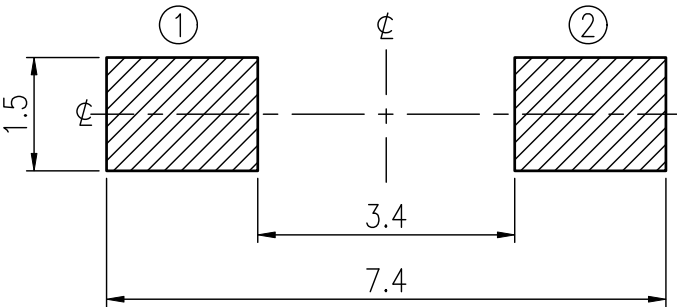
MODEL NO.	H	OPERATING FORCE	LIFE
ETC203-AT1J-A160T	4.3	160±50gf	50,000
ETC203-AT1J-B160T	5.0	160±50gf	50,000
ETC203-AT1J-A260T	4.3	260±70gf	30,000
ETC203-AT1J-B260T	5.0	260±70gf	30,000

REVISIONS							
Rev	DESCRIPTION	DATE	DRAWER	Rev	DESCRIPTION	DATE	DRAWER
A	Initial Drawing	2019.09.03	Jane Shen	C			
B				D			
SPECIFICATIONS							
RATING		DC12V 50mA		TIMING			
CONTACT RESISTANCE		100mΩ MAX.		OPERATION (TORQUE)			
INSULATION RESISTANCE		DC500V – 100MΩ MIN.		STROKE (ANGLE)		0.15±0.1 mm	
WITHSTAND VOLTAGE		AC250V – 1 MINUTE		LIFE		CYCLES	
REMARKS:		Waterproof Grade : IP67					

SCHEMATIC



P.C.B LAYOUT



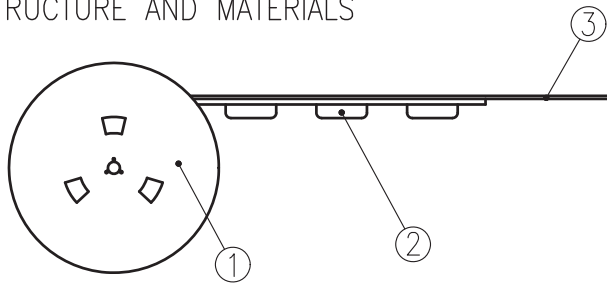
TOLERANCES UNLESS OTHERWISE SPECIFIED ±0.1			SIGNATURES		DATE	MODEL
			DRAWER	Jane Shen	2019.09.03	TACT SWITCH
			CHECKED	Landry Su	2019.09.03	
	UNIT mm	SCALE 10/1	REVIEWED			NO. See Model No.
			APPROVALS		Qiuyuan Chuang 2019.09.03	

TAIWAN MISAKI ELECTRONICS CO., LTD.

THE PACKING SPECIFICATIONS

RoHS Compliant

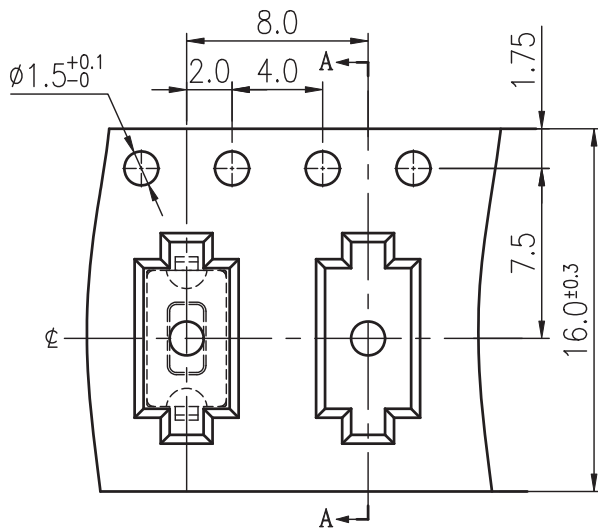
1.STRUCTURE AND MATERIALS



③	COVER TAPE	POLYESTER
②	CARRIER TAPE	POLYSTYRENE
①	REEL	POLYSTYRENE
NO.	PARTS NAME	MATERIALS

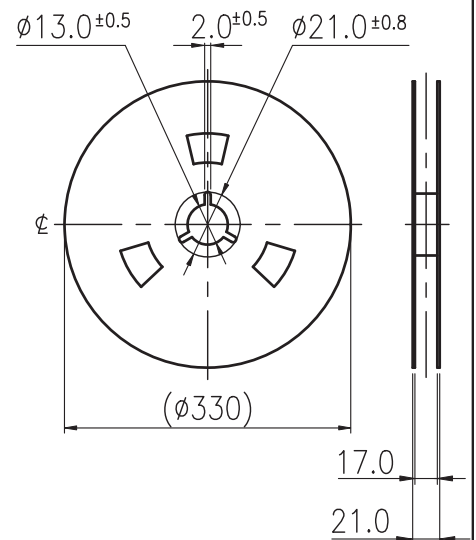
- PACKAGING QUANTITY : 1,800 PCS/REEL
- MORE THAN 10 EMPTY POCKETS SHOULD BE REMAINED AT BOTH ENDS OF THE CARRIER TAPE FOR EACH REEL.
- SHORTAGE LESS THAN 10 PCS A REEL IS ACCETABLE BUT MORE THAN 3 RUNNING POCKETS SHORTAGE IS NOT ALLOWED.
- STRIPPING STRENGTH OF COVER TAPE IS BETWEEN 10 gf TO 130 gf AND STRIPPING ANGLE SHOULD BE WITHIN 165° ~ 180 °.
- THE PRODUCT IN THE POCKET OF CARRIER TAPE SHOULD BE PLACED IN A SPECIFIED CORRECT POSITION.
- TAPE AND REEL PER EIA-481.
- DIMENSIONS :

CARRIER TAPE

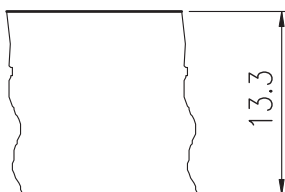


DRAWING DIRECTION

REEL



COVER TAPE



				APPROVED BY	REVIEWED BY	CHECKED BY	DESIGNED BY	MODEL NO.
							Jane Shen	NTC203-AT1J-A
								PAGINATE.
								1/1
								SPEC NO.
								P-113
SYM	DISCRIPTION	DATE	APPROVED					

TAIWAN MISAKI ELECTRONICS CO.,LTD.