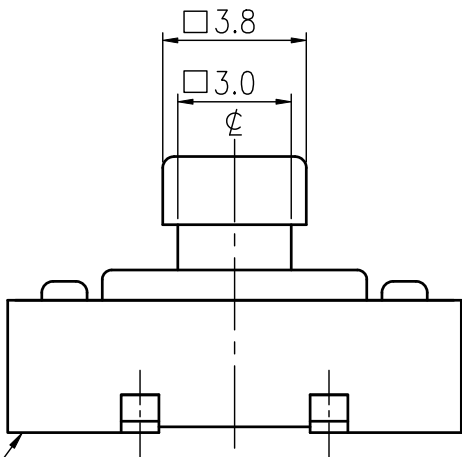
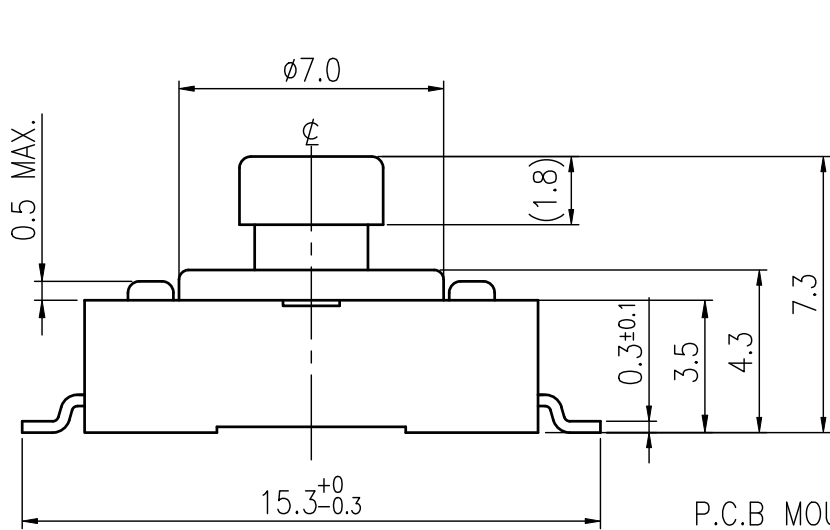
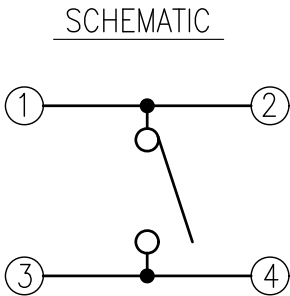
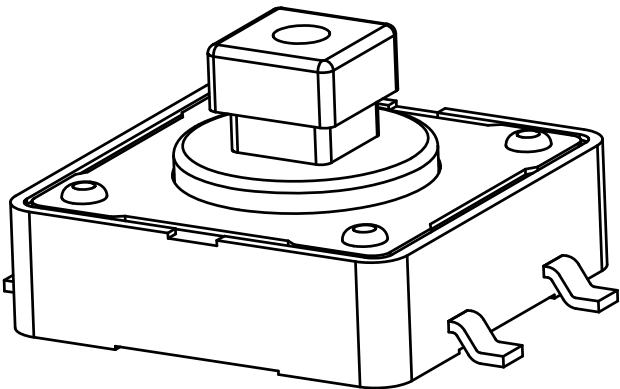
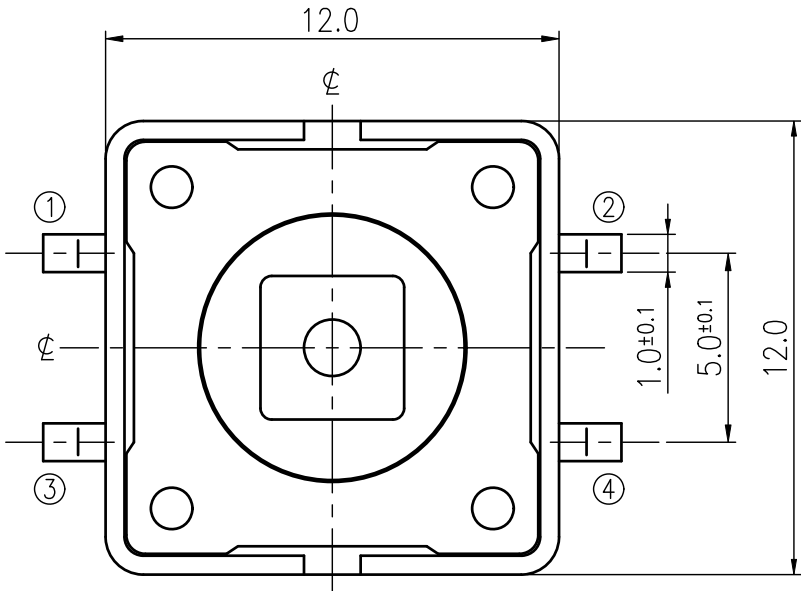


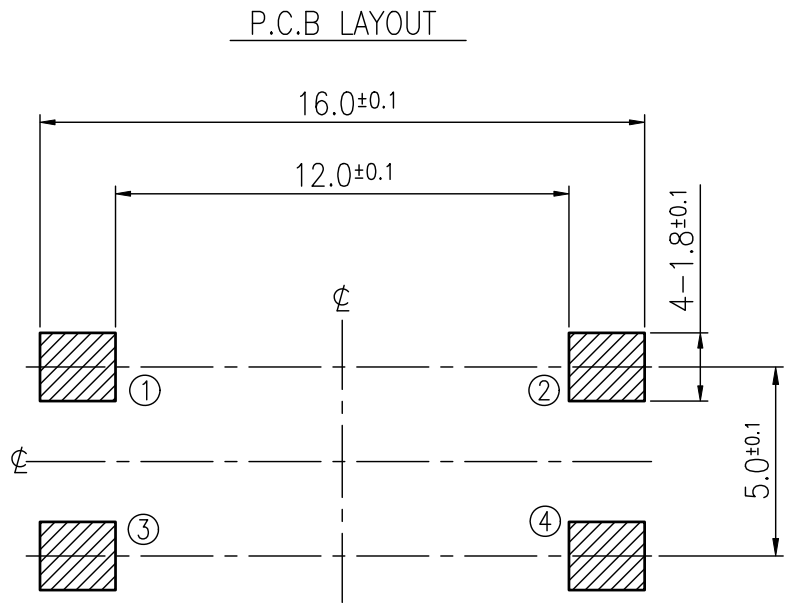
RoHS Compliant



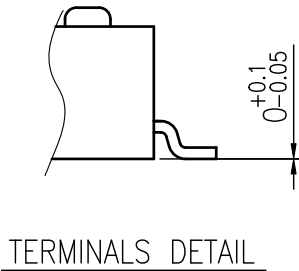
REVISIONS							
Rev	DESCRIPTION	DATE	DRAWER	Rev	DESCRIPTION	DATE	DRAWER
A	Initial Drawing	2016.05.16	Jane Shen	C			
B				D			
SPECIFICATIONS							
RATING		DC12V 50mA		TIMING			
CONTACT RESISTANCE		100mΩ MAX.		OPERATION (TORQUE)			
INSULATION RESISTANCE		DC500V – 100MΩ MIN.		STROKE (ANGLE)		0.3±0.1mm	
WITHSTAND VOLTAGE		AC250V – 1 MINUTE.		CONTACT RESISTANCE		2Ω MAX.	
REMARKS:				(AFTER		CYCLES LIFE TEST)	



P.C.B MOUNTING FACE



MODEL NO.	OPERATING FORCE	LIFE
ETC045-AD1G-A120T	120±50gf	1,000,000
ETC045-AD1G-A160T	160±50gf	500,000
ETC045-AD1G-A260T	260±70gf	300,000



TERMINALS DETAIL

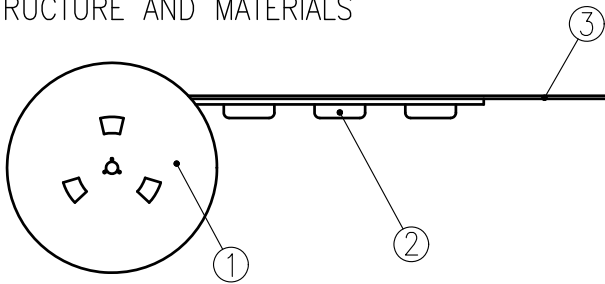
TOLERANCES UNLESS OTHERWISE SPECIFIED ±0.2			SIGNATURES	DATE	MODEL
			DRAWER Jane Shen	2016.05.16	TACT SWITCH
			CHECKED		
			REVIEWED		NO. SEE MODEL NO.
			APPROVALS Dennis Hung	2016.05.16	

TAIWAN MISAKI ELECTRONICS CO., LTD.

# THE PACKING SPECIFICATIONS

RoHS Compliant

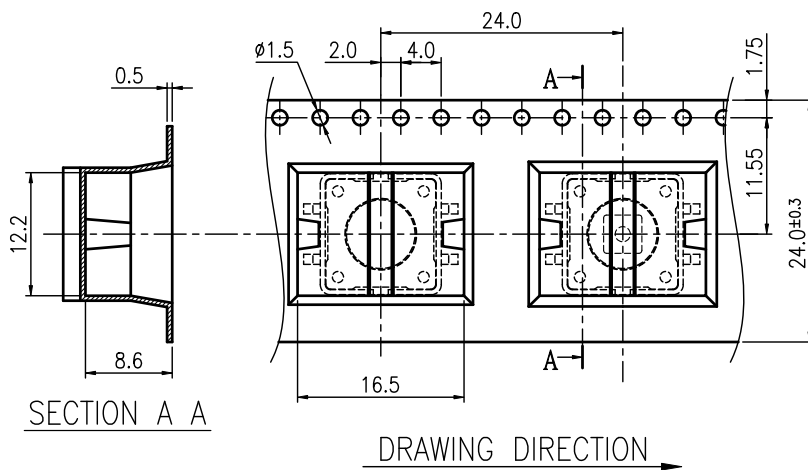
## 1.STRUCTURE AND MATERIALS



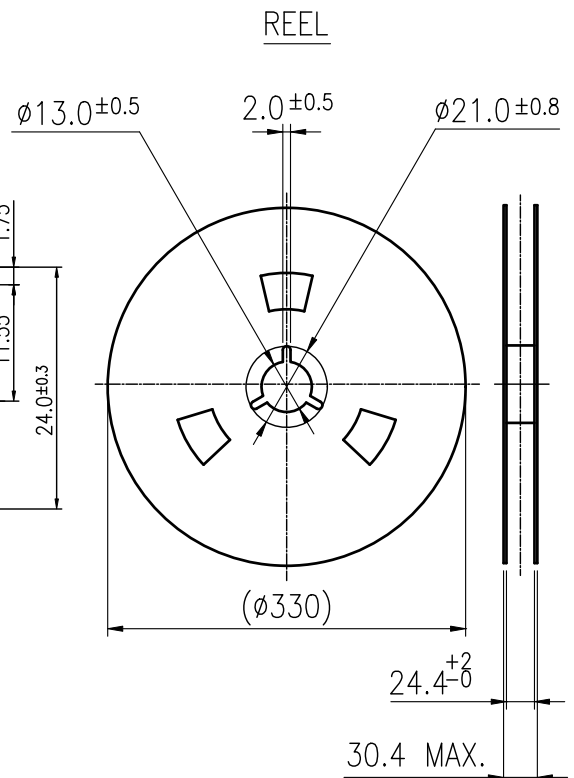
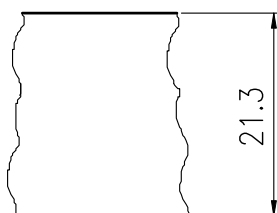
③	COVER TAPE	POLYESTER
②	CARRIER TAPE	POLYSTYRENE
①	REEL	POLYSTYRENE
NO.	PARTS NAME	MATERIALS

- PACKAGING QUANTITY : 250 PCS/REEL
- MORE THAN 10 EMPTY POCKETS SHOULD BE REMAINED AT BOTH ENDS OF THE CARRIER TAPE FOR EACH REEL.
- SHORTAGE LESS THAN 10 PCS A REEL IS ACCETABLE BUT MORE THAN 3 RUNNING POCKETS SHORTAGE IS NOT ALLOWED.
- STRIPPING STRENGTH OF COVER TAPE IS BETWEEN 10 gf TO 130 gf AND STRIPPING ANGLE SHOULD BE WITHIN 165° ~ 180° .
- THE PRODUCT IN THE POCKET OF CARRIER TAPE SHOULD BE PLACED IN A SPECIFIED CORRECT POSITION.
- TAPE AND REEL PER EIA-481.
- DIMENSIONS :

### CARRIER TAPE



### COVER TAPE



				APPROVED BY	REVIEWED BY	CHECKED BY	DESIGNED BY	MODEL NO.
							Jane Shen	NTC045-AD1G-A260T
							2016.05.16	PAGINATE.
								1/1
								SPEC NO.
								P-767
SYM	DISCRPTION	DATE	APPROVED					

TAIWAN MISAKI ELECTRONICS CO.,LTD.