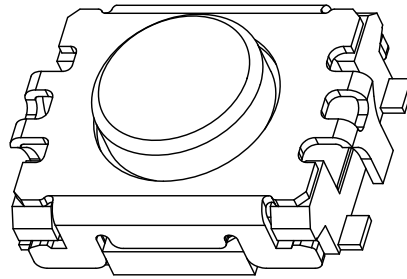
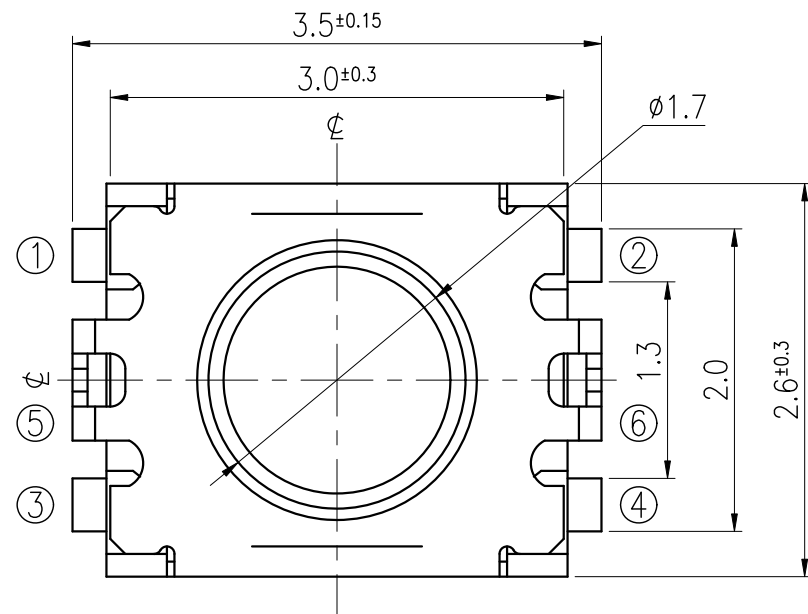
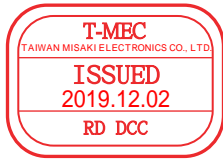
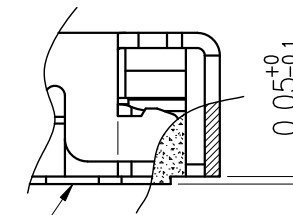


## RoHS Compliant

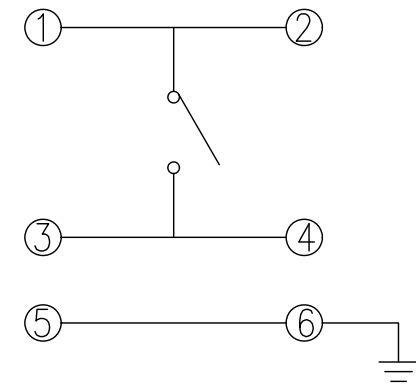


△ (terminal and ESD pins  
coplanarity of 0.1mm max)

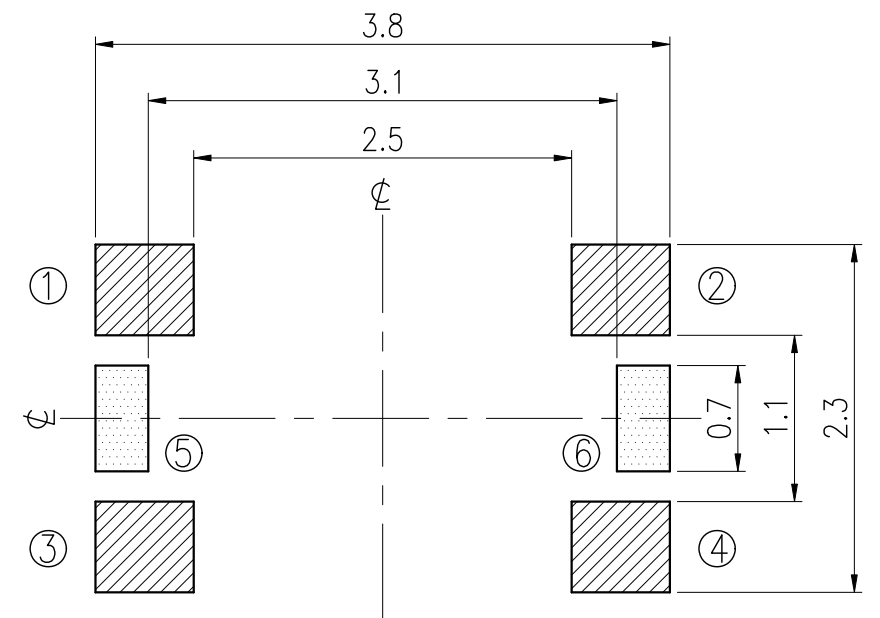


P.C.B MOUNTING FACE

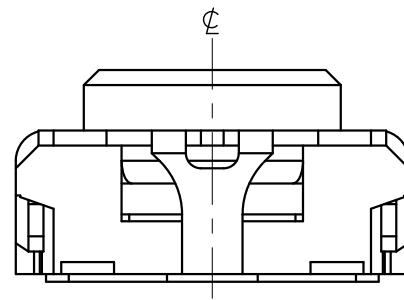
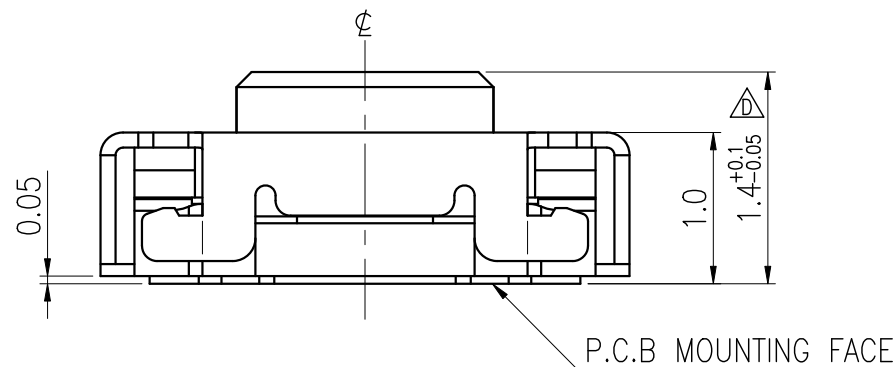
## TERMINALS DETAIL



## P.C.B LAYOUT



 GROUND TERMINAL CAN BE EFFECTIVE EVEN IF NOT SOLDERED.



MODEL NO.	OPERATING FORCE	LIFE
ETC021-BA1G-A160TX	160±50gf	500,000
ETC021-BA1G-A240T	240±70gf	200,000
ETC021-BA1G-A340T	340±70gf	200,000
ETC021-BA1G-A450T	450±80gf	200,000

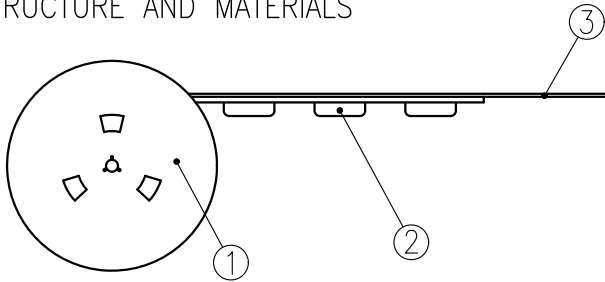
TOLERANCES UNLESS OTHERWISE SPECIFIED ±0.1			SIGNATURES		DATE		MODEL	
			DRAWER Landry Su		2019.11.29		TITLE TACT SWITCH	
			CHECKED					
	UNIT mm	SCALE 20/1	REVIEWED				NO. SEE MODEL NO.	
			APPROVALS <u>Qiuyuan Chuang</u>		2019.11.29			

TAIWAN MISAKI ELECTRONICS CO., LTD.

# THE PACKING SPECIFICATIONS

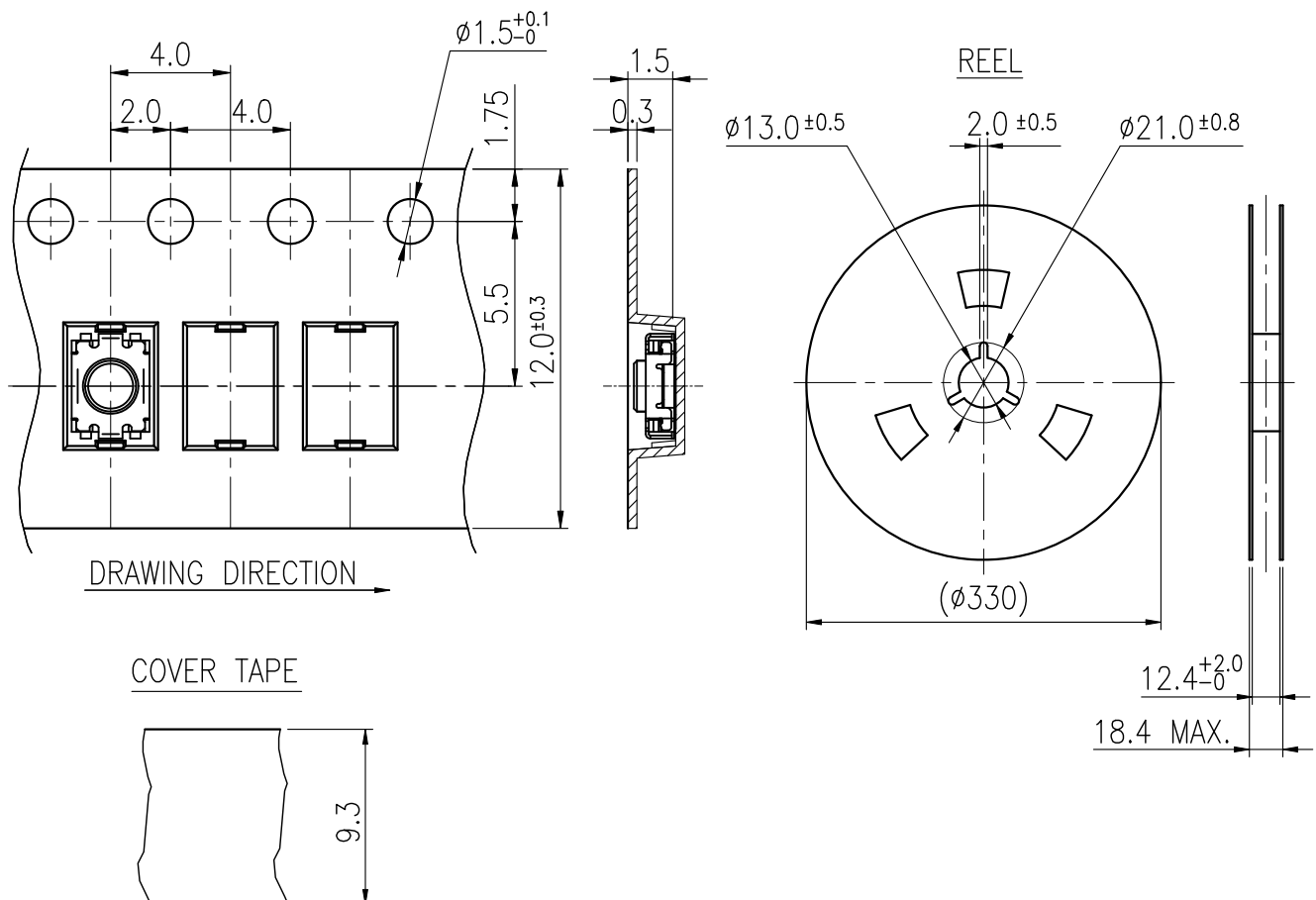
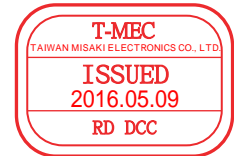
RoHS Compliant

## 1. STRUCTURE AND MATERIALS



③	COVER TAPE	POLYESTER
②	CARRIER TAPE	POLYSTYRENE
①	REEL	POLYSTYRENE
NO.	PARTS NAME	MATERIALS

- PACKAGING QUANTITY : 9,500 PCS/REEL
- MORE THAN 10 EMPTY POCKETS SHOULD BE REMAINED AT BOTH ENDS OF THE CARRIER TAPE FOR EACH REEL.
- SHORTAGE LESS THAN 10 PCS A REEL IS ACCEPTABLE BUT MORE THAN 3 RUNNING POCKETS SHORTAGE IS NOT ALLOWED.
- STRIPPING STRENGTH OF COVER TAPE IS BETWEEN 10 gf TO **130** gf AND STRIPPING ANGLE SHOULD BE WITHIN 165° ~ 180°.
- THE PRODUCT IN THE POCKET OF CARRIER TAPE SHOULD BE PLACED IN A SPECIFIED CORRECT POSITION.
- TAPE AND REEL PER EIA-481.
- DIMENSIONS :



				APPROVED BY	REVIEWED BY	CHECKED BY	DESIGNED BY	MODEL NO.
							Catherine Lee	NTC021-BA1G-A 160 TX
							2014.01.07	PAGINATE.
								1/1
								SPEC NO.
								P-748
SYM	DISCRIPTION	DATE	APPROVED					

TAIWAN MISAKI ELECTRONICS CO.,LTD.